



## Final west side boundary and program changes

Learn more, follow the process: [www.pps.net](http://www.pps.net), "Growing Great Schools"

The Portland School Board approved a final plan on April 19 to relieve overcrowding at several west side schools.

Families who have questions or need to discuss transferring to a different school, should contact the **PPS Enrollment & Transfer Center**, 503-916-3205 or [enrollment-office@pps.net](mailto:enrollment-office@pps.net). Petition forms for initiating a transfer, and other information, can be found at [www.pps.net/Page/868](http://www.pps.net/Page/868).

---

### When do boundaries change?

---

Elementary school assignment changes begin in August 2016 with incoming kindergarteners. New middle and high school assignments begin in 2017.

---

### Guidance for kindergarten families

---

Incoming kindergarteners whose assigned school has now changed are expected to attend the new school, unless they have already secured a transfer to a different school. If a kindergartener registered, for example, at Capitol Hill but now is to attend Stephenson, Capitol Hill will forward that registration to Stephenson. The family does not need to re-register. Families who have not registered yet should do so at the newly assigned school.

Families should contact Enrollment & Transfer to receive an approved transfer if:

- They have an incoming kindergartner as well as a child attending the former neighborhood school, and they want both students to attend the same school, or,
- They wish to enroll a child at the new neighborhood school who is on transfer elsewhere.

---

### Chapman attendance area changes

---

To relieve overcrowding at Chapman, kindergarten students attend school on the PPS Ramona campus, 1545 NW 13th St. Kindergarten families will receive additional information from Chapman in preparation for the new school year.

In addition, the following boundary changes take effect this fall for incoming kindergarten families:

- The area located north of West Burnside Road and west of Hilltop Drive to Forest Park Elementary School.
- The area located south of West Burnside Road and west of Skyline Boulevard to Bridlemile Elementary School.
- The area located south of West Burnside Road and west of Washington Park and the area located south of SW Market Street to Ainsworth Elementary School.

Chapman students continue to attend West Sylvan Middle School and Lincoln High School.

---

### Lincoln High School attendance area changes

---

The following boundary changes will be made between Lincoln and Wilson high schools, beginning in Fall 2017 with incoming 9th grade students.

- Most of Bridlemile Elementary will be assigned to Robert Gray Middle School and Wilson High School.
- Due to proximity and transportation considerations, students in the areas west of Scholls Ferry Road and north of Hewett Road will continue to be assigned to West Sylvan Middle School and Lincoln High School. They will receive district provided transportation where warranted. This area includes the portions of the Bridlemile boundary that are:
  - West of Scholls Ferry Road and north of Scholls Ferry Court (West Slope)
  - North of Highway 26 (Sylvan Highlands)
  - The area bound on the north by Hwy 26 and on the west and south by the south side of SW Hewett Blvd, adjacent dead-end streets (SW 50th Ave, SW 54th Ave, extension of SW Hewett Blvd).

Students from these areas would have a transfer guarantee to attend Wilson, as well, and should call the Enrollment & Transfer Center if they wish to transfer to Wilson.

---

### **Additional Bridlemile-related adjustments**

---

- Current West Sylvan 6th, 7th and 8th graders from the Bridlemile catchment area who live in the portion of the boundary that is shifting to Wilson retain the right to transfer into Lincoln by contacting Enrollment & Transfer. This transfer guarantee will not apply to younger siblings.
- Current Bridlemile 5th graders will feed to West Sylvan in Fall 2016 but have a guaranteed right to transfer to Robert Gray by contacting Enrollment & Transfer. High school assignment for this class will be Wilson.
- Current Bridlemile 4th graders and beyond are assigned to either Gray Middle School/Wilson High School or West Sylvan Middle School/Lincoln High School depending on their home address.

---

### **Capitol Hill attendance area changes**

---

- The area south of SW Maplecrest Court/SW Terwilliger Boulevard and east of SW 25th Avenue moves to Stephenson.

---

### **Maplewood attendance area changes**

---

- Current 5th graders are assigned to Gray Middle School. Students who wish to go to Jackson instead, should contact Enrollment & Transfer.
- Current 4th graders and beyond are assigned to Jackson Middle School.

---

### **Hayhurst attendance area changes**

---

- The Odyssey K-8 focus option program will move in August 2016 to East Sylvan School, which is currently empty. Families will receive more information in preparation for the new school year.
- The following boundary changes impact incoming kindergarteners starting this fall to maintain strong enrollment at Hayhurst:
  - The area south of Beaverton-Hillsdale Highway and west of SW 58th Avenue is assigned to Hayhurst from Bridlemile. The same area will be assigned from West Sylvan Middle School/Lincoln High School to Gray Middle School/ Wilson High School.
  - The area south and west of SW Dosch Road is assigned to Hayhurst from Rieke.
  - The area east of SW 35th Avenue and south of SW North Carolina Street and the area east of SW 31st Avenue and south of SW Nevada Court are assigned to Hayhurst from Maplewood. Current Maplewood students who live in these areas would be guaranteed transfer to Jackson Middle School by contacting Enrollment & Transfer.
  - All Maplewood students now have the option to request transfer to Hayhurst by contacting Enrollment & Transfer.

---

### **Maplewood attendance area changes**

---

- Maplewood students are assigned to Jackson Middle School beginning in Fall 2017. Current Maplewood 5th graders who wish to transfer to Jackson in 2016 may do so by contacting Enrollment & Transfer.
- The area located south of SW Caldwel Street and east of SW 25th Avenue moves to Rieke.

---

### **Possible future changes**

---

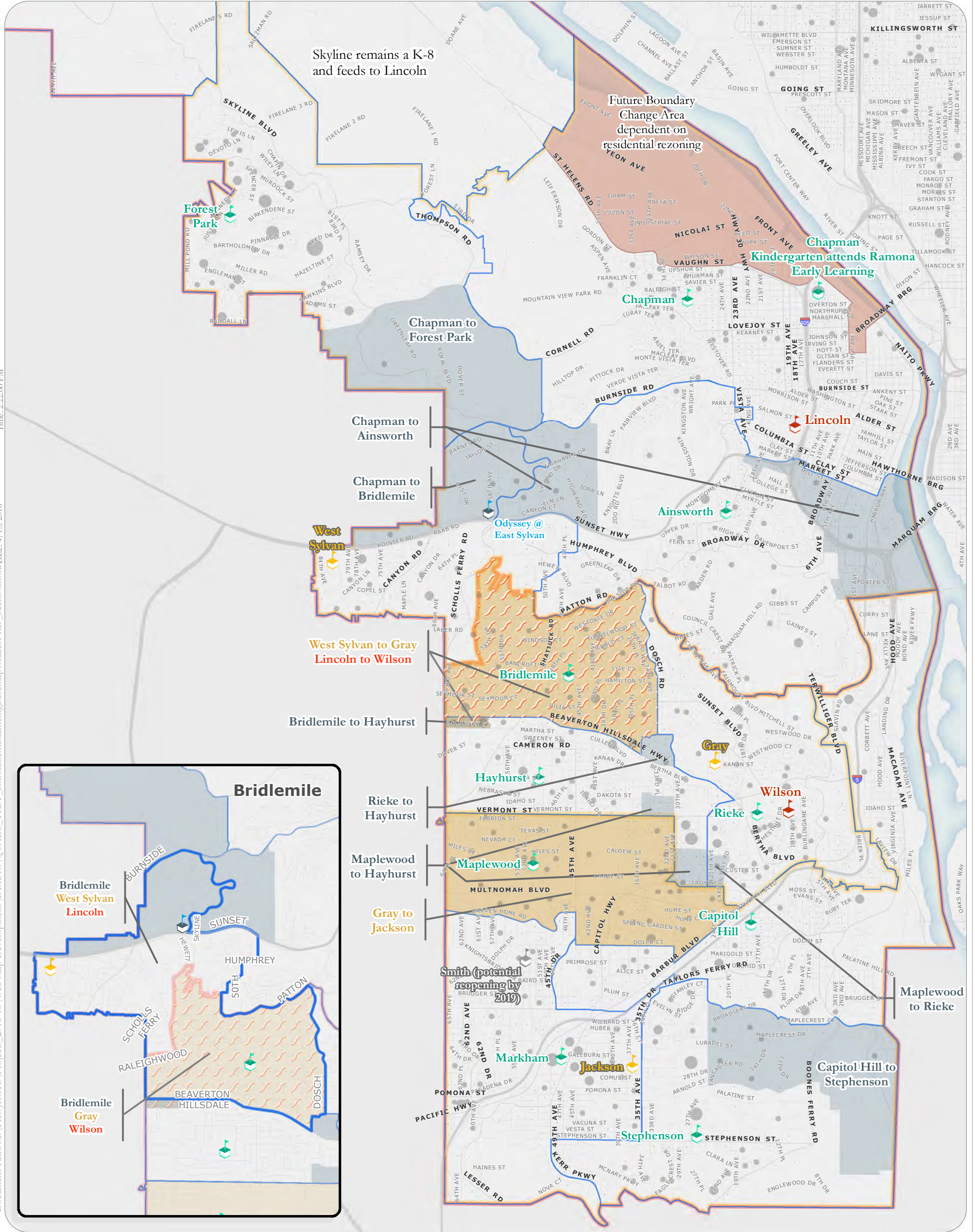
Options for ensuring space for growing enrollment in the Lincoln and Wilson clusters:

- Prepare to reopen Smith School as a K-5 with a projected launch of Fall 2019.
- Consider a new K-5 or middle school as part of the master plan for modernizing Lincoln High School.
- Work with the City of Portland to locate a K-5 or middle school as part of redeveloping the U.S. Post Office at NW Broadway & Hoyt.
- Consider changes to Metropolitan Learning Center, as part of the education options review process, including shifting from a K-12 to a K-8 focus option that prioritizes access for neighborhood children and moving MLC's K-12 program to a new site (possibly as part of the Post Office redevelopment) and repurposing the Couch Elementary building now occupied by MLC.



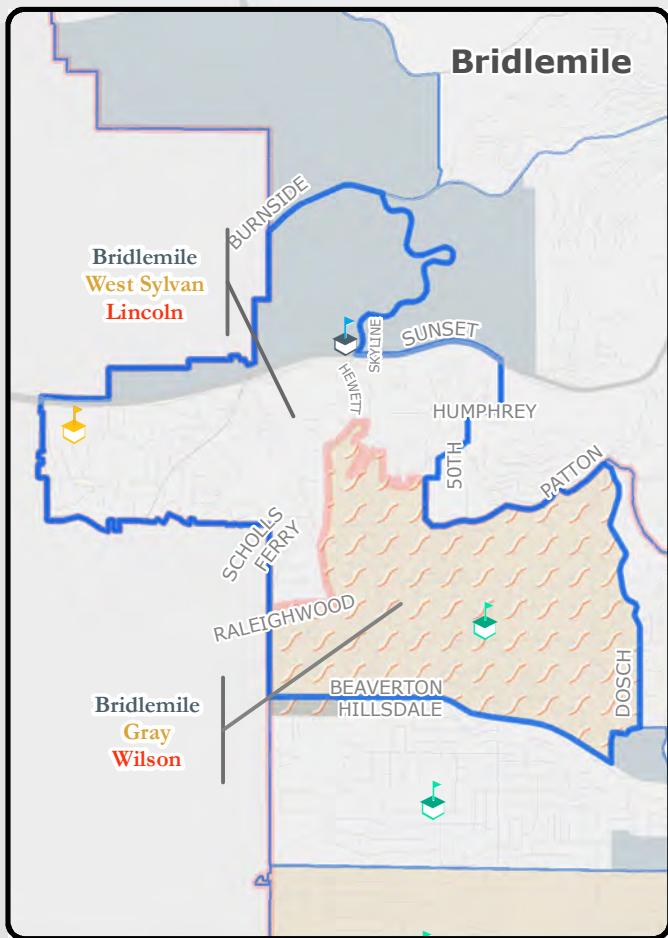
# Attendance Area Changes for Lincoln and Wilson Cluster Schools

Board Resolution No. 5256



Time: 2:22:00 PM

Document Path: M:\PROJECTS\Projects\_2011-5-16\Web Map Development\DBRAC\QUADS\_TEST\_EnrollmentBalancingBaseMap\Grades\PRD\_Scen3C.mxd Date: 4/15/2016

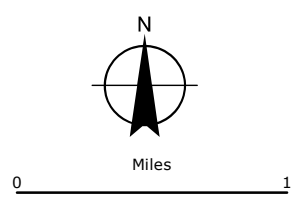


## Legend

- School Types Shown by Grade**
- High
  - Middle
  - K-8
  - K-5
  - Not in use
  - Focus Option

- K-8 Population by Blocks**
- 1 - 6
  - 7 - 20
  - 21 - 50
  - 51 - 80
  - 81 - 120
  - 121 - 200

- Proposed HS boundary
- Proposed 6 - 8 boundary
- Proposed K-5 boundary
- Proposed changes from current HS boundary
- Proposed changes from current 6 - 8 boundary
- Proposed changes from current K-5 boundary
- Proposed changes from current K-5 and 6 - 8 boundaries



Uses for PPS buildings not shown on this map are unchanged by this scenario.

