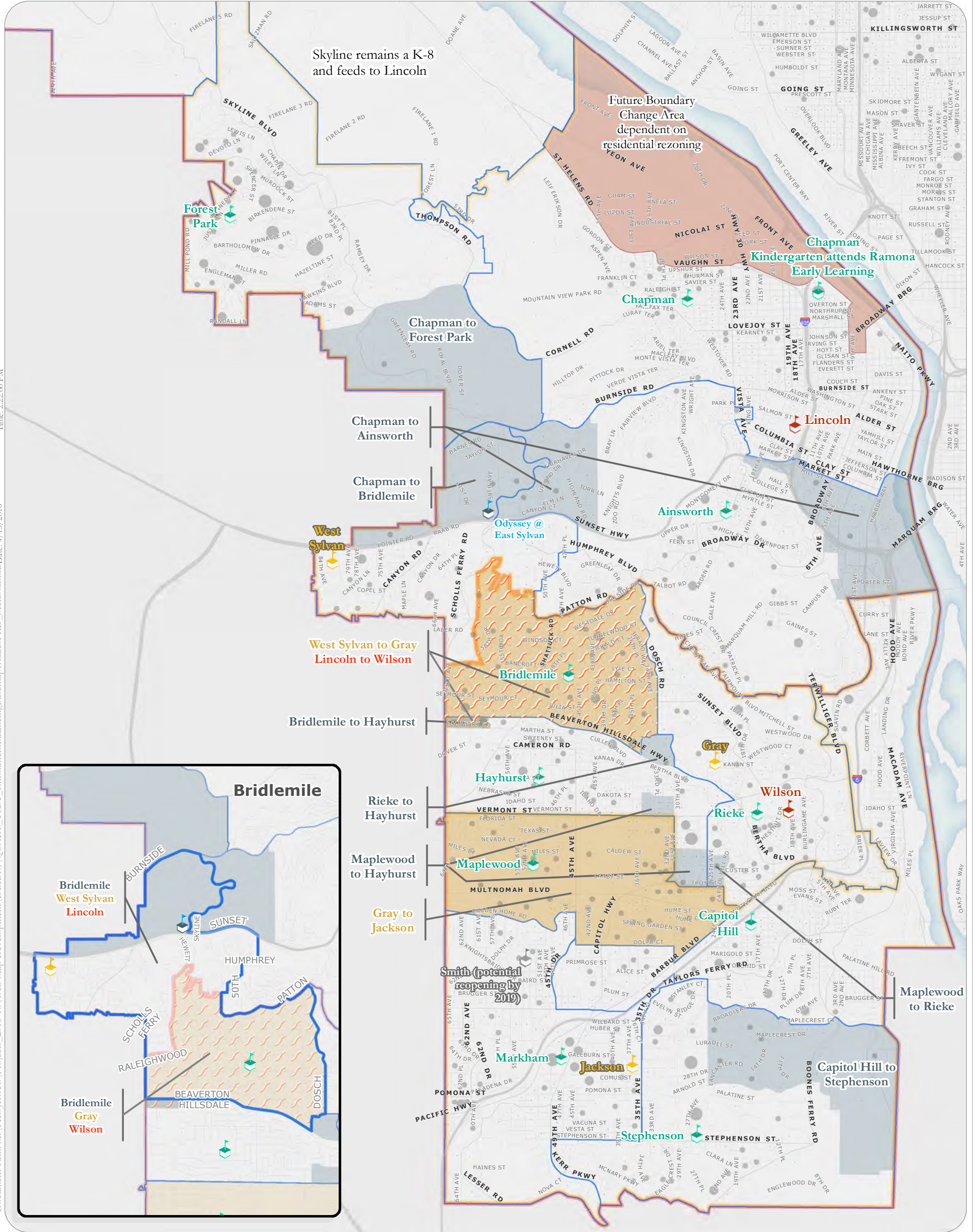
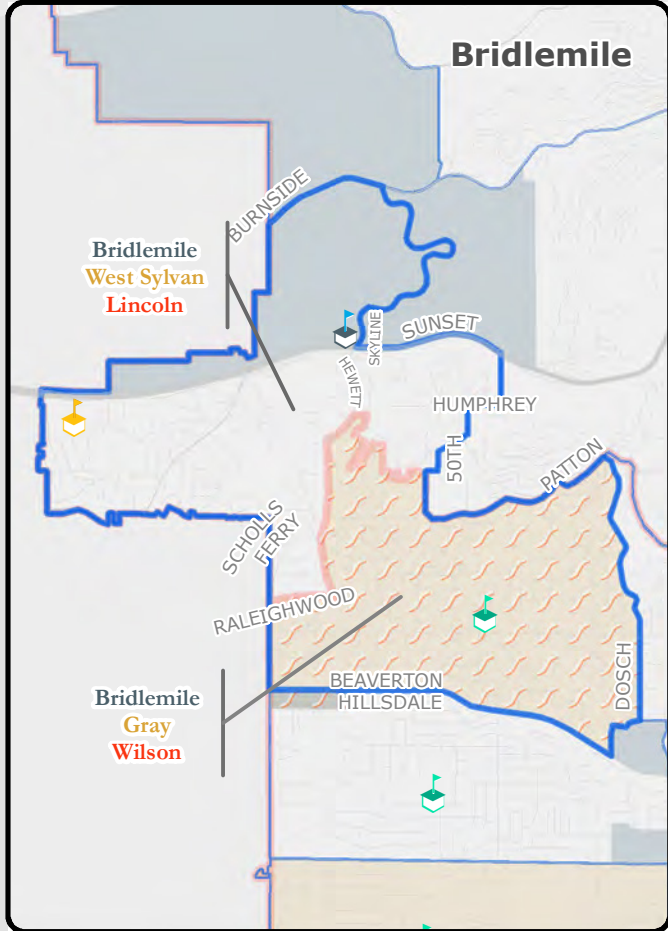


Attendance Area Changes for Lincoln and Wilson Cluster Schools

Board Resolution No. 5256



Document Path: M:\PROJECTS\Projects_2011-16\Web Map Development\DBRAC\QUADS_TEST_EnrollmentBalancingBaseMap\PRD_Scen3C.mxd Date: 4/15/2016 Time: 2:22:00 PM

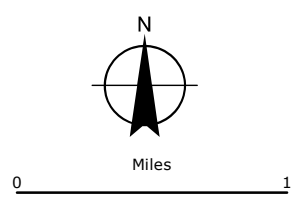


Legend

- School Types Shown by Grade**
- High
 - Middle
 - K-8
 - K-5
 - Not in use
 - Focus Option

- K-8 Population by Blocks**
- 1 - 6
 - 7 - 20
 - 21 - 50
 - 51 - 80
 - 81 - 120
 - 121 - 200

- Proposed HS boundary
- Proposed 6 - 8 boundary
- Proposed K-5 boundary
- Proposed changes from current HS boundary
- Proposed changes from current 6 - 8 boundary
- Proposed changes from current K-5 boundary
- Proposed changes from current K-5 and 6 - 8 boundaries



Uses for PPS buildings not shown on this map are unchanged by this scenario.

