

What is Restorative Justice in Schools?

A philosophy that creates a school climate in which all youth and adults are welcomed and held accountable

A language that does not assign blame, assume or accuse

An opportunity for youth to learn skills, to recognize the impact of their actions, and to be held accountable

Not an easy way out. It is more difficult to face the impact of our actions and to be held accountable, than be removed from those we harmed



Restorative
Justice
in Schools

**YOU
HAVE
A VOICE**

An Alternative to School Pushout

resolutions
NORTHWEST

ACCOUNTABILITY

NOT

EXCLUSION

School push-out is real.

You are not alone.

Pushout is when a student is excluded or leaves before graduation because schools have left the student and their family feeling unsafe, unwelcome or forced out. Youth of color, LGTBQ youth, those with disabilities, and families in poverty suffer most from pushout. They often experience harsher discipline for behaviors that are largely subjective and dependent on an adult's cultural interpretation. Restorative justice offers an alternative to exclusion while still holding students accountable.

Grant High School is building restorative justice in your school. Learn more & get involved.

Contact Us: Marty Williams- 503-916-5160

Maria Scanelli- maria@resolutionsnorthwest.org

WWW.RESOLUTIONSNORTHWEST.ORG

1827 NE 44th Ave., Suite 300

Portland, Oregon 97213

Resolutions
NORTHWEST

Instead of punishing students when problems arise,

RESTORATIVE JUSTICE

establishes accountability, repairs harm, and provides space for
learning and growth.

Natalie is late to school

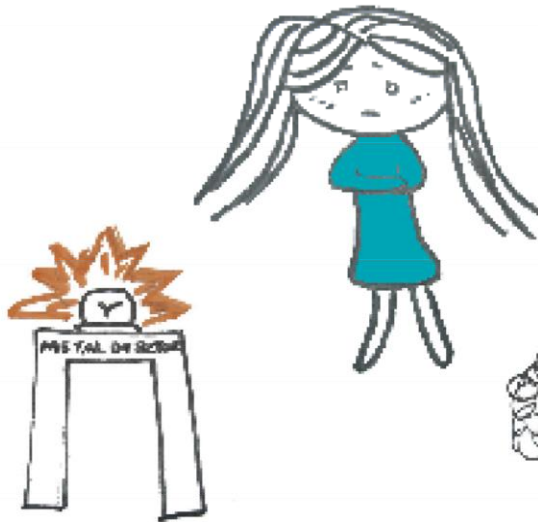
TRADITIONAL SCHOOL

Natalie is greeted by metal detectors and a scolding secretary who hands her a "tardy" slip.

Because she is late the teacher yells at her in front of her class.

Natalie talks back and is sent to in-school detention.

Detention is boring and she feels like she will never catch up with the rest of her class. Natalie stops going to school.



RESTORATIVE JUSTICE SCHOOL

The secretary welcomes her and says, "Hi Natalie, glad to see you!"

She walks into class late and the teacher whispers, "Hi Natalie, lets talk later!"

The teacher arranges a restorative circle with Natalie, her mother, and other support people.



In the circle the teacher discovers that Natalie is responsible for dropping off her little sister at day care and has a hard time catching the bus. They come up with a plan to help her catch the bus and work with the teacher to make-up for the time she missed.

RESTORATIVE PRACTICES

Support us in taking responsibility for our actions and their impact.

Individual Commitments

Holding ourselves accountable to build and maintain strong relationships, even when it gets hard

Dialogue:

Bringing those directly impacted and those responsible together to repair harm

Community Service:

Creating avenues for people to make things right, with dignity, by giving back to the community

Talking Circles:

An opportunity to get to know one another and build strong relationships

Restorative Inquiry:

one-on-one conversations to understand impact and take responsibility