



# Bridlemile Friday Flyer

February 2, 2024

This is the place for all current news from Bridlemile school. Please make sure to read your Friday Flyer every week!

## Important Dates to Remember:

2/19: Calendar update! School day for students

2/21: Health Exclusion Day (see more info below)

2/26 - 3/1: Missoula Children's Theatre at Bridlemile

3/6: 2024-25 Kinder Connect for incoming Kindergarteners! 8:15 AM in the Bridlemile Cafeteria

---



---

## 2nd Quarter Report Cards

Check student backpacks next week: report cards and progress notes will be coming home, Wednesday, Feb 7th.

---

## English Language Arts Curriculum—Ask your Beagle about:

*Kindergarten:* Students are discussing components of what makes a good story. Students picked one animal from their books and wrote one sentence about a fact about that animal, using illustration to support their sentence.

*First Grade:* Students are writing an informative paragraph addressing, “How did Jane Goodall make discoveries about animals.”

*Second Grade:* Students are discussing how people can respond to injustice. Students are writing an informative piece using evidence from books and video examining the 1964 Civil Rights Act.

*Third Grade:* Students are studying and learning about space through literature. Students are using information from text and analyzing language to describe cause and effect.

*Fourth Grade:* Students are writing a narrative using texts, “All Summer in a Day”, “Dust of Snow”, and “Stopping by Woods on a Snowy Evening”. Ask your Beagle about an “Exploded Moment” writing technique.

*Fifth Grade:* Students are examining how and why writers play with words. Students are writing a narrative character snapshot using sensory details and vivid verbs. Ask your Beagle about wordplay. Also ask your Beagle about their upcoming Poetry Slam!

---

## Thank you for Donating to the Food Drive!

Thanks to everyone’s contributions to the Food Drive! We donated 400 lbs of food to our local non-profit organization, Neighborhood House Food Pantry.

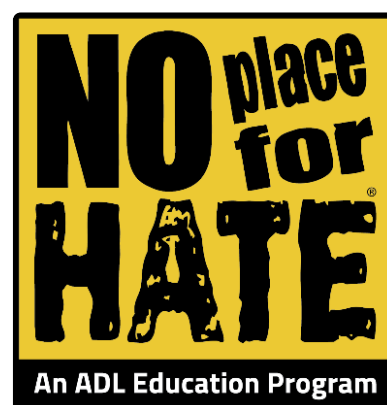


---

## No Place For Hate

In Bridlemile’s continuing work with ADL’s No Place for Hate program, we invite parents and caregivers to an evening session on how we can support conversations at home to challenge bias and bullying.

Come learn more about No Place for Hate and our work together to create positive change. Tuesday, February 27th, 5:00pm-6:00pm, Bridlemile School Library.



---

## From the Health Office

PPS is required to ensure that all students are up to date on all [school-required immunizations](#), or have a [signed medical exemption](#) letter signed by a licensed physician or a [non-medical exemption, by Wednesday, February 21, 2024 \("Exclusion Day"\)](#). Immunizations are required by state law for children and students in attendance at public and private schools, preschools, childcare facilities and Head Start programs in Oregon.

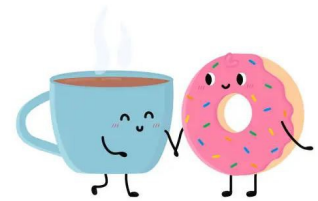
Students who do not have all their school-required vaccines or a qualifying exemption by Exclusion Day will not be allowed to attend school until their immunizations are up-to-date.

Thank you for keeping your student and their classmates safe, in school, and ready to learn!

---

## Thank you!

Thank you to Ms. Miner and Ms. Rischiotto's families for the First Friday Breakfast treats! Our staff feel the love and look forward to this monthly celebration. We know how much work goes into putting this together, and staff feel appreciated and recognized every month! Thank YOU! Thank YOU!



---

## Missoula Children's Theatre Week at Bridlemile!

Mark your calendars to audition for Missoula Children's Theatre production of The Princess and the Pea! Auditions are open to K-5. Students wishing to audition must complete this permission slip form by **Wednesday, February 21st**.

This year, our week-long residency begins February 26th.

For more information about auditions, dates and permission slip:

<https://forms.gle/GjfzcA9w4t44sKjj8>

(Hard copies + Spanish copies available in the office.)

**NOTE: We are still looking for 1 family to host one of the MCT Directors for the week. Reach out to Aubrae Lutz ([aubraelutz@gmail.com](mailto:aubraelutz@gmail.com)) if you are able to help!**

---

## Bridlemile Foundation Auction

Did you know you can now follow along on the upcoming Auction and other exciting events through the Bridlemile Foundations Instagram account? Follow the [Bridlemile Foundation](#) on Instagram to stay in the loop on important news & upcoming events!

And don't forget about our [Bridlemile Beagles Instagram](#) as well as [Bridlemile PTA Instagram](#). 🐾

For PPS district announcements and news you can also check out the [PPS Instagram](#)!

---



# Rescheduled Ida B. Wells Modernization Public Design Workshop, 2/3 at 1pm

[Español](#) | [Tiếng Việt](#) | [Русский](#) | [Soomaali](#) | [中文](#)

**Come provide your input for the new Ida B Wells campus!**

Please join your friends and neighbors at the Ida B. Wells Public Design Workshop on **Saturday, Feb. 3rd from 1:00p.m. to 3:00p.m. in the Ida B. Wells Cafeteria**. Come early at 12:30p.m. for a light lunch.

The Ida B. Wells modernization website, <https://www.pps.net/IdaBWellsBond> will keep you updated on the latest developments, has previous meeting minutes and presentations to view and provides a list of upcoming engagement opportunities. You can also join the Ida B. Wells Modernization project mailing list by emailing [Wellsbond@pps.net](mailto:Wellsbond@pps.net).

Thank you for helping us create a modernized Ida B. Wells High School.

---

## PPS Decarbonization Roadmap: Community Input/Listening Sessions

[Español](#) | [Tiếng Việt](#) | [中文](#) | [Русский](#) | [Soomaali](#)

PPS is [seeking input](#) from students, teachers, school staff, and community members about how to build a long-range plan to lower carbon emissions in our district. Decarbonizing the district will improve community health and comfort, resiliency, and student learning outcomes while lowering operating costs and reducing our carbon footprint.

### WE WANT YOUR INPUT!

Please join PPS and our decarbonization team to provide your feedback! There will be five in-person sessions, and one virtual session for interactive and collaborative feedback. There is also an option to provide input through an online survey.

Please [click here to sign up for an in-person or virtual meeting](#). You can also choose to [provide written feedback through this online survey](#).

---

## SW Portland Little League

Spring Little League Information can be found here: <https://swpll.org/content/20015/Spring-Info>

For information on financial assistance please visit our [financial assistance page](#).

SWPLL Website: [click here](#)

---

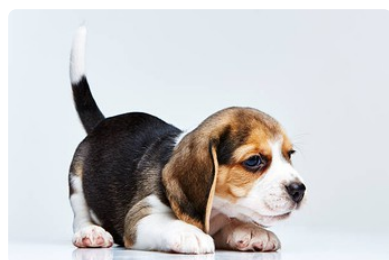
[Click Here for PTA and Foundation Newsletter](#)

---



## FRIDAYS ARE BRIDLEMILE SPIRIT DAY!

Wear a Bridlemile shirt or Bridlemile colors (blue and yellow or gold) on Fridays!



### Bridlemile Elementary School

Instagram: [@bridlemile\\_beagles](#)

Email: [bridlemile-office@pps.net](mailto:bridlemile-office@pps.net)

Website: <https://www.pps.net/bridlemile>

Location: [4300 Southwest 47th Drive, Portland, OR, USA](#)

Phone: [503-916-6292](tel:503-916-6292)

### Bridlemile Elementary School Website

All Friday Flyer messages are archived on the Bridlemile elementary school website.

Questions, comments or feedback about this newsletter? Just hit reply or email us at [Bridlemile-Office@pps.net](mailto:Bridlemile-Office@pps.net).



### Bridlemile Elementary School

<https://www.pps.net/bridlemile>



4300 SW 47th Dr.

Portland, OR 97212

503-916-6292

[bridlemile-office@pps.net](mailto:bridlemile-office@pps.net)

