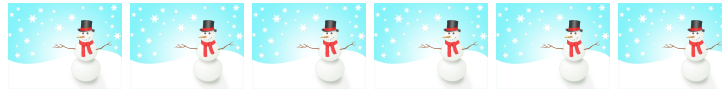


Bridlemile Friday Flyer



12/18/2020

IMPORTANT DATES:

Dec 21st- Jan 3rd	NO SCHOOL- Winter Break
Jan 4th	School Resumes
Jan 12th	PTA Board Meeting
Jan 18th	NO SCHOOL- MLK Day

WHAT'S NEW INSIDE THIS ISSUE

- Message from the Principal & Office
- Bridlemile Student and Parent [Race and Our Community Survey](#) (links provided below)
- Counselor's Corner- [Counselors Newsletter 12/18/2020](#)
- From Mr. Stenger- S.T.E.A.M Night 2021- Save the Date, Seeking Helpers
- Racial Equity and Social Justice Team Check-In
- PTA/Foundation - [PTA newsletter](#)

Thank you to everyone who joined us for last night's Community Meeting! We hope you and your students enjoyed the performance by Gideon Freudmann- here is the link to the video: [Performance](#). We will provide a link for you to the community meeting portion of the evening in a future Flyer.

MESSAGE FROM THE PRINCIPAL



Dear Bridlemile Community,

As we head into this holiday season and New Year, I would like to wish everyone a safe, relaxing and joyous time. I hope that you will take time to reflect on some positive things that we were all able to accomplish during this difficult time in our country as well as our school and the PPS District.

You all deserve to be commended for doing the best that you can with what you have been presented and I believe we possess the necessary strength to continue to move forward successfully in this present school year.

I am continually grateful for relationships built, the hard work of teachers and staff and the commitment of students and parents. We definitely will not be able to succeed without the help of one another.

So enjoy this season, enjoy the break, enjoy your family and let's all come back in the New Year ready to finish this year out strong and remember, TOGETHER WE WILL!

Sincerely,
Jerome townsend

FROM THE OFFICE

We want to wish you all a wonderful Winter Break and a Happy New Year!! Whatever holiday you are celebrating, hope you are warm, safe, healthy, and surrounded by family, friends, and good cheer!! See you in 2021!!

Best,
Sonja, Dana, and Malinda

BRIDLEMILE: RACE AND OUR COMMUNITY- STUDENT AND PARENT SURVEY

Dear Bridlemile Community,

One of the most important goals of the Bridlemile staff and community is to make our school a safe space for all. With the goal of student safety and wellbeing in mind, anonymous surveys for staff, students, and community (parents and caregivers) have been created to gather information.

There are many forms of inequity. The focus of the surveys is to inform antiracism efforts in our community. The data will serve as a starting point for collective engagement in matters of racial justice and will intersect with other aspects of injustice.

The writers understand the surveys are not perfect. Likewise, your answers do not need to be perfect! There are no right or wrong responses to the questions and the surveys are private. Please answer and allow your child to answer honestly. A wide range of responses are expected, and sometimes children do not always remember what adults have talked to them about.

Taking this survey helps Bridlemile better understand the lives of our students. All experiences are important and valuable. Thank you for sharing your voice.

Please complete this survey by 5 pm on Sunday, January 3, 2021.

Sincerely,
Jerome Townsend

[Community Survey](#) [Student Survey](#)

DISTRICT NEWS

For the latest district news click here: [PPS District Homepage](#)

At home strategies for families for Distance Learning [resources for P-12 strategies](#)

Family Resource-PPS At-Home Strategies for Distance Learning - Taking Mindful Breaks Flyer

Click here [Grounding Moment \(break option\)](#) for at home strategies to taking mindful breaks during distance learning. The flyer also contains links to more detailed information on the strategy, as well as a link to the MTSS At-Home Strategies Website, accessible to families wishing to learn more.

MESSAGE FROM NUTRITION SERVICES

DECEMBER MEAL SERVICES

On Friday, December 18, we will be handing out food boxes with seven days' worth of meals. Families who are signed up for meal delivery will also receive the food boxes. Most items in the food box will be safe to store at room temperature ([see food storage guide](#)).

This will happen during our regular food distribution window, from 3 to 4:30 p.m., at the 35 schools sites we use for food service while we are in distance learning ([see sites and map](#)). We ask that you practice social distancing and wear a face mask.

Our meal service will pause while schools are closed during the winter break, from December 21 to January 1. Meal service will resume Monday, January 4.

If families need further assistance in obtaining meals while school is out, please visit www.pps.net/nutrition and click on the "Resources for Locating Food" and "Food Benefits for Families" tabs.

COUNSELORS CORNER

This week's counselor Newsletter: [Counselors Newsletter 12/18/2020](#)

MESSAGE FROM MR. STENGER

STEAM Night 2021: Looking for STEAM experts!

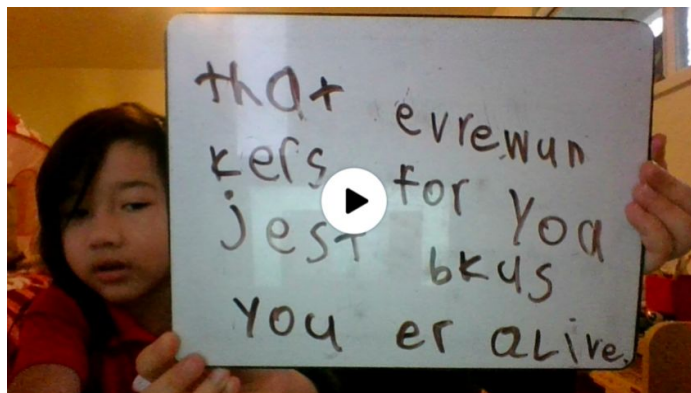
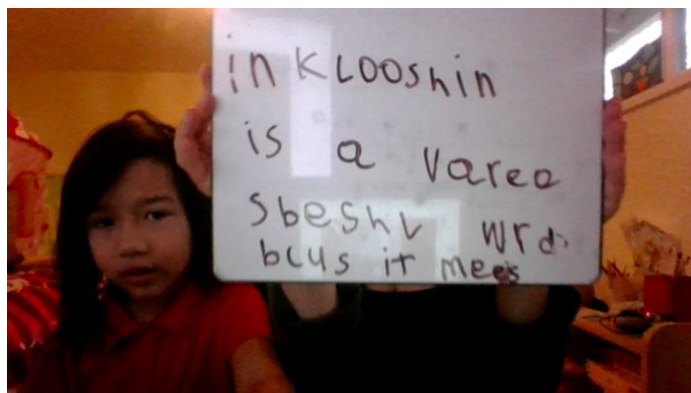
Save the date for Thursday, March 4, for STEAM Night with Bridlemile! We are planning a virtual Science Technology Engineering Art and Math (STEAM) night that will offer some different experiences from previous years and one that is created with a focus on equity. We are looking for scientists, science teachers, engineers, technology experts, artists, mathematicians and you to help make this an amazing experience for students and families. If you'd be interested in helping out, please join us for a brainstorming session on Thursday, January 7, at 5 p.m.

Please send an email to Patrick Stenger (pstenger@pps.net) or Amy Miner (amminer@pps.net) to let us know and get a meeting link in January.

RACIAL EQUITY AND SOCIAL JUSTICE TEAM CHECK-IN

COMMUNITY ACTION

This month we asked the community to think about the word “equity.” The Kindergarten classes heard one version of the classic “Gingerbread Man,” featuring a Gingerbread with a disability. The book was written as a dedication to the author’s daughter, who has a disability, who rarely saw herself mirrored in books. *One component of equity is removing barriers to authentic inclusion.* Kindergarten student Katherine Ippolito captured the idea of inclusion beautifully:



“Inclusion is a very special word because it means that everyone cares for you just because you are alive.”

Katherine, thank you for sharing these important words with your community.

Community, what will *you* do over Winter Break to practice inclusion?

COMMITTEE UPDATES

- The Bridlemile Racial Equity and Social Justice (BRESJ) committee partnered with

community members and Principal Townsend to create a survey centered on racial equity for our school staff, students and community. The link to the Parent and Student surveys are included in this Flyer (see above) and will also be sent out in a separate email out to the community today.

- The BRESJ committee is supporting the formation of a community led equity team. Work is underway to develop community learning and action events. Keep an eye open for future meetings; *all* Bridlemile families are invited to participate in the planning process as well as the events! Contact Amy Armstrong, Bridlemile parent, with any questions: yogamonkey@comcast.net

RESTORATIVE JUSTICE PRESENTATION FOR BRIDLEMILE STAFF

This week Jasmine Springs, a Restorative Justice Specialist from PPS, gave a presentation to Bridlemile Staff. The goals of this excellent presentation were as follows:



Today's Goals

- Understand that it is not bad to talk about race
- Understand that talking about race becomes more comfortable the more you talk about it
- Get inspired to either start talking about race or dive deeper in to the conversation

The graphic features six handprints in various colors (red, yellow, orange, light yellow, brown, and dark grey) arranged in two rows of three. The title 'Today's Goals' is positioned at the top right of the graphic area.

How do YOU feel talking about race?

PPS HATE SPEECH RESPONSE FORM

To ensure a learning environment of safety, security and belonging for every student, PPS does not tolerate hate speech nor acts of discrimination. If you experience or witness hate speech, please fill out this [Hate Speech Response Form](#).

PTA/FOUNDATION NEWS

[PTA newsletter](#)

Do your holiday shopping while supporting Bridlemile.

Talise Garden ([412 NW 11 Ave Portland, OR 97209](#) (503) 608-0328) - your one stop shop for indoor plants; from your everyday to exotics, to carnivorous, as well as great plant decor and accessories. They are giving **30% of all purchases back to the school**, when you **mention Bridlemile**, while checking out at their Northwest location.

Support Bridlemile

We need your help to ensure that Bridlemile continues to offer a great educational experience for all of our children. You can **make a one-time donation** to the Bridlemile Foundation through the Circle of Giving or set up a recurring donation: <https://bridlemileschool.org/donate>

You can also **donate your bottles and cans** through BottleDrop. You can either [donate your existing redemption balance online through your BottleDrop account](#) or request blue bags and barcode stickers at bridlemilebottledrop@gmail.com.

Please consider doing your holiday shopping through Charleston Wrap and benefit Bridlemile at the same time! Friends and family may also order from the website if they have your student's participant code.

For the participant code:

1. Go to <http://www.charlestonwrap.com> with Access code: 11094.
2. Fill in your email and phone number to see what your student's code is.

Thank you to all who have helped us with this fundraiser so far!

If you do not wish to purchase items from Charleston Wrap but still want to donate, go to www.bridlemileschool.org

Thank you!

Your Bridlemile PTA

COMMUNITY NEWS

Wilson High School Booster Club Christmas Tree Sale- **Final Weekend-ALL TREES \$25 (about 50 trees left)!!!!**

We'll be open in the A-Boy parking lot (7365 SW Barbur Blvd.) Friday 4-5:30PM and Saturday 10AM to 5:30PM. All the funds raised go to support the Wilson school clubs and sports teams. Hope to see you there!

District Approved Community Fliers

[Oregon Health Plan Free Health Insurance Coverage Flier](#)



[School Website](#)

503-916-6292

Friday Flyer Archives: [School Website](#)

PTA/Foundation: [Parent Resources / Bridlemile](#)

PTA Website: <https://bridlemileschool.org/>