

THE

ROSEWAY
HEIGHTS
SCHOOL

NEWS

ROSEWAY HEIGHTS’ MISSION IS TO HELP ALL STUDENTS ACHIEVE THEIR POTENTIAL AND BECOME CREATIVE, CONFIDENT AND COMPASSIONATE LIFE-LONG LEARNERS.

Dec. 10, 2015

Dear Roseway Heights families

We are having great support with our Penny Drive. It’s a wonderful example of what a caring community looks like! The funds being raised by our students are being equally divided three ways: a scholarship in the name of Rachel Mosel’s son who passed away in September, helping with the medical expenses for a student who has been battling cancer, and supporting RWH families in need this holiday season. The drive continues through this Friday, concluding with the staff vs. 8th graders volleyball game that starts at 2:30 and will cost \$.25 to watch (those funds going to the Penny Drive).

We have had very generous donations of winter coats both from the community and from a local dental office. We have been trying to ensure any RWH student who needs a warm coat has gotten one and then will be passing the coats on to other schools who can also use them. Please remember that students go outside for recess everyday unless it’s raining so having a coat is necessary. (If it is very cold, there is an inside game option available in the large gym).

We are now fully staffed. I don’t think I have formally welcomed the new staff to the community as a whole. I’m pleased to have them join our RWH community!

Stephanie Millis joined us as the kindergarten teacher replacing Cynthia Wojack and Roz Shenker.

Kristina Machell is our learning center teacher supporting students in grades 3-5, joining Liz Mayer and Kellie Baier.

Beth Ivester is teaching one section of 6th grade math (Grace Groom dropped back to just half time technology instruction).

Will Bromley, Zoe Carey, and Katrina Mathews are our new para educators supporting the students in our SLC 2-5 Behavior classroom.

We are in session through Friday, Dec. 18. Wednesday, the 16th is a late opening.

Students will return after winter break on Monday, Jan. 4. It will be a busy time but we will keep the focus on learning every day.

I hope you all have a wonderful winter break and Happy Holidays!

Sarah Lewins, Principal

Events @ RWH

Spirit Week Concludes
“Crazy Day”
Friday, Dec. 11th

Holiday Craft Fair
Friday, Dec. 11th, 2:15-5:30 p.m.

Parent’s Night Out
Friday, Dec. 11th

Staff vs 8th Grade Volleyball
Game
(No Open Gym)
Friday, Dec. 11th

3rd Grade Play
“Our Portland Play”
Tuesday, Dec. 15th,
Thursday, Dec. 17th

Late Opening
Wednesday, Dec. 16th

Winter SUN Packets Due
Wednesday, Dec. 16th

Madison HS Music Winter
Concert
Thursday, Dec. 17th
7:00 PM
Madison’s Hibbard Auditorium

Fall SUN Classes End
Friday, Dec. 18th

Winter Break!
Monday, Dec. 19th – Sunday, Jan.
3rd

Classes Resume
Monday, Jan. 4th

Winter SUN Classes Begin
Monday, Jan. 11th

Madison HS Open House
Tuesday, Jan. 12th

SAFETY PATROLLERS OF THE MONTH

NOVEMBER

SaraMia Surbrook
Isaiah Taylor

DECEMBER

Siena Mrazik
Eli Harrington

MADISON HS OPEN HOUSE POSTPONED

The Open House originally set for December 8th has been postponed, due to the historic rains. Prospective Madison Senators currently in the 7th and 8th grade are cordially invited to attend the school's Open House, rescheduled for **January 12th at 6:15 PM**. Madison offers everything from forensics, drama, engineering and robotics to Senators Scholars college preparation and 14 sports programs. The school is also one of three high schools that will be fully modernized if voters renew the School Building Improvement Bond next year. Come see what this dynamic and diverse school has to offer, courtesy of Principal Petra Callin.

DO YOU DRIVE YOUR STUDENT/S TO SCHOOL?

All students are to be dropped off at the west side of the building in the parking lot. We have support staff in the west parking lot — along with our well-oiled safety patrol — there to make your drop off safe and swift.

Cars stopping (even if briefly for a quick drop off) in front of RWH cause traffic jams, jeopardize walkers' safety and often make it impossible for busses to pass through.

If you need to park and walk your child in, please park down a side street.

Drop off in the west parking lot or down the side streets — NOT in front of the building on Siskiyou Street. Thank you!

DON'T MISS FRIDAY'S PARENT'S NIGHT OUT!

Need some time to holiday shop, have dinner with your partner, or just some time for yourself? Well, you're in luck! The 8th graders, who are fundraising for their east coast trip this spring, are hosting a fun night in for your kids and a Parent's Night Out for you!!

Friday, December 11th, 6-9pm, MPR
\$20 per child, \$10 each additional child per family
K-6th graders welcome! Fun to be had with 8th grade leaders (and parent volunteers) – obstacle course, pizza eating, crafting, open gym, movies and popcorn, coloring contests and more!

If you can, please RSVP Stephanie Tull at stephtull@comcast.net or text 971-216-1251 so we can make sure to have enough pizza & supplies.
Drop-ins are welcome, too. Hope to see you there!

MADISON HS MUSIC WINTER CONCERT

Thursday, Dec. 17th

7:00 PM

Madison's Hibbard Auditorium

HOLIDAY CRAFT FAIR!

Roseway Heights second annual Holiday Craft Fair is **this Friday, December 11th from 2:00 – 5:30 PM** in the Multi-Purpose Room.

Come support our school community and shop for gorgeous, unique, handmade gifts and food for everyone on your Christmas list. The public is welcome. There are still a few tables left. If you are interested in selling your wares, contact meghannstreetbuswell@gmail.com

EVERY KID IN A PARK!

4th Graders!

Beginning September 1st all kids in the fourth grade have access to their own Every Kid in a Park pass at www.everykidinapark.gov. This pass provides **FREE access to national parks, national forests, national wildlife refuges, and more!** The Every Kid in a Park pass is good for the 2015-2016 school year, until August 31, 2016. Information on obtaining the pass is available by visiting www.everykidinapark.gov.

MUSIC NEWS

The holidays are upon us. Here at Roseway Heights we include music for all our diversity. My main focus has been teaching American and international folk music, which draws from our heritage. However, during the holidays, it's fun to learn Halloween, Patriotic, Thanksgiving and Christmas songs. We are also learning Jewish cultural and holiday music, and music that celebrates Kwanzaa.

For those whose beliefs do not have them singing holiday or national music, we include fun winter songs and lots of seasonal songs. The rules can sometimes be confusing, as we have seen in the news lately. The goal of our music program is to be inclusive and provide a rich variety of music so our children have a nice repertoire of songs to draw from. If you have any questions or concerns regarding music selection please feel free to contact Andrew Baird at abaird@pps.net.

STAFF vs. 8TH GRADE VOLLEYBALL GAME!

Friday, December 11th, 2:30 PM.

Cost: 25¢

Location: Big Gym

All proceeds go towards the Penny Drive!

Don't miss this epic "Clash of the Titans!"

DRAMA NEWS

Hello Roseway Heights students & families! We would like to introduce ourselves – we are New Moon Productions, a children's theater company right here in Portland that specializes in bringing high quality theater programs to schools, organizations, and groups. Teachers Michael Wehrli, Sara Kennedy Adams and Amy LaRosa-Peters are delighted to be working with the students of Roseway Heights! Sara will be working with the 3rd and 4th graders, Michael with the 5th graders and Amy with the middle schoolers. More info is below. For more about New Moon, check out www.newmoonproductions.org.

3rd Grade Play: Portland is known for being weird but it's a great place to live and grow up. Join the 3rd grade classes as each class shows you how Portland got its name and how it became the city we live in today. Performances of *Our Portland Play*, written by Marjorie Anderson and adapted/directed by Sara Kennedy Adams, will take place Dec. 15 and 17 (*times TBD*).

4th Grade Play: It was a treacherous and dangerous decision but still, so many Americans set off for an epic journey in search of a new life. Step back in time with the 4th grade classes as they take you on an adventure, *Remembering the Oregon Trail*, adapted/ directed by Sara Kennedy Adams. Performances May 12 and 13, 2016 (*times and class TBD*).

5th Grade Play: Get ready for a hilarious mash-up of Alice In Wonderland and several other fantasy stories in this farcical comedy called *Law & Disorder: The Case Of The Stolen Tarts*. Written and directed by long-time theater professional, Michael Wehrli, the play will feature a wealth of funny characters and laughs will be aplenty! Rehearsals will start mid-January, with performances Feb. 17 and 18.

Middle School Play: This is one twisted family tree! Fun and frenzy join together in *The Addams Family* written and adapted by Michael Wehrli. Join us in bringing these dark and boisterous characters to life on stage. Directed by Roseway Heights parent and local theater artist, Amy LaRosa-Peters, *The Addams Family* is sure to be a hit!

A cast list will be announced Dec. 14, and rehearsals will begin Jan. 18 so actors will have scripts during Winter Break. Performances will be March 10 and 11.

eSCRIP FUNDRAISER HOLIDAY CONTEST

Between now and Dec 31, whoever raises the most money using **eScrip.com** will win a \$25 Amazon Gift Card. Buying your Christmas and Hanukkah presents will raise money for the PTA. Your vacation travel (hotels, car rentals, and food) will, too!

What it is:

eScrip is a “sign up and forget it” fundraiser that costs you NOTHING. Once you register at **eScrip.com**, the Roseway Heights PTA will earn up to 12% of the shopping you are already doing!

To sign up:

- 1) Log on to **www.eScrip.com** and go to "Sign up."
- 2) Choose Roseway Heights as your organization.
- 3) Register all your credit/debit cards.

****HOLIDAY SCRIP!****

It's that time of year for Gift Cards! Please think about purchasing Scrip this holiday season to support our school. We have *dozens* of retailers that participate – Target, Amazon, GAP, Macy's, Nike, iTunes, Powell's, REI, and many more! It's simple – you buy the gift card at a dollar for dollar value exchange, and participating retailers give our school anywhere from a 3%-50% rebate. ALL the funds raised by Scrip help our teachers with field trips and enrichment programs.

Need a Teacher Gift? This year, when you place your personal holiday scrip orders, you can also show your appreciation to ALL the staff members who make Roseway Heights School so amazing! Add your contribution to our SCHOOL-WIDE teacher gift certificates for scrip! Keep an eye out for more information in your child's back pack, or email rosewayheightsscrip@gmail.com to find out about this great way to thank our amazing RWH staff.

Questions? Contact Alicia Pollock at 971-235-7119, or email stargrrl@comcast.net. Sign up now and raise money while you shop and eat!

SCRIP PROGRAM

Whether you're a returning RWH family, or brand new to our community, you've likely heard of Scrip. So what exactly is Scrip? It's fun, it's easy, and it raises thousands of dollars for our school!

Simply put, Scrip means gift cards and gift certificates. It's a dollar-for-dollar value exchange, where you purchase a gift card or gift certificates from one of our participating retailers. The best part? These retailers contribute anywhere from a 4-43% rebate to our school on the sale of the gift cards. It's really as simple as that. You buy the gift card at face value, and our school gets money!

So how do you purchase Scrip?

Option 1: Complete an order form. Personal orders are placed weekly on Tuesday morning. Completed order forms including payment (cash or check made out to RWH Scrip) can be dropped into our Scrip envelope in the school office no later than Tuesday at 8 a.m. Order forms can be picked up in the school office, from the Scrip desk, or electronically on the PTA Facebook page.

Option 2: Stop by the West entrance after school to purchase directly from our desk. We are open M-W-F from 2-2:30 p.m. We keep all our bestsellers on hand: Fred Meyer's, New Seasons, Papa Murphy's, Safeway, Pizzicato, Petco, Amazon, Starbucks and more! We also sell Chinook Books. Sales at the desk are cash or check only.

We look forward to a successful year ahead. Try Scrip today!

AUCTION 2016: A ROSEWAY HEIGHTS ODYSSEY

“Bridge to potential volunteers, beam me up 2-4 dedicated people to join the procurement team.”

Needed are committed volunteers to make calls, write emails, talk face to face and follow up, follow up, follow up! We ARE having an auction this year and let's make it an OUT OF THIS WORLD event.

The Roseway Heights community is a strong one and no matter what boundary changes take shape, ultimately the funds raised at the 2016 auction will impact ALL our students. If interested in joining the SCI FI procurement team please email Antje Gillard antjegillard@gmail.com.

CITY OF PORTLAND SUN PROGRAM

SUN program session dates are:

Fall term: 9/28/15 to 12/18/15

Winter term: 1/11/16 to

3/11/16 **Spring term:** 4/4/16 to 5/27/16

Winter SUN Packets Due **12/16**

Fall SUN Classes End **12/18**

Winter SUN Classes Begin **1/11**

A FRIENDLY REMINDER FROM THE KITCHEN

Please remember to check your student's account once a week to make sure they have money to eat breakfast and/or lunch.

Negative Balance Letters will be sent home every Tuesday. Ask your students if they received one. We appreciate your help as we continue to provide good and nutritious meals for your students. Thank you!
Roseway Heights Cafeteria

Caring is our character trait of the month!



Our Penny Drive is happening now! Please be sure to send in your pennies; these funds go to help three different causes that are all local and meaningful to Roseway Heights.

CARING is our character trait of the month.

One way to show caring is to share what we have with others.

Have this conversation with your child.

Talk about how we can share with others whatever we have in many different ways.

We not only share of our resources, but we can offer a kind word, a warm smile or a helping hand!

Emily Squires was the guest speaker at our SOAR meeting on November 30. She is the education specialist at New Avenues for Youth/ SMYRC (Sexual Minority Youth Resource Center). Our next meeting is Monday, Dec. 14.

The middle school has a Student Council! Our members are Isla Challenor, Sahara Lally, Katherine McBee, Bridget Graves, Annie Hindes, Eli Rose-White, Enriq Fernanadez, Kieran Diaz-Tobin, Grace Dougherty, Stacey Nguyen, Melody Martinez, and Katelyn Mapes. These students, along with Mr. Krohn and Ms. Van, will lead school projects, plan for events and dances and be involved in other school leadership activities.

The high school open house night schedule is out and is as follows:

Benson: All 8th graders districtwide can apply through the lottery.

Jefferson: Guaranteed access for 8th graders who live in the Jefferson catchment/dual assignment area; all other 8th graders district-wide can apply in the lottery.

Madison: Many students who live in the Madison attendance area may be attending K-8 or middle schools outside of the attendance area. We are sending them postcards but appreciate your efforts to reach 8th graders attending outside of the Madison feeder schools so that they have the opportunity to visit their neighborhood high school. If you need assistance identifying these students in your K-8 or MS, please let me know.

Roosevelt: Guaranteed access for 8th graders in the attendance area and by student selection in the Jefferson dual assignment zone at Beach, Chief Joseph/Ockley Green and the western half of Faubion's catchment.

Schedule of 8th grade info sessions (also see attached flier)

Benson High School: Feb. 11 & 12, 6 pm- Tech Show. Come view student work.

Cleveland High School: Feb. 4, 7 pm

Franklin High School: Dec. 9, 6:15pm

Grant High School : Dec. 2, 6pm; Jan. 20 & Feb. 17, 8:30 am

Jefferson HS-Middle College for Advanced Studies: Dec. 3 & Jan. 13 6:30pm; Jan. 28 - Tours for students outside the dual assignment area.

Lincoln High School: Feb. 4, 6 pm

Madison High School: Jan. 12, 6:15 pm

Metropolitan Learning Center: Jan. 14, 9:30 am & Jan. 20, 6 pm; Feb. 11, 9:30 am

Roosevelt High School: Jan. 12, 6 pm

Wilson High School: Shadow a student on Mondays through April. Sign up:

www.pps.net/schools/wilson/ www.pps.net/schools/wilson/

During this busy season, take some time to slow down. Make it a priority to give your child the most valuable gift you can give to them; the gift of your time and attention.

- Laurie Vandenburg lvandenb2@pps.net or ext. 70193
- Jennifer Goslin jgoslin@pps.net or ext. 70191
- Tara Vargast vargast@pps.net or ext. 70120



Winter Music Festival



Roseway Heights – MPR

Thursday, January 21st, 2016 at 1:15 & 6:30 pm

Students should arrive at 1:00 & 6:15 in the MPR

PROGRAM INCLUDES:

6th grade explorers, 5th, 4th, and 3rd Grades

The Grateful Statues Return

Singing and Orff Instrument Performances



Questions? Please contact Mr. Baird, Music Specialist at abaird@pps.net



Madison High School Winter Sports Calendar:

MEN'S BASKETBALL

DATE	OPPONENT	SITE	TIME
DEC. 2	PARKROSE	HOME	4:00/5:45/7:30
DEC. 4	FOREST GROVE	AWAY	5:45/5:45/7:15
DEC. 8	GRESHAM	HOME	4:00/5:45/7:30
DEC. 11	SOUTHRIDGE	HOME	4:00/5:45/7:30
DEC. 15	WILSON	AWAY	4:00/5:45/7:30
DEC. 18	WILLAMETTE	AWAY	5:15/5:15/7:00
DEC. 28-30	BARLOW TOURNAMENT V)	AWAY	12:00/12:00/12:00
JAN. 5	LINCOLN	AWAY	4:00/5:45/7:30
JAN. 7	JEFFERSON, PORTLAND	HOME	4:00/5:45/7:30
JAN. 9	BENSON (V)	AWAY	12:00

WOMEN'S BASKETBALL

DATE	OPPONENT	SITE	TIME
DEC. 2	WILSONVILLE (JV/V)	HOME	6:00/6:00
DEC. 4	MCKAY	HOME	4:15/5:45/7:30
DEC. 8	ST. HELENS	AWAY	5:30/5:30/7:15
DEC. 11-12	REYNOLDS TOURNAMENT (JV/F/V)	AWAY	5:45/7:30/7:30/TBA/TBA/TBA
DEC. 15	WILSON	HOME	4:15/5:45/7:30
DEC. 18	WESTVIEW	HOME	4:15/5:45/7:30
DEC. 28	EVERGREEN TOURNAMENT (V/JV)	AWAY	11AM/11:30
DEC. 29	EVERGREEN TOURNAMENT (JV/V)	AWAY	1:00/3:30
DEC. 30	EVERGREEN TOURNAMENT (V/JV)	AWAY	2:00/5:30
JAN. 5	LINCOLN	HOME	4:15/5:45/7:30
JAN. 7	JEFFERSON, PORTLAND	AWAY	4:15/5:45/7:30
JAN. 8	BENSON (F/JV)	HOME	5:45/7:30
JAN. 9	BENSON (V)	HOME	TBA

SWIM

DATE	OPPONENT	SITE	TIME
DEC. 4	LINCOLN	DISHMAN POOL+	6:00
DEC. 11	FRANKLIN	DISHMAN POOL+	6:00
DEC. 18	CLEVELAND	DISHMAN POOL+	6:00
JAN. 13	GRANT	COLUMBIA POOL+	7:00

WRESTLING

DATE	OPPONENT	SITE	TIME
DEC. 2	PIL MEET (F/NOVICE)	CLEVELAND	TBA
DEC. 4	GLADSTONE TOURNAMENT	AWAY	TBA
DEC. 9	MEET (F/NOVICE)	WILSON	TBA
DEC. 16	WILSON	AWAY	TBA
	MEET (F/NOVICE)	LINCOLN	TBA
DEC. 18	GLENCOE TOURNAMENT	AWAY	TBA
JAN. 2	SANDY TOURNAMENT	AWAY	TBA

Library Book Mark Contest!

Roseway Heights has some *amazing* artistic talents! This is just a sample of the many amazing entries!

Violet Buswell, 4th grade, "Discover a new book"
Isla Challenor, 6th grade, "Readers Live..."
Cindy Le, 7th grade, "Every Adventure ..."
Matthew Le, 4th grade, "You have the powers of reading"

Martin Nguyen, 8th grade, "A book is a device...."
Megan Prehn, 7th grade, "Read" with amazing artwork!
Jack Rispler, Kindergarten, "Fly into a book"
Liliana Serna, 3rd grade, "Cactus people"





We're collecting Box Tops again! Please look for the little pink rectangles on cereal boxes, granola bars, Ziploc bags, and many other products! Cut them out and turn them in to the box on top of the glass display case next to the office. Please put them in a bag or envelope with your child's teacher's name on it.

Mrs. Spohn's Kindergarten wins the popcorn party! Thank you to everyone who brought in Box Tops all Fall – we are well on our way to our \$1,000 goal! Keep bringing them in until the end of the year! Questions? Ask Amy Bazley abazley@hotmail.com. Thanks!

ROSEWAY HEIGHTS
Craft Fair

FRIDAY
DECEMBER
11TH

FROM 2PM
UNTIL 5:30

IN THE MPR
ROSEWAY HEIGHTS
7334 NE SISKIYOU

COME AND ENJOY AN ASSORTMENT OF UNIQUE
HANDCRAFTED ITEMS FROM OUR SCHOOL COMMUNITY

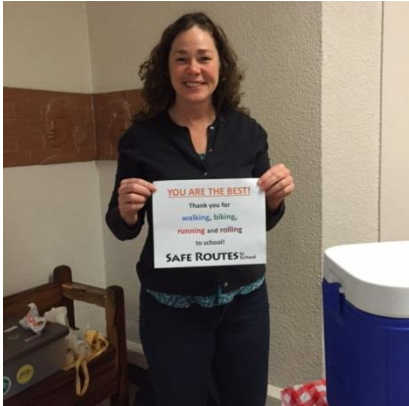
CHILDREN'S TABLES ARE \$10 FOR PURCHASE
ADULT TABLES ARE \$25 FOR PURCHASE

PLEASE EMAIL mcghannstreetbuswell@gmail.com
TO RESERVE YOUR TABLE

Hot Cocoa for our Monthly Walk and Bike Day: A Huge Success!

Janis McDonald, from the City of Portland Bureau of Transportation/Safe Routes to School, joined our community at Roseway Heights for our December Walk and Bike Day. We had 200 kids participating with walking, biking or riding the bus and Janis and our Walk and Bike committee handed out 160 cups of hot cocoa, 25 Clif bars, and lots of incentives and maps! Our program at Roseway Heights continues to be a success with the support of our principal, Sarah Lewins, and staff, as well as parents and all the kids who participate! Thank you so much for a great 2015 of self-propelling and we will see you in 2016! Keep walking and biking!!

-Your Walk and Bike committee
Questions? Mary at mdrink@yahoo.com



PANTHERPAW
OF THANKS

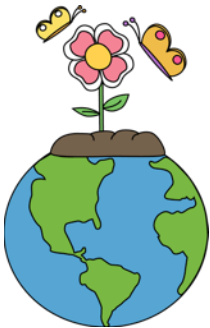
The paw of thanks goes out to **Lisa Backstrom**, for her awesome donation of coats, backpacks, hats and gloves from Columbia Sportswear during our coat drive – also to the Lost and Found Cleanup Crew of **Janna Holm, Katie Van Winkle, Grace Groom, Karen Barry-Gazzo, Antje Gillard and Chantiel Attmore!** Good condition coats and clothes were washed and donated to the Harvey Scott School clothing drive for their community. Next time you see any of them, make sure to give them all a huge Panther Paw!



NEWS FROM
THE ECO-TEAM

Have a few strands of broken holiday lights? Bring them to the Main Office for recycling! There will be a box under the counter to the left of the door. Broken lights will be collected **until the 18th**, and then taken to a local Girl Scout troop who is doing the recycling. Let's keep them out of the landfill!

Have questions or want to get involved with the Roseway Heights Eco-Team? Contact Melissa Mulder-Wright at misakay@msn.com.



President Guinger Huizar
Gh2@pdx.edu

PTA NEWS

Volunteer!
rw hvolunteer@gmail.com

Hello parents, teachers, staff and students,

We are flying through December. A huge thank you to everyone who helped support our school through their many efforts with The Children's Place Fundraiser, The Book Harvest and the Coat Drive. A special thank you to the ladies behind the Coat Drive, Michelle Horan and Karen Barry-Gazzo. And thank you to Lisa Backstrom and Columbia Sportswear for bringing in three boxes of coats, packs, hats and gloves! I am sure the kids are using them this week.

As we wrap up the last two weeks of December, remember we have some fun in store with the Holiday Craft Fair **this Friday, December 11th** in the MPR, from **2:30-5:30**. Special thanks to Meghann Street-Buswell for organizing this. Then, **Parents Night Out** begins afterwards from **6-9 pm**. K-6th grade welcome! \$20 per child, \$10 for each child after. This is a middle school fundraiser and helps the 8th graders who are fundraising for their east coast trip this spring.

Lastly, please join us for our quarterly Coffee Conversations next **Friday, December 18**, after drop off from 8-8:30, in the gallery. Enjoy your winter break!

Regards,
The Roseway Heights PTA Board

Ginger Huizar, President
Coordinator, K-2
Sabrina Henley, co-Vice President
Coordinator, 3-5
Tracy Nunn, co-Vice President
Coordinator, 6-8
Katie Van Winkle, Treasurer

Valerie Klacik, Secretary
Sherrie Burrell, Membership
Brian Sheehan, Scrip Treasurer
Grace Groom, Legislative Liaison

Brenda Britsch, Volunteer
Kris Farrell, Volunteer
Heather Johnston, Volunteer

GET CONNECTED

Stay in the loop with the Rose email
Receive updates on all things Roseway Heights
— visit our website at
<http://www.pps.k12.or.us/schools/rosewayheights> and click on the
'Subscribe' link under the 'Welcome' heading on
the left-hand side—it's that easy!

Check out the Roseway Heights website
Visit our website at
<http://www.pps.k12.or.us/schools/rosewayheights>. For more
information, email Chris Hansen at
rw h@palmerhansen.com.

Portland Public Schools Nondiscrimination Statement: Portland Public Schools recognizes the diversity and worth of all individuals and groups and their roles in society. All individuals and groups shall be treated with fairness in all activities, programs and operations, without regard to age, color, creed, disability, marital status, national origin, race, sex, or sexual orientation. – Board of Education Policy 1.80.020P District Title VI and Title IX Contact: Carolyn M. Leonard, Compliance (503-916-3183)

District 504 Contact: Suzy Harris, Integrated Student Support (503-916-2000 x72124)
American Disabilities Act Contact: Jeff Fish, HR Legal Counsel (503-916-3246)"



Growing Great Schools 2015-16

PPS enrollment is on the rise and projected to grow by another 5,000 students - to 53,000 - by 2025. Combined with consistently strong local support and a reviving economy, this means more revenue and a chance to begin right-sizing schools to have:

Enough classrooms and students to offer a full academic program with reasonable class sizes at all grade levels without relying on temporary grants and parent fundraising. The full academic program includes enrichments such as art, music, language and technology, and learning supports so that all students can excel.

PPS and a community-led advisory committee are collaborating on proposals to manage growth in support of learning with such approaches as moving boundaries, changing grade configurations, expanding existing schools and reopening schools that were closed.

Get Involved

October:

- PPS and District-Wide Boundary Review Advisory Committee collaborate on proposals to manage growth in support of learning.
- Upcoming meetings:** Oct. 8 & 29, 5:45 pm to 8:45 pm, 501 N. Dixon Street, 97227. Public comment invited at start of meeting. Request childcare or interpretation in advance. 503-916-3205.

Construyendo excelentes escuelas 2015-16

Están aumentando las matriculaciones en PPS por otros 5,000 alumnos, hasta 53,000 para el 2025. Debido a la combinación de apoyo local consistentemente fuerte y una economía en recuperación, hay mayores ingresos y la posibilidad de reconstruir programas y escuelas del tamaño adecuado.

Suficientes aulas y estudiantes para ofrecer un programa académico completo en clases con una cantidad de estudiantes razonables en todos los niveles sin depender en fondos temporales. Un programa académico completo incluye clases de enriquecimiento tal como arte, música, idiomas y tecnología y apoyos de aprendizaje para que todos los estudiantes tengan éxito.

En este momento PPS y un comité asesor dirigido por la comunidad están trabajando juntos en propuestas para manejar el crecimiento y apoyar el aprendizaje, tal como mover los límites de las escuelas, cambiar las configuraciones de los grados, expandir escuelas existentes y reabrir escuelas que cerraron.

Participen

Octubre:

- Las Escuelas Públicas de Portland y la Comisión asesora para la revisión de los límites de las áreas de matrícula colaboran en las propuestas para enfrentar el crecimiento del alumnado y para apoyar el aprendizaje.
- Próximas reuniones:** 8 & 29, 5:45 pm a 8:45pm, 501 N. Dixon Street, 97227. Los comentarios del público se escucharán al principio de la reunión. Para solicitar cuidado de niños o interpretación debe hacerlo con anticipación. 503-916-3205.

- **Twitter Town Halls:** Oct. 14, 12-12:30 pm. Follow the conversation at #AskPPS.

- **Facebook Town Halls:** Oct. 15, 12-12:30 pm. On the PPS Facebook page, <https://www.facebook.com/pps.homepage>

November: Community meetings to view and comment on proposals. Stay tuned for dates.

December: Advisory committee uses feedback to refine proposals.

January: Superintendent Carole Smith makes final proposal to the Portland School Board.

January/February: Board considers proposal, takes additional public comment.

February: Potential board vote on final growth management plan.

Fall 2016: Implementation of any board-approved plan expected begins. Current policy allows students attending a school to remain there following boundary change in most cases. The school board would have to approve any proposal to change this policy.

Questions? ppsgrows@pps.net

Join PPS in growing great schools in every neighborhood.

www.pps.net • Click “Growing Great Schools.”

- **Twitter Town Halls:** Oct. 14, 12-12:30 pm. Siga la conversación en #AskPPS.

- **Facebook Town Halls:** Oct. 15, 12-12:30 pm. En la página de Facebook de PPS, <https://www.facebook.com/pps.homepage>

Noviembre: Reuniones de la comunidad para conocer y comentar las propuestas. Espere que anunciemos las fechas.

Diciembre: El comité asesor usa los comentarios para elegir propuestas.

Enero: La superintendente Carole Smith hace su última propuesta al consejo escolar de Portland.

Enero/febrero: El consejo considera la propuesta, acepta comentarios adicionales del público.

Febrero: Un posible voto del consejo escolar sobre el último plan para manejar el crecimiento.

Otoño 2016: Se espera empezar la implementación de cualquier plan aprobado por el consejo escolar. En la mayoría de los casos la política actual permite a los alumnos que asistan a la escuela quedarse allí después de cambios en los límites.

El consejo escolar tendría que aprobar cualquier propuesta para cambiar esta política.

¿Preguntas? ppsgrows@pps.net

Colabore con las Escuelas públicas de Portland (PPS, por sus siglas en inglés), para construir escuelas excelentes en cada vecindario.

www.pps.net • Haga clic en “Growing Great Schools.”



Cố Vấn Gia Đình • Ngày 2 Tháng Mười Một, 2015

Hiểu về các đề nghị cân bằng sĩ số học sinh giữa các trường học

Sĩ số học sinh trong Sở Học Chánh Portland đang gia tăng đều đặn. Đây là cơ hội để tạo thành các trường học xuất sắc trong mỗi khu hàng xóm bằng cách cân bằng sĩ số học sinh giữa các trường học để không có trường nào quá đông hoặc quá ít học sinh và để chương trình giáo dục trong mỗi trường học thích hợp với ngôi trường đó.

Vào ngày 29 tháng mười, PPS công bố hai trường hợp có thể xảy ra để cân bằng sĩ số học sinh. Các đề nghị này là một khởi điểm để cộng đồng thảo luận cách nào các trường học có đúng số học sinh. Quyết định của ban giám đốc điều hành giáo dục sở học chánh sẽ xảy ra vào Tháng Một/Tháng Hai và các thay đổi sẽ xảy ra vào mùa thu 2016 và có thể xảy ra theo từng giai đoạn.

Các đề nghị này phụ thuộc vào ba phương pháp: thay đổi ranh giới một số trường học, thay đổi trường cấp hai và/hoặc trường trung học cho một số học sinh, và thay đổi cấu hình một số trường K-8 thành trường K-5 và trường cấp hai.

Quý vị có thể xem các trường hợp đề nghị tại view the scenarios ở www.pps.net bấm vào "Growing Great Schools" và tại các buổi họp cộng đồng trong Tháng Mười Một. (Xem thời khóa biểu dưới đây).

Bằng cách nào PPS xác định các thay đổi ranh giới có thể xảy ra? PPS tạo ra các thay đổi ranh giới có thể xảy ra bằng cách áp dụng phân tích sĩ số học sinh và năng lực của trường học kết hợp với các giá trị như là giữ khoảng cách từ trường tới nhà càng ngắn càng tốt. Tìm hiểu thêm về cách PPS phát triển các viễn tưởng tại developed the scenarios ở www.pps.net "Growing Great Schools."

Nếu có thay đổi ranh giới trường học của con em tôi, học sinh hiện đang học trong trường đó và các em của học sinh có phải đi học trường mới không?

Chính sách hiện thời cho phép các học sinh đang học ở trường học hiện tại, và các em của học sinh được đi học ở trường đó sau khi thay đổi ranh giới trong hầu hết mọi trường hợp. Các trường hợp ngoại lệ có thể sẽ được đề nghị để cân bằng sĩ số học sinh giữa các trường học xảy ra nhanh hơn. Tuy nhiên, bất cứ thay đổi nào cũng phải được bàn thảo trong giai đoạn tham khảo ý kiến cộng đồng và là một phần của kế hoạch cuối cùng cho ban điều hành giáo dục cân nhắc bỏ phiếu bầu.

Khi nào các thay đổi cho trường trung học có hiệu lực?

Bất cứ thay đổi nào cho ranh giới trường trung học sẽ được xác định sau khi quá trình tham khảo ý kiến cộng đồng là một phần của kiến nghị của Giám Đốc Sở Học Chánh đưa lên cho ban giám đốc điều hành giáo dục sở học chánh trong Tháng Một và cần được bỏ phiếu bầu là một phần của quá trình đưa đến quyết định trong Tháng Một/ Tháng Hai.

Dưới chính sách hiện thời, các học sinh trung học có thể tiếp tục đi học ở trường cũ, và em của các học sinh cũng được như vậy. Các học sinh lớp 9 và các học sinh mới cư ngụ trong khu vực ranh giới thay đổi sẽ đi học ở trường trung học mới vào mùa thu sau khi ranh giới thay đổi. Mỗi năm một cấp lớp học sinh được thêm vào.

PPS có chú ý đến sự ảnh hưởng giá trị bất động sản khi đưa ra các quyết định thay đổi ranh giới không?

Vì ngân quỹ và nhân viên liên quan đến sĩ số học sinh và chất lượng của môi trường học tập liên quan đến năng lực của trường học, PPS

– và tất cả các sở học chánh - thay đổi các ranh giới để phục vụ học tập bất kể sự cảm nhận hoặc ảnh hưởng thật sự đến giá trị bất động

sản. Mục tiêu của quá trình cân bằng sĩ số học sinh PPS là để có các trường học xuất sắc trong mỗi khu hàng xóm, như thế sẽ làm khỏe mạnh và đầy sinh lực cho toàn thành phố.

Tại sao PPS đề nghị đổi nhiều trường K-8 trở thành các trường K-5 và các trường cấp hai?

Thời gian đã chứng minh có nhiều thử thách để cung cấp một chương trình giáo dục vững mạnh trong các trường K-8 để đáp ứng nhu cầu của các học sinh cấp hai. Nhiều ngôi trường K-8 là các trường tiểu học trong quá khứ và quá nhỏ. Các trường K-8 có ít học sinh cấp hai rất khó hỗ trợ đầy đủ nhân viên để cung cấp tất cả các môn học học sinh cần có.

Trong hơn 4,000 phụ huynh, học sinh, nhân viên và thành viên cộng

đồng trả lời bản tham khảo ý kiến PPS 2025 vào mùa xuân 2015:

- 71% đồng ý tất cả học sinh nên có cơ hội đi học trường cấp hai (các lớp 6-8) để được cung cấp đầy đủ các lớp ngay cả nếu phải chuyển tiếp nhiều hơn giữa các trường học.
- Các sắc tộc đều thích trường cấp hai hơn (71-77% ngoại trừ hơi khác là có ít người Tây Ban Nha trả lời thích hơn- 59%) và cũng như các người trong mọi khu trường trung học, và các học sinh, phụ huynh, nhân viên và thành viên trong cộng đồng đều trả lời thích hơn.

Chia sẻ quan điểm của quý vị

Các viễn tưởng được đề nghị để cân bằng sĩ số học sinh dự định sẽ được thay đổi để đáp lại các ý kiến của cộng đồng. PPS khuyến khích các gia đình tham gia.

Các buổi họp cộng đồng:

Thứ Hai Ngày 9 Tháng Mười Một, 6 p.m. to 8 p.m., Hosford Middle School, 2303 SE 28th Place

Thứ Ba Ngày 10 Tháng Mười Một, 6 p.m. to 8 p.m., Cesar Chavez K-8, 5103 N Willis Blvd.

Thứ Năm Ngày 12 Tháng Mười Một, 6 p.m. to 8 p.m., Center for Intercultural Organizing, 700 N Killingsworth St. **Thứ Hai Ngày 16 Tháng Mười Một**, 10 a.m. to noon,

Asian Pacific American Network of Oregon, 8114 SE Division St.

Thứ Hai Ngày 16 Tháng Mười Một, 6 p.m. to 8 p.m., West Sylvan Middle School, 8111 SW West Slope Dr. **Thứ Ba Ngày 17 Tháng Mười Một**, 6 p.m. to 8 p.m., Charles Jordan

Community Center, 9009 N. Foss Ave. **Thứ Ba Ngày 17 Tháng Mười Một**, 6 pm to 8 pm, Madison High School, 2735 NE 82nd Ave., **tiếng Tây Ban Nha** **Thứ Tư Ngày 18 Tháng Mười Một**, 6 p.m. to 8 p.m,

Roseway Heights K-8, 7334 NE Siskiyou St. **Thứ Hai Ngày 23 Tháng Mười Một**, 6 p.m. to 8 p.m., Markham K-5, 10531 SW Capitol Hwy.

Các bước kế tiếp

Ủy Ban Cố Vấn Duyệt Xét Ranh Giới Toàn Sở Học Chánh sẽ dùng các ý kiến của cộng đồng để đưa một kiến nghị cho Giám Đốc Sở Học Chánh trong Tháng Mười Hai.

Giám Đốc Sở Học Chánh sẽ đưa kiến nghị lên cho ban điều hành giáo dục sở học chánh để bàn thảo và dự định bỏ phiếu chấp thuận vào cuối Tháng Một hoặc Tháng Hai.

www.pps.net "Growing Great Schools," ppsgrows@pps.net

Các Trường công Portland là cơ hội giáo dục và sử dụng lao động bình đẳng.

中文



December 2015

Dear Roseway Heights Families,

The RWH PTA is sending this out to all families so you can be informed on what is going on with the recent announcement from Portland Public Schools and the 2 scenarios put forth about changing school boundaries. Here's what's behind this change:

PPS enrollment is on the rise and projected to grow by another 5,000 students—to 53,000—by 2025. Combined with consistently strong local support and a reviving economy, this means more revenue and a chance to rebuild programs and begin right-sizing schools to have:

Enough classrooms and students to offer a full academic program with reasonable class sizes at all grade levels without relying on temporary grants and parent fundraising. The full academic program includes enrichments and learning supports so that all students can excel.

Now PPS and a community-led advisory committee are collaborating on proposals to manage growth and support learning, such as moving boundaries, changing grade configurations, expanding existing schools and reopening schools that were closed.

I know you are wondering what this might mean for Roseway Heights. The 2 scenarios are:

In Scenario 1:

Roseway Heights K-8 would become Roseway Heights Middle School

Most of the Roseway Heights K-5 boundary would be divided between Lee K-5 and Scott K-5 while a small portion of the Roseway Heights boundary would shift to Glencoe K-5/Mt. Tabor MS

Vietnamese Dual Language Immersion would move from Roseway Heights to Vestal K-5 and feed Roseway Heights MS

A portion of the Roseway Heights K-8 boundary would change to Franklin HS instead of Madison
Rose City Park: no change

In Scenario 2:

Roseway Heights K-8 would become Roseway Heights Middle School

Most of the Roseway Heights K-5 boundary would go to Rose City Park K-5 and the rest would go to Scott K-5

Vietnamese Dual Language Immersion K-5 would move to Vestal K-5 and Roseway Heights Middle School.

Rose City Park Changes:

Rose City Park K-5 reopens with most of the current Roseway Heights K-5 boundary and portions of the Alameda K-5, Beverly Cleary K-5 and Laurelhurst K-5 boundaries

Rose City Park K-5 would feed to Roseway Heights MS.

ACCESS Academy moves from Rose City Park to Kellogg MS.

For more detailed information on this please find the Boundary Review Bulletin Board at the West Entrance of the school, or log onto PPS's website (www.pps.k12.or.us) and click on the tab "Growing Great Schools Boundary Review". You can find side-by-side comparisons of scenarios, detailed maps, and a video of how PPS got to this point and where they are headed.

There are also many Facebook groups formed to discuss the issues surrounding these changes.