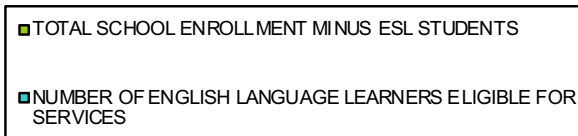


## ESL PROGRAM

|  |        |
|--|--------|
| TOTAL SCHOOL ENROLLMENT*                                   | 49,550 |
| TOTAL SCHOOL ENROLLMENT MINUS ESL STUDENTS                 | 45,952 |
| NUMBER OF ENGLISH LANGUAGE LEARNERS ELIGIBLE FOR SERVICES  | 3,598  |
| NUMBER OF STUDENTS WITH A HOME LANGUAGE OTHER THAN ENGLISH | 9,311  |
| PERCENTAGE OF STUDENTS IN ESL PROGRAM                      | 7.3%   |

**Percentage of English Language Learners at PPS**



### TOP 10 LANGUAGES

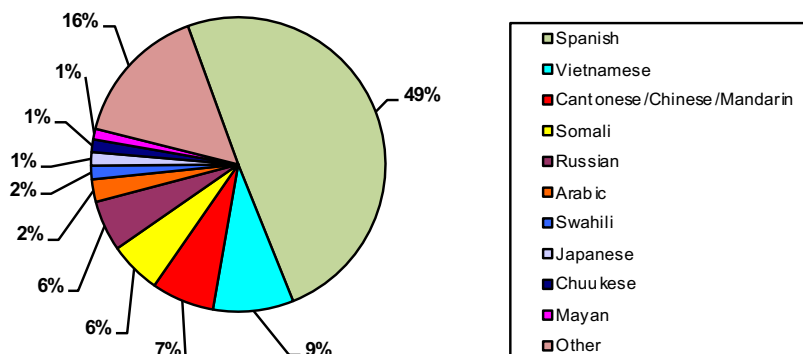
|                            |             |
|----------------------------|-------------|
| Spanish                    | 1780        |
| Vietnamese                 | 318         |
| Cantonese/Chinese/Mandarin | 248         |
| Somali                     | 205         |
| Russian                    | 200         |
| Arabic                     | 89          |
| Swahili                    | 54          |
| Japanese                   | 53          |
| Chuukese                   | 50          |
| Mayan                      | 42          |
| Other                      | 559         |
| <b>TOTAL</b>               | <b>3598</b> |

\* Numbers include PK and alternative ed programs.

### OTHER LANGUAGES

Akan, Amharic, Bengali, Burmese, Cambodian, Chamorro, Creole, Czech, Danish, Dutch, English, Ewe, Farsi, Fijian, Filipino, French, German, Guatemalan, Haitian Creole, Hebrew, Hindi, Hmong, Igbo, Indonesian, Italian, Kannada, Karen, Khmer, Kinyarwanda, Kirundi, Korean, Kurdish, Lao, Lingala, Maay-Maay, Mien, Moldavian, Nepali, Oromo, Other, Palauan, Panjabi, Pashto, Persian, Pohnpeian, Polish, Portuguese, Rohingya, Romanian, Samoan, Serbian, Sri Lankan, Swedish, Tagalog, Telugu, Thai, Tibetan, Tigrinya, Tonga, Turkish, Twi, Ukrainian, and Urdu.

### Languages Spoken



Students designated ESL ever - 6977

Eligible - 3598

Monitored (4years) -1753

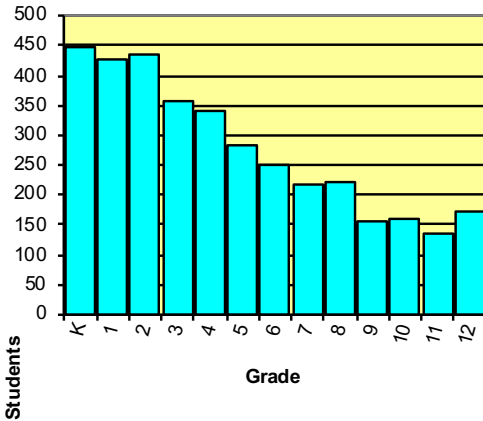
Exited not monitored -1626

Data Based on October 2018 Numbers

# PPS District

## ESL PROGRAM

Number of students per grade level



### GRADE LEVELS

| K   | 1   | 2   | 3   | 4   | 5   | 6   | 7   | 8   | 9   | 10  | 11  | 12  |
|-----|-----|-----|-----|-----|-----|-----|-----|-----|-----|-----|-----|-----|
| 446 | 425 | 433 | 358 | 342 | 285 | 249 | 216 | 220 | 157 | 159 | 136 | 172 |

Exited during last year - 478

Number of students that refused services - 158

Number of students that are also Sped - 802

Number of students that are also TAG - 21\*

Number of exited students that are TAG - 309\*

Number of students with 504s - 24

Number of ELs who are in McKinney-Vento Program - 57

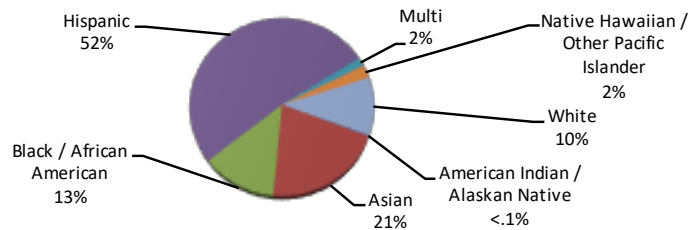
Number in Indian Ed - 1

Number in Migrant Ed - 105

Number of ELs who are SIFE - 49

Number of students in an immersion program - 1118

| Race                                     | Count |
|--|-------|
| American Indian / Alaskan Native         | 7     |
| Asian                                    | 746   |
| Black / African American                 | 462   |
| Hispanic                                 | 1862  |
| Multi                                    | 57    |
| Native Hawaiian / Other Pacific Islander | 85    |
| White                                    | 379   |



| ELPA LEVELS            | Emerging | Progressing |
|------------------------|----------|-------------|
| Percent of Grades K-5  | 28 %     | 72 %        |
| Percent of Grades 6-8  | 18 %     | 82 %        |
| Percent of Grades 9-12 | 37 %     | 63 %        |
| Percent of All Grades  | 28 %     | 72 %        |

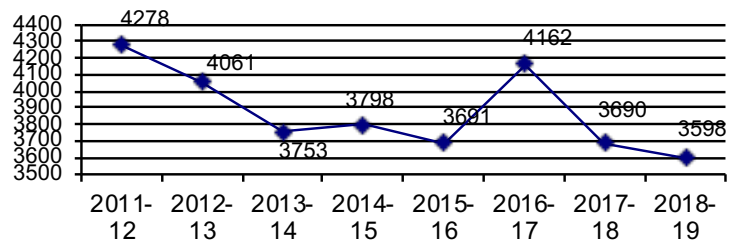
| Students on monitoring status | Yr 1 -478 | Yr 2 -813 | Yr 3 -63 | Yr 4 -399 |
|-------------------------------|-----------|-----------|----------|-----------|
|                               |           |           |          |           |

### HISTORICAL INFORMATION

The total number of students in the ESL/Bilingual Program

|         |      |
|---------|------|
| 2011-12 | 4278 |
| 2012-13 | 4061 |
| 2013-14 | 3753 |
| 2014-15 | 3798 |
| 2015-16 | 3691 |
| 2016-17 | 4162 |
| 2017-18 | 3690 |
| 2018-19 | 3598 |

### Total number of students in the ESL program



Because of ODE delay in releasing ELPA scores in 2015-16, around 500 students were not exited the previous year. 4162 included students that were exited Winter 2017,

\* May include TAG Potential

**COUNTRIES OF RECENT ARRIVERS 2017-18**

| Country                              | N  |
|--------------------------------------|----|
| Afghanistan                          | 8  |
| Algeria                              | 1  |
| Argentina, Republic of               | 3  |
| Australia, Commonwealth of           | 11 |
| Bangladesh, People's Republic of     | 3  |
| Barbados                             | 1  |
| Belgium                              | 1  |
| Belize                               | 1  |
| Brazil, Federative Republic of       | 12 |
| Bulgaria, People's Republic of       | 2  |
| Canada                               | 21 |
| Chile                                | 3  |
| China, People's Republic of          | 91 |
| Colombia, Republic of                | 6  |
| Congo, Democratic Republic of the    | 3  |
| Congo, People's Republic of          | 4  |
| Cuba, Republic of                    | 6  |
| Czech Republic                       | 2  |
| Denmark, Kingdom of                  | 7  |
| Dominica, Commonwealth of            | 1  |
| Ecuador                              | 1  |
| Egypt                                | 1  |
| El Salvador, Republic of             | 9  |
| Eritrea                              | 3  |
| Ethiopia                             | 35 |
| Fiji                                 | 1  |
| Finland, Republic of                 | 2  |
| France, French Republic              | 10 |
| Germany                              | 14 |
| Ghana, Republic of                   | 2  |
| Great Britain                        | 2  |
| Guatemala, Republic of               | 67 |
| Guinea-Bissau, Republic of           | 1  |
| Haiti, Republic of                   | 4  |
| Honduras, Republic of                | 5  |
| Hong Kong                            | 1  |
| Hungary, Hungarian People's Republic | 4  |
| India, Republic of                   | 12 |
| Indonesia, Republic of               | 2  |
| Iran, Islamic Republic of            | 2  |
| Iraq, Republic of                    | 11 |
| Ireland, Republic of                 | 1  |
| Israel, State of                     | 9  |
| Italy, Italian Republic              | 12 |
| Jamaica                              | 3  |
| Japan                                | 35 |
| Jordan, Hashemite Kingdom of         | 1  |
| Kazakhstan                           | 1  |
| Kenya, Republic of                   | 14 |
| Korea, Democratic People's Republic  | 8  |
| Korea, Republic of                   | 6  |
| Kuwait, State of                     | 3  |
| Lebanon, Republic of                 | 1  |

| Country                             | N  |
|-------------------------------------|----|
| Libyan Arab Jamahiriya              | 5  |
| Lithuania                           | 1  |
| Malaysia                            | 2  |
| Mexico                              | 32 |
| Micronesia, Federated States of     | 4  |
| Moldova, Republic of                | 2  |
| Myanmar                             | 1  |
| Namibia                             | 2  |
| Netherlands, Kingdom of the         | 14 |
| New Zealand                         | 3  |
| Nicaragua, Republic of              | 1  |
| Northern Mariana Islands            | 1  |
| Nicaragua, Republic of              | 1  |
| Norway, Kingdom of                  | 1  |
| Palau                               | 1  |
| Panama, Republic of                 | 2  |
| Paraguay, Republic of               | 1  |
| Peru                                | 1  |
| Philippines, Republic of the        | 13 |
| Poland, People's Republic of        | 1  |
| Portugal, Republic of               | 1  |
| Romania, Socialist Republic of      | 2  |
| Russia, Federation of               | 2  |
| Rwanda, Republic of                 | 7  |
| Samoa, Independent State of Western | 1  |
| Saudi Arabia, Kingdom of            | 5  |
| Sierra Leon, Republic of            | 1  |
| Singapore, Republic of              | 3  |
| Slovakia, Republic of               | 1  |
| Somalia, Democratic Republic of     | 12 |
| South Africa, Republic of           | 1  |
| Spain                               | 12 |
| Sweden, Kingdom of                  | 7  |
| Switzerland, Confederation of       | 3  |
| Syrian Arab Republic                | 2  |
| Taiwan, Province of China           | 5  |
| Tanzania, United Republic of        | 12 |
| Thailand, Kingdom of                | 9  |
| Tonga, Kingdom of                   | 3  |
| Turkey, Republic of                 | 5  |
| Turks and Caicos Island             | 1  |
| Uganda, Republic of                 | 10 |
| Ukraine                             | 4  |
| United Arab Emirates                | 1  |
| United Kingdom                      | 14 |
| unknown or unspecified country      | 85 |
| Viet Nam, Socialist Republic of     | 63 |
| Yemen                               | 2  |
| Zambia, Republic of                 | 4  |

Recent arrivers are not necessarily EB students. These are countries from when students have recently arrived.

Where are our students from:

