

Portland Public Schools Enrollment Summaries, October 2004

Table of Contents

Introduction

Historical Enrollment

Enrollment by Program Type, School and Year, 1995 through 2004

Recent Enrollment Trends

October 2004

Enrollment by Program Type, School and Grade Levels

Enrollment by Program Type, School and Grade

Enrollment by Program Type, School and Ethnicity

Enrollment by Program Type, School and Gender

Introduction

This summary report is a profile of current and historical enrollments for Portland Public Schools. Included herein are various summaries of these data, *e.g.*, by building, grade level¹, ethnicity, and gender.

Enrollment counts are compiled on or about the first of October. An enrolled student is defined as a student who attends one or more schools or programs within the District. Regardless of the number of schools or programs attended, each student is counted only once; the counts are unduplicated.

These are interim summaries pending the publication of the entire October 2004 *Enrollment Report*.

¹ The grade level category 'UN' represents ungraded, unassigned or unclassified students, *e.g.*, special education students who attend special education classes in separate classrooms.

PORTLAND PUBLIC SCHOOLS

Enrollment Summary: by Program Type, School and Year

Program Type		Year										
		ODE#	School	1995-96	1996-97	1997-98	1998-99	1999-00	2000-01	2001-02	2002-03	2003-04
IA. REGULAR SCHOOLS & PROGRAMS												
822	Abernethy		213	208	202	209	185	198	204	213	199	203
823	Ainsworth		521	523	530	547	565	552	549	557	522	499
824	Alameda		705	671	696	685	652	641	622	648	631	630
825	Applegate		265	269	269	252	242	203	212	209	198	138
826	Arleta		469	470	438	407	387	369	352	339	330	332
827	Astor		384	393	380	354	349	352	337	311	283	287
828	Atkinson		437	453	521	533	545	566	543	536	537	553
829	Ball		338	332	299	350	333	318	309	312	226	228
830	Beach		796	766	722	718	637	553	504	468	411	419
833	Boise-Eliot		740	684	696	676	696	685	672	647	584	523
834	Bridger		254	276	261	284	301	284	309	431	378	387
835	Bridlemile		579	506	491	490	475	477	449	436	460	450
836	Brooklyn		237	240	211	187	139	156	140	121		
837	Buckman		508	541	525	547	563	536	530	534	526	529
838	Capitol Hill		370	339	325	331	305	285	310	308	282	255
839	Chapman		557	581	547	550	558	513	527	484	449	414
840	Chief Joseph		375	350	373	362	326	320	298	287	266	234
841	Clarendon		431	445	439	455	456	417	393	416	338	339
842	Clark		539	574	553	545	537	531	532	556	515	499
843	Creston		402	406	378	380	398	361	353	327	301	246
844	Duniway		476	486	446	430	416	419	431	432	453	443
845	Edwards		237	228	228	216	201	218	212	202	189	199
847	Faubion		366	360	350	318	319	334	302	299	272	269
2413	Forest Park					184	226	284	334	377	407	456
850	Glencoe		492	501	468	451	453	430	449	424	430	442
854	Grout		454	443	393	364	354	323	295	248	314	320
855	Hayhurst		379	379	360	294	288	259	271	259	212	353
857	Hollyrood		184	208	197	213	186	196	191	208	225	211
860	Humboldt		464	467	416	405	343	325	326	283	257	255
861	Irvington		589	560	576	562	501	511	510	506	491	473
862	James John		606	641	643	625	618	592	564	551	514	481
864	Kelly		536	553	578	585	554	526	481	491	491	478
865	Kenton		301	289	245	240	250	249	233	252	225	166
866	King		774	789	793	760	732	733	710	583	544	525
868	Laurelhurst		548	550	557	536	512	526	526	561	561	558
869	Lee		403	381	422	402	391	409	408	419	387	333
870	Lent		363	341	376	390	397	401	400	383	335	355
871	Lewis		271	263	281	270	263	292	294	294	289	271
872	Llewellyn		387	367	360	362	330	336	311	315	302	298
873	Maplewood		342	320	290	304	295	305	309	279	288	285
1278	Markham		413	354	336	395	393	370	358	333	330	301
875	Marysville		400	436	397	416	397	400	395	394	367	349
876	Meek		290	247	249	260	242	198	198	219		
879	Peninsula		302	321	301	293	331	323	328	333	293	271
883	Richmond		562	544	521	508	490	477	470	443	415	393
1299	Rieke		300	290	281	284	278	288	307	266	276	266
884	Rigler		569	568	576	544	506	525	492	474	489	466
885	Rose City Park		598	592	551	529	510	467	470	489	446	433
886	Sabin		585	579	543	460	415	394	370	292	393	413
887	Scott		533	561	581	539	520	492	512	457	442	377
889	Sitton		439	449	417	423	404	436	421	371	359	338
890	Skyline		281	283	311	225	221	203	209	201	214	197
891	Smith		260	273	285	254	239	234	252	251	238	219

PORTLAND PUBLIC SCHOOLS

Enrollment Summary: by Program Type, School and Year

Program Type		Year									
		1995-96	1996-97	1997-98	1998-99	1999-00	2000-01	2001-02	2002-03	2003-04	2004-05
ODE#	School										
892	Stephenson	431	431	396	406	385	369	393	353	352	348
893	Sunnyside	353	341	331	313	319	325	334	276	203	459
895	Vernon	560	540	560	548	521	502	445	405	445	386
896	Vestal	320	310	284	258	243	241	227	367	344	322
900	Whitman	438	475	432	413	417	453	475	433	431	421
901	Wilcox	212	188	188	173	185	195	197			
902	Woodlawn	518	519	538	582	517	547	518	460	443	409
903	Woodmere	456	460	485	491	488	474	503	490	477	458
904	Woodstock	393	367	354	320	322	337	372	364	345	343
905	Youngson	222	222	220	187	197	185	177			
Subtotal Elementary Schools		26,727	26,503	25,972	25,594	24,818	24,420	24,125	23,177	21,924	21,505
831	Beaumont	708	711	710	670	629	631	670	610	577	542
832	Binnsmead	795	709	709	646	647	699	735	769	687	687
848	Fernwood	660	600	567	556	591	575	608	632	644	582
849	George	572	588	561	571	555	549	558	546	467	473
852	Gray	532	489	537	523	507	508	526	533	497	520
853	Gregory Heights	839	832	781	769	781	812	821	740	718	630
858	Hosford	614	515	482	434	431	426	374	386	377	405
1277	Jackson	785	795	770	842	808	796	807	823	768	773
863	Kellogg	777	743	667	635	645	645	667	671	633	591
1243	Lane	749	726	770	658	657	678	696	652	638	592
877	Mt. Tabor	685	696	732	678	672	670	700	707	729	696
878	Ockley Green	733	661	587	519	486	408	490	475	427	385
881	Portsmouth	506	494	459	460	403	434	489	522	466	460
888	Sellwood	631	601	567	542	533	584	602	619	593	603
894	Tubman	533	581	518	508	565	541	517	463	373	294
898	West Sylvan	886	872	876	881	878	907	915	947	897	884
899	Whitaker	878	861	764	705	703	675	482	441	357	289
Subtotal Middle Schools		11,883	11,474	11,057	10,597	10,491	10,538	10,657	10,536	9,848	9,406
906	Benson	1,457	1,457	1,455	1,457	1,486	1,475	1,479	1,501	1,498	1,501
909	Cleveland	1,218	1,237	1,232	1,255	1,242	1,322	1,366	1,381	1,388	1,332
911	Franklin	1,624	1,580	1,564	1,547	1,464	1,488	1,470	1,460	1,528	1,547
912	Grant	1,521	1,692	1,767	1,907	1,912	1,794	1,798	1,848	1,835	1,848
913	Jefferson Campus	1,068	955	985	916	842	892	855	826	702	661
4160	School of Champions										347
4161	School of Pride										314
914	Lincoln	1,342	1,362	1,338	1,357	1,304	1,374	1,469	1,429	1,483	1,444
915	Madison	1,312	1,300	1,243	1,239	1,236	1,241	1,204	1,261	1,194	1,063
917	Marshall Campus	1,263	1,284	1,277	1,348	1,332	1,278	1,222	1,102	949	906
4153	BizTech High										217
4154	Linus Pauling Academy										200
2175	Marshall Night School										98
4155	PDX Academy of International Studies										198
4156	Renaissance Arts Academy										193
918	Roosevelt Campus	1,286	1,324	1,205	1,118	1,155	1,131	1,141	989	825	850
4162	A.C.T. School										303
4165	P.O.W.E.R. School										261
4164	Spanish-English International										240
4163	Two Rivers Community School										46
922	Wilson	1,390	1,450	1,503	1,514	1,576	1,614	1,644	1,630	1,580	1,531
Subtotal High Schools		13,481	13,641	13,569	13,658	13,549	13,609	13,648	13,427	12,982	12,683
Subtotal Regular Schools & Programs		52,091	51,618	50,598	49,849	48,858	48,567	48,430	47,140	44,754	43,594

PORTLAND PUBLIC SCHOOLS

Enrollment Summary: by Program Type, School and Year

Program Type		Year									
		1995-96	1996-97	1997-98	1998-99	1999-00	2000-01	2001-02	2002-03	2003-04	2004-05
ODE#	School										
IB. FOCUS / ALTERNATIVE PROGRAMS											
4054	Access										see Sabin
1361	Adventure School (at Markham)		90	85							
1891	Counteract Returning	15	5								
1363	da Vinci		140	221	312	318	316	319	320	327	350
2749	E.S.L. Assessment Center	44	55	53	40		17	32	9		
1808	E.S.L. Newcomer Site 2	41									
1362	Environmental Middle School	133	179	190	182	185	190	218	225	233	
2412	Green Thumb										
2724	Head Start Early Childhood Education	568	580	569	574	566	606	527	620	539	528
	Hispanic Program (at Madison)		14								
	Home Repair										
916	Metropolitan Learning Center	456	461	490	426	426	419	418	420	432	439
910	Monroe Program	82	63	63	46	48	41	34	20		
4227	Native Montessori Program										23
1332	Northeast Community School	92	93	98	57						
	P.A.X.	1	10								
1817	P.I.V.O.T.	20	22	27	19	13	2	12	15		
3167	Portland Evening H.S. at Benson		58	24						10	20
1818	Portland Night H.S. at Grant	108	118	113	99	90	83	82	100	98	76
	Roosevelt Evening			63							
2402	Turnaround			82	44	49	42				
920	Vocational Village	201	201	190	198	205	192	160	188	158	146
1364	Winterhaven (at Brooklyn)		99	139	143	165	159	169	167	254	296
Subtotal Focus / Alternative Programs		1,761	2,188	2,407	2,140	2,065	2,067	1,971	2,084	2,051	1,878
Subtotal Regular & Focus Programs		53,852	53,806	53,005	51,989	50,923	50,634	50,401	49,224	46,805	45,472
II. COMMUNITY-BASED PROGRAMS											
1811	Albina Youth Opportunity School	71	57	54	69	41	49	29	41	50	43
1810	Christian Women Against Crime		12	20	26						
1628	DePaul Center	18	21	19	27	21	24	23	21	18	18
2410	Genesis	41	37	32	27	28	27				
1636	Greenhouse Alternative	24	48	75	51	45	31				
1298	Helensview		35		20		27	23	19		
2409	LISTOS			30	71	108	102	94	64	62	57
2753	McCoy Academy	91	146	122	86						
2754	McCoy East				7						
2755	McCoy Middle School				10						
2756	McCoy Southeast				23						
2757	McCoy Teen Parent				12						
1803	Mt. Scott Park Center for Learning		28	37	29	35	31	30	39	31	21
8002	Mt. Scott Park Center for Learning H.S.								59	58	62
3012	New Avenues for Youth				15	48	36	35	36	48	20
3151	Open Meadow / CRUE					19	20	26	27	32	44
1821	Open Meadow H.S.	104	115	100	98	95	91	86	98	102	81
3021	Open Meadow M.S.				53	58	61	38	37	54	49
1802	Operation Easy		22	7							
1865	Outfront House	5	8	8	8		6	9			
2761	P.C.C. Bilingual	154	274	206	206	248	129	184	205	187	181
2762	P.C.C. G.E.D.	134	146	191	212	234	120	110	93	127	91
2763	P.C.C. H.S. Completion		30	109	132	171	181	178	213	154	168
2764	P.C.C. Middle College				54	73	2				
2752	P.I.C. Night School				27	36	18	21	16		8

PORTLAND PUBLIC SCHOOLS

Enrollment Summary: by Program Type, School and Year

Program Type		Year									
		1995-96	1996-97	1997-98	1998-99	1999-00	2000-01	2001-02	2002-03	2003-04	2004-05
ODE#	School										
1816	P.O.I.C.	97	118	73	90	129	139	124	114	102	108
1658	Pacific Crest Community School							5	10	8	13
3496	Pathfinders Academy					13	15	10	16	12	10
1815	Portland International Community	38	73	50	53	35	39	39	33	33	23
1822	Portland Street Academy	49	99	76	50	46	52	42	33		
1820	Quest Schools	103	106	94	88	97	87	78	74	73	77
1872	Springdale Job Corp				4						
4084	Village Home Education Resource Center										
2774	Y.E.I. Teen Parent				43	31	37	33	33	41	26
	Y.W.C.A. Homeless/Transitional	53	45	35							
1875	Youth Employment Institute	38	99	98	29	46	26	52	52	56	27
1835	Youth Progress Association	16	47	20	19	24	39	10	20	22	19
1885	YouthBuilders		3	10	34	25	27	18	28		25
Subtotal Community-based Programs		1,036	1,569	1,466	1,673	1,706	1,416	1,297	1,381	1,270	1,171
III. SPECIAL EDUCATION PROGRAMS											
2747	Autism Services	416	538	299	377	467	564	628	631		
3508	C.R.C. Transitional Classrooms								29	37	
1812	C.T.C. Jefferson H.S.	12	9	7	9	14	15	20	18	15	16
1813	C.T.C. P.S.U.	14	15	13	14	11	12	14	11	13	19
1814	C.T.C. Southeast	18	11	8	12	13	16	14	9	15	58
1653	Children's Psychiatric Day Treatment		2	2			2				
908	Clinton Street School	30	24	24	24	33	28	18	37	39	37
1801	Columbia Transitional School			7	4	7	6	7	37		
2748	Deaf/Hard of Hearing Services	331	325	179	182	174	171	172	170		
8004	E.S. B Program at Youngson								22	28	
1631	Eastside Education Center	12	22	19	22	26	24	12			
944	Edgefield Center	4	5	1							
1800	Emanuel Hospital			1		1		2			
2776	Gately Day Treatment	8	7	8	7	6	10	7	4		
3506	H.S. B Program at Columbia							31	18	52	134
3450	Holladay Center	42	11	8	11	3	18	13			
2751	Home Instruction	27	17	16	40	30	26			3	1
907	John's Landing School	36	35	31	31	25	12	21	22	11	23
1645	Lents Education Center	17	11	13	8	10	8	8	3		
3491	M.E.S.D. Functional Living Skills	85	106	109	94	49	86	74	54		
8003	M.S. B Program at Foster								18	37	
1804	Marquis (formerly P.A.C.C.)	7	7	5	5	3	1				
2275	Morrison Breakthrough	12	12	28	11	10	18	17	21	18	18
1648	Morrison Counterpoint	2	6		1	9					
1279	Morrison Hand in Hand	19	22	20	16	20	14	20	19	19	22
2153	Multnomah Elementary/Middle School	15	14	23	28	24	38	52			
1281	Nickerson Adolescent D.T.	14	13	12	12	11	18	13	10	16	13
1280	Nickerson Early Childhood Education	9	8	10	9	9		9	9		
3072	Northwest Academy						1				
1807	Oregon Health Sciences University	1		5							
1831	Oregon School for the Blind	5	6	3	4	3	3	1	1		
1832	Oregon School for the Deaf	7	9	10	8	9	6	1	1		
1819	Oregon State Hospital - Portland			4	3		4	2			
2760	Orthopedic Services	266	301	171	170	169	183	171	158		
880	Parry Center	44	43	42	42	44	32	23	42	43	39
2765	Part-time Home/Private	41	65	66	36	24	57	55	10	14	70
2343	Portland Early Intervention Program	350	451	548	566	508	520	563	519		
2766	Private/Alternative Special Ed. Sites	3			1						

PORTLAND PUBLIC SCHOOLS

Enrollment Summary: by Program Type, School and Year

Program Type		Year									
		1995-96	1996-97	1997-98	1998-99	1999-00	2000-01	2001-02	2002-03	2003-04	2004-05
ODE#	School										
1805	Providence Hospital	51	46	44	42	33	31	26	23	14	17
1316	Riverbend				1			1			
923	Rosemont	42	50	41	47	44	66	53	51	50	52
1871	S.E.R.P.		6	6	8	16	20	9	2		
1671	Serendipity	107	105	93	85	84	84	56	31		
1806	Shriners Hospital			4	1						
2769	Special Education Out-of-State	1		1	1						
	Special Education Transition	2	2						2		
1751	Thomas Edison H.S.	7	5	7	7	9		12	9		
2743	Tualatin Valley Day Treatment					1	1	4	3		
2771	Vision Services	234	240	122	140	135	132	136	132		
2772	Vocational Education Only		1	7	5		9	4		1	
897	Waverly Children's Home	44	45	43	27	28	39	32	18	9	18
921	White Shield	36	39	31	37	35	19	23	26	28	24
1689	Woodmont	5	13	20	18	16	14	5			1
2773	Wynne Watts Day Treatment	2		1	3	4	3	1			
Subtotal Special Education Programs		2,378	2,647	2,112	2,169	2,117	2,311	2,330	2,170	462	562
IV. PUBLIC CHARTER PROGRAMS											
3451	CM2's Opal School							25	42	50	71
3991	Emerson Public Charter									98	97
4215	Garden Laboratory Charter School										35
3244	McCoy Public Charter						66	97			
4212	Self Enhancement Academy										49
3616	Trillium Public Charter								152	198	199
Subtotal Public Charter Programs		0	0	0	0	0	66	122	194	346	451
Summary		57,266	58,022	56,583	55,831	54,746	54,427	54,150	52,969	48,883	47,656

Program type reflects most recent administrative assignment. In recent years enrollment counts are compiled on or about the first of October. An enrolled student is defined as a student who attends one or more schools or programs within the District. Regardless of the number of schools or programs attended, each student is counted only once; the counts are unduplicated.

The Environmental Middle School combined with Sunnyside Elementary and is now called Sunnyside Environmental School. The Odyssey program and its students (formerly at Chapman Elementary) are now part of Hayhurst Elementary. The Family Cooperative program (formerly at Sunnyside) is now part of Bridger Elementary.

As of the 2003-04 school year, enrollment summaries no longer include the following programs: Hospital Programs (Emanuel, Oregon Health Science University, Oregon State and Shriners Hospitals); M.E.S.D. Functional Living Skills; Portland Early Intervention Program (PeiP) and Columbia Regional Programs (Autism, Deaf and Hard of Hearing, Orthopedic and Vision Services). Administration of the Hospital Programs, Functional Living Skills and PeiP was transferred to Multnomah Education Service District (M.E.S.D.). Historically, enrollments reported for Columbia Regional Programs represent non-District students served by PPS staff on a part-time basis. For purposes of State reporting, membership (i.e., enrollment) for Columbia Regional Program students is reported by the resident District.

Brooklyn and Meek Elementary Schools were closed at the end of the 2002-03 school year. Most students residing in the Brooklyn neighborhood area went on to attend Grout Elementary, while those residing in the Meek neighborhood area attended Vernon Elementary. Similarly, Wilcox and Youngson Elementary Schools were closed at the end of the 2001-02 school year. Most students residing in the Wilcox neighborhood area went on to attend Vestal Elementary, while those residing in the Youngson neighborhood area attended Bridger Elementary.

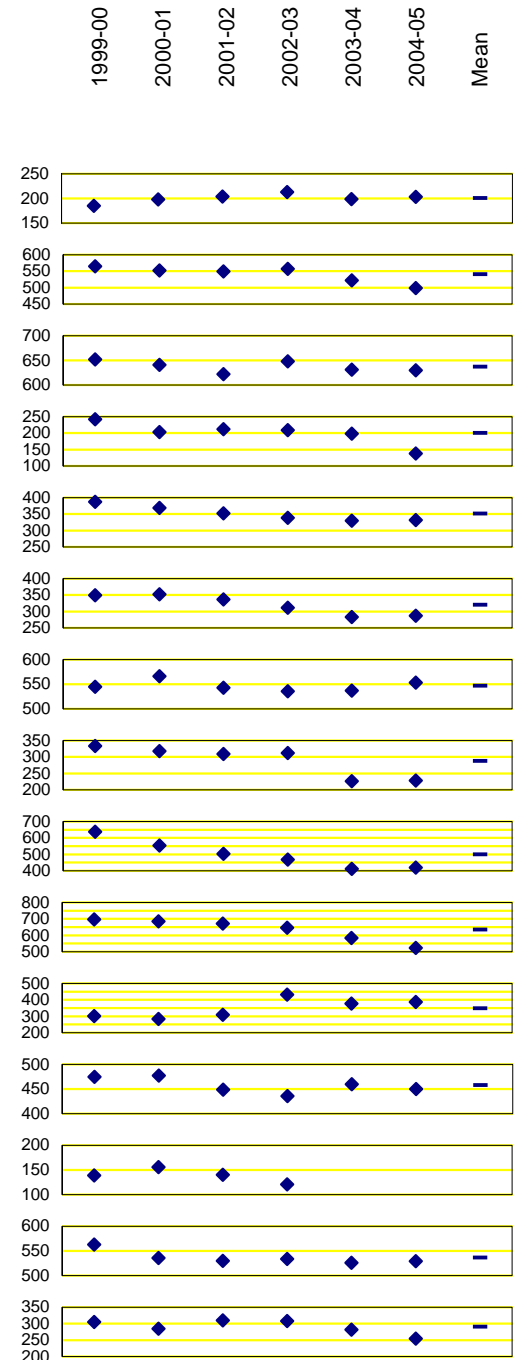
PORTLAND PUBLIC SCHOOLS

Enrollment Trends, 1995-96 through 2004-05

by Program Type, School and Year (Grades PK through 12)

Program Type		Year						Enrollment Trends			
		1999-00	2000-01	2001-02	2002-03	2003-04	2004-05	Mean	St. Dev	1-Year Change	
ODE#	School									#	%
IA. REGULAR SCHOOLS & PROGRAMS											
822	Abernethy	185	198	204	213	199	203	200	9.2	4	2.0
823	Ainsworth	565	552	549	557	522	499	541	25.1	-23	-4.4
824	Alameda	652	641	622	648	631	630	637	11.6	-1	-0.2
825	Applegate	242	203	212	209	198	138	200	34.2	-60	-30.3
826	Arleta	387	369	352	339	330	332	352	22.7	2	0.6
827	Astor	349	352	337	311	283	287	320	30.6	4	1.4
828	Atkinson	545	566	543	536	537	553	547	11.3	16	3.0
829	Ball	333	318	309	312	226	228	288	47.7	2	0.9
830	Beach	637	553	504	468	411	419	499	86.1	8	1.9
833	Boise-Eliot	696	685	672	647	584	523	635	67.6	-61	-10.4
834	Bridger	301	284	309	431	378	387	348	58.5	9	2.4
835	Bridlemile	475	477	449	436	460	450	458	16.0	-10	-2.2
836	Brooklyn	139	156	140	121			N/A	N/A	N/A	N/A
837	Buckman	563	536	530	534	526	529	536	13.5	3	0.6
838	Capitol Hill	305	285	310	308	282	255	291	21.3	-27	-9.6

Student Enrollment



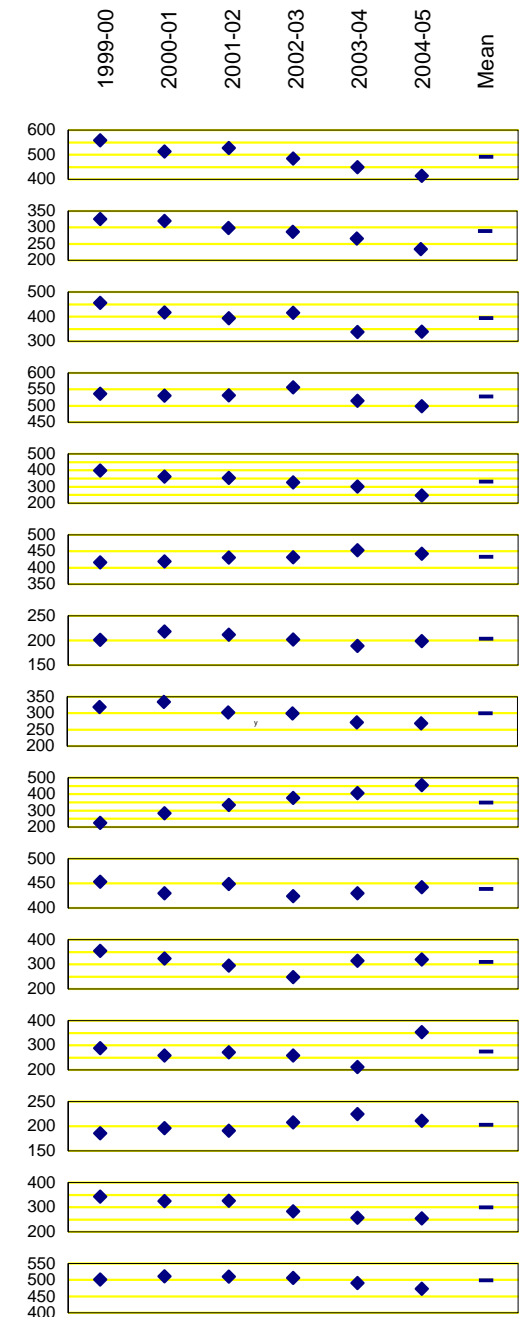
PORTLAND PUBLIC SCHOOLS

Enrollment Trends, 1995-96 through 2004-05

by Program Type, School and Year (Grades PK through 12)

Program Type		Year						Enrollment Trends			
		1999-00	2000-01	2001-02	2002-03	2003-04	2004-05	Mean	St. Dev	1-Year Change	
ODE#	School									#	%
839	Chapman	558	513	527	484	449	414	491	52.9	-35	-7.8
840	Chief Joseph	326	320	298	287	266	234	289	34.5	-32	-12.0
841	Clarendon	456	417	393	416	338	339	393	46.9	1	0.3
842	Clark	537	531	532	556	515	499	528	19.5	-16	-3.1
843	Creston	398	361	353	327	301	246	331	52.9	-55	-18.3
844	Duniway	416	419	431	432	453	443	432	14.1	-10	-2.2
845	Edwards	201	218	212	202	189	199	204	10.2	10	5.3
847	Faubion	319	334	302	299	272	269	299	25.5	-3	-1.1
2413	Forest Park	226	284	334	377	407	456	347	83.9	49	12.0
850	Glencoe	453	430	449	424	430	442	438	11.7	12	2.8
854	Grout	354	323	295	248	314	320	309	35.5	6	1.9
855	Hayhurst	288	259	271	259	212	353	274	46.3	141	66.5
857	Hollyrood	186	196	191	208	225	211	203	14.5	-14	-6.2
860	Humboldt	343	325	326	283	257	255	298	38.2	-2	-0.8
861	Irvington	501	511	510	506	491	473	499	14.5	-18	-3.7

Student Enrollment



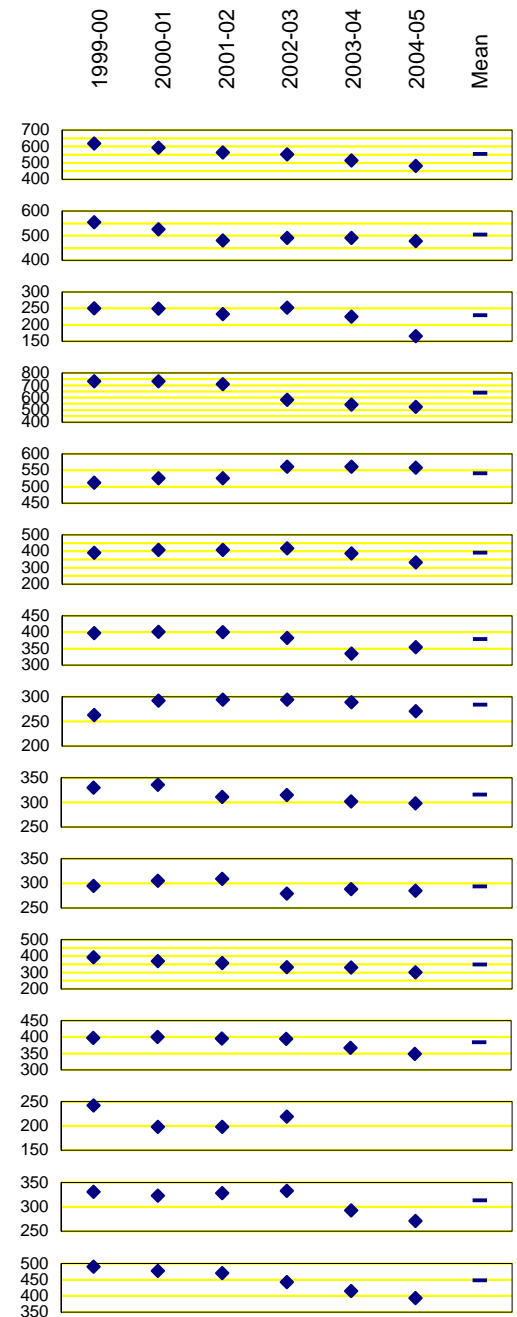
PORTLAND PUBLIC SCHOOLS

Enrollment Trends, 1995-96 through 2004-05

by Program Type, School and Year (Grades PK through 12)

Program Type		Year						Enrollment Trends			
		1999-00	2000-01	2001-02	2002-03	2003-04	2004-05	Mean	St. Dev	1-Year Change	
ODE#	School									#	%
862	James John	618	592	564	551	514	481	553	50.2	-33	-6.4
864	Kelly	554	526	481	491	491	478	504	30.1	-13	-2.6
865	Kenton	250	249	233	252	225	166	229	32.8	-59	-26.2
866	King	732	733	710	583	544	525	638	97.6	-19	-3.5
868	Laurelhurst	512	526	526	561	561	558	541	21.8	-3	-0.5
869	Lee	391	409	408	419	387	333	391	30.9	-54	-14.0
870	Lent	397	401	400	383	335	355	379	27.5	20	6.0
871	Lewis	263	292	294	294	289	271	284	13.4	-18	-6.2
872	Llewellyn	330	336	311	315	302	298	315	15.1	-4	-1.3
873	Maplewood	295	305	309	279	288	285	294	11.7	-3	-1.0
1278	Markham	393	370	358	333	330	301	348	32.8	-29	-8.8
875	Marysville	397	400	395	394	367	349	384	20.8	-18	-4.9
876	Meek	242	198	198	219			N/A	N/A	N/A	N/A
879	Peninsula	331	323	328	333	293	271	313	25.3	-22	-7.5
883	Richmond	490	477	470	443	415	393	448	38.0	-22	-5.3

Student Enrollment



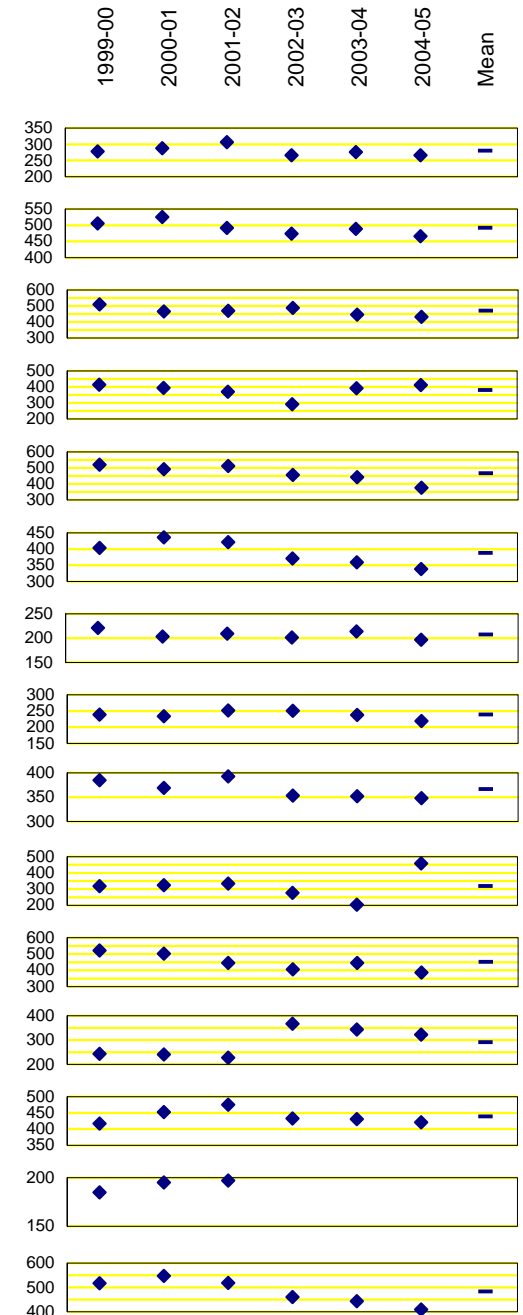
PORTLAND PUBLIC SCHOOLS

Enrollment Trends, 1995-96 through 2004-05

by Program Type, School and Year (Grades PK through 12)

Program Type		Year						Enrollment Trends			
		1999-00	2000-01	2001-02	2002-03	2003-04	2004-05	Mean	St. Dev	1-Year Change	
ODE#	School									#	%
1299	Rieke	278	288	307	266	276	266	280	15.5	-10	-3.6
884	Rigler	506	525	492	474	489	466	492	21.4	-23	-4.7
885	Rose City Park	510	467	470	489	446	433	469	28.0	-13	-2.9
886	Sabin / Access	415	394	370	292	393	413	380	45.9	20	5.1
887	Scott	520	492	512	457	442	377	467	53.4	-65	-14.7
889	Sitton	404	436	421	371	359	338	388	38.2	-21	-5.8
890	Skyline	221	203	209	201	214	197	208	8.9	-17	-7.9
891	Smith	239	234	252	251	238	219	239	12.2	-19	-8.0
892	Stephenson	385	369	393	353	352	348	367	18.9	-4	-1.1
893	Sunnyside Environmental	319	325	334	276	203	459	319	83.9	256	126.1
895	Vernon	521	502	445	405	445	386	451	52.8	-59	-13.3
896	Vestal	243	241	227	367	344	322	291	60.7	-22	-6.4
900	Whitman	417	453	475	433	431	421	438	21.9	-10	-2.3
901	Wilcox	185	195	197				N/A	N/A	N/A	N/A
902	Woodlawn	517	547	518	460	443	409	482	53.1	-34	-7.7

Student Enrollment



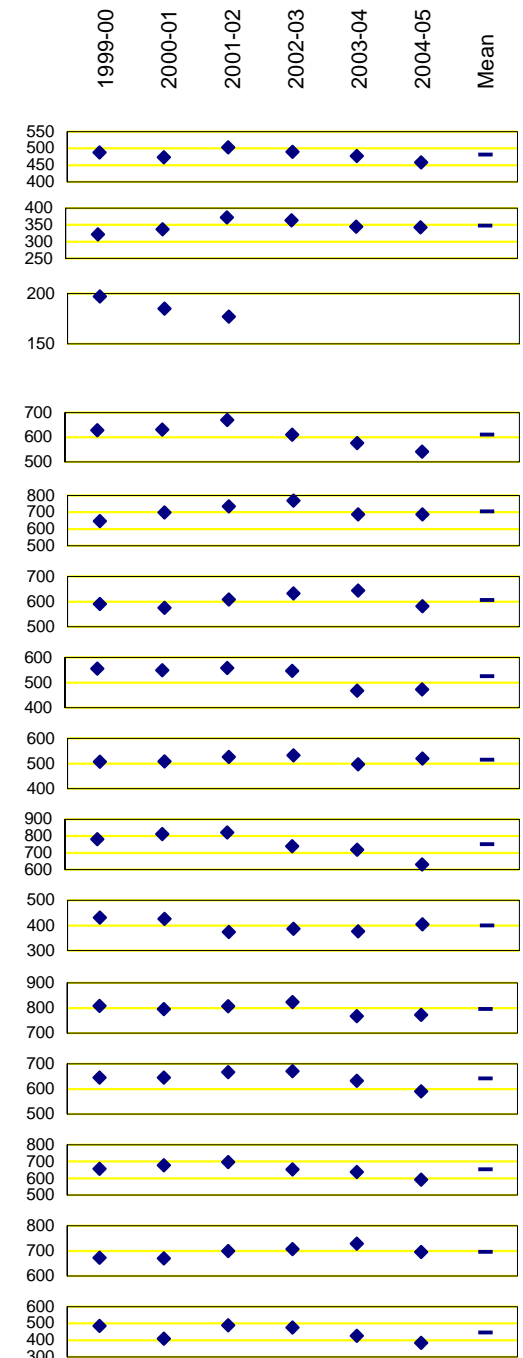
PORTLAND PUBLIC SCHOOLS

Enrollment Trends, 1995-96 through 2004-05

by Program Type, School and Year (Grades PK through 12)

Program Type		Year						Enrollment Trends			
		1999-00	2000-01	2001-02	2002-03	2003-04	2004-05	Mean	St. Dev	1-Year Change	
ODE#	School								#	%	
903	Woodmere	488	474	503	490	477	458	482	15.5	-19	-4.0
904	Woodstock	322	337	372	364	345	343	347	18.2	-2	-0.6
905	Youngson	197	185	177				N/A	N/A	N/A	N/A
Subtotal Elementary Schools		24,818	24,420	24,125	23,177	21,924	21,505	23,328	1,368.6	-419	-1.9
831	Beaumont	629	631	670	610	577	542	610	45.0	-35	-6.1
832	Binnsmead	647	699	735	769	687	687	704	42.5	0	0.0
848	Fernwood	591	575	608	632	644	582	605	27.9	-62	-9.6
849	George	555	549	558	546	467	473	525	42.6	6	1.3
852	Gray	507	508	526	533	497	520	515	13.5	23	4.6
853	Gregory Heights	781	812	821	740	718	630	750	71.2	-88	-12.3
858	Hosford	431	426	374	386	377	405	400	24.8	28	7.4
1277	Jackson	808	796	807	823	768	773	796	21.5	5	0.7
863	Kellogg	645	645	667	671	633	591	642	28.9	-42	-6.6
1243	Lane	657	678	696	652	638	592	652	35.9	-46	-7.2
877	Mt. Tabor	672	670	700	707	729	696	696	22.3	-33	-4.5
878	Ockley Green	486	408	490	475	427	385	445	44.5	-42	-9.8

Student Enrollment



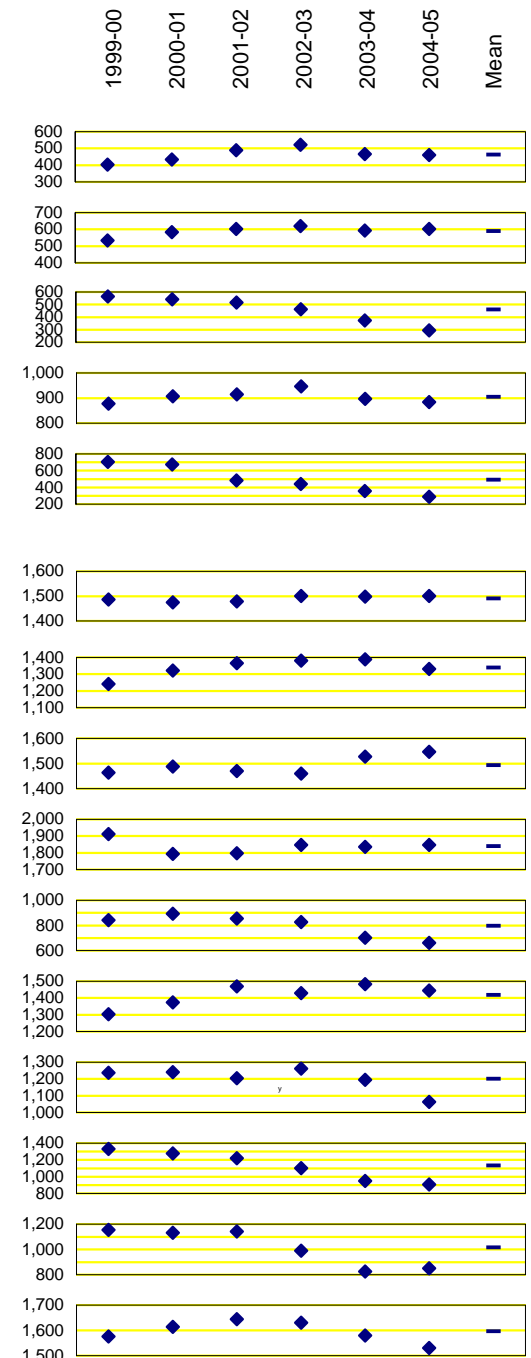
PORTLAND PUBLIC SCHOOLS

Enrollment Trends, 1995-96 through 2004-05

by Program Type, School and Year (Grades PK through 12)

Program Type		Year						Enrollment Trends			
		1999-00	2000-01	2001-02	2002-03	2003-04	2004-05	Mean	St. Dev	1-Year Change	
ODE#	School									#	%
881	Portsmouth	403	434	489	522	466	460	462	41.5	-6	-1.3
888	Sellwood	533	584	602	619	593	603	589	29.8	10	1.7
894	Tubman	565	541	517	463	373	294	459	105.8	-79	-21.2
898	West Sylvan	878	907	915	947	897	884	905	24.9	-13	-1.4
899	Whitaker	703	675	482	441	357	289	491	167.4	-68	-19.0
Subtotal Middle Schools		10,491	10,538	10,657	10,536	9,848	9,406	10,246	502.5	-442	-4.5
906	Benson	1,486	1,475	1,479	1,501	1,498	1,501	1,490	11.6	3	0.2
909	Cleveland	1,242	1,322	1,366	1,381	1,388	1,332	1,339	54.1	-56	-4.0
911	Franklin	1,464	1,488	1,470	1,460	1,528	1,547	1,493	36.4	19	1.2
912	Grant	1,912	1,794	1,798	1,848	1,835	1,848	1,839	42.9	13	0.7
913	Jefferson Campus	842	892	855	826	702	661	796	92.5	-41	-5.8
914	Lincoln	1,304	1,374	1,469	1,429	1,483	1,444	1,417	67.2	-39	-2.6
915	Madison	1,236	1,241	1,204	1,261	1,194	1,063	1,200	71.4	-131	-11.0
917	Marshall Campus	1,332	1,278	1,222	1,102	949	906	1,132	176.0	-43	-4.5
918	Roosevelt Campus	1,155	1,131	1,141	989	825	850	1,015	150.3	25	3.0
922	Wilson	1,576	1,614	1,644	1,630	1,580	1,531	1,596	41.6	-49	-3.1

Student Enrollment



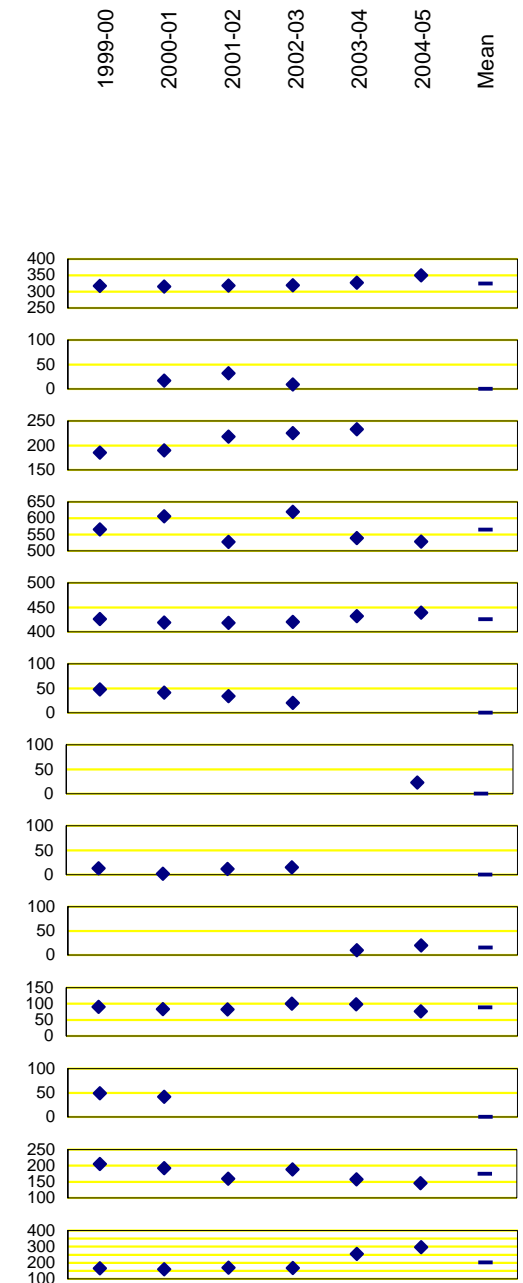
PORTLAND PUBLIC SCHOOLS

Enrollment Trends, 1995-96 through 2004-05

by Program Type, School and Year (Grades PK through 12)

Program Type		Year					Enrollment Trends				
		1999-00	2000-01	2001-02	2002-03	2003-04	2004-05	Mean	St. Dev	1-Year Change	
ODE#	School								#	%	
Subtotal High Schools		13,549	13,609	13,648	13,427	12,982	12,683	13,316	393.7	-299	-2.3
Subtotal Regular Schools & Programs		48,858	48,567	48,430	47,140	44,754	43,594	46,891	2,215.7	-1,160	-2.6
IB. FOCUS / ALTERNATIVE PROGRAMS											
1363	da Vinci	318	316	319	320	327	350	325	12.8	23	7.0
2749	E.S.L. Assessment Center		17	32	9			N/A	N/A	N/A	N/A
1362	Environmental Middle School	185	190	218	225	233		N/A	N/A	N/A	N/A
2724	Head Start Early Childhood Education	566	606	527	620	539	528	564	40.5	-11	-2.0
916	Metropolitan Learning Center	426	419	418	420	432	439	426	8.4	7	1.6
910	Monroe Program	48	41	34	20			N/A	N/A	N/A	N/A
4227	Native Montessori Program						23	N/A	N/A	N/A	N/A
1817	P.I.V.O.T.	13	2	12	15			N/A	N/A	N/A	N/A
3167	Portland Evening H.S. at Benson					10	20	15	7.1	10	100.0
1818	Portland Night H.S. at Grant	90	83	82	100	98	76	88	9.5	-22	-22.4
2402	Turnaround	49	42					N/A	N/A	N/A	N/A
920	Vocational Village	205	192	160	188	158	146	175	23.3	-12	-7.6
1364	Winterhaven (at Brooklyn)	165	159	169	167	254	296	202	58.4	42	16.5
Subtotal Focus / Alternative Programs		2,065	2,067	1,971	2,084	2,051	1,878	2,019	79.8	-173	-8.4

Student Enrollment



PORTLAND PUBLIC SCHOOLS

Enrollment Trends, 1995-96 through 2004-05

by Program Type, School and Year (Grades PK through 12)

Student Enrollment

Program Type	Year						Enrollment Trends			
	1999-00	2000-01	2001-02	2002-03	2003-04	2004-05	Mean	St. Dev	1-Year Change	
ODE# School	1999-00	2000-01	2001-02	2002-03	2003-04	2004-05	Mean	St. Dev	#	%
Subtotal Regular & Focus Programs	50,923	50,634	50,401	49,224	46,805	45,472	48,910	2,262.6	-1,333	-2.8
II. COMMUNITY-BASED PROGRAMS										
Subtotal Community-based Programs	1,706	1,416	1,297	1,381	1,270	1,171	1,374	184.4	-99	-7.8
III. SPECIAL EDUCATION PROGRAMS										
Subtotal Special Education Programs	2,117	2,311	2,330	2,170	462	562	1,659	892.5	100	21.6
IV. PUBLIC CHARTER PROGRAMS										
Subtotal Public Charter Programs	0	66	122	194	346	451	197	172.2	105	30.3
Summary	54,746	54,427	54,150	52,969	48,883	47,656	52,139	3,081.0	-1,227	-2.5

1999-00
2000-01
2001-02
2002-03
2003-04
2004-05
Mean

Program type reflects most recent administrative assignment. In recent years enrollment counts are compiled on or about the first of October. An enrolled student is defined as a student who attends one or more schools or programs within the District. Regardless of the number of schools or programs attended, each student is counted only once; the counts are unduplicated.

The Environmental Middle School combined with Sunnyside Elementary and is now called Sunnyside Environmental School. The Odyssey program and its students (formerly at Chapman Elementary) are now part of Hayhurst Elementary. The Family Cooperative program (formerly at Sunnyside) is now part of Bridger Elementary.

As of the 2003-04 school year, enrollment summaries no longer include the following programs: Hospital Programs (Emanuel, Oregon Health Science University, Oregon State and Shriners Hospitals); M.E.S.D. Functional Living Skills; Portland Early Intervention Program (PeiP) and Columbia Regional Programs (Autism, Deaf and Hard of Hearing, Orthopedic and Vision Services). Administration of the Hospital Programs, Functional Living Skills and PeiP was transferred to Multnomah Education Service District (M.E.S.D.). Historically, enrollments reported for Columbia Regional Programs represent non-District students served by PPS staff on a part-time basis. For purposes of State reporting, membership (i.e., enrollment) for Columbia Regional Program students is reported by the resident District.

Brooklyn and Meek Elementary Schools were closed at the end of the 2002-03 school year. Most students residing in the Brooklyn neighborhood area went on to attend Grout Elementary, while those residing in the Meek neighborhood area attended Vernon Elementary. Similarly, Wilcox and Youngson Elementary Schools were closed at the end of the 2001-02 school year. Most students residing in the Wilcox neighborhood area went on to attend Vestal Elementary, while those residing in the Youngson neighborhood area attended Bridger Elementary.

Enrollment counts for the 2004-05 school year are preliminary. These counts were derived from student demographic data extracted via eSIS Reports feature, Build Manual Extract.

PORTLAND PUBLIC SCHOOLS

Enrollment Summary, October 2004: by Program Type, School and Grade Levels

Program Type		Grade Levels						Total
ODE#	School	PK	KG	1-5	6-8	9-12	UN	
IA. REGULAR SCHOOLS & PROGRAMS								
822	Abernethy		34	169				203
823	Ainsworth		72	427				499
824	Alameda		92	538				630
825	Applegate		12	126				138
826	Arleta		52	280				332
827	Astor		53	234				287
828	Atkinson		116	437				553
829	Ball		46	182				228
830	Beach	37	80	302				419
833	Boise-Eliot	50	91	381			1	523
834	Bridger		71	316				387
835	Bridlemile		61	389				450
837	Buckman		96	433				529
838	Capitol Hill		46	209				255
839	Chapman		59	355				414
840	Chief Joseph		32	202				234
841	Clarendon		59	280				339
842	Clark		66	433				499
843	Creston		29	217				246
844	Duniway		57	386				443
845	Edwards		24	175				199
847	Faubion		48	221				269
2413	Forest Park		77	379				456
850	Glencoe		75	367				442
854	Grout		55	265				320
855	Hayhurst		40	265	48			353
857	Hollyrood		44	167				211
860	Humboldt	18	44	192			1	255
861	Irvington		87	386				473
862	James John		97	384				481
864	Kelly		97	381				478
865	Kenton		20	146				166
866	King	60	82	382			1	525
868	Laurelhurst		78	480				558
869	Lee		38	295				333
870	Lent		53	302				355
871	Lewis		37	234				271
872	Llewellyn		45	253				298
873	Maplewood		48	237				285
1278	Markham		53	248				301
875	Marysville		49	300				349
879	Peninsula		51	220				271
883	Richmond		64	329				393
1299	Rieke		41	225				266
884	Rigler		68	398				466
885	Rose City Park		78	355				433

PORTLAND PUBLIC SCHOOLS

Enrollment Summary, October 2004: by Program Type, School and Grade Levels

Program Type		Grade Levels						
ODE#	School	PK	KG	1-5	6-8	9-12	UN	Total
886	Sabin	40	58	268	47			413
887	Scott		75	302				377
889	Sitton		48	290				338
890	Skyline		22	175				197
891	Smith		33	186				219
892	Stephenson		51	297				348
893	Sunnyside Environmental		46	169	244			459
895	Vernon	35	61	290				386
896	Vestal		56	266				322
900	Whitman		81	340				421
902	Woodlawn	38	72	299				409
903	Woodmere		71	387				458
904	Woodstock		60	283				343
Subtotal Elementary Schools		278	3,451	17,434	339		3	21,505
831	Beaumont				542			542
832	Binnsmead				687			687
848	Fernwood				582			582
849	George				473			473
852	Gray				520			520
853	Gregory Heights				630			630
858	Hosford				405			405
1277	Jackson				773			773
863	Kellogg				591			591
1243	Lane				592			592
877	Mt. Tabor				696			696
878	Ockley Green				385			385
881	Portsmouth				460			460
888	Sellwood				603			603
894	Tubman				294			294
898	West Sylvan				884			884
899	Whitaker				289			289
Subtotal Middle Schools					9,406			9,406
906	Benson					1,501		1,501
909	Cleveland					1,332		1,332
911	Franklin					1,547		1,547
912	Grant					1,848		1,848
913	Jefferson Campus					661		661
4160	School of Champions					347		347
4161	School of Pride					314		314
914	Lincoln					1,444		1,444
915	Madison					1,063		1,063
917	Marshall Campus					906		906
4153	BizTech High					217		217
4154	Linus Pauling Academy					200		200
2175	Marshall Night School					98		98
4155	PDX Academy of International Studies					198		198
4156	Renaissance Arts Academy					193		193

PORTLAND PUBLIC SCHOOLS

Enrollment Summary, October 2004: by Program Type, School and Grade Levels

Program Type		Grade Levels						
ODE#	School	PK	KG	1-5	6-8	9-12	UN	Total
918	Roosevelt Campus					850		850
4162	A.C.T. School					303		303
4165	P.O.W.E.R. School					261		261
4164	Spanish-English International					240		240
4163	Two Rivers Community School					46		46
922	Wilson					1,531		1,531
Subtotal High Schools						12,683		12,683
Subtotal Regular Schools & Programs		278	3,451	17,434	9,745	12,683	3	43,594
IB. FOCUS / ALTERNATIVE PROGRAMS								
4054	Access							see Sabin
1363	da Vinci				350			350
1362	Environmental Middle School							see Sunnyside
2724	Head Start Early Childhood Education	528						528
916	Metropolitan Learning Center		25	123	153	138		439
4227	Native Montessori Program	14	9					23
3167	Portland Evening H.S. at Benson					20		20
1818	Portland Night H.S. at Grant					76		76
920	Vocational Village					146		146
1364	Winterhaven (at Brooklyn)		29	135	132			296
Subtotal Focus / Alternative Programs		542	63	258	635	380	0	1,878
Subtotal Regular & Focus Programs		820	3,514	17,692	10,380	13,063	3	45,472
II. COMMUNITY-BASED PROGRAMS								
1811	Albina Youth Opportunity School					43		43
1628	DePaul Center					18		18
2409	LISTOS					57		57
1803	Mt. Scott Park Center for Learning				21			21
8002	Mt. Scott Park Center for Learning H.S.					62		62
3012	New Avenues for Youth					20		20
3151	Open Meadow / CRUE					44		44
1821	Open Meadow H.S.					81		81
3021	Open Meadow M.S.				47	2		49
2761	P.C.C. Bilingual					181		181
2762	P.C.C. G.E.D.					91		91
2763	P.C.C. H.S. Completion					168		168
2752	P.I.C. Night School					8		8
1816	P.O.I.C.				5	103		108
1658	Pacific Crest Community School				1	12		13
3496	Pathfinders Academy					10		10
1815	Portland International Community					23		23
1820	Quest Schools					77		77
2774	Y.E.I. Teen Parent					26		26
1875	Youth Employment Institute					27		27
1835	Youth Progress Association					19		19
1885	YouthBuilders					25		25
Subtotal Community-based Programs		0	0	0	74	1,097	0	1,171

PORTLAND PUBLIC SCHOOLS

Enrollment Summary, October 2004: by Program Type, School and Grade Levels

Program Type		Grade Levels						
ODE#	School	PK	KG	1-5	6-8	9-12	UN	Total
III. SPECIAL EDUCATION PROGRAMS								
1812	C.T.C. Jefferson H.S.					16		16
1813	C.T.C. P.S.U.					19		19
1814	C.T.C. Southeast					58		58
908	Clinton Street School				6	31		37
3506	B Programs at Green Thumb, Foster & Youngson			21	39	74		134
2751	Home Instruction					1		1
907	John's Landing School				6	17		23
2275	Morrison Breakthrough					18		18
1279	Morrison Hand in Hand	7	9	4			2	22
1281	Nickerson Adolescent D.T.				3	10		13
880	Parry Center			24	15			39
2765	Part-time Home/Private		3	50	12	5		70
1805	Providence Hospital			6	3	8		17
923	Rosemont				5	47		52
897	Waverly Children's Home		1	15	2			18
921	White Shield				4	20		24
1689	Woodmont					1		1
Subtotal Special Education Programs		7	13	120	95	325	2	562
IV. PUBLIC CHARTER PROGRAMS								
3451	CM2's Opal School	6	11	54				71
3991	Emerson Public Charter		21	76				97
4215	Garden Laboratory Charter School		17	18				35
4212	Self Enhancement Academy				49			49
3616	Trillum Public Charter		13	85	58	43		199
Subtotal Public Charter Programs		6	62	233	107	43	0	451
Summary		833	3,589	18,045	10,656	14,528	5	47,656

Included in the column titled "UN", are unassigned or unclassified students, e.g., special education students who attend special education classes in separate classrooms.

The Environmental Middle School combined with Sunnyside Elementary and is now called Sunnyside Environmental School. The Odyssey program and its students (formerly at Chapman Elementary) are now part of Hayhurst Elementary. The Family Cooperative program (formerly at Sunnyside) is now part of Bridger Elementary.

PORTLAND PUBLIC SCHOOLS

Enrollment Summary, October 2004: by Program Type, School and Grade Level

Program Type		Grade Level															
ODE#	School	PK	KG	01	02	03	04	05	06	07	08	09	10	11	12	UN	Total
IA. REGULAR SCHOOLS & PROGRAMS																	
822	Abernethy		34	28	36	36	40	29									203
823	Ainsworth		72	73	74	97	76	107									499
824	Alameda		92	118	103	113	109	95									630
825	Applegate		12	19	25	26	33	23									138
826	Arleta		52	48	58	73	58	43									332
827	Astor		53	43	42	43	48	58									287
828	Atkinson		116	108	95	86	76	72									553
829	Ball		46	40	38	39	34	31									228
830	Beach	37	80	64	64	63	58	53									419
833	Boise-Eliot	50	91	85	83	72	70	71								1	523
834	Bridger		71	57	49	64	83	63									387
835	Bridlemile		61	74	77	75	86	77									450
837	Buckman		96	87	89	95	87	75									529
838	Capitol Hill		46	37	46	44	45	37									255
839	Chapman		59	74	74	76	73	58									414
840	Chief Joseph		32	43	35	44	45	35									234
841	Clarendon		59	60	63	54	55	48									339
842	Clark		66	86	92	85	79	91									499
843	Creston		29	48	39	43	48	39									246
844	Duniway		57	79	77	76	82	72									443
845	Edwards		24	33	32	38	35	37									199
847	Faubion		48	48	41	39	55	38									269
2413	Forest Park		77	79	83	70	88	59									456
850	Glencoe		75	76	82	73	70	66									442
854	Grout		55	61	54	56	41	53									320
855	Hayhurst		40	50	49	46	56	64	34	8	6						353
857	Hollyrood		44	60	55	52											211
860	Humboldt	18	44	39	39	45	38	31								1	255
861	Irvington		87	87	85	69	78	67									473
862	James John		97	68	75	83	76	82									481
864	Kelly		97	92	78	65	70	76									478
865	Kenton		20	30	24	26	29	37									166
866	King	60	82	72	84	78	80	68								1	525
868	Laurelhurst		78	84	79	82	126	109									558
869	Lee		38	56	65	55	47	72									333

PORTLAND PUBLIC SCHOOLS

Enrollment Summary, October 2004: by Program Type, School and Grade Level

Program Type		Grade Level															
ODE#	School	PK	KG	01	02	03	04	05	06	07	08	09	10	11	12	UN	Total
870	Lent		53	59	64	51	67	61									355
871	Lewis		37	51	38	45	48	52									271
872	Llewellyn		45	65	51	45	55	37									298
873	Maplewood		48	50	48	38	56	45									285
1278	Markham		53	61	51	47	55	34									301
875	Marysville		49	75	54	50	64	57									349
879	Peninsula		51	42	42	53	35	48									271
883	Richmond		64	60	70	64	71	64									393
1299	Rieke		41	47	37	49	49	43									266
884	Rigler		68	77	77	75	85	84									466
885	Rose City Park		78	72	67	72	65	79									433
886	Sabin	40	58	49	53	51	58	57	30	17							413
887	Scott		75	72	64	45	70	51									377
889	Sitton		48	65	50	64	60	51									338
890	Skyline		22	37	46	29	32	31									197
891	Smith		33	34	33	40	37	42									219
892	Stephenson		51	43	50	69	70	65									348
893	Sunnyside Environmental		46	34	26	38	33	38	70	87	87						459
895	Vernon	35	61	69	60	47	54	60									386
896	Vestal		56	55	49	53	59	50									322
900	Whitman		81	78	73	59	67	63									421
902	Woodlawn	38	72	61	51	73	56	58									409
903	Woodmere		71	77	82	82	67	79									458
904	Woodstock		60	63	55	59	50	56									343
Subtotal Elementary Schools		278	3,451	3,602	3,475	3,479	3,537	3,341	134	112	93					3	21,505
831	Beaumont								178	178	186						542
832	Binnsmead								220	236	231						687
848	Fernwood								156	198	228						582
849	George								171	144	158						473
852	Gray								187	148	185						520
853	Gregory Heights								202	226	202						630
858	Hosford								143	132	130						405
1277	Jackson								244	244	285						773
863	Kellogg								193	183	215						591
1243	Lane								186	219	187						592
877	Mt. Tabor								227	221	248						696
878	Ockley Green								123	126	136						385

PORTLAND PUBLIC SCHOOLS

Enrollment Summary, October 2004: by Program Type, School and Grade Level

Program Type		Grade Level															
ODE#	School	PK	KG	01	02	03	04	05	06	07	08	09	10	11	12	UN	Total
881	Portsmouth								161	152	147						460
888	Sellwood								210	214	179						603
894	Tubman								79	91	124						294
898	West Sylvan								304	280	300						884
899	Whitaker								97	100	92						289
Subtotal Middle Schools									3,081	3,092	3,233						9,406
906	Benson											429	405	361	306		1,501
909	Cleveland											371	374	309	278		1,332
911	Franklin											479	401	372	295		1,547
912	Grant											517	466	461	404		1,848
913	Jefferson Campus											172	144	177	168		661
4160	School of Champions												2	177	168		347
4161	School of Pride											172	142				314
914	Lincoln											388	371	344	341		1,444
915	Madison											271	300	287	205		1,063
917	Marshall Campus											216	210	236	244		906
4153	BizTech High											53	47	73	44		217
4154	Linus Pauling Academy											47	54	45	54		200
2175	Marshall Night School												11	18	69		98
4155	PDX Academy of International Studies											63	48	46	41		198
4156	Renaissance Arts Academy											53	50	54	36		193
918	Roosevelt Campus											253	210	183	204		850
4162	A.C.T. School											84	84	57	78		303
4165	P.O.W.E.R. School											86	59	57	59		261
4164	Spanish-English International											83	60	49	48		240
4163	Two Rivers Community School												7	20	19		46
922	Wilson											387	437	356	351		1,531
Subtotal High Schools												3,483	3,318	3,086	2,796		12,683
Subtotal Regular Schools & Programs		278	3,451	3,602	3,475	3,479	3,537	3,341	3,215	3,204	3,326	3,483	3,318	3,086	2,796	3	43,594
IB. FOCUS / ALTERNATIVE PROGRAMS																	
4054	Access																see Sabin
1363	da Vinci								121	121	108						350
1362	Environmental Middle School																see Sunnyside
2724	Head Start Early Childhood Education	528															528
916	Metropolitan Learning Center		25	24	27	24	23	25	51	57	45	42	40	26	30		439
4227	Native Montessori Program	14	9														23

PORTLAND PUBLIC SCHOOLS

Enrollment Summary, October 2004: by Program Type, School and Grade Level

Program Type		Grade Level															
ODE#	School	PK	KG	01	02	03	04	05	06	07	08	09	10	11	12	UN	Total
3167	Portland Evening H.S. at Benson												2	5	13		20
1818	Portland Night H.S. at Grant												3	18	55		76
920	Vocational Village												2	56	88		146
1364	Winterhaven (at Brooklyn)		29	27	24	26	30	28	51	55	26						296
Subtotal Focus / Alternative Programs		542	63	51	51	50	53	53	223	233	179	42	47	105	186	0	1,878
Subtotal Regular & Focus Programs		820	3,514	3,653	3,526	3,529	3,590	3,394	3,438	3,437	3,505	3,525	3,365	3,191	2,982	3	45,472
II. COMMUNITY-BASED PROGRAMS																	
1811	Albina Youth Opportunity School											4	4	12	23		43
1628	DePaul Center											1	7	4	6		18
2409	LISTOS											31	25	1			57
1803	Mt. Scott Park Center for Learning								1	3	17						21
8002	Mt. Scott Park Center for Learning H.S.											7	31	18	6		62
3012	New Avenues for Youth											2		3	15		20
3151	Open Meadow / CRUE													6	38		44
1821	Open Meadow H.S.											12	24	23	22		81
3021	Open Meadow M.S.								9	20	18	2					49
2761	P.C.C. Bilingual											72	33	38	38		181
2762	P.C.C. G.E.D.											7	21	26	37		91
2763	P.C.C. H.S. Completion											5	16	53	94		168
2752	P.I.C. Night School											8					8
1816	P.O.I.C.								1	3	1	3	29	32	39		108
1658	Pacific Crest Community School											1	1	7	3		13
3496	Pathfinders Academy											3	1	5	1		10
1815	Portland International Community											3	5	6	9		23
1820	Quest Schools											6	16	21	34		77
2774	Y.E.I. Teen Parent											1	4	9	12		26
1875	Youth Employment Institute												3	17	7		27
1835	Youth Progress Association												1	5	13		19
1885	YouthBuilders														25		25
Subtotal Community-based Programs		0	0	0	0	0	0	0	11	26	37	168	221	286	422	0	1,171
III. SPECIAL EDUCATION PROGRAMS																	
1812	C.T.C. Jefferson H.S.														16		16
1813	C.T.C. P.S.U.														19		19
1814	C.T.C. Southeast														58		58

PORTLAND PUBLIC SCHOOLS

Enrollment Summary, October 2004: by Program Type, School and Grade Level

Program Type		Grade Level															
ODE#	School	PK	KG	01	02	03	04	05	06	07	08	09	10	11	12	UN	Total
908	Clinton Street School									1	5	2	5	7	17		37
3506	B Programs at Green Thumb, Foster & Youngson			6	5	1	6	3	18	8	13	15	16	18	25		134
2751	Home Instruction														1		1
907	John's Landing School									1	5	1	9	5	2		23
2275	Morrison Breakthrough											1	4	9	4		18
1279	Morrison Hand in Hand	7	9	4												2	22
1281	Nickerson Adolescent D.T.										3	4	4	1	1		13
880	Parry Center			3		3	10	8	9	3	3						39
2765	Part-time Home/Private		3	10	11	11	9	9	5	4	3	2	1	1	1		70
1805	Providence Hospital			2	2		2		1	1	1		1	3	4		17
923	Rosemont									1	4	14	14	13	6		52
897	Waverly Children's Home		1	1	4	3	2	5	2								18
921	White Shield										4	5	1	5	9		24
1689	Woodmont											1					1
Subtotal Special Education Programs		7	13	26	22	18	29	25	35	19	41	45	55	62	163	2	562
IV. PUBLIC CHARTER PROGRAMS																	
3451	CM2's Opal School	6	11	14	14	12	14										71
3991	Emerson Public Charter		21	18	17	19	9	13									97
4215	Garden Laboratory Charter School		17	8	10												35
4212	Self Enhancement Academy								49								49
3616	Trillium Public Charter		13	23	19	22	11	10	14	19	25	15	13	9	6		199
Subtotal Public Charter Programs		6	62	63	60	53	34	23	63	19	25	15	13	9	6	0	451
Summary		833	3,589	3,742	3,608	3,600	3,653	3,442	3,547	3,501	3,608	3,753	3,654	3,548	3,573	5	47,656

Included in the column titled "UN", are unassigned or unclassified students, e.g., special education students who attend special education classes in separate classrooms.

The Environmental Middle School combined with Sunnyside Elementary and is now called Sunnyside Environmental School. The Odyssey program and its students (formerly at Chapman Elementary) are now part of Hayhurst Elementary. The Family Cooperative program (formerly at Sunnyside) is now part of Bridger Elementary.

PORTLAND PUBLIC SCHOOLS

Enrollment Summary, October 2004: by Program Type, School and Ethnicity

Program Type ODE# School		Ethnicity												Total #
		American Indian		European American		African American		Asian American		Hispanic American		Unspecified		
		#	%	#	%	#	%	#	%	#	%	#	%	
IA. REGULAR SCHOOLS & PROGRAMS														
822	Abernethy	2	1.0	165	81.3	12	5.9	19	9.4	5	2.5			203
823	Ainsworth	2	0.4	400	80.2	16	3.2	25	5.0	55	11.0	1	0.2	499
824	Alameda	9	1.4	516	81.9	49	7.8	35	5.6	16	2.5	5	0.8	630
825	Applegate	4	2.9	41	29.7	40	29.0	12	8.7	41	29.7			138
826	Arleta	10	3.0	190	57.2	24	7.2	59	17.8	48	14.5	1	0.3	332
827	Astor	12	4.2	204	71.1	24	8.4	14	4.9	33	11.5			287
828	Atkinson	5	0.9	239	43.2	29	5.2	113	20.4	165	29.8	2	0.4	553
829	Ball	3	1.3	60	26.3	68	29.8	25	11.0	72	31.6			228
830	Beach	5	1.2	115	27.4	123	29.4	44	10.5	131	31.3	1	0.2	419
833	Boise-Eliot	9	1.7	124	23.7	291	55.6	30	5.7	69	13.2			523
834	Bridger	8	2.1	243	62.8	34	8.8	56	14.5	46	11.9			387
835	Bridlemile	4	0.9	373	82.9	17	3.8	21	4.7	29	6.4	6	1.3	450
837	Buckman	12	2.3	412	77.9	32	6.0	32	6.0	41	7.8			529
838	Capitol Hill	9	3.5	200	78.4	11	4.3	10	3.9	22	8.6	3	1.2	255
839	Chapman	9	2.2	320	77.3	29	7.0	20	4.8	33	8.0	3	0.7	414
840	Chief Joseph	5	2.1	142	60.7	40	17.1	18	7.7	29	12.4			234
841	Clarendon	8	2.4	64	18.9	44	13.0	29	8.6	194	57.2			339
842	Clark	14	2.8	231	46.3	65	13.0	136	27.3	53	10.6			499
843	Creston	7	2.8	136	55.3	21	8.5	45	18.3	36	14.6	1	0.4	246
844	Duniway	3	0.7	391	88.3	11	2.5	23	5.2	15	3.4			443
845	Edwards	4	2.0	167	83.9	2	1.0	13	6.5	5	2.5	8	4.0	199
847	Faubion	6	2.2	91	33.8	125	46.5	14	5.2	33	12.3			269
2413	Forest Park	1	0.2	343	75.2	6	1.3	99	21.7	5	1.1	2	0.4	456
850	Glencoe	5	1.1	357	80.8	34	7.7	19	4.3	22	5.0	5	1.1	442
854	Grout	8	2.5	202	63.1	24	7.5	46	14.4	40	12.5			320
855	Hayhurst	10	2.8	248	70.3	23	6.5	20	5.7	48	13.6	4	1.1	353
857	Hollyrood	2	0.9	176	83.4	6	2.8	16	7.6	10	4.7	1	0.5	211
860	Humboldt	10	3.9	23	9.0	160	62.7	4	1.6	58	22.7			255
861	Irvington	5	1.1	205	43.3	226	47.8	15	3.2	20	4.2	2	0.4	473
862	James John	21	4.4	209	43.5	57	11.9	54	11.2	138	28.7	2	0.4	481
864	Kelly	17	3.6	267	55.9	30	6.3	50	10.5	113	23.6	1	0.2	478
865	Kenton	6	3.6	62	37.3	44	26.5	31	18.7	22	13.3	1	0.6	166
866	King	8	1.5	40	7.6	363	69.1	22	4.2	88	16.8	4	0.8	525
868	Laurelhurst	7	1.3	437	78.3	36	6.5	32	5.7	39	7.0	7	1.3	558

PORTLAND PUBLIC SCHOOLS

Enrollment Summary, October 2004: by Program Type, School and Ethnicity

Program Type ODE# School		Ethnicity												Total #
		American Indian		European American		African American		Asian American		Hispanic American		Unspecified		
		#	%	#	%	#	%	#	%	#	%	#	%	
869	Lee	12	3.6	124	37.2	53	15.9	91	27.3	51	15.3	2	0.6	333
870	Lent	3	0.8	174	49.0	27	7.6	56	15.8	93	26.2	2	0.6	355
871	Lewis	8	3.0	225	83.0	7	2.6	13	4.8	18	6.6			271
872	Llewellyn	5	1.7	219	73.5	23	7.7	10	3.4	15	5.0	26	8.7	298
873	Maplewood	6	2.1	239	83.9	15	5.3	14	4.9	11	3.9			285
1278	Markham	1	0.3	169	56.1	49	16.3	23	7.6	33	11.0	26	8.6	301
875	Marysville	15	4.3	167	47.9	42	12.0	64	18.3	59	16.9	2	0.6	349
879	Peninsula	17	6.3	67	24.7	59	21.8	33	12.2	94	34.7	1	0.4	271
883	Richmond	6	1.5	249	63.4	29	7.4	84	21.4	5	1.3	20	5.1	393
1299	Rieke	1	0.4	215	80.8	10	3.8	31	11.7	7	2.6	2	0.8	266
884	Rigler	11	2.4	90	19.3	86	18.5	68	14.6	211	45.3			466
885	Rose City Park	12	2.8	285	65.8	33	7.6	69	15.9	33	7.6	1	0.2	433
886	Sabin	5	1.2	137	33.2	198	47.9	31	7.5	41	9.9	1	0.2	413
887	Scott	8	2.1	185	49.1	57	15.1	52	13.8	74	19.6	1	0.3	377
889	Sitton	17	5.0	142	42.0	67	19.8	29	8.6	83	24.6			338
890	Skyline	5	2.5	169	85.8	1	0.5	16	8.1	5	2.5	1	0.5	197
891	Smith	1	0.5	185	84.5	3	1.4	10	4.6	18	8.2	2	0.9	219
892	Stephenson	4	1.1	310	89.1	8	2.3	21	6.0	5	1.4			348
893	Sunnyside Environmental	13	2.8	341	74.3	51	11.1	25	5.4	29	6.3			459
895	Vernon	7	1.8	38	9.8	237	61.4	18	4.7	86	22.3			386
896	Vestal	6	1.9	155	48.1	46	14.3	72	22.4	43	13.4			322
900	Whitman	17	4.0	206	48.9	34	8.1	50	11.9	111	26.4	3	0.7	421
902	Woodlawn	1	0.2	48	11.7	276	67.5	23	5.6	61	14.9			409
903	Woodmere	10	2.2	253	55.2	26	5.7	64	14.0	103	22.5	2	0.4	458
904	Woodstock	8	2.3	180	52.5	17	5.0	123	35.9	11	3.2	4	1.2	343
Subtotal Elementary Schools		449	2.1	11,965	55.6	3,570	16.6	2,291	10.7	3,074	14.3	156	0.7	21,505
831	Beaumont	9	1.7	254	46.9	208	38.4	39	7.2	30	5.5	2	0.4	542
832	Binnsmead	15	2.2	329	47.9	80	11.6	152	22.1	110	16.0	1	0.1	687
848	Fernwood	7	1.2	359	61.7	174	29.9	17	2.9	25	4.3			582
849	George	18	3.8	166	35.1	99	20.9	51	10.8	139	29.4			473
852	Gray	9	1.7	420	80.8	22	4.2	29	5.6	37	7.1	3	0.6	520
853	Gregory Heights	16	2.5	323	51.3	69	11.0	116	18.4	105	16.7	1	0.2	630
858	Hosford	10	2.5	243	60.0	37	9.1	39	9.6	75	18.5	1	0.2	405
1277	Jackson	6	0.8	623	80.6	39	5.0	53	6.9	50	6.5	2	0.3	773
863	Kellogg	23	3.9	326	55.2	66	11.2	114	19.3	62	10.5			591

PORTLAND PUBLIC SCHOOLS

Enrollment Summary, October 2004: by Program Type, School and Ethnicity

Program Type ODE# School		Ethnicity												Total #
		American Indian		European American		African American		Asian American		Hispanic American		Unspecified		
		#	%	#	%	#	%	#	%	#	%	#	%	
1243	Lane	20	3.4	329	55.6	35	5.9	59	10.0	145	24.5	4	0.7	592
877	Mt. Tabor	11	1.6	513	73.7	44	6.3	86	12.4	40	5.7	2	0.3	696
878	Ockley Green	10	2.6	89	23.1	161	41.8	39	10.1	86	22.3			385
881	Portsmouth	17	3.7	189	41.1	122	26.5	31	6.7	101	22.0			460
888	Sellwood	12	2.0	503	83.4	25	4.1	34	5.6	28	4.6	1	0.2	603
894	Tubman	9	3.1	26	8.8	207	70.4	11	3.7	41	13.9			294
898	West Sylvan	5	0.6	731	82.7	29	3.3	77	8.7	40	4.5	2	0.2	884
899	Whitaker	9	3.1	69	23.9	119	41.2	15	5.2	76	26.3	1	0.3	289
Subtotal Middle Schools		206	2.2	5,492	58.4	1,536	16.3	962	10.2	1,190	12.7	20	0.2	9,406
906	Benson	21	1.4	599	39.9	401	26.7	359	23.9	112	7.5	9	0.6	1,501
909	Cleveland	26	2.0	1,057	79.4	80	6.0	90	6.8	70	5.3	9	0.7	1,332
911	Franklin	43	2.8	1,020	65.9	102	6.6	221	14.3	158	10.2	3	0.2	1,547
912	Grant	32	1.7	1,262	68.3	381	20.6	100	5.4	70	3.8	3	0.2	1,848
913	Jefferson Campus	20	3.0	81	12.3	443	67.0	34	5.1	82	12.4	1	0.2	661
4160	School of Champions	8	2.3	34	9.8	240	69.2	25	7.2	39	11.2	1	0.3	347
4161	School of Pride	12	3.8	47	15.0	203	64.6	9	2.9	43	13.7			314
914	Lincoln	15	1.0	1,172	81.2	76	5.3	117	8.1	62	4.3	2	0.1	1,444
915	Madison	28	2.6	518	48.7	196	18.4	147	13.8	174	16.4			1,063
917	Marshall Campus	23	2.5	502	55.4	68	7.5	109	12.0	204	22.5			906
4153	BizTech High	4	1.8	125	57.6	19	8.8	34	15.7	35	16.1			217
4154	Linus Pauling Academy	4	2.0	117	58.5	17	8.5	32	16.0	30	15.0			200
2175	Marshall Night School	1	1.0	45	45.9	2	2.0	6	6.1	44	44.9			98
4155	PDX Academy of International Studies	11	5.6	91	46.0	14	7.1	28	14.1	54	27.3			198
4156	Renaissance Arts Academy	3	1.6	124	64.2	16	8.3	9	4.7	41	21.2			193
918	Roosevelt Campus	23	2.7	352	41.4	182	21.4	76	8.9	217	25.5			850
4162	A.C.T. School	5	1.7	163	53.8	49	16.2	41	13.5	45	14.9			303
4165	P.O.W.E.R. School	8	3.1	109	41.8	95	36.4	24	9.2	25	9.6			261
4164	Spanish-English International	7	2.9	58	24.2	28	11.7	8	3.3	139	57.9			240
4163	Two Rivers Community School	3	6.5	22	47.8	10	21.7	3	6.5	8	17.4			46
922	Wilson	19	1.2	1,269	82.9	81	5.3	97	6.3	63	4.1	2	0.1	1,531
Subtotal High Schools		250	2.0	7,832	61.8	2,010	15.8	1,350	10.6	1,212	9.6	29	0.2	12,683
Subtotal Regular Schools & Programs		905	2.1	25,289	58.0	7,116	16.3	4,603	10.6	5,476	12.6	205	0.5	43,594
IB. FOCUS / ALTERNATIVE PROGRAMS														
4054	Access													see Sabin

PORTLAND PUBLIC SCHOOLS

Enrollment Summary, October 2004: by Program Type, School and Ethnicity

Program Type ODE# School		Ethnicity												Total #
		American Indian		European American		African American		Asian American		Hispanic American		Unspecified		
		#	%	#	%	#	%	#	%	#	%	#	%	
1363	da Vinci	9	2.6	274	78.3	39	11.1	16	4.6	11	3.1	1	0.3	350
1362	Environmental Middle School													see Sunnyside
2724	Head Start Early Childhood Education	4	0.8	120	22.7	93	17.6	91	17.2	203	38.4	17	3.2	528
916	Metropolitan Learning Center	4	0.9	363	82.7	26	5.9	14	3.2	16	3.6	16	3.6	439
4227	Native Montessori Program	22	95.7			1	4.3							23
3167	Portland Evening H.S. at Benson	1	5.0	2	10.0	3	15.0	1	5.0			13	65.0	20
1818	Portland Night H.S. at Grant	4	5.3	42	55.3	15	19.7	4	5.3	11	14.5			76
920	Vocational Village	5	3.4	71	48.6	49	33.6	10	6.8	11	7.5			146
1364	Winterhaven (at Brooklyn)	4	1.4	239	80.7	6	2.0	15	5.1	15	5.1	17	5.7	296
Subtotal Focus / Alternative Programs		53	2.8	1,111	59.2	232	12.4	151	8.0	267	14.2	64	3.4	1,878
Subtotal Regular & Focus Programs		958	2.1	26,400	58.1	7,348	16.2	4,754	10.5	5,743	12.6	269	0.6	45,472
II. COMMUNITY-BASED PROGRAMS														
1811	Albina Youth Opportunity School	3	7.0	15	34.9	17	39.5	3	7.0	5	11.6			43
1628	DePaul Center	2	11.1	11	61.1	1	5.6	1	5.6	3	16.7			18
2409	LISTOS			1	1.8					56	98.2			57
1803	Mt. Scott Park Center for Learning	1	4.8	18	85.7	1	4.8			1	4.8			21
8002	Mt. Scott Park Center for Learning H.S.	1	1.6	47	75.8	7	11.3	1	1.6	6	9.7			62
3012	New Avenues for Youth			16	80.0	2	10.0			2	10.0			20
3151	Open Meadow / CRUE	4	9.1	29	65.9	6	13.6	2	4.5	3	6.8			44
1821	Open Meadow H.S.	2	2.5	56	69.1	15	18.5	3	3.7	5	6.2			81
3021	Open Meadow M.S.	2	4.1	32	65.3	13	26.5			2	4.1			49
2761	P.C.C. Bilingual			44	24.3	12	6.6	30	16.6	95	52.5			181
2762	P.C.C. G.E.D.	6	6.6	58	63.7	17	18.7	2	2.2	6	6.6	2	2.2	91
2763	P.C.C. H.S. Completion	7	4.2	124	73.8	18	10.7	13	7.7	3	1.8	3	1.8	168
2752	P.I.C. Night School									8	100.0			8
1816	P.O.I.C.	11	10.2	12	11.1	59	54.6	4	3.7	22	20.4			108
1658	Pacific Crest Community School	2	15.4	9	69.2	1	7.7					1	7.7	13
3496	Pathfinders Academy			6	60.0	1	10.0	1	10.0	2	20.0			10
1815	Portland International Community			4	17.4	1	4.3	9	39.1	8	34.8	1	4.3	23
1820	Quest Schools	4	5.2	54	70.1	14	18.2	3	3.9	2	2.6			77
2774	Y.E.I. Teen Parent	1	3.8	7	26.9	14	53.8	1	3.8	3	11.5			26
1875	Youth Employment Institute	2	7.4	9	33.3	11	40.7	2	7.4	3	11.1			27
1835	Youth Progress Association	2	10.5	14	73.7	1	5.3			2	10.5			19

PORTLAND PUBLIC SCHOOLS

Enrollment Summary, October 2004: by Program Type, School and Ethnicity

Program Type ODE# School		Ethnicity												Total #
		American Indian		European American		African American		Asian American		Hispanic American		Unspecified		
		#	%	#	%	#	%	#	%	#	%	#	%	
1885	YouthBuilders			11	44.0	7	28.0	2	8.0	5	20.0			25
Subtotal Community-based Programs		50	4.3	577	49.3	218	18.6	77	6.6	242	20.7	7	0.6	1,171
III. SPECIAL EDUCATION PROGRAMS														
1812	C.T.C. Jefferson H.S.			7	43.8	7	43.8	1	6.3	1	6.3			16
1813	C.T.C. P.S.U.	1	5.3	17	89.5	1	5.3							19
1814	C.T.C. Southeast	1	1.7	40	69.0	12	20.7	3	5.2	1	1.7	1	1.7	58
908	Clinton Street School	1	2.7	28	75.7	3	8.1	1	2.7	4	10.8			37
3506	B Programs at Green Thumb, Foster & Youngson	1	0.7	65	48.5	56	41.8	2	1.5	7	5.2	3	2.2	134
2751	Home Instruction					1	100.0							1
907	John's Landing School	2	8.7	17	73.9	2	8.7	1	4.3	1	4.3			23
2275	Morrison Breakthrough	5	27.8	7	38.9					6	33.3			18
1279	Morrison Hand in Hand	2	9.1	15	68.2	5	22.7							22
1281	Nickerson Adolescent D.T.	2	15.4	8	61.5	3	23.1							13
880	Parry Center	1	2.6	31	79.5	2	5.1	1	2.6	4	10.3			39
2765	Part-time Home/Private	2	2.9	47	67.1					1	1.4	20	28.6	70
1805	Providence Hospital			16	94.1					1	5.9			17
923	Rosemont	1	1.9	39	75.0	5	9.6	1	1.9	6	11.5			52
897	Waverly Children's Home			12	66.7	4	22.2			2	11.1			18
921	White Shield	1	4.2	9	37.5	5	20.8	1	4.2	7	29.2	1	4.2	24
1689	Woodmont					1	100.0							1
Subtotal Special Education Programs		20	3.6	358	63.7	107	19.0	11	2.0	41	7.3	25	4.4	562
IV. PUBLIC CHARTER PROGRAMS														
3451	CM2's Opal School	2	2.8	53	74.6	10	14.1			4	5.6	2	2.8	71
3991	Emerson Public Charter	1	1.0	62	63.9	14	14.4	12	12.4	7	7.2	1	1.0	97
4215	Garden Laboratory Charter School			34	97.1			1	2.9					35
4212	Self Enhancement Academy	1	2.0	3	6.1	43	87.8			2	4.1			49
3616	Trillium Public Charter	7	3.5	138	69.3	41	20.6	5	2.5	6	3.0	2	1.0	199
Subtotal Public Charter Programs		11	2.4	290	64.3	108	23.9	18	4.0	19	4.2	5	1.1	451
Summary		1,039	2.2	27,625	58.0	7,781	16.3	4,860	10.2	6,045	12.7	306	0.6	47,656

The Environmental Middle School combined with Sunnyside Elementary and is now called Sunnyside Environmental School. The Odyssey program and its students (formerly at Chapman Elementary) are now part of Hayhurst Elementary. The Family Cooperative program (formerly at Sunnyside) is now part of Bridger Elementary.

PORTLAND PUBLIC SCHOOLS

Enrollment Summary, October 2004: by Program Type, School and Gender

Program Type		Gender				Total
		Female		Male		
ODE#	School	#	%	#	%	#
IA. REGULAR SCHOOLS & PROGRAMS						
822	Abernethy	101	49.8	102	50.2	203
823	Ainsworth	268	53.7	231	46.3	499
824	Alameda	312	49.5	318	50.5	630
825	Applegate	69	50.0	69	50.0	138
826	Arleta	151	45.5	181	54.5	332
827	Astor	139	48.4	148	51.6	287
828	Atkinson	290	52.4	263	47.6	553
829	Ball	109	47.8	119	52.2	228
830	Beach	190	45.3	229	54.7	419
833	Boise-Eliot	251	48.0	272	52.0	523
834	Bridger	188	48.6	199	51.4	387
835	Bridlemile	244	54.2	206	45.8	450
837	Buckman	300	56.7	229	43.3	529
838	Capitol Hill	130	51.0	125	49.0	255
839	Chapman	203	49.0	211	51.0	414
840	Chief Joseph	103	44.0	131	56.0	234
841	Clarendon	162	47.8	177	52.2	339
842	Clark	241	48.3	258	51.7	499
843	Creston	111	45.1	135	54.9	246
844	Duniway	209	47.2	234	52.8	443
845	Edwards	109	54.8	90	45.2	199
847	Faubion	147	54.6	122	45.4	269
2413	Forest Park	214	46.9	242	53.1	456
850	Glencoe	209	47.3	233	52.7	442
854	Grout	152	47.5	168	52.5	320
855	Hayhurst	185	52.4	168	47.6	353
857	Hollyrood	121	57.3	90	42.7	211
860	Humboldt	117	45.9	138	54.1	255
861	Irvington	231	48.8	242	51.2	473
862	James John	234	48.6	247	51.4	481
864	Kelly	250	52.3	228	47.7	478
865	Kenton	84	50.6	82	49.4	166
866	King	266	50.7	259	49.3	525
868	Laurelhurst	284	50.9	274	49.1	558
869	Lee	146	43.8	187	56.2	333
870	Lent	171	48.2	184	51.8	355
871	Lewis	142	52.4	129	47.6	271
872	Llewellyn	146	49.0	152	51.0	298
873	Maplewood	134	47.0	151	53.0	285
1278	Markham	140	46.5	161	53.5	301
875	Marysville	160	45.8	189	54.2	349
879	Peninsula	130	48.0	141	52.0	271
883	Richmond	214	54.5	179	45.5	393
1299	Rieke	138	51.9	128	48.1	266
884	Rigler	219	47.0	247	53.0	466
885	Rose City Park	195	45.0	238	55.0	433

PORTLAND PUBLIC SCHOOLS

Enrollment Summary, October 2004: by Program Type, School and Gender

Program Type		Gender				Total
		Female		Male		
ODE#	School	#	%	#	%	#
886	Sabin	198	47.9	215	52.1	413
887	Scott	179	47.5	198	52.5	377
889	Sitton	155	45.9	183	54.1	338
890	Skyline	102	51.8	95	48.2	197
891	Smith	110	50.2	109	49.8	219
892	Stephenson	174	50.0	174	50.0	348
893	Sunnyside Environmental	230	50.1	229	49.9	459
895	Vernon	200	51.8	186	48.2	386
896	Vestal	170	52.8	152	47.2	322
900	Whitman	200	47.5	221	52.5	421
902	Woodlawn	195	47.7	214	52.3	409
903	Woodmere	234	51.1	224	48.9	458
904	Woodstock	192	56.0	151	44.0	343
Subtotal Elementary Schools		10,648	49.5	10,857	50.5	21,505
831	Beaumont	267	49.3	275	50.7	542
832	Binnsmead	313	45.6	374	54.4	687
848	Fernwood	290	49.8	292	50.2	582
849	George	222	46.9	251	53.1	473
852	Gray	238	45.8	282	54.2	520
853	Gregory Heights	308	48.9	322	51.1	630
858	Hosford	208	51.4	197	48.6	405
1277	Jackson	376	48.6	397	51.4	773
863	Kellogg	269	45.5	322	54.5	591
1243	Lane	271	45.8	321	54.2	592
877	Mt. Tabor	330	47.4	366	52.6	696
878	Ockley Green	178	46.2	207	53.8	385
881	Portsmouth	219	47.6	241	52.4	460
888	Sellwood	327	54.2	276	45.8	603
894	Tubman	154	52.4	140	47.6	294
898	West Sylvan	454	51.4	430	48.6	884
899	Whitaker	129	44.6	160	55.4	289
Subtotal Middle Schools		4,553	48.4	4,853	51.6	9,406
906	Benson	622	41.4	879	58.6	1,501
909	Cleveland	674	50.6	658	49.4	1,332
911	Franklin	748	48.4	799	51.6	1,547
912	Grant	943	51.0	905	49.0	1,848
913	Jefferson Campus	340	51.4	321	48.6	661
4160	School of Champions	175	50.4	172	49.6	347
4161	School of Pride	165	52.5	149	47.5	314
914	Lincoln	703	48.7	741	51.3	1,444
915	Madison	545	51.3	518	48.7	1,063
917	Marshall Campus	410	45.3	496	54.7	906
4153	BizTech High	85	39.2	132	60.8	217
4154	Linus Pauling Academy	86	43.0	114	57.0	200
2175	Marshall Night School	41	41.8	57	58.2	98
4155	PDX Academy of International Studies	100	50.5	98	49.5	198
4156	Renaissance Arts Academy	98	50.8	95	49.2	193

PORTLAND PUBLIC SCHOOLS

Enrollment Summary, October 2004: by Program Type, School and Gender

Program Type		Gender				Total
		Female		Male		
ODE#	School	#	%	#	%	#
918	Roosevelt Campus	422	49.6	428	50.4	850
4162	A.C.T. School	135	44.6	168	55.4	303
4165	P.O.W.E.R. School	138	52.9	123	47.1	261
4164	Spanish-English International	119	49.6	121	50.4	240
4163	Two Rivers Community School	30	65.2	16	34.8	46
922	Wilson	720	47.0	811	53.0	1,531
Subtotal High Schools		6,127	48.3	6,556	51.7	12,683
Subtotal Regular Schools & Programs		21,328	48.9	22,266	51.1	43,594
IB. FOCUS / ALTERNATIVE PROGRAMS						
4054	Access					see Sabin
1363	da Vinci	234	66.9	116	33.1	350
1362	Environmental Middle School					see Sunnyside
2724	Head Start Early Childhood Education	275	52.1	253	47.9	528
916	Metropolitan Learning Center	253	57.6	186	42.4	439
4227	Native Montessori Program	13	56.5	10	43.5	23
3167	Portland Evening H.S. at Benson	10	50.0	10	50.0	20
1818	Portland Night H.S. at Grant	40	52.6	36	47.4	76
920	Vocational Village	61	41.8	85	58.2	146
1364	Winterhaven (at Brooklyn)	136	45.9	160	54.1	296
Subtotal Focus / Alternative Programs		1,022	54.4	856	45.6	1,878
Subtotal Regular & Focus Programs		22,350	49.2	23,122	50.8	45,472
II. COMMUNITY-BASED PROGRAMS						
1811	Albina Youth Opportunity School	19	44.2	24	55.8	43
1628	DePaul Center	5	27.8	13	72.2	18
2409	LISTOS	23	40.4	34	59.6	57
1803	Mt. Scott Park Center for Learning	9	42.9	12	57.1	21
8002	Mt. Scott Park Center for Learning H.S.	35	56.5	27	43.5	62
3012	New Avenues for Youth	8	40.0	12	60.0	20
3151	Open Meadow / CRUE	24	54.5	20	45.5	44
1821	Open Meadow H.S.	35	43.2	46	56.8	81
3021	Open Meadow M.S.	25	51.0	24	49.0	49
2761	P.C.C. Bilingual	54	29.8	127	70.2	181
2762	P.C.C. G.E.D.	42	46.2	49	53.8	91
2763	P.C.C. H.S. Completion	93	55.4	75	44.6	168
2752	P.I.C. Night School	2	25.0	6	75.0	8
1816	P.O.I.C.	52	48.1	56	51.9	108
1658	Pacific Crest Community School	5	38.5	8	61.5	13
3496	Pathfinders Academy	10	100.0			10
1815	Portland International Community	9	39.1	14	60.9	23
1820	Quest Schools	29	37.7	48	62.3	77
2774	Y.E.I. Teen Parent	25	96.2	1	3.8	26
1875	Youth Employment Institute	14	51.9	13	48.1	27
1835	Youth Progress Association	3	15.8	16	84.2	19
1885	YouthBuilders	10	40.0	15	60.0	25
Subtotal Community-based Programs		531	45.3	640	54.7	1,171

PORTLAND PUBLIC SCHOOLS

Enrollment Summary, October 2004: by Program Type, School and Gender

Program Type		Gender				Total #
		Female		Male		
ODE#	School	#	%	#	%	#
III. SPECIAL EDUCATION PROGRAMS						
1812	C.T.C. Jefferson H.S.	6	37.5	10	62.5	16
1813	C.T.C. P.S.U.	11	57.9	8	42.1	19
1814	C.T.C. Southeast	24	41.4	34	58.6	58
908	Clinton Street School	8	21.6	29	78.4	37
3506	B Programs at Green Thumb, Foster & Youngson	14	10.4	120	89.6	134
2751	Home Instruction			1	100.0	1
907	John's Landing School	17	73.9	6	26.1	23
2275	Morrison Breakthrough	3	16.7	15	83.3	18
1279	Morrison Hand in Hand	6	27.3	16	72.7	22
1281	Nickerson Adolescent D.T.	7	53.8	6	46.2	13
880	Parry Center	17	43.6	22	56.4	39
2765	Part-time Home/Private	28	40.0	42	60.0	70
1805	Providence Hospital	8	47.1	9	52.9	17
923	Rosemont	52	100.0			52
897	Waverly Children's Home	2	11.1	16	88.9	18
921	White Shield	24	100.0			24
1689	Woodmont			1	100.0	1
Subtotal Special Education Programs		227	40.4	335	59.6	562
IV. PUBLIC CHARTER PROGRAMS						
3451	CM2's Opal School	42	59.2	29	40.8	71
3991	Emerson Public Charter	50	51.5	47	48.5	97
4215	Garden Laboratory Charter School	13	37.1	22	62.9	35
4212	Self Enhancement Academy	22	44.9	27	55.1	49
3616	Trillium Public Charter	81	40.7	118	59.3	199
Subtotal Public Charter Programs		208	46.1	243	53.9	451
Summary		23,316	48.9	24,340	51.1	47,656

The Environmental Middle School combined with Sunnyside Elementary and is now called Sunnyside Environmental School. The Odyssey program and its students (formerly at Chapman Elementary) are now part of Hayhurst Elementary. The Family Cooperative program (formerly at Sunnyside) is now part of Bridger Elementary.