

**Portland Public Schools
Enrollment Summaries
October, 2005**

Table of Contents

[Introduction](#)

Historical Enrollment

[Enrollment Trends: 1, 5 and 10 year](#)

[Recent Enrollment Trends](#)

October 2005 Enrollment

[By Grade](#)

[By Ethnicity](#)

[By Gender](#)

[By Program Type](#)

Introduction

This summary report is a profile of current and historical enrollments for Portland Public Schools. Included are various summaries of these data, *e.g.*, by school/program, grade level, ethnicity, and gender.

Enrollment counts are compiled on or about the first of October. An enrolled student is defined as a student who attends one or more schools or programs within the District. Regardless of the number of schools or programs attended, each student is counted only once; the counts are unduplicated.

PORTLAND PUBLIC SCHOOLS

Enrollment Summary by Program Type, School and Year 1996-97 through 2005-06

Program Type												1-Year Trend (2005-06 - 2004-05)		5-Year Trend (2005-06 - 2001-02)		10-Year Trend (2005-06 - 1996-97)	
												#	%	#	%	#	%
ODE#	School	1996-97	1997-98	1998-99	1999-00	2000-01	2001-02	2002-03	2003-04	2004-05	2005-06	#	%	#	%	#	%
IA. REGULAR SCHOOLS & PROGRAMS																	
822	Abernethy	208	202	209	185	198	204	213	199	203	366	163	80.3	162	79.4	158	76.0
823	Ainsworth	523	530	547	565	552	549	557	522	499	492	-7	-1.4	-57	-10.4	-31	-5.9
824	Alameda	671	696	685	652	641	622	648	631	630	669	39	6.2	47	7.6	-2	-0.3
825	Applegate	269	269	252	242	203	212	209	198	138	closed	N/A		N/A		N/A	
826	Arleta	470	438	407	387	369	352	339	330	332	313	-19	-5.7	-39	-11.1	-157	-33.4
827	Astor	393	380	354	349	352	337	311	283	287	279	-8	-2.8	-58	-17.2	-114	-29.0
828	Atkinson	453	521	533	545	566	543	536	537	553	558	5	0.9	15	2.8	105	23.2
829	Ball	332	299	350	333	318	309	312	226	228	271	43	18.9	-38	-12.3	-61	-18.4
830	Beach	766	722	718	637	553	504	468	411	419	414	-5	-1.2	-90	-17.9	-352	-46.0
833	Boise-Eliot	684	696	676	696	685	672	647	584	523	461	-62	-11.9	-211	-31.4	-223	-32.6
834	Bridger	276	261	284	301	284	309	431	378	387	388	1	0.3	79	25.6	112	40.6
835	Bridlemile	506	491	490	475	477	449	436	460	450	459	9	2.0	10	2.2	-47	-9.3
836	Brooklyn	240	211	187	139	156	140	121			closed	N/A		N/A		N/A	
837	Buckman	541	525	547	563	536	530	534	526	529	537	8	1.5	7	1.3	-4	-0.7
838	Capitol Hill	339	325	331	305	285	310	308	282	255	335	80	31.4	25	8.1	-4	-1.2
839	Chapman	581	547	550	558	513	527	484	449	414	453	39	9.4	-74	-14.0	-128	-22.0
840	Chief Joseph	350	373	362	326	320	298	287	266	234	393	159	67.9	95	31.9	43	12.3
841	Clarendon	445	439	455	456	417	393	416	338	339	325	-14	-4.1	-68	-17.3	-120	-27.0
842	Clark	574	553	545	537	531	532	556	515	499	500	1	0.2	-32	-6.0	-74	-12.9
843	Creston	406	378	380	398	361	353	327	301	246	290	44	17.9	-63	-17.8	-116	-28.6
844	Duniway	486	446	430	416	419	431	432	453	443	443	0	0.0	12	2.8	-43	-8.8
845	Edwards	228	228	216	201	218	212	202	189	199	closed	N/A		N/A		N/A	
847	Faubion	360	350	318	319	334	302	299	272	269	309	40	14.9	7	2.3	-51	-14.2
2413	Forest Park			184	226	284	334	377	407	456	517	61	13.4	183	54.8	N/A	
850	Glencoe	501	468	451	453	430	449	424	430	442	510	68	15.4	61	13.6	9	1.8
854	Grout	443	393	364	354	323	295	248	314	320	310	-10	-3.1	15	5.1	-133	-30.0
855	Hayhurst	379	360	294	288	259	271	259	212	353	358	5	1.4	87	32.1	-21	-5.5
857	Hollyrood	208	197	213	186	196	191	208	225	211	215	4	1.9	24	12.6	7	3.4
860	Humboldt	467	416	405	343	325	326	283	257	255	270	15	5.9	-56	-17.2	-197	-42.2

PORTLAND PUBLIC SCHOOLS

Enrollment Summary by Program Type, School and Year 1996-97 through 2005-06

Program Type												1-Year Trend (2005-06 - 2004-05)		5-Year Trend (2005-06 - 2001-02)		10-Year Trend (2005-06 - 1996-97)	
ODE#	School	1996-97	1997-98	1998-99	1999-00	2000-01	2001-02	2002-03	2003-04	2004-05	2005-06	#	%	#	%	#	%
861	Irvington	560	576	562	501	511	510	506	491	473	445	-28	-5.9	-65	-12.7	-115	-20.5
862	James John	641	643	625	618	592	564	551	514	481	458	-23	-4.8	-106	-18.8	-183	-28.5
864	Kelly	553	578	585	554	526	481	491	491	478	484	6	1.3	3	0.6	-69	-12.5
865	Kenton	289	245	240	250	249	233	252	225	166	closed	N/A		N/A		N/A	
866	King	789	793	760	732	733	710	583	544	525	491	-34	-6.5	-219	-30.8	-298	-37.8
868	Laurelhurst	550	557	536	512	526	526	561	561	558	581	23	4.1	55	10.5	31	5.6
869	Lee	381	422	402	391	409	408	419	387	333	309	-24	-7.2	-99	-24.3	-72	-18.9
870	Lent	341	376	390	397	401	400	383	335	355	366	11	3.1	-34	-8.5	25	7.3
871	Lewis	263	281	270	263	292	294	294	289	271	301	30	11.1	7	2.4	38	14.4
872	Llewellyn	367	360	362	330	336	311	315	302	298	301	3	1.0	-10	-3.2	-66	-18.0
873	Maplewood	320	290	304	295	305	309	279	288	285	315	30	10.5	6	1.9	-5	-1.6
1278	Markham	354	336	395	393	370	358	333	330	301	398	97	32.2	40	11.2	44	12.4
875	Marysville	436	397	416	397	400	395	394	367	349	336	-13	-3.7	-59	-14.9	-100	-22.9
876	Meek	247	249	260	242	198	198	219			closed	N/A		N/A		N/A	
879	Peninsula	321	301	293	331	323	328	333	293	271	254	-17	-6.3	-74	-22.6	-67	-20.9
883	Richmond	544	521	508	490	477	470	443	415	393	309	-84	-21.4	-161	-34.3	-235	-43.2
1299	Rieke	290	281	284	278	288	307	266	276	266	267	1	0.4	-40	-13.0	-23	-7.9
884	Rigler	568	576	544	506	525	492	474	489	466	442	-24	-5.2	-50	-10.2	-126	-22.2
885	Rose City Park	592	551	529	510	467	470	489	446	433	429	-4	-0.9	-41	-8.7	-163	-27.5
886	Sabin / Access	579	543	460	415	394	370	292	393	413	422	9	2.2	52	14.1	-157	-27.1
887	Scott	561	581	539	520	492	512	457	442	377	369	-8	-2.1	-143	-27.9	-192	-34.2
889	Sitton	449	417	423	404	436	421	371	359	338	300	-38	-11.2	-121	-28.7	-149	-33.2
890	Skyline	283	311	225	221	203	209	201	214	197	201	4	2.0	-8	-3.8	-82	-29.0
891	Smith	273	285	254	239	234	252	251	238	219	closed	N/A		N/A		N/A	
892	Stephenson	431	396	406	385	369	393	353	352	348	325	-23	-6.6	-68	-17.3	-106	-24.6
893	Sunnyside Environmental	341	331	313	319	325	334	276	203	459	443	-16	-3.5	109	32.6	102	29.9
895	Vernon	540	560	548	521	502	445	405	445	386	384	-2	-0.5	-61	-13.7	-156	-28.9
896	Vestal	310	284	258	243	241	227	367	344	322	294	-28	-8.7	67	29.5	-16	-5.2
900	Whitman	475	432	413	417	453	475	433	431	421	404	-17	-4.0	-71	-14.9	-71	-14.9
901	Wilcox	188	188	173	185	195	197				closed	N/A		N/A		N/A	
902	Woodlawn	519	538	582	517	547	518	460	443	409	531	122	29.8	13	2.5	12	2.3

PORTLAND PUBLIC SCHOOLS

Enrollment Summary by Program Type, School and Year 1996-97 through 2005-06

Program Type												1-Year Trend (2005-06 - 2004-05)		5-Year Trend (2005-06 - 2001-02)		10-Year Trend (2005-06 - 1996-97)	
ODE#	School	1996-97	1997-98	1998-99	1999-00	2000-01	2001-02	2002-03	2003-04	2004-05	2005-06	#	%	#	%	#	%
903	Woodmere	460	485	491	488	474	503	490	477	458	449	-9	-2.0	-54	-10.7	-11	-2.4
904	Woodstock	367	354	320	322	337	372	364	345	343	338	-5	-1.5	-34	-9.1	-29	-7.9
905	Youngson	222	220	187	197	185	177				closed	N/A		N/A		N/A	
Subtotal Elementary Schools		26,503	25,972	25,594	24,818	24,420	24,125	23,177	21,924	21,505	21,381	-124	-0.6	-2,744	-11.4	-5,122	-19.3
831	Beaumont	711	710	670	629	631	670	610	577	542	536	-6	-1.1	-134	-20.0	-175	-24.6
832	Binnsmead	709	709	646	647	699	735	769	687	687	680	-7	-1.0	-55	-7.5	-29	-4.1
848	Fernwood	600	567	556	591	575	608	632	644	582	466	-116	-19.9	-142	-23.4	-134	-22.3
849	George	588	561	571	555	549	558	546	467	473	403	-70	-14.8	-155	-27.8	-185	-31.5
852	Gray	489	537	523	507	508	526	533	497	520	496	-24	-4.6	-30	-5.7	7	1.4
853	Gregory Heights	832	781	769	781	812	821	740	718	630	691	61	9.7	-130	-15.8	-141	-16.9
858	Hosford	515	482	434	431	426	374	386	377	405	448	43	10.6	74	19.8	-67	-13.0
1277	Jackson	795	770	842	808	796	807	823	768	773	694	-79	-10.2	-113	-14.0	-101	-12.7
863	Kellogg	743	667	635	645	645	667	671	633	591	482	-109	-18.4	-185	-27.7	-261	-35.1
1243	Lane	726	770	658	657	678	696	652	638	592	553	-39	-6.6	-143	-20.5	-173	-23.8
877	Mt. Tabor	696	732	678	672	670	700	707	729	696	676	-20	-2.9	-24	-3.4	-20	-2.9
878	Ockley Green	661	587	519	486	408	490	475	427	385	318	-67	-17.4	-172	-35.1	-343	-51.9
881	Portsmouth	494	459	460	403	434	489	522	466	460	429	-31	-6.7	-60	-12.3	-65	-13.2
888	Sellwood	601	567	542	533	584	602	619	593	603	564	-39	-6.5	-38	-6.3	-37	-6.2
894	Tubman	581	518	508	565	541	517	463	373	294	273	-21	-7.1	-244	-47.2	-308	-53.0
898	West Sylvan	872	876	881	878	907	915	947	897	884	878	-6	-0.7	-37	-4.0	6	0.7
899	Whitaker	861	764	705	703	675	482	441	357	289	closed	N/A		N/A		N/A	
Subtotal Middle Schools		11,474	11,057	10,597	10,491	10,538	10,657	10,536	9,848	9,406	8,587	-819	-8.7	-2,070	-19.4	-2,887	-25.2
906	Benson	1,457	1,455	1,457	1,486	1,475	1,479	1,501	1,498	1,501	1,452	-49	-3.3	-27	-1.8	-5	-0.3
909	Cleveland	1,237	1,232	1,255	1,242	1,322	1,366	1,381	1,388	1,332	1,449	117	8.8	83	6.1	212	17.1
911	Franklin	1,580	1,564	1,547	1,464	1,488	1,470	1,460	1,528	1,547	1,404	-143	-9.2	-66	-4.5	-176	-11.1
912	Grant	1,692	1,767	1,907	1,912	1,794	1,798	1,848	1,835	1,848	1,815	-33	-1.8	17	0.9	123	7.3
913	Jefferson Campus	955	985	916	842	892	855	826	702	661	647	-14	-2.1	-208	-24.3	-308	-32.3
4160	School of Champions									347	299						
4161	School of Pride									314	348						
914	Lincoln	1,362	1,338	1,357	1,304	1,374	1,469	1,429	1,483	1,444	1,485	41	2.8	16	1.1	123	9.0

PORTLAND PUBLIC SCHOOLS

Enrollment Summary by Program Type, School and Year 1996-97 through 2005-06

Program Type												1-Year Trend (2005-06 - 2004-05)		5-Year Trend (2005-06 - 2001-02)		10-Year Trend (2005-06 - 1996-97)	
ODE#	School	1996-97	1997-98	1998-99	1999-00	2000-01	2001-02	2002-03	2003-04	2004-05	2005-06	#	%	#	%	#	%
915	Madison	1,300	1,243	1,239	1,236	1,241	1,204	1,261	1,194	1,063	983	-80	-7.5	-221	-18.4	-317	-24.4
917	Marshall Campus	1,284	1,277	1,348	1,332	1,278	1,222	1,102	949	906	955	49	5.4	-267	-21.8	-329	-25.6
4153	BizTech High									217	297						
4154	Pauling Academy of Integrated Sciences									200	282						
2175	Marshall Night Program									98	100						
4155	PDX Academy of International Studies									198							
4156	Renaissance Arts Academy									193	276						
918	Roosevelt Campus	1,324	1,205	1,118	1,155	1,131	1,141	989	825	850	778	-72	-8.5	-363	-31.8	-546	-41.2
4162	A.C.T. School									303	282						
4165	P.O.W.E.R. School									261	284						
4164	Spanish-English International									240	212						
4163	Two Rivers Community School									46							
922	Wilson	1,450	1,503	1,514	1,576	1,614	1,644	1,630	1,580	1,531	1,632	101	6.6	-12	-0.7	182	12.6
Subtotal High Schools		13,641	13,569	13,658	13,549	13,609	13,648	13,427	12,982	12,683	12,600	-83	-0.7	-1,048	-7.7	-1,041	-7.6
Subtotal Regular Schools & Programs		51,618	50,598	49,849	48,858	48,567	48,430	47,140	44,754	43,594	42,568	-1,026	-2.4	-5,862	-12.1	-9,050	-17.5
IB. FOCUS / ALTERNATIVE PROGRAMS																	
1361	Adventure School (at Markham)	90	85								closed	N/A		N/A		N/A	
1891	Counteract Returning	5									closed	N/A		N/A		N/A	
1363	da Vinci	140	221	312	318	316	319	320	327	350	380	30	8.6	61	19.1	240	171.4
2749	E.S.L. Assessment Center	55	53	40		17	32	9				N/A		N/A		N/A	
1808	E.S.L. Newcomer Site 2										closed	N/A		N/A		N/A	
1362	Environmental School	179	190	182	185	190	218	225	233			N/A		N/A		N/A	
2724	Head Start Early Childhood Education	580	569	574	566	606	527	620	539	528	625	97	18.4	98	18.6	45	7.8
	Hispanic Program (at Madison)	14									closed	N/A		N/A		N/A	
916	Metropolitan Learning Center	461	490	426	426	419	418	420	432	439	447	8	1.8	29	6.9	-14	-3.0
910	Monroe Program	63	63	46	48	41	34	20			closed	N/A		N/A		N/A	
4227	Native Montessori Program									23	22	-1	-4.3	N/A		N/A	
1332	Northeast Community School	93	98	57							closed	N/A		N/A		N/A	
	P.A.X.	10									closed	N/A		N/A		N/A	
1817	P.I.V.O.T.	22	27	19	13	2	12	15			closed	N/A		N/A		N/A	

PORTLAND PUBLIC SCHOOLS

Enrollment Summary by Program Type, School and Year 1996-97 through 2005-06

Program Type												1-Year Trend (2005-06 - 2004-05)		5-Year Trend (2005-06 - 2001-02)		10-Year Trend (2005-06 - 1996-97)	
ODE#	School	1996-97	1997-98	1998-99	1999-00	2000-01	2001-02	2002-03	2003-04	2004-05	2005-06	#	%	#	%	#	%
3167	Portland Evening H.S. at Benson	58	24						10	20	15	-5	-25.0	N/A		-43	-74.1
1818	Portland Night H.S. at Grant	118	113	99	90	83	82	100	98	76	91	15	19.7	9	11.0	-27	-22.9
	Roosevelt Evening		63								closed	N/A		N/A		N/A	
2402	Turnaround		82	44	49	42					closed	N/A		N/A		N/A	
920	Meek Professional Technical H.	201	190	198	205	192	160	188	158	146	117	-29	-19.9	-43	-26.9	-84	-41.8
1364	Winterhaven	99	139	143	165	159	169	167	254	296	339	43	14.5	170	100.6	240	242.4
Subtotal Focus / Alternative Programs		2,188	2,407	2,140	2,065	2,067	1,971	2,084	2,051	1,878	2,036	158	8.4	65	3.3	-152	-6.9
Subtotal Regular & Focus Programs		53,806	53,005	51,989	50,923	50,634	50,401	49,224	46,805	45,472	44,604	-868	-1.9	-5,797	-11.5	-9,202	-17.1
II. COMMUNITY-BASED PROGRAMS																	
1811	Albina Youth Opportunity School	57	54	69	41	49	29	41	50	43	51	8	18.6	22	75.9	-6	-10.5
1810	Christian Women Against Crime	12	20	26							closed	N/A		N/A		N/A	
1628	DePaul Center	21	19	27	21	24	23	21	18	18	21	3	16.7	-2	-8.7		0.0
2410	Genesis	37	32	27	28	27					closed	N/A		N/A		N/A	
1636	Greenhouse Alternative	48	75	51	45	31					closed	N/A		N/A		N/A	
1298	Helensview	35		20		27	23	19				N/A		N/A		N/A	
2409	LISTOS		30	71	108	102	94	64	62	57	91	34	59.6	-3	-3.2		N/A
2753	McCoy Academy	146	122	86							closed	N/A		N/A		N/A	
2754	McCoy East			7							closed	N/A		N/A		N/A	
2755	McCoy Middle School			10							closed	N/A		N/A		N/A	
2756	McCoy Southeast			23							closed	N/A		N/A		N/A	
2757	McCoy Teen Parent			12							closed	N/A		N/A		N/A	
1803	Mt. Scott Park Center for Learning	28	37	29	35	31	30	39	31	21	96	75	357.1	66	220.0	68	242.9
8002	Mt. Scott Park Center for Learning H.S.							59	58	62		N/A		N/A		N/A	
3012	New Avenues for Youth			15	48	36	35	36	48	20	20		0.0	-15	-42.9		N/A
3151	Open Meadow / CRUE				19	20	26	27	32	44	46	2	4.5	20	76.9		N/A
1821	Open Meadow H.S.	115	100	98	95	91	86	98	102	81	71	-10	-12.3	-15	-17.4	-44	-38.3
3021	Open Meadow M.S.			53	58	61	38	37	54	49	45	-4	-8.2	7	18.4		N/A
1802	Operation Easy	22	7								closed	N/A		N/A		N/A	
1865	Outfront House	8	8	8		6	9				closed	N/A		N/A		N/A	

PORTLAND PUBLIC SCHOOLS

Enrollment Summary by Program Type, School and Year 1996-97 through 2005-06

Program Type												1-Year Trend (2005-06 - 2004-05)		5-Year Trend (2005-06 - 2001-02)		10-Year Trend (2005-06 - 1996-97)	
ODE#	School	1996-97	1997-98	1998-99	1999-00	2000-01	2001-02	2002-03	2003-04	2004-05	2005-06	#	%	#	%	#	%
2761	P.C.C. Bilingual	274	206	206	248	129	184	205	187	181	235	54	29.8	51	27.7	-39	-14.2
2762	P.C.C. G.E.D.	146	191	212	234	120	110	93	127	91	114	23	25.3	4	3.6	-32	-21.9
2763	P.C.C. H.S. Completion	30	109	132	171	181	178	213	154	168	171	3	1.8	-7	-3.9	141	470.0
2764	P.C.C. Middle College			54	73	2					closed	N/A		N/A		N/A	
2752	P.I.C. Night School			27	36	18	21	16		8	13	5	62.5	-8	-38.1	N/A	
1816	P.O.I.C.	118	73	90	129	139	124	114	102	108	106	-2	-1.9	-18	-14.5	-12	-10.2
1658	Pacific Crest Community School						5	10	8	13	10	-3	-23.1	5	100.0	N/A	
3496	Pathfinders Academy				13	15	10	16	12	10	9	-1	-10.0	-1	-10.0	N/A	
1815	Portland International Community	73	50	53	35	39	39	33	33	23	30	7	30.4	-9	-23.1	-43	-58.9
1822	Portland Street Academy	99	76	50	46	52	42	33			closed	N/A		N/A		N/A	
1820	Quest Schools	106	94	88	97	87	78	74	73	77	65	-12	-15.6	-13	-16.7	-41	-38.7
1872	Springdale Job Corp			4							closed	N/A		N/A		N/A	
4084	Village Home Education Resource Center											N/A		N/A		N/A	
2774	Y.E.I. Teen Parent			43	31	37	33	33	41	26	31	5	19.2	-2	-6.1	N/A	
	Y.W.C.A. Homeless/Transitional	45	35								closed	N/A		N/A		N/A	
1875	Youth Employment Institute	99	98	29	46	26	52	52	56	27	43	16	59.3	-9	-17.3	-56	-56.6
1835	Youth Progress Association	47	20	19	24	39	10	20	22	19	20	1	5.3	10	100.0	-27	-57.4
1885	YouthBuilders	3	10	34	25	27	18	28		25	20	-5	-20.0	2	11.1	17	566.7
Subtotal Community-based Programs		1,569	1,466	1,673	1,706	1,416	1,297	1,381	1,270	1,171	1,308	137	11.7	11	0.8	-261	-16.6
III. SPECIAL EDUCATION PROGRAMS																	
2747	Autism Services	538	299	377	467	564	628	631				N/A		N/A		N/A	
3508	C.R.C. Transitional Classrooms							29	37			N/A		N/A		N/A	
1812	C.T.C. Jefferson H.S.	9	7	9	14	15	20	18	15	16	19	3	18.8	-1	-5.0	10	111.1
1813	C.T.C. P.S.U.	15	13	14	11	12	14	11	13	19	19		0.0	5	35.7	4	26.7
1814	C.T.C. Southeast	11	8	12	13	16	14	9	15	58	65	7	12.1	51	364.3	54	490.9
1653	Children's Psychiatric Day Treatment	2	2			2						N/A		N/A		N/A	
908	Clinton Street School	24	24	24	33	28	18	37	39	37	32	-5	-13.5	14	77.8	8	33.3
1801	Columbia Transitional School		7	4	7	6	7	37				N/A		N/A		N/A	
2748	Deaf/Hard of Hearing Services	325	179	182	174	171	172	170				N/A		N/A		N/A	
8004	E.S. B Program at Youngson							22	28			N/A		N/A		N/A	

PORTLAND PUBLIC SCHOOLS

Enrollment Summary by Program Type, School and Year 1996-97 through 2005-06

Program Type												1-Year Trend (2005-06 - 2004-05)		5-Year Trend (2005-06 - 2001-02)		10-Year Trend (2005-06 - 1996-97)	
ODE#	School	1996-97	1997-98	1998-99	1999-00	2000-01	2001-02	2002-03	2003-04	2004-05	2005-06	#	%	#	%	#	%
1631	Eastside Education Center	22	19	22	26	24	12					N/A		N/A		N/A	
944	Edgefield Center	5	1									N/A		N/A		N/A	
1800	Emanuel Hospital		1		1		2					N/A		N/A		N/A	
2776	Gately Day Treatment	7	8	7	6	10	7	4				N/A		N/A		N/A	
3450	Holladay Center	11	8	11	3	18	13					N/A		N/A		N/A	
2751	Home Instruction	17	16	40	30	26			3	1	2	1	100.0	N/A		-15	-88.2
907	John's Landing School	35	31	31	25	12	21	22	11	23	19	-4	-17.4	-2	-9.5	-16	-45.7
1645	Lents Education Center	11	13	8	10	8	8	3				N/A		N/A		N/A	
3491	M.E.S.D. Functional Living Skills	106	109	94	49	86	74	54				N/A		N/A		N/A	
8003	M.S. B Program at Foster							18	37			N/A		N/A		N/A	
1804	Marquis (formerly P.A.C.C.)	7	5	5	3	1						N/A		N/A		N/A	
2275	Morrison Breakthrough	12	28	11	10	18	17	21	18	18	10	-8	-44.4	-7	-41.2	-2	-16.7
1648	Morrison Counterpoint	6		1	9							N/A		N/A		N/A	
1279	Morrison Hand in Hand	22	20	16	20	14	20	19	19	22	21	-1	-4.5	1	5.0	-1	-4.5
2153	Multnomah Elementary/Middle School	14	23	28	24	38	52				closed	N/A		N/A		N/A	
1281	Nickerson Adolescent D.T.	13	12	12	11	18	13	10	16	13	16	3	23.1	3	23.1	3	23.1
1280	Nickerson Early Childhood Education	8	10	9	9		9	9				N/A		N/A		N/A	
3072	Northwest Academy					1						N/A		N/A		N/A	
1807	Oregon Health Sciences University		5									N/A		N/A		N/A	
1831	Oregon School for the Blind	6	3	4	3	3	1	1				N/A		N/A		N/A	
1832	Oregon School for the Deaf	9	10	8	9	6	1	1				N/A		N/A		N/A	
1819	Oregon State Hospital - Portland		4	3		4	2					N/A		N/A		N/A	
2760	Orthopedic Services	301	171	170	169	183	171	158				N/A		N/A		N/A	
880	Parry Center	43	42	42	44	32	23	42	43	39	39		0.0	16	69.6	-4	-9.3
2765	Part-time Home/Private	65	66	36	24	57	55	10	14	70	5	-65	-92.9	-50	-90.9	-60	-92.3
3506	Pioneer Schools						31	18	52	134	199	65	48.5	168	541.9	N/A	
2343	Portland Early Intervention Program	451	548	566	508	520	563	519				N/A		N/A		N/A	
2766	Private/Alternative Special Ed. Sites			1								N/A		N/A		N/A	
1805	Providence Hospital	46	44	42	33	31	26	23	14	17	8	-9	-52.9	-18	-69.2	-38	-82.6
1316	Riverbend			1			1					N/A		N/A		N/A	
923	Rosemont	50	41	47	44	66	53	51	50	52	42	-10	-19.2	-11	-20.8	-8	-16.0

PORTLAND PUBLIC SCHOOLS

Enrollment Summary by Program Type, School and Year 1996-97 through 2005-06

Program Type												1-Year Trend (2005-06 - 2004-05)		5-Year Trend (2005-06 - 2001-02)		10-Year Trend (2005-06 - 1996-97)	
ODE#	School	1996-97	1997-98	1998-99	1999-00	2000-01	2001-02	2002-03	2003-04	2004-05	2005-06	#	%	#	%	#	%
1871	S.E.R.P.	6	6	8	16	20	9	2				N/A		N/A		N/A	
1671	Serendipity	105	93	85	84	84	56	31				N/A		N/A		N/A	
1806	Shriners Hospital		4	1								N/A		N/A		N/A	
2769	Special Education Out-of-State		1	1								N/A		N/A		N/A	
9999	Special Education Transition	2						2				N/A		N/A		N/A	
1751	Thomas Edison H.S.	5	7	7	9		12	9				N/A		N/A		N/A	
2743	Tualatin Valley Day Treatment				1	1	4	3				N/A		N/A		N/A	
2771	Vision Services	240	122	140	135	132	136	132				N/A		N/A		N/A	
2772	Vocational Education Only	1	7	5		9	4		1			N/A		N/A		N/A	
897	Waverly Children's Home	45	43	27	28	39	32	18	9	18	9	-9	-50.0	-23	-71.9	-36	-80.0
921	White Shield	39	31	37	35	19	23	26	28	24	20	-4	-16.7	-3	-13.0	-19	-48.7
1689	Woodmont	13	20	18	16	14	5			1		N/A		N/A		N/A	
2773	Wynne Watts Day Treatment		1	3	4	3	1					N/A		N/A		N/A	
Subtotal Special Education Programs		2,647	2,112	2,169	2,117	2,311	2,330	2,170	462	562	525	-37	-6.6	-1,805	-77.5	-2,122	-80.2
IV. PUBLIC CHARTER PROGRAMS																	
4400	Arthur Academy										54	N/A		N/A		N/A	
3451	CM2's Opal School						25	42	50	71	81	10	14.1	56	224.0	N/A	
3991	Emerson Public Charter								98	97	121	24	24.7	N/A		N/A	
4215	Garden Laboratory Charter School									35	closed	N/A		N/A		N/A	
3244	McCoy Public Charter					66	97				closed	N/A		N/A		N/A	
4212	Self Enhancement Academy									49	92	43	87.8	N/A		N/A	
3616	Trillium Public Charter							152	198	199	223	24	12.1	N/A		N/A	
Subtotal Public Charter Programs		0	0	0	0	66	122	194	346	451	571	120	26.6	449	368.0	N/A	
Summary		58,022	56,583	55,831	54,746	54,427	54,150	52,969	48,883	47,656	47,008	-648	-1.4	-7,142	-13.2	-11,014	-19.0

Program type (i.e., elementary, middle, high, etc.) reflects the most recent administrative assignment. In recent years enrollment counts are compiled on or about the first of October. An enrolled student is defined as a student who attends one or more schools or programs within the District. Regardless of the number of schools or programs attended, each student is counted only once; the counts are unduplicated. Schools and programs that are no longer in operation are designated as 'closed'.

PORTLAND PUBLIC SCHOOLS

Enrollment Summary by Program Type, School and Year 1996-97 through 2005-06

Program Type												1-Year Trend (2005-06 - 2004-05)		5-Year Trend (2005-06 - 2001-02)		10-Year Trend (2005-06 - 1996-97)	
												#	%	#	%	#	%
ODE#	School	1996-97	1997-98	1998-99	1999-00	2000-01	2001-02	2002-03	2003-04	2004-05	2005-06	#	%	#	%	#	%

In the 2005-06 school year, two high schools located at the Marshall campus, Linus Pauling Academy and Portland Academy of International Studies, merged into one school renamed Pauling Academy of Integrated Sciences.

Applegate, Edwards, Kenton, Richmond and Smith Elementary Schools were closed at the end of the 2004-05 school year. Whitaker Middle school was closed as well. Most elementary school-aged students residing in the Applegate neighborhood area went on to attend Woodlawn. Similarly, students residing in the Edwards neighborhood area went on to attend Abernethy, those at Kenton to Chief Joseph; those at Richmond to Abernethy, Creston or Glencoe; and those at Smith went on to Capitol Hill, Maplewood or Markham. Most middle school students residing in the Whitaker neighborhood area went on to attend Tubman.

In the 2004-05 school year, the Environmental Middle School combined with Sunnyside Elementary and was renamed as Sunnyside Environmental School. In addition, the Odyssey program and its students (formerly at Chapman Elementary) moved to Hayhurst Elementary. The Family Cooperative program (formerly at Sunnyside) moved to Bridger Elementary.

As of the 2003-04 school year, enrollment summaries no longer include the following programs: Hospital Programs (Emanuel, Oregon Health Science University, Oregon State and Shriners Hospitals); M.E.S.D. Functional Living Skills; Portland Early Intervention Program (PeiP) and Columbia Regional Programs (Autism, Deaf and Hard of Hearing, Orthopedic and Vision Services). Administration of the Hospital Programs, Functional Living Skills and PeiP was transferred to Multnomah Education Service District (M.E.S.D.). Historically, enrollments reported for Columbia Regional Programs represent non-District students served by PPS staff on a part-time basis. For purposes of State reporting, membership (i.e., enrollment) for Columbia Regional Program students is reported by the resident District.

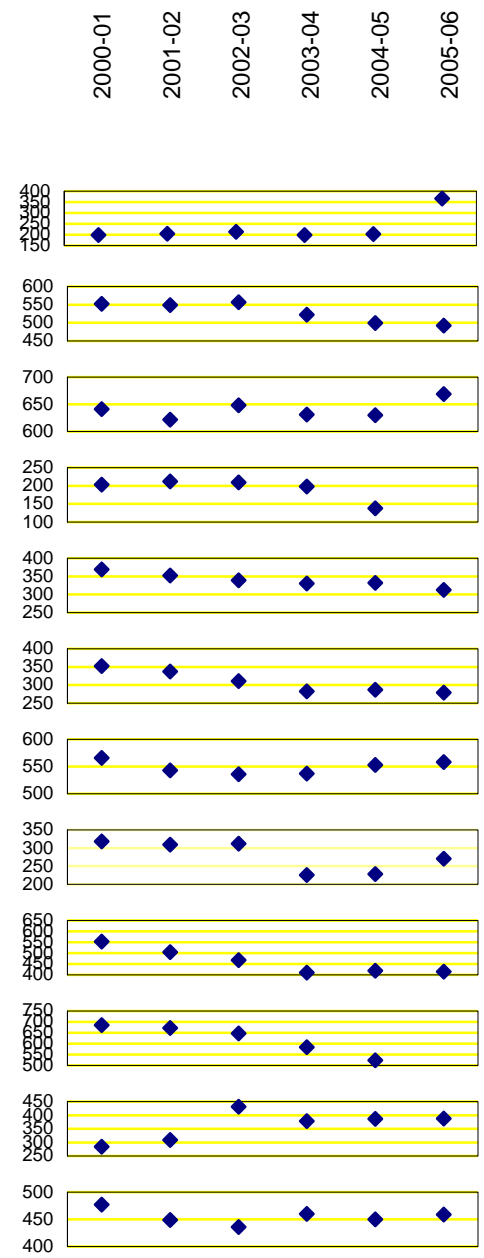
Brooklyn and Meek Elementary Schools were closed at the end of the 2002-03 school year. Most students residing in the Brooklyn neighborhood area went on to attend Grout Elementary, while those residing in the Meek neighborhood area attended Vernon Elementary. Similarly, Wilcox and Youngson Elementary Schools were closed at the end of the 2001-02 school year. Most students residing in the Wilcox neighborhood area went on to attend Vestal Elementary, while those residing in the Youngson neighborhood area attended Bridger Elementary.

Pioneer Schools consist of elementary, middle and high school programs. It was formerly known as ES B Program at Youngson, MS B Program at Foster and HS B Program at Columbia. Enrollment counts for the 2005-06 were derived from the eSIS Report 28-State Reporting (OR), Fall Membership.

PORTLAND PUBLIC SCHOOLS
Enrollment Trends 2000-01 through 2005-06
by Program Type, School and Year (Grades PK through 12)

Program Type		Year						Enrollment Trends		
		2000-01	2001-02	2002-03	2003-04	2004-05	2005-06	St. Dev	1-Year Change	
ODE#	School							#	%	
IA. REGULAR SCHOOLS & PROGRAMS										
822	Abernethy	198	204	213	199	203	366	66.6	163	80.3
823	Ainsworth	552	549	557	522	499	492	28.4	-7	-1.4
824	Alameda	641	622	648	631	630	669	16.8	39	6.2
825	Applegate	203	212	209	198	138		N/A	N/A	N/A
826	Arleta	369	352	339	330	332	313	19.4	-19	-5.7
827	Astor	352	337	311	283	287	279	30.6	-8	-2.8
828	Atkinson	566	543	536	537	553	558	12.1	5	0.9
829	Ball	318	309	312	226	228	271	42.3	43	18.9
830	Beach	553	504	468	411	419	414	58.0	-5	-1.2
833	Boise-Eliot	685	672	647	584	523	461	89.4	-62	-11.9
834	Bridger	284	309	431	378	387	388	55.1	1	0.3
835	Bridlemile	477	449	436	460	450	459	13.8	9	2.0

Student Enrollment



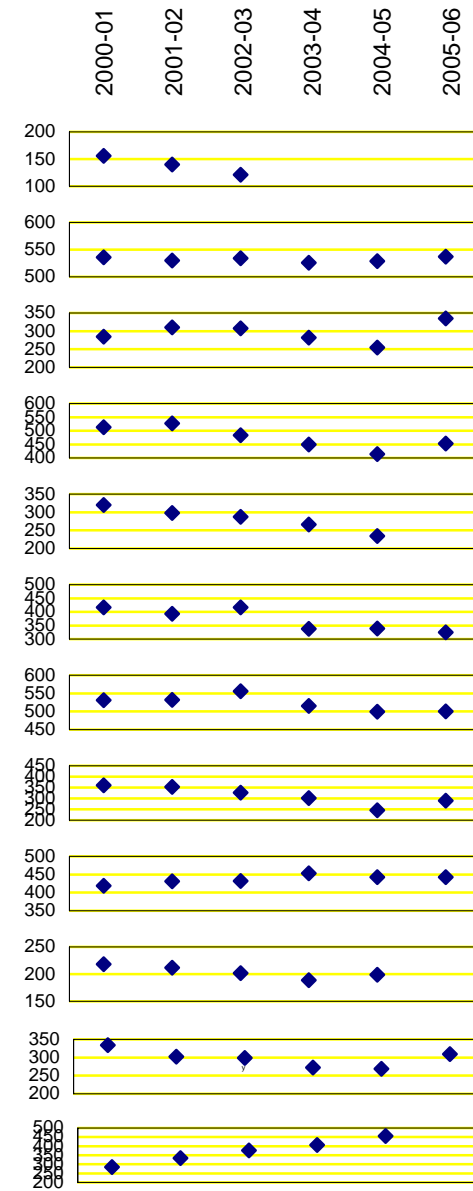
PORTLAND PUBLIC SCHOOLS

Enrollment Trends 2000-01 through 2005-06

by Program Type, School and Year (Grades PK through 12)

Program Type		Year						Enrollment Trends		
		2000-01	2001-02	2002-03	2003-04	2004-05	2005-06	St. Dev	1-Year Change	
ODE#	School							#	%	
836	Brooklyn	156	140	121				N/A	N/A	N/A
837	Buckman	536	530	534	526	529	537	4.3	8	1.5
838	Capitol Hill	285	310	308	282	255	335	27.8	80	31.4
839	Chapman	513	527	484	449	414	453	42.6	39	9.4
840	Chief Joseph	320	298	287	266	234	393	54.3	159	67.9
841	Clarendon	417	393	416	338	339	325	42.1	-14	-4.1
842	Clark	531	532	556	515	499	500	21.9	1	0.2
843	Creston	361	353	327	301	246	290	43.0	44	17.9
844	Duniway	419	431	432	453	443	443	11.9	0	0.0
845	Edwards	218	212	202	189	199		N/A	N/A	N/A
847	Faubion	334	302	299	272	269	309	24.3	40	14.9
2413	Forest Park	284	334	377	407	456	517	83.8	61	13.4

Student Enrollment



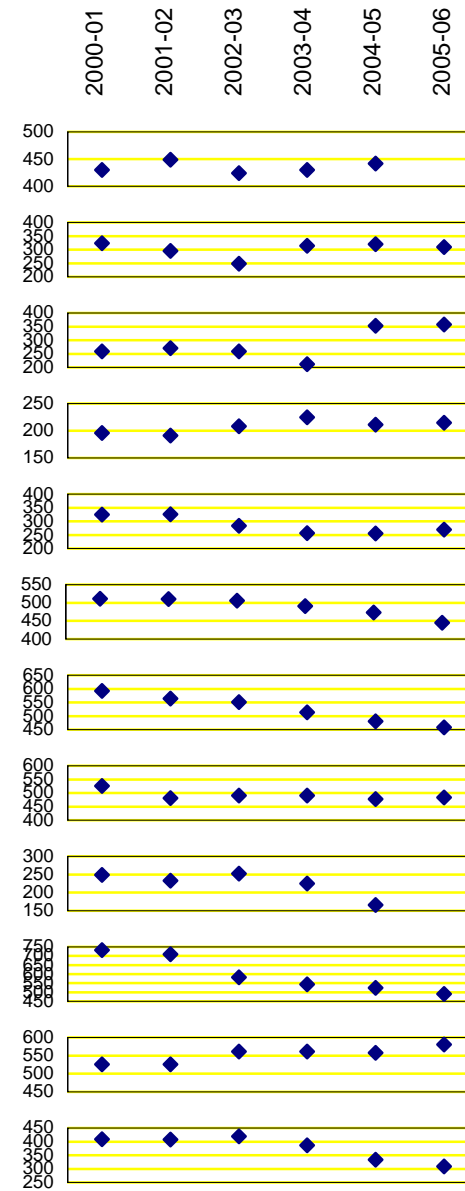
PORTLAND PUBLIC SCHOOLS

Enrollment Trends 2000-01 through 2005-06

by Program Type, School and Year (Grades PK through 12)

Program Type		Year						Enrollment Trends		
		2000-01	2001-02	2002-03	2003-04	2004-05	2005-06	St. Dev	1-Year Change	
ODE#	School							#	%	
850	Glencoe	430	449	424	430	442	510	31.9	68	15.4
854	Grout	323	295	248	314	320	310	28.1	-10	-3.1
855	Hayhurst	259	271	259	212	353	358	58.0	5	1.4
857	Hollyrood	196	191	208	225	211	215	12.5	4	1.9
860	Humboldt	325	326	283	257	255	270	32.2	15	5.9
861	Irvington	511	510	506	491	473	445	26.1	-28	-5.9
862	James John	592	564	551	514	481	458	51.4	-23	-4.8
864	Kelly	526	481	491	491	478	484	17.5	6	1.3
865	Kenton	249	233	252	225	166		N/A	N/A	N/A
866	King	733	710	583	544	525	491	100.7	-34	-6.5
868	Laurelhurst	526	526	561	561	558	581	21.9	23	4.1
869	Lee	409	408	419	387	333	309	45.6	-24	-7.2

Student Enrollment



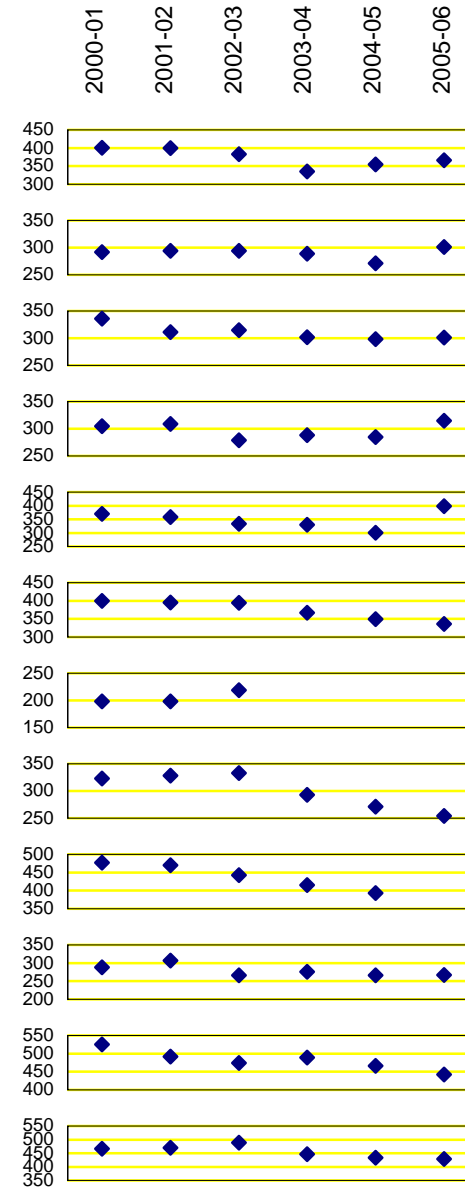
PORTLAND PUBLIC SCHOOLS

Enrollment Trends 2000-01 through 2005-06

by Program Type, School and Year (Grades PK through 12)

Program Type		Year						Enrollment Trends		
		2000-01	2001-02	2002-03	2003-04	2004-05	2005-06	St. Dev	1-Year Change	
ODE#	School							#	%	
870	Lent	401	400	383	335	355	366	26.2	11	3.1
871	Lewis	292	294	294	289	271	301	10.2	30	11.1
872	Llewellyn	336	311	315	302	298	301	14.1	3	1.0
873	Maplewood	305	309	279	288	285	315	14.7	30	10.5
1278	Markham	370	358	333	330	301	398	34.2	97	32.2
875	Marysville	400	395	394	367	349	336	27.0	-13	-3.7
876	Meek	198	198	219				N/A	N/A	N/A
879	Peninsula	323	328	333	293	271	254	32.9	-17	-6.3
883	Richmond	477	470	443	415	393	309	62.2	-84	-21.4
1299	Rieke	288	307	266	276	266	267	16.5	1	0.4
884	Rigler	525	492	474	489	466	442	28.0	-24	-5.2
885	Rose City Park	467	470	489	446	433	429	23.5	-4	-0.9

Student Enrollment



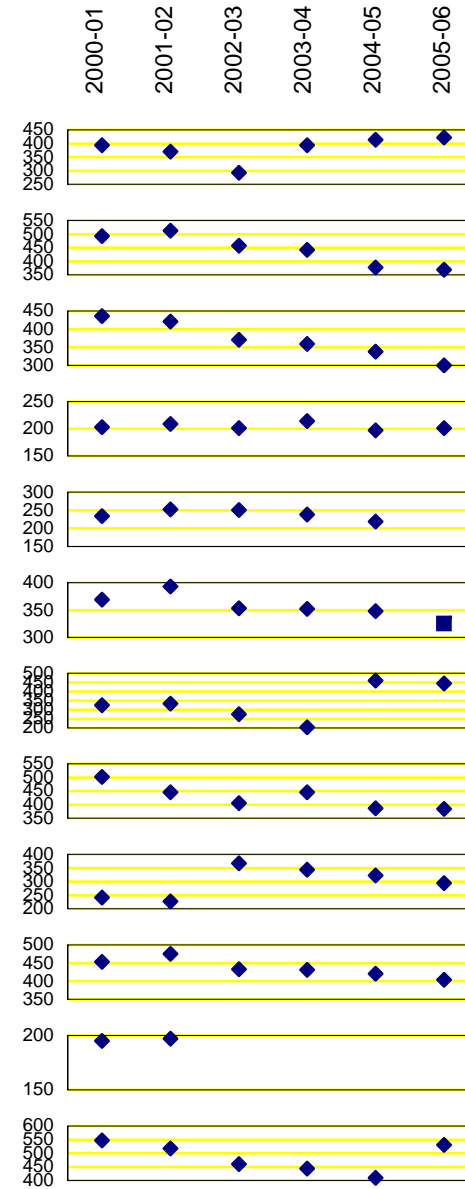
PORTLAND PUBLIC SCHOOLS

Enrollment Trends 2000-01 through 2005-06

by Program Type, School and Year (Grades PK through 12)

Program Type		Year						Enrollment Trends		
		2000-01	2001-02	2002-03	2003-04	2004-05	2005-06	St. Dev	1-Year Change	
ODE#	School								#	%
886	Sabin / Access	394	370	292	393	413	422	47.0	9	2.2
887	Scott	492	512	457	442	377	369	58.6	-8	-2.1
889	Sitton	436	421	371	359	338	300	51.0	-38	-11.2
890	Skyline	203	209	201	214	197	201	6.2	4	2.0
891	Smith	234	252	251	238	219		N/A	N/A	N/A
892	Stephenson	369	393	353	352	348	325	22.7	-23	-6.6
893	Sunnyside Environmental	325	334	276	203	459	443	97.9	-16	-3.5
895	Vernon	502	445	405	445	386	384	45.3	-2	-0.5
896	Vestal	241	227	367	344	322	294	56.1	-28	-8.7
900	Whitman	453	475	433	431	421	404	24.9	-17	-4.0
901	Wilcox	195	197					N/A	N/A	N/A
902	Woodlawn	547	518	460	443	409	531	55.2	122	29.8

Student Enrollment



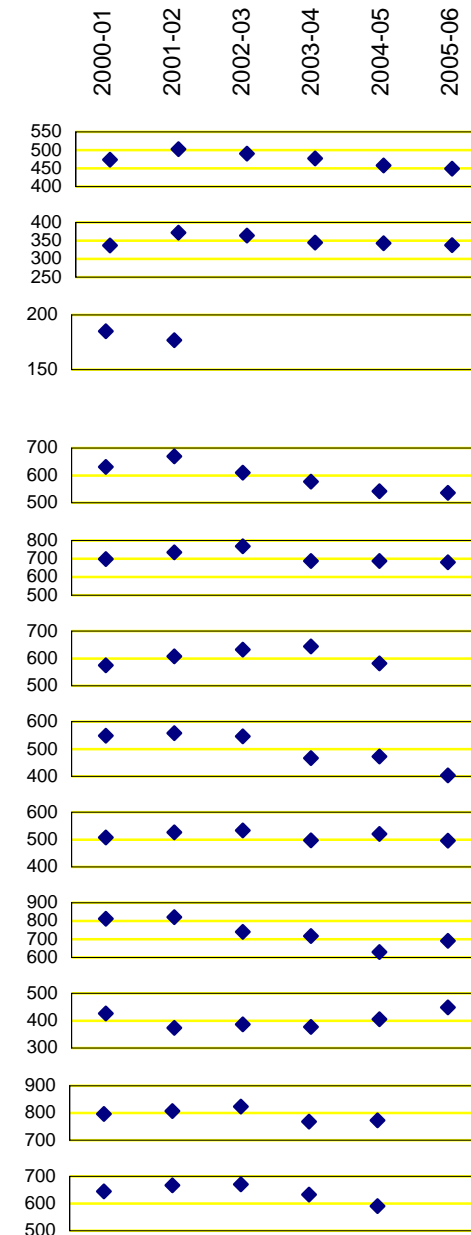
PORTLAND PUBLIC SCHOOLS

Enrollment Trends 2000-01 through 2005-06

by Program Type, School and Year (Grades PK through 12)

Program Type		Year						Enrollment Trends		
		2000-01	2001-02	2002-03	2003-04	2004-05	2005-06	St. Dev	1-Year Change	
ODE#	School								#	%
903	Woodmere	474	503	490	477	458	449	19.9	-9	-2.0
904	Woodstock	337	372	364	345	343	338	14.6	-5	-1.5
905	Youngson	185	177					N/A	N/A	N/A
Subtotal Elementary Schools		24,420	24,125	23,177	21,924	21,505	21,381	1,339.3	-124	-0.6
831	Beaumont	631	670	610	577	542	536	52.5	-6	-1.1
832	Binnsmead	699	735	769	687	687	680	35.2	-7	-1.0
848	Fernwood	575	608	632	644	582	466	64.0	-116	-19.9
849	George	549	558	546	467	473	403	61.8	-70	-14.8
852	Gray	508	526	533	497	520	496	15.4	-24	-4.6
853	Gregory Heights	812	821	740	718	630	691	72.9	61	9.7
858	Hosford	426	374	386	377	405	448	29.5	43	10.6
1277	Jackson	796	807	823	768	773	694	45.5	-79	-10.2
863	Kellogg	645	667	671	633	591	482	71.2	-109	-18.4

Student Enrollment



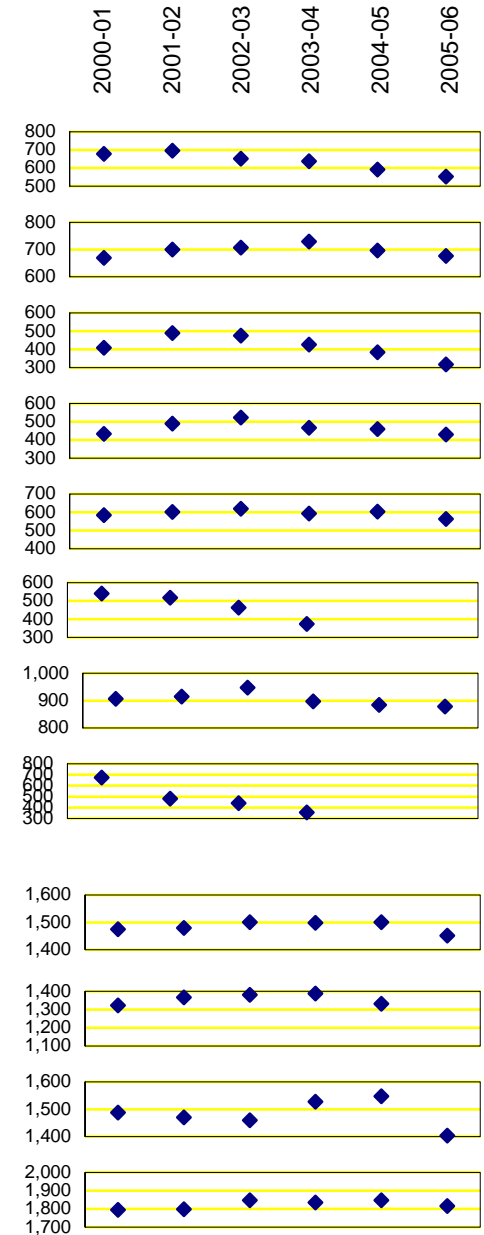
PORTLAND PUBLIC SCHOOLS

Enrollment Trends 2000-01 through 2005-06

by Program Type, School and Year (Grades PK through 12)

Program Type		Year						Enrollment Trends		
		2000-01	2001-02	2002-03	2003-04	2004-05	2005-06	St. Dev	1-Year Change	
ODE#	School							#	%	
1243	Lane	678	696	652	638	592	553	53.7	-39	-6.6
877	Mt. Tabor	670	700	707	729	696	676	21.5	-20	-2.9
878	Ockley Green	408	490	475	427	385	318	62.8	-67	-17.4
881	Portsmouth	434	489	522	466	460	429	34.9	-31	-6.7
888	Sellwood	584	602	619	593	603	564	18.8	-39	-6.5
894	Tubman	541	517	463	373	294	273	114.0	-21	-7.1
898	West Sylvan	907	915	947	897	884	878	24.9	-6	-0.7
899	Whitaker	675	482	441	357	289		N/A	N/A	N/A
Subtotal Middle Schools		10,538	10,657	10,536	9,848	9,406	8,587	818.6	-819	-8.7
906	Benson	1,475	1,479	1,501	1,498	1,501	1,452	19.5	-49	-3.3
909	Cleveland	1,322	1,366	1,381	1,388	1,332	1,449	45.6	117	8.8
911	Franklin	1,488	1,470	1,460	1,528	1,547	1,404	51.2	-143	-9.2
912	Grant	1,794	1,798	1,848	1,835	1,848	1,815	24.2	-33	-1.8

Student Enrollment



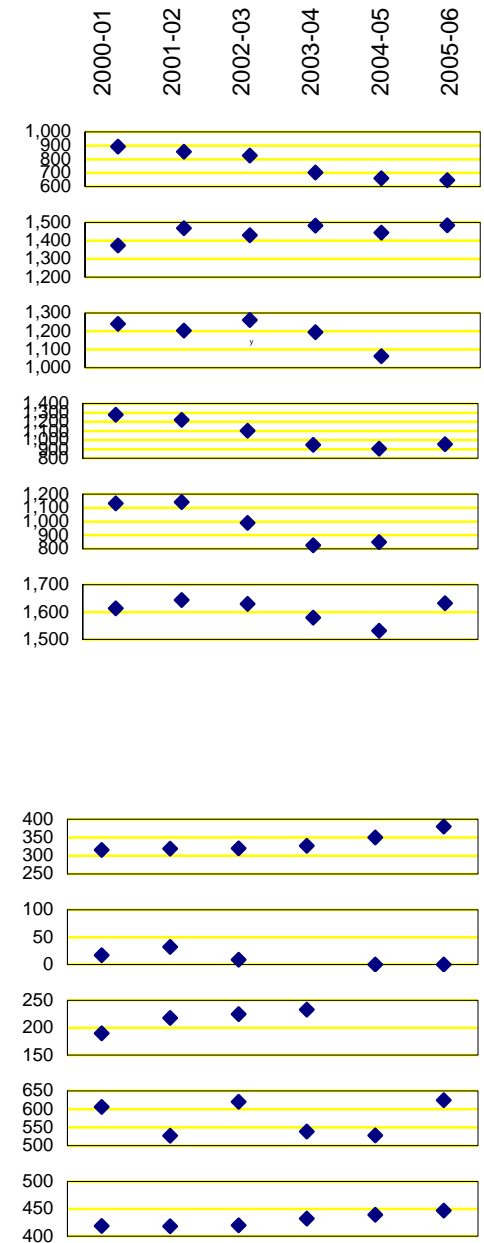
PORTLAND PUBLIC SCHOOLS

Enrollment Trends 2000-01 through 2005-06

by Program Type, School and Year (Grades PK through 12)

Program Type		Year					Enrollment Trends			
		2000-01	2001-02	2002-03	2003-04	2004-05	2005-06	St. Dev	1-Year Change #	%
ODE#	School									
913	Jefferson Campus	892	855	826	702	661	647	106.4	-14	-2.1
914	Lincoln	1,374	1,469	1,429	1,483	1,444	1,485	42.2	41	2.8
915	Madison	1,241	1,204	1,261	1,194	1,063	983	110.1	-80	-7.5
917	Marshall Campus	1,278	1,222	1,102	949	906	955	156.3	49	5.4
918	Roosevelt Campus	1,131	1,141	989	825	850	778	158.7	-72	-8.5
922	Wilson	1,614	1,644	1,630	1,580	1,531	1,632	42.6	101	6.6
Subtotal High Schools		13,609	13,648	13,427	12,982	12,683	12,600	465.6	-83	-0.7
Subtotal Regular Schools & Programs		48,567	48,430	47,140	44,754	43,594	42,568	2,559.9	-1,026	-2.4
IB. FOCUS / ALTERNATIVE PROGRAMS										
1363	da Vinci	316	319	320	327	350	380	25.1	30	8.6
2749	E.S.L. Assessment Center	17	32	9				N/A	N/A	N/A
1362	Environmental Middle School	190	218	225	233					
2724	Head Start Early Childhood Education	606	527	620	539	528	625	47.5	97	18.4
916	Metropolitan Learning Center	419	418	420	432	439	447	12.1	8	1.8

Student Enrollment



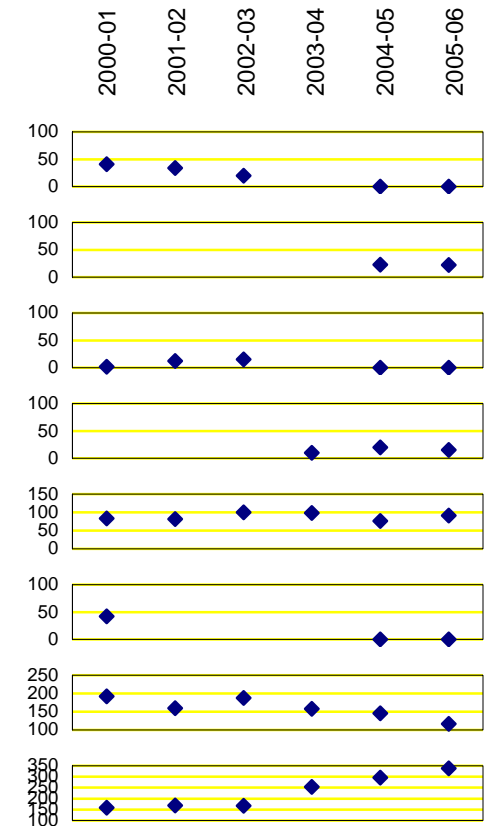
PORTLAND PUBLIC SCHOOLS

Enrollment Trends 2000-01 through 2005-06

by Program Type, School and Year (Grades PK through 12)

Program Type		Year					Enrollment Trends			
		2000-01	2001-02	2002-03	2003-04	2004-05	2005-06	St. Dev	1-Year Change #	%
ODE#	School									
910	Monroe Program	41	34	20				N/A	N/A	N/A
4227	Native Montessori Program					23	22	0.7	-1	-4.3
1817	P.I.V.O.T.	2	12	15				N/A	N/A	N/A
3167	Portland Evening H.S. at Benson				10	20	15	5.0	-5	-25.0
1818	Portland Night H.S. at Grant	83	82	100	98	76	91	9.6	15	19.7
2402	Turnaround	42						N/A	N/A	N/A
920	Meek Professional Technical H.	192	160	188	158	146	117	27.8	-29	-19.9
1364	Winterhaven (at Brooklyn)	159	169	167	254	296	339	76.9	43	14.5
Subtotal Focus / Alternative Programs		2,067	1,971	2,084	2,051	1,878	2,036	77.3	158	8.4
Subtotal Regular & Focus Programs		50,634	50,401	49,224	46,805	45,472	44,604	2,585.7	-868	-1.9
II. COMMUNITY-BASED PROGRAMS										
Subtotal Community-based Programs		1,416	1,297	1,381	1,270	1,171	1,308	86.4	137	11.7
III. SPECIAL EDUCATION PROGRAMS										
Subtotal Special Education Programs		2,311	2,330	2,170	462	562	525	962.8	-37	-6.6
IV. PUBLIC CHARTER PROGRAMS										
Subtotal Public Charter Programs		66	122	194	346	451	571	197.8	120	26.6

Student Enrollment



PORTLAND PUBLIC SCHOOLS

Enrollment Trends 2000-01 through 2005-06

by Program Type, School and Year (Grades PK through 12)

Student Enrollment

Program Type	Year						Enrollment Trends		
	2000-01	2001-02	2002-03	2003-04	2004-05	2005-06	St. Dev	1-Year Change	
ODE# School	2000-01	2001-02	2002-03	2003-04	2004-05	2005-06	St. Dev	#	%
Summary	54,427	54,150	52,969	48,883	47,656	47,008	3,376.6	-648	-1.4

2000-01
2001-02
2002-03
2003-04
2004-05
2005-06

Program type (i.e., elementary, middle, high, etc.) reflects the most recent administrative assignment. In recent years enrollment counts are compiled on or about the first of October. An enrolled student is defined as a student who attends one or more schools or programs within the District. Regardless of the number of schools or programs attended, each student is counted only once; the counts are unduplicated. Schools and programs that are no longer in operation are designated as 'closed'.

In the 2005-06 school year, two high schools located at the Marshall campus, Linus Pauling Academy and Portland Academy of International Studies, merged into one school renamed Pauling Academy of Integrated Sciences.

Applegate, Edwards, Kenton, Richmond and Smith Elementary Schools were closed at the end of the 2004-05 school year. Whitaker Middle school was closed as well. Most elementary school-aged students residing in the Applegate neighborhood area went on to attend Woodlawn. Similarly, students residing in the Edwards neighborhood area went on to attend Abernethy, those at Kenton to Chief Joseph; those at Richmond to Abernethy, Creston or Glencoe; and those at Smith went on to Capitol Hill, Maplewood or Markham. Most middle school students residing in the Whitaker neighborhood area went on to attend Tubman.

In the 2004-05 school year, the Environmental Middle School combined with Sunnyside Elementary and was renamed as Sunnyside Environmental School. In addition, the Odyssey program and its students (formerly at Chapman Elementary) moved to Hayhurst Elementary. The Family Cooperative program (formerly at Sunnyside) moved to Bridger Elementary.

As of the 2003-04 school year, enrollment summaries no longer include the following programs: Hospital Programs (Emanuel, Oregon Health Science University, Oregon State and Shriners Hospitals); Brooklyn and Meek Elementary Schools were closed at the end of the 2002-03 school year. Most students residing in the Brooklyn neighborhood area went on to attend Grout Elementary, while those residing in the Meek neighborhood area attended Vernon Elementary. Similarly, Wilcox and Youngson Elementary Schools were closed at the end of the 2001-02 school year. Most students residing in the Wilcox neighborhood area went on to attend Vestal Elementary, while those residing in the Youngson neighborhood area attended Bridger Elementary.

Enrollment counts for the 2005-06 were derived from the eSIS Report 28-State Reporting (OR), Fall Membership.

PORTLAND PUBLIC SCHOOLS

Enrollment Summary by Program Type, School and Grade Level, 2005-06

Program Type		Grade Level														Total	
ODE#	School	PK	KG	01	02	03	04	05	06	07	08	09	10	11	12	UN	
IA. REGULAR SCHOOLS & PROGRAMS																	
822	Abernethy		68	56	53	57	72	60									366
823	Ainsworth		75	73	81	77	106	80									492
824	Alameda		111	108	114	109	117	110									669
825	Applegate																closed
826	Arleta		57	40	45	53	69	49									313
827	Astor		46	54	43	40	44	52									279
828	Atkinson		93	109	100	93	88	75									558
829	Ball		53	50	44	47	41	36									271
830	Beach	20	83	66	61	62	62	49	11								414
833	Boise-Eliot	39	79	71	78	69	60	65									461
834	Bridger		54	69	57	54	71	83									388
835	Bridlemile		63	69	74	80	87	86									459
837	Buckman		77	102	84	90	97	87									537
838	Capitol Hill		57	65	48	55	58	52									335
839	Chapman		76	66	82	70	82	77									453
840	Chief Joseph	42	57	52	72	52	59	59									393
841	Clarendon		49	60	53	69	48	46									325
842	Clark		85	70	91	93	85	76									500
843	Creston		63	42	51	41	42	51									290
844	Duniway		68	69	74	72	79	81									443
845	Edwards																closed
847	Faubion		55	47	45	46	38	52	25	1							309
2413	Forest Park		80	91	92	84	79	91									517
850	Glencoe		91	98	85	85	75	76									510
854	Grout		57	44	63	54	53	39									310
855	Hayhurst		46	48	56	48	49	52	22	29	8						358
857	Hollyrood		51	48	57	59											215
860	Humboldt	20	33	48	35	33	44	36	21								270
861	Irvington		60	80	84	87	60	74									445
862	James John		84	81	71	77	72	73									458
864	Kelly		95	97	77	80	64	71									484
865	Kenton																closed

PORTLAND PUBLIC SCHOOLS

Enrollment Summary by Program Type, School and Grade Level, 2005-06

Program Type		Grade Level														Total	
ODE#	School	PK	KG	01	02	03	04	05	06	07	08	09	10	11	12		UN
866	King	39	61	68	64	72	77	73	37								491
868	Laurelhurst		78	87	88	83	125	120									581
869	Lee		51	41	52	65	47	53									309
870	Lent		79	55	54	61	49	68									366
871	Lewis		52	40	61	44	55	49									301
872	Llewellyn		44	47	62	51	45	52									301
873	Maplewood		53	55	47	54	45	61									315
1278	Markham		62	62	62	69	61	82									398
875	Marysville		49	47	68	57	53	62									336
879	Peninsula		44	46	40	37	55	32									254
883	Richmond		54	55	52	48	52	48									309
1299	Rieke		33	49	46	37	53	49									267
884	Rigler		86	68	64	61	77	86									442
885	Rose City Park		82	84	66	63	69	65									429
886	Sabin	21	60	59	58	60	54	58	14	25	13						422
887	Scott		65	72	61	58	51	62									369
889	Sitton		55	42	50	39	53	61									300
890	Skyline		34	24	36	45	29	33									201
891	Smith																closed
892	Stephenson		33	56	47	55	67	67									325
893	Sunnyside Environmental		50	47	28	29	24	31	79	70	85						443
895	Vernon	21	62	59	66	52	41	49	34								384
896	Vestal		54	42	46	51	47	54									294
900	Whitman		67	84	70	62	61	60									404
902	Woodlawn	38	89	77	69	60	80	70	48								531
903	Woodmere		69	73	84	81	80	62									449
904	Woodstock		58	60	63	51	54	52									338
Subtotal Elementary Schools		240	3,490	3,472	3,474	3,381	3,405	3,397	291	125	106	0	0	0	0	0	21,381
831	Beaumont								171	182	183						536
832	Binnsmead								228	225	227						680
848	Fernwood								117	162	187						466
849	George								115	151	137						403
852	Gray								155	188	153						496
853	Gregory Heights								225	225	241						691

PORTLAND PUBLIC SCHOOLS

Enrollment Summary by Program Type, School and Grade Level, 2005-06

Program Type		Grade Level														Total	
ODE#	School	PK	KG	01	02	03	04	05	06	07	08	09	10	11	12	UN	
858	Hosford								169	142	137						448
1277	Jackson								210	234	250						694
863	Kellogg								134	177	171						482
1243	Lane								187	178	188						553
877	Mt. Tabor								222	240	214						676
878	Ockley Green								79	119	120						318
881	Portsmouth								142	148	139						429
888	Sellwood								165	197	202						564
894	Tubman									124	149						273
898	West Sylvan								284	303	291						878
899	Whitaker																closed
Subtotal Middle Schools		0	0	0	0	0	0	0	2,603	2,995	2,989	0	0	0	0	0	8,587
906	Benson											401	356	354	341		1,452
909	Cleveland											416	370	363	300		1,449
911	Franklin											289	416	334	365		1,404
912	Grant											425	504	445	441		1,815
913	Jefferson Campus											181	165	133	168		647
4160	School of Champions													132	167		299
4161	School of Pride											181	165	1	1		348
914	Lincoln											383	394	373	335		1,485
915	Madison											236	258	246	243		983
917	Marshall Campus											313	216	225	201		955
4153	BizTech High											109	68	77	43		297
4154	Pauling Academy of Integrated Sciences											96	66	76	44		282
2175	Marshall Night School												8	7	85		100
4155	Portland Academy of International Studies																0
4156	Renaissance Arts Academy											108	74	65	29		276
918	Roosevelt Campus											227	237	174	140		778
4162	A.C.T. School											76	78	69	59		282
4165	P.O.W.E.R. School											79	89	69	47		284
4164	Spanish-English International											72	70	36	34		212
4163	Two Rivers Community School																closed
922	Wilson										1	475	397	409	350		1,632

PORTLAND PUBLIC SCHOOLS

Enrollment Summary by Program Type, School and Grade Level, 2005-06

Program Type		Grade Level														Total	
ODE#	School	PK	KG	01	02	03	04	05	06	07	08	09	10	11	12	UN	
Subtotal High Schools		0	0	0	0	0	0	0	0	0	1	3,346	3,313	3,056	2,884	0	12,600
Subtotal Regular Schools & Programs		240	3,490	3,472	3,474	3,381	3,405	3,397	2,894	3,120	3,096	3,346	3,313	3,056	2,884	0	42,568
IB. FOCUS / ALTERNATIVE PROGRAMS																	
1363	da Vinci								126	127	127						380
2724	Head Start Early Childhood Education	625															625
916	Metropolitan Learning Center		25	26	25	27	26	26	53	47	56	36	43	35	22		447
4227	Native Montessori Program	9	13														22
3167	Portland Evening H.S. at Benson													3	12		15
1818	Portland Night H.S. at Grant												4	19	68		91
920	Meek Professional Technical H.												2	101	14		117
1364	Winterhaven		26	31	30	30	31	29	60	54	48						339
Subtotal Focus / Alternative Programs		634	64	57	55	57	57	55	239	228	231	36	49	158	116	0	2,036
Subtotal Regular & Focus Programs		874	3,554	3,529	3,529	3,438	3,462	3,452	3,133	3,348	3,327	3,382	3,362	3,214	3,000	0	44,604
II. COMMUNITY-BASED PROGRAMS																	
1811	Albina Youth Opportunity School										1	4	16	16	14		51
1628	DePaul Center											1	5	4	11		21
2409	LISTOS											21	60	9	1		91
1803	Mt. Scott Park Center for Learning								4	5	16	13	23	20	15		96
3012	New Avenues for Youth													4	16		20
3151	Open Meadow / CRUE											1	1	12	32		46
1821	Open Meadow H.S.											12	16	25	18		71
3021	Open Meadow M.S.							1	10	13	20	1					45
2761	P.C.C. Bilingual											54	65	55	61		235
2762	P.C.C. G.E.D.											11	17	42	44		114
2763	P.C.C. H.S. Completion											2	13	49	107		171
2752	P.I.C. Night School												13				13
1816	P.O.I.C.									1	2	9	28	25	41		106
1658	Pacific Crest Community School											2	3	2	3		10
3496	Pathfinders Academy												1	1	7		9
1815	Portland International Community											1	7	7	15		30
1820	Quest Schools											1	15	20	29		65

PORTLAND PUBLIC SCHOOLS

Enrollment Summary by Program Type, School and Grade Level, 2005-06

Program Type		Grade Level														Total	
ODE#	School	PK	KG	01	02	03	04	05	06	07	08	09	10	11	12	UN	
2774	Y.E.I. Teen Parent											2	5	11	13		31
1875	Youth Employment Institute											1	9	21	12		43
1835	Youth Progress Association													6	14		20
1885	YouthBuilders														20		20
Subtotal Community-based Programs		0	0	0	0	0	0	1	14	19	39	136	297	329	473	0	1,308
III. SPECIAL EDUCATION PROGRAMS																	
1812	C.T.C. Jefferson H.S.														19		19
1813	C.T.C. P.S.U.														19		19
1814	C.T.C. Southeast													1	64		65
908	Clinton Street School								2	2	1	2	5	4	16		32
2751	Home Instruction							1						1			2
907	John's Landing School										4	3	3	4	5		19
2275	Morrison Breakthrough												3	5	2		10
1279	Morrison Hand in Hand	11	7	3													21
1281	Nickerson Adolescent D.T.									2	2	1	5	4	2		16
880	Parry Center		3	1	3	2	2	3	4	9	4	3	4	1			39
2765	Part-time Home/Private		1	1				1		1					1		5
3506	Pioneer Schools		2	5	9	9	9	8	18	20	15	22	26	25	31		199
1805	Providence Hospital					2	1			1	1				3		8
923	Rosemont										3	3	12	16	8		42
897	Waverly Children's Home			3	1	1	2	1	1								9
921	White Shield									1		2	3	7	7		20
Subtotal Special Education Programs		11	13	13	13	14	14	14	25	36	30	36	61	68	177	0	525
IV. PUBLIC CHARTER PROGRAMS																	
4400	Arthur Academy		23	19	12												54
3451	CM2's Opal School	1	13	15	16	12	14	10									81
3991	Emerson Public Charter		20	23	22	20	27	9									121
4215	Garden Laboratory Charter School																closed
4212	Self Enhancement Academy								47	45							92
3616	Trillium Public Charter		20	19	20	21	20	19	14	10	24	16	14	13	13		223
Subtotal Public Charter Programs		1	76	76	70	53	61	38	61	55	24	16	14	13	13	0	571

PORTLAND PUBLIC SCHOOLS

Enrollment Summary by Program Type, School and Grade Level, 2005-06

Program Type		Grade Level														Total	
ODE#	School	PK	KG	01	02	03	04	05	06	07	08	09	10	11	12	UN	
Summary		886	3,643	3,618	3,612	3,505	3,537	3,505	3,233	3,458	3,420	3,570	3,734	3,624	3,663	0	47,008

Program type reflects most recent administrative assignment. Enrollment counts are compiled on or about the first of October. An enrolled student is defined as a student who attends one or more schools or programs within the District. Regardless of the number of schools or programs attended, each student is counted only once; the counts are unduplicated.

In the 2005-06 school year, two high schools located at the Marshall campus, Linus Pauling Academy and Portland Academy of International Studies, merged into one school renamed Pauling Academy of Integrated Sciences.

Applegate, Edwards, Kenton, Richmond and Smith Elementary Schools were closed at the end of the 2004-05 school year. Whitaker Middle school was closed as well. Most elementary school-aged students residing in the Applegate neighborhood area went on to attend Woodlawn. Similarly, students residing in the Edwards neighborhood area went on to attend Abernethy, those at Kenton to Chief Joseph; those at Richmond to Abernethy, Creston or Glencoe; and those at Smith went on to Capitol Hill, Maplewood or Markham. Most middle school students residing in the Whitaker neighborhood area went on to attend Tubman.

Pioneer Schools consist of elementary, middle and high school programs. It was formerly known as ES B Program at Youngson, MS B Program at Foster and HS B Program at Columbia. Enrollment counts for the 2005-06 were derived from the eSIS Report 28-State Reporting (OR), Fall Membership.

PORTLAND PUBLIC SCHOOLS

Enrollment Summary, October 2005: by Program Type, School and Ethnicity

HSAA	Type	ODE#	PPS#	School	Ethnicity												
					American Indian #	%	European American #	%	African American #	%	Asian American #	%	Hispanic American #	%	Unspecified #	%	Total #
IA. REGULAR SCHOOLS & PROGRAMS																	
1	1	822	131	Abernethy	11	3.01	305	83.33	9	2.46	27	7.38	9	2.46	5	1.37	366
5	1	823	132	Ainsworth	1	0.20	389	79.07	12	2.44	29	5.89	59	11.99	2	0.41	492
3	1	824	230	Alameda	8	1.20	535	79.97	61	9.12	44	6.58	18	2.69	3	0.45	669
2	1	826	232	Arleta	6	1.92	183	58.47	19	6.07	60	19.17	43	13.74	2	0.64	313
8	1	827	136	Astor	15	5.38	188	67.38	31	11.11	12	4.30	32	11.47	1	0.36	279
2	1	828	234	Atkinson	4	0.72	243	43.55	24	4.30	119	21.33	167	29.93	1	0.18	558
8	1	829	138	Ball	3	1.11	65	23.99	93	34.32	27	9.96	80	29.52	3	1.11	271
4	1	830	140	Beach	9	2.17	111	26.81	111	26.81	39	9.42	144	34.78	0		414
4	1	833	141	Boise-Eliot	5	1.08	98	21.21	280	60.61	13	2.81	64	13.85	2	0.43	462
7	1	834	238	Bridger	8	2.06	236	60.82	35	9.02	56	14.43	53	13.66	0		388
5	1	835	142	Bridlemile	3	0.65	379	82.57	19	4.14	17	3.70	32	6.97	9	1.96	459
1	1	837	143	Buckman	11	2.05	426	79.33	35	6.52	29	5.40	36	6.70	0		537
9	1	838	144	Capitol Hill	9	2.69	236	70.45	31	9.25	19	5.67	34	10.15	6	1.79	335
5	1	839	146	Chapman	16	3.53	350	77.26	27	5.96	33	7.28	22	4.86	5	1.10	453
4	1	840	148	Chief Joseph	6	1.53	216	54.96	70	17.81	47	11.96	52	13.23	2	0.51	393
8	1	841	150	Clarendon	5	1.54	59	18.15	54	16.62	23	7.08	184	56.62	0		325
7	1	842	240	Clark	10	1.99	215	42.74	66	13.12	138	27.44	70	13.92	4	0.80	503
2	1	843	243	Creston	11	3.79	145	50.00	30	10.34	61	21.03	38	13.10	5	1.72	290
1	1	844	244	Duniway	7	1.58	391	88.26	8	1.81	18	4.06	18	4.06	1	0.23	443
4	1	847	248	Faubion	7	2.27	91	29.45	135	43.69	22	7.12	53	17.15	1	0.32	309
5	1	2413	152	Forest Park	1	0.19	387	74.85	7	1.35	108	20.89	12	2.32	2	0.39	517
2	1	850	157	Glencoe	4	0.78	395	77.30	54	10.57	23	4.50	30	5.87	5	0.98	511
1	1	854	255	Grout	10	3.23	175	56.45	27	8.71	45	14.52	49	15.81	4	1.29	310
9	1	855	160	Hayhurst	8	2.23	251	69.92	29	8.08	22	6.13	45	12.53	4	1.11	359
3	1	857	256	Hollywood	2	0.93	188	87.44	7	3.26	11	5.12	7	3.26	0		215
4	1	860	164	Humboldt	5	1.85	24	8.89	177	65.56	4	1.48	59	21.85	1	0.37	270
3	1	861	259	Irvington	3	0.67	187	42.02	206	46.29	16	3.60	31	6.97	2	0.45	445
8	1	862	166	James John	19	4.15	186	40.61	44	9.61	42	9.17	165	36.03	2	0.44	458
7	1	864	258	Kelly	13	2.68	263	54.23	38	7.84	59	12.16	109	22.47	3	0.62	485
4	1	866	262	King	6	1.22	34	6.92	341	69.45	20	4.07	87	17.72	3	0.61	491
3	1	868	265	Laurelhurst	6	1.03	457	78.66	37	6.37	32	5.51	41	7.06	8	1.38	581
6	1	869	264	Lee	7	2.27	112	36.25	40	12.94	80	25.89	68	22.01	2	0.65	309
7	1	870	266	Lent	5	1.35	157	42.32	40	10.78	59	15.90	106	28.57	4	1.08	371
1	1	871	267	Lewis	6	1.99	249	82.72	14	4.65	13	4.32	14	4.65	5	1.66	301
1	1	872	269	Llewellyn	9	2.99	223	74.09	23	7.64	10	3.32	14	4.65	22	7.31	301
9	1	873	172	Maplewood	6	1.90	261	82.86	14	4.44	14	4.44	20	6.35	0		315

PORTLAND PUBLIC SCHOOLS

Enrollment Summary, October 2005: by Program Type, School and Ethnicity

HSAA	Type	ODE#	PPS#	School	Ethnicity												
					American Indian #	%	European American #	%	African American #	%	Asian American #	%	Hispanic American #	%	Unspecified #	%	Total #
9	1	1278	170	Markham	2	0.50	237	59.55	45	11.31	29	7.29	51	12.81	34	8.54	398
7	1	875	268	Marysville	11	3.27	161	47.92	37	11.01	81	24.11	46	13.69	0		336
8	1	879	180	Peninsula	18	7.09	59	23.23	63	24.80	27	10.63	85	33.46	2	0.79	254
2	1	883	275	Richmond	5	1.62	164	53.07	20	6.47	99	32.04	4	1.29	17	5.50	309
9	1	1299	183	Rieke	2	0.75	220	82.09	8	2.99	33	12.31	5	1.87	0		268
6	1	884	276	Rigler	8	1.81	72	16.29	93	21.04	57	12.90	209	47.29	3	0.68	442
6	1	885	278	Rose City Park	14	3.26	278	64.65	34	7.91	72	16.74	31	7.21	1	0.23	430
3	1	886	279	Sabin	4	0.95	148	35.07	190	45.02	38	9.00	39	9.24	3	0.71	422
6	1	887	282	Scott	6	1.62	146	39.46	65	17.57	51	13.78	99	26.76	3	0.81	370
8	1	889	184	Sitton	12	4.00	98	32.67	70	23.33	29	9.67	89	29.67	2	0.67	300
5	1	890	186	Skyline	3	1.49	168	83.58	1	0.50	20	9.95	9	4.48	0		201
9	1	892	190	Stephenson	3	0.92	295	90.77	3	0.92	16	4.92	6	1.85	2	0.62	325
2	1	893	191	Sunnyside Environmental	8	1.81	357	80.59	33	7.45	20	4.51	22	4.97	3	0.68	443
4	1	895	284	Vernon	6	1.56	37	9.61	231	60.00	22	5.71	87	22.60	2	0.52	385
6	1	896	286	Vestal	9	3.06	128	43.54	40	13.61	83	28.23	34	11.56	0		294
7	1	900	290	Whitman	16	3.95	173	42.72	30	7.41	68	16.79	116	28.64	2	0.49	405
4	1	902	294	Woodlawn	5	0.94	75	14.10	312	58.65	33	6.20	106	19.92	1	0.19	532
7	1	903	296	Woodmere	7	1.56	235	52.34	47	10.47	68	15.14	90	20.04	2	0.45	449
2	1	904	297	Woodstock	6	1.78	183	54.14	12	3.55	124	36.69	10	2.96	3	0.89	338
Subtotal Elementary Schools					410	1.92	11,644	54.41	3,582	16.74	2,361	11.03	3,203	14.97	199	0.93	21,399
3	2	831	235	Beaumont	6	1.12	240	44.78	218	40.67	42	7.84	30	5.60	0		536
7	2	832	236	Binnsmead	15	2.20	311	45.67	86	12.63	162	23.79	105	15.42	2	0.29	681
3	2	848	249	Fernwood	10	2.14	285	61.03	132	28.27	12	2.57	28	6.00	0		467
8	2	849	156	George	12	2.98	139	34.49	86	21.34	43	10.67	122	30.27	1	0.25	403
9	2	852	158	Gray	12	2.42	384	77.42	29	5.85	26	5.24	42	8.47	3	0.60	496
6	2	853	254	Gregory Heights	17	2.46	297	42.98	102	14.76	111	16.06	163	23.59	1	0.14	691
1	2	858	257	Hosford	6	1.34	270	60.27	32	7.14	57	12.72	81	18.08	2	0.45	448
9	2	1277	174	Jackson	10	1.44	534	76.95	45	6.48	54	7.78	49	7.06	2	0.29	694
2	2	863	261	Kellogg	20	4.13	242	50.00	49	10.12	118	24.38	55	11.36	0		484
7	2	1243	263	Lane	22	3.96	287	51.62	47	8.45	61	10.97	137	24.64	2	0.36	556
2	2	877	176	Mt. Tabor	5	0.74	503	74.41	54	7.99	77	11.39	34	5.03	3	0.44	676
4	2	878	178	Ockley Green	6	1.89	71	22.33	132	41.51	41	12.89	66	20.75	2	0.63	318
8	2	881	182	Portsmouth	18	4.19	148	34.42	101	23.49	42	9.77	120	27.91	1	0.23	430
1	2	888	283	Sellwood	12	2.13	466	82.62	17	3.01	32	5.67	32	5.67	5	0.89	564
4	2	894	199	Tubman	4	1.47	53	19.41	135	49.45	10	3.66	71	26.01	0		273
5	2	898	196	West Sylvan	8	0.91	708	80.64	32	3.64	83	9.45	43	4.90	4	0.46	878
Subtotal Middle Schools					183	2.13	4,938	57.45	1,297	15.09	971	11.30	1,178	13.71	28	0.33	8,595

PORTLAND PUBLIC SCHOOLS

Enrollment Summary, October 2005: by Program Type, School and Ethnicity

HSAA	Type	ODE#	PPS#	School	Ethnicity												
					American Indian #	%	European American #	%	African American #	%	Asian American #	%	Hispanic American #	%	Unspecified #	%	Total #
0	3	906	115	Benson	24	1.65	547	37.67	385	26.52	345	23.76	137	9.44	14	0.96	1,452
1	3	909	213	Cleveland	35	2.42	1,142	78.81	92	6.35	88	6.07	79	5.45	13	0.90	1,449
2	3	911	215	Franklin	39	2.78	917	65.31	96	6.84	209	14.89	136	9.69	7	0.50	1,404
3	3	912	217	Grant	29	1.60	1,192	65.67	420	23.14	100	5.51	68	3.75	6	0.33	1,815
4	3	913	118	Jefferson Campus	18	2.78	89	13.76	428	66.15	37	5.72	75	11.59	0		647
4	3	4160	118	School of Champions	8	2.68	40	13.38	197	65.89	21	7.02	33	11.04	0		299
4	3	4161	118	School of Pride	10	2.87	49	14.08	231	66.38	16	4.60	42	12.07	0		348
5	3	914	120	Lincoln	11	0.74	1,185	79.80	87	5.86	119	8.01	73	4.92	10	0.67	1,485
6	3	915	218	Madison	32	3.26	465	47.30	163	16.58	143	14.55	178	18.11	2	0.20	983
7	3	917	220	Marshall Campus	36	3.77	509	53.30	71	7.43	120	12.57	213	22.30	6	0.63	955
7	3	4153	220	BizTech High	7	2.36	162	54.55	23	7.74	48	16.16	57	19.19	0		297
7	3	4154	220	Linus Pauling Academy	17	6.03	149	52.84	15	5.32	46	16.31	51	18.09	4	1.42	282
0	4	2175		Marshall Night Program	1	1.00	36	36.00	8	8.00	7	7.00	46	46.00	2	2.00	100
7	3	4156	220	Renaissance Arts Academy	11	3.99	162	58.70	25	9.06	19	6.88	59	21.38	0		276
8	3	918	124	Roosevelt Campus	27	3.47	304	39.07	162	20.82	67	8.61	216	27.76	2	0.26	778
8	3	4162	124	A.C.T. School	9	3.19	152	53.90	39	13.83	37	13.12	45	15.96	0		282
8	3	4165	124	P.O.W.E.R. School	11	3.87	113	39.79	95	33.45	24	8.45	39	13.73	2	0.70	284
8	3	4164	124	Spanish-English International	7	3.30	39	18.40	28	13.21	6	2.83	132	62.26	0		212
9	3	922	126	Wilson	16	0.98	1,347	82.54	81	4.96	102	6.25	85	5.21	1	0.06	1,632
				Subtotal High Schools	267	2.12	7,697	61.09	1,985	15.75	1,330	10.56	1,260	10.00	61	0.48	12,600
				Subtotal Regular Schools & Programs	860	2.02	24,279	57.00	6,864	16.11	4,662	10.95	5,641	13.24	288	0.68	42,594
				IB. FOCUS / ALTERNATIVE PROGRAMS													
0	4	4054		Access													see Sabin
0	4	1363	373	da Vinci	11	2.89	277	72.89	52	13.68	23	6.05	14	3.68	3	0.79	380
0	4	1362	359	Environmental Middle School													see Sunnyside
0	4	2724	324	Head Start Early Childhood Education	15	2.40	122	19.52	123	19.68	91	14.56	253	40.48	21	3.36	625
0	4	920	313	Meek Professional Technical H.S.	5	4.27	45	38.46	45	38.46	8	6.84	14	11.97	0		117
0	4	916	154	Metropolitan Learning Center	8	1.79	366	81.88	26	5.82	12	2.68	21	4.70	14	3.13	447
0	4	4227		Native Montessori Program	21	95.45	0		0		1	4.55	0		0		22
0	4	3167	304	Portland Evening H.S. at Benson	0		4	26.67	1	6.67	2	13.33	0		8	53.33	15
0	4	1818	330	Portland Night H.S. at Grant	3	3.30	52	57.14	18	19.78	2	2.20	14	15.38	2	2.20	91
0	4	1364	375	Winterhaven (at Brooklyn)	7	2.06	247	72.86	9	2.65	23	6.78	15	4.42	38	11.21	339
				Subtotal Focus / Alternative Programs	70	3.44	1,113	54.67	274	13.46	162	7.96	331	16.26	86	4.22	2,036
				Subtotal Regular & Focus Programs	930	2.08	25,392	56.89	7,138	15.99	4,824	10.81	5,972	13.38	374	0.84	44,630

PORTLAND PUBLIC SCHOOLS

Enrollment Summary, October 2005: by Program Type, School and Ethnicity

HSAA	Type	ODE#	PPS#	School	Ethnicity												
					American Indian #	%	European American #	%	African American #	%	Asian American #	%	Hispanic American #	%	Unspecified #	%	Total #
II. COMMUNITY-BASED PROGRAMS																	
0	5	1811	316	Albina Youth Opportunity School	4	7.84	15	29.41	24	47.06	4	7.84	4	7.84	0	51	
0	5	1628	769	DePaul Center	0		13	61.90	3	14.29	0		5	23.81	0	21	
0	5	2409	381	LISTOS	1	1.10	2	2.20	2	2.20	0		86	94.51	0	91	
0	5	1803	764	Mt. Scott Park Center for Learning	3	3.13	78	81.25	7	7.29	0		8	8.33	0	96	
0	5	3012	791	New Avenues for Youth	0		12	60.00	4	20.00	2	10.00	1	5.00	1	5.00	
0	5	3151	384	Open Meadow / CRUE	0		29	63.04	13	28.26	2	4.35	2	4.35	0	46	
0	5	1821	742	Open Meadow H.S.	2	2.82	51	71.83	14	19.72	3	4.23	1	1.41	0	71	
0	5	3021	383	Open Meadow M.S.	2	4.44	34	75.56	7	15.56	1	2.22	1	2.22	0	45	
0	5	2761	778	P.C.C. Bilingual	0		57	24.26	16	6.81	37	15.74	125	53.19	0	235	
0	5	2762	779	P.C.C. G.E.D.	3	2.61	76	66.09	19	16.52	4	3.48	12	10.43	1	0.87	
0	5	2763	781	P.C.C. H.S. Completion	6	3.51	122	71.35	24	14.04	11	6.43	5	2.92	3	1.75	
0	5	2752	788	P.I.C. Night School	0		0		0		0		13	100.00	0	13	
0	5	1816	768	P.O.I.C.	4	3.77	17	16.04	50	47.17	9	8.49	26	24.53	0	106	
0	5	1658	388	Pacific Crest Community School	2	20.00	7	70.00	0		0		0		1	10.00	
0	5	3496	385	Pathfinders Academy	1	11.11	5	55.56	0		1	11.11	2	22.22	0	9	
0	5	1815	763	Portland International Community	0		3	10.00	5	16.67	4	13.33	18	60.00	0	30	
0	5	1820	765	Quest Schools	3	4.62	48	73.85	7	10.77	4	6.15	3	4.62	0	65	
0	5	2774	789	Y.E.I. Teen Parent	2	6.45	7	22.58	14	45.16	0		7	22.58	1	3.23	
0	5	1875	771	Youth Employment Institute	2	4.65	17	39.53	21	48.84	1	2.33	1	2.33	1	2.33	
0	5	1835	345	Youth Progress Association	1	5.00	12	60.00	1	5.00	1	5.00	5	25.00	0	20	
0	5	1885	363	YouthBuilders	1	5.00	6	30.00	8	40.00	3	15.00	2	10.00	0	20	
Subtotal Community-based Programs					37	2.83	611	46.68	239	18.26	87	6.65	327	24.98	8	0.61	1,309
III. SPECIAL EDUCATION PROGRAMS																	
0	6	1812	338	C.T.C. Jefferson H.S.	0		7	36.84	8	42.11	2	10.53	2	10.53	0	19	
0	6	1813	336	C.T.C. Marshall H.S.	1	5.26	14	73.68	2	10.53	1	5.26	1	5.26	0	19	
0	6	1814	337	C.T.C. Southeast	0		40	61.54	15	23.08	7	10.77	3	4.62	0	65	
0	6	908	302	Clinton Street School	1	3.13	23	71.88	4	12.50	0		4	12.50	0	32	
0	6	2751	303	Home Instruction	0		1	50.00	0		1	50.00	0		0	2	
0	6	907	301	John's Landing School	1	5.26	16	84.21	1	5.26	0		1	5.26	0	19	
0	6	2275	758	Morrison Breakthrough	1	10.00	4	40.00	1	10.00	0		4	40.00	0	10	
0	6	1279	955	Morrison Hand in Hand	2	9.52	12	57.14	5	23.81	0		2	9.52	0	21	
0	6	1281	323	Nickerson Adolescent D.T.	0		8	50.00	7	43.75	0		1	6.25	0	16	
0	6	880	307	Parry Center	0		31	79.49	3	7.69	0		5	12.82	0	39	
0	6	2765	349	Part-time Home/Private	0		4	80.00	0		0		0		1	20.00	
0	6	3506	391	Pioneer Schools	4	2.01	107	53.77	72	36.18	2	1.01	13	6.53	1	0.50	

PORTLAND PUBLIC SCHOOLS

Enrollment Summary, October 2005: by Program Type, School and Ethnicity

HSAA	Type	ODE#	PPS#	School	Ethnicity												
					American Indian #	%	European American #	%	African American #	%	Asian American #	%	Hispanic American #	%	Unspecified #	%	Total #
0	6	1805	319	Providence Hospital	0		7	87.50	0		0		1	12.50	0		8
0	6	923	651	Rosemont	2	4.76	31	73.81	1	2.38	1	2.38	7	16.67	0		42
0	6	897	314	Waverly Children's Home	0		7	77.78	2	22.22	0		0		0		9
0	6	921	315	White Shield	2	10.00	12	60.00	1	5.00	1	5.00	4	20.00	0		20
Subtotal Special Education Programs					14	2.67	324	61.71	122	23.24	15	2.86	48	9.14	2	0.38	525
IV. PUBLIC CHARTER PROGRAMS																	
0	7	3451	550	CM2's Opal School	3	3.70	57	70.37	11	13.58	2	2.47	3	3.70	5	6.17	81
0	7	3991		Emerson Public Charter	1	0.83	84	69.42	14	11.57	10	8.26	11	9.09	1	0.83	121
0	7	4212		Self Enhancement Academy	1	1.08	4	4.30	84	90.32	0		4	4.30	0		93
0	7	3616	551	Trillium Public Charter	6	2.69	159	71.30	30	13.45	7	3.14	13	5.83	8	3.59	223
0	57	4400		Arthur Academy	2	3.57	24	42.86	6	10.71	1	1.79	1	1.79	22	39.29	56
Subtotal Public Charter Programs					13	2.26	328	57.14	145	25.26	20	3.48	32	5.57	36	6.27	574
Summary					994	2.11	26,655	56.67	7,644	16.25	4,946	10.51	6,379	13.56	420	0.89	47,038

NOTE: Some students have reported multiple ethnicities.

PORTLAND PUBLIC SCHOOLS

Enrollment Summary by Program Type, School and Gender, 2005-06

Program Type		Gender				Total
		Female		Male		
		#	%	#	%	
ODE#	School					
IA. REGULAR SCHOOLS & PROGRAMS						
822	Abernethy	200	54.64%	166	45.36%	366
823	Ainsworth	261	53.05%	231	46.95%	492
824	Alameda	327	48.88%	342	51.12%	669
826	Arleta	142	45.37%	171	54.63%	313
827	Astor	144	51.61%	135	48.39%	279
828	Atkinson	296	53.05%	262	46.95%	558
829	Ball	131	48.34%	140	51.66%	271
830	Beach	201	48.55%	213	51.45%	414
833	Boise-Eliot	226	49.02%	235	50.98%	461
834	Bridger	195	50.26%	193	49.74%	388
835	Bridlemile	255	55.56%	204	44.44%	459
837	Buckman	308	57.36%	229	42.64%	537
838	Capitol Hill	177	52.84%	158	47.16%	335
839	Chapman	216	47.68%	237	52.32%	453
840	Chief Joseph	196	49.87%	197	50.13%	393
841	Clarendon	156	48.00%	169	52.00%	325
842	Clark	244	48.80%	256	51.20%	500
843	Creston	135	46.55%	155	53.45%	290
844	Duniway	229	51.69%	214	48.31%	443
847	Faubion	164	53.07%	145	46.93%	309
2413	Forest Park	248	47.97%	269	52.03%	517
850	Glencoe	240	47.06%	270	52.94%	510
854	Grout	157	50.65%	153	49.35%	310
855	Hayhurst	181	50.56%	177	49.44%	358
857	Hollyrood	120	55.81%	95	44.19%	215
860	Humboldt	126	46.67%	144	53.33%	270
861	Irvington	208	46.74%	237	53.26%	445
862	James John	225	49.13%	233	50.87%	458
864	Kelly	253	52.27%	231	47.73%	484
866	King	256	52.14%	235	47.86%	491
868	Laurelhurst	319	54.91%	262	45.09%	581
869	Lee	140	45.31%	169	54.69%	309
870	Lent	182	49.73%	184	50.27%	366
871	Lewis	154	51.16%	147	48.84%	301
872	Llewellyn	151	50.17%	150	49.83%	301
873	Maplewood	155	49.21%	160	50.79%	315
1278	Markham	190	47.74%	208	52.26%	398
875	Marysville	164	48.81%	172	51.19%	336
879	Peninsula	123	48.43%	131	51.57%	254
883	Richmond	156	50.49%	153	49.51%	309
1299	Rieke	146	54.68%	121	45.32%	267

PORTLAND PUBLIC SCHOOLS

Enrollment Summary by Program Type, School and Gender, 2005-06

Program Type		Gender				
		Female		Male		Total
		#	%	#	%	
ODE#	School					
884	Rigler	216	48.87%	226	51.13%	442
885	Rose City Park	192	44.76%	237	55.24%	429
886	Sabin	202	47.87%	220	52.13%	422
887	Scott	174	47.15%	195	52.85%	369
889	Sitton	136	45.33%	164	54.67%	300
890	Skyline	114	56.72%	87	43.28%	201
892	Stephenson	151	46.46%	174	53.54%	325
893	Sunnyside Environmental	236	53.27%	207	46.73%	443
895	Vernon	197	51.30%	187	48.70%	384
896	Vestal	142	48.30%	152	51.70%	294
900	Whitman	187	46.29%	217	53.71%	404
902	Woodlawn	269	50.66%	262	49.34%	531
903	Woodmere	217	48.33%	232	51.67%	449
904	Woodstock	181	53.55%	157	46.45%	338
Subtotal Elementary Schools		10,711	50.10%	10,670	49.90%	21,381
831	Beaumont	250	46.64%	286	53.36%	536
832	Binnsmead	319	46.91%	361	53.09%	680
848	Fernwood	222	47.64%	244	52.36%	466
849	George	188	46.65%	215	53.35%	403
852	Gray	239	48.19%	257	51.81%	496
853	Gregory Heights	355	51.37%	336	48.63%	691
858	Hosford	238	53.13%	210	46.88%	448
1277	Jackson	344	49.57%	350	50.43%	694
863	Kellogg	217	45.02%	265	54.98%	482
1243	Lane	260	47.02%	293	52.98%	553
877	Mt. Tabor	318	47.04%	358	52.96%	676
878	Ockley Green	139	43.71%	179	56.29%	318
881	Portsmouth	203	47.32%	226	52.68%	429
888	Sellwood	278	49.29%	286	50.71%	564
894	Tubman	135	49.45%	138	50.55%	273
898	West Sylvan	454	51.71%	424	48.29%	878
Subtotal Middle Schools		4,159	48.43%	4,428	51.57%	8,587
906	Benson	595	40.98%	857	59.02%	1,452
909	Cleveland	721	49.76%	728	50.24%	1,449
911	Franklin	673	47.93%	731	52.07%	1,404
912	Grant	903	49.75%	912	50.25%	1,815
913	Jefferson Campus	334	51.62%	313	48.38%	647
4160	School of Champions	156	52.17%	143	47.83%	299
4161	School of Pride	178	51.15%	170	48.85%	348
914	Lincoln	726	48.89%	759	51.11%	1,485
915	Madison	495	50.36%	488	49.64%	983
917	Marshall Campus	441	46.18%	514	53.82%	955

PORTLAND PUBLIC SCHOOLS

Enrollment Summary by Program Type, School and Gender, 2005-06

		Gender				
Program Type		Female		Male		Total
ODE#	School	#	%	#	%	
4153	BizTech High	107	36.03%	190	63.97%	297
4154	Pauling Academy of Integrated Sciences	134	47.52%	148	52.48%	282
2175	Marshall Night School	49	49.00%	51	51.00%	100
4156	Renaissance Arts Academy	151	54.71%	125	45.29%	276
918	Roosevelt Campus	400	51.41%	378	48.59%	778
4162	A.C.T. School	132	46.81%	150	53.19%	282
4165	P.O.W.E.R. School	159	55.99%	125	44.01%	284
4164	Spanish-English International	109	51.42%	103	48.58%	212
922	Wilson	764	46.81%	868	53.19%	1,632
Subtotal High Schools		6,052	48.03%	6,548	51.97%	12,600
Subtotal Regular Schools & Programs		20,922	49.15%	21,646	50.85%	42,568
IB. FOCUS / ALTERNATIVE PROGRAMS						
1363	da Vinci	269	70.79%	111	29.21%	380
2724	Head Start Early Childhood Education	333	53.28%	292	46.72%	625
916	Metropolitan Learning Center	249	55.70%	198	44.30%	447
4227	Native Montessori Program	14	63.64%	8	36.36%	22
3167	Portland Evening H.S. at Benson	4	26.67%	11	73.33%	15
1818	Portland Night H.S. at Grant	51	56.04%	40	43.96%	91
920	Meek Professional Technical H.	44	37.61%	73	62.39%	117
1364	Winterhaven	146	43.07%	193	56.93%	339
Subtotal Focus / Alternative Programs		1,110	54.52%	926	45.48%	2,036
Subtotal Regular & Focus Programs		22,032	49.39%	22,572	50.61%	44,604
II. COMMUNITY-BASED PROGRAMS						
1811	Albina Youth Opportunity School	22	43.14%	29	56.86%	51
1628	DePaul Center	7	33.33%	14	66.67%	21
2409	LISTOS	39	42.86%	52	57.14%	91
1803	Mt. Scott Park Center for Learning	43	44.79%	53	55.21%	96
3012	New Avenues for Youth	12	60.00%	8	40.00%	20
3151	Open Meadow / CRUE	14	30.43%	32	69.57%	46
1821	Open Meadow H.S.	32	45.07%	39	54.93%	71
3021	Open Meadow M.S.	21	46.67%	24	53.33%	45
2761	P.C.C. Bilingual	77	32.77%	158	67.23%	235
2762	P.C.C. G.E.D.	61	53.51%	53	46.49%	114
2763	P.C.C. H.S. Completion	88	51.46%	83	48.54%	171
2752	P.I.C. Night School	2	15.38%	11	84.62%	13
1816	P.O.I.C.	45	42.45%	61	57.55%	106
1658	Pacific Crest Community School	6	60.00%	4	40.00%	10
3496	Pathfinders Academy	9	100.00%		0.00%	9
1815	Portland International Community	11	36.67%	19	63.33%	30
1820	Quest Schools	23	35.38%	42	64.62%	65

PORTLAND PUBLIC SCHOOLS

Enrollment Summary by Program Type, School and Gender, 2005-06

Program Type		Gender				
		Female		Male		Total
		#	%	#	%	
ODE#	School					
2774	Y.E.I. Teen Parent	29	93.55%	2	6.45%	31
1875	Youth Employment Institute	20	46.51%	23	53.49%	43
1835	Youth Progress Association	2	10.00%	18	90.00%	20
1885	YouthBuilders	9	45.00%	11	55.00%	20
Subtotal Community-based Programs		572	43.73%	736	56.27%	1,308
III. SPECIAL EDUCATION PROGRAMS						
1812	C.T.C. Jefferson H.S.	6	31.58%	13	68.42%	19
1813	C.T.C. P.S.U.	9	47.37%	10	52.63%	19
1814	C.T.C. Southeast	29	44.62%	36	55.38%	65
908	Clinton Street School	7	21.88%	25	78.13%	32
2751	Home Instruction	1	50.00%	1	50.00%	2
907	John's Landing School	12	63.16%	7	36.84%	19
2275	Morrison Breakthrough	1	10.00%	9	90.00%	10
1279	Morrison Hand in Hand	7	33.33%	14	66.67%	21
1281	Nickerson Adolescent D.T.	7	43.75%	9	56.25%	16
880	Parry Center	10	25.64%	29	74.36%	39
2765	Part-time Home/Private	3	60.00%	2	40.00%	5
3506	Pioneer Schools	46	23.12%	153	76.88%	199
1805	Providence Hospital	3	37.50%	5	62.50%	8
923	Rosemont	42	100.00%		0.00%	42
897	Waverly Children's Home	2	22.22%	7	77.78%	9
921	White Shield	20	100.00%		0.00%	20
Subtotal Special Education Programs		205	39.05%	320	60.95%	525
IV. PUBLIC CHARTER PROGRAMS						
4400	Arthur Academy	29	53.70%	25	46.30%	54
3451	CM2's Opal School	49	60.49%	32	39.51%	81
3991	Emerson Public Charter	69	57.02%	52	42.98%	121
4212	Self Enhancement Academy	41	44.57%	51	55.43%	92
3616	Trillium Public Charter	94	42.15%	129	57.85%	223
Subtotal Public Charter Programs		282	49.39%	289	50.61%	571
Summary		23,091	49.12%	23,917	50.88%	47,008

Program type reflects most recent administrative assignment. Enrollment counts are compiled on or about the first of October. An enrolled student is defined as a student who attends one or more schools or programs within the District. Regardless of the number of schools or programs attended, each student is counted only once; the counts are unduplicated.

In the 2005-06 school year, two high schools located at the Marshall campus, Linus Pauling Academy and Portland Academy of International Studies, merged into one school renamed Pauling Academy of Integrated Sciences.

PORTLAND PUBLIC SCHOOLS

Enrollment Summary by Program Type, School and Gender, 2005-06

Program Type		Gender				
		Female		Male		Total
		#	%	#	%	
ODE#	School	#	%	#	%	

Applegate, Edwards, Kenton, Richmond and Smith Elementary Schools were closed at the end of the 2004-05 school year. Whitaker Middle school was closed as well. Most elementary school-aged students residing in the Applegate neighborhood area went on to attend Woodlawn. Similarly, students residing in the Edwards neighborhood area went on to attend Abernethy, those at Kenton to Chief Joseph; those at Richmond to Abernethy, Creston or Glencoe; and those at Smith went on to Capitol Hill, Maplewood or Markham. Most middle school students residing in the Whitaker neighborhood area went on to attend Tubman.

Enrollment counts for the 2005-06 were derived from the eSIS Report 28-State Reporting (OR), Fall Membership.

Pioneer Schools consist of elementary, middle and high school programs. It was formerly known as ES B Program at Youngson, MS B Program at Foster and HS B Program at Columbia.

PORTLAND PUBLIC SCHOOLS
Enrollment Summary, October 2005 by Program Type

PROGRAMS		GRADE														
Type	Program Category	PK	KG	01	02	03	04	05	06	07	08	09	10	11	12	Total
1	Elementary Schools	240	3,490	3,472	3,474	3,381	3,405	3,397	291	125	106	0	0	0	0	21,381
2	Middle Schools	0	0	0	0	0	0	0	2,603	2,995	2,989	0	0	0	0	8,587
3	High Schools	0	0	0	0	0	0	0	0	0	1	3,346	3,313	3,056	2,884	12,600
4	FOCUS / ALTERNATIVE PROGRAMS	634	64	57	55	57	57	55	239	228	231	36	49	158	116	2,036
5	Community-based Alternatives	0	0	0	0	0	0	1	14	19	39	136	297	329	473	1,308
6	Special Education	11	13	13	13	14	14	14	25	36	30	36	61	68	177	525
7	Public Charter	1	76	76	70	53	61	38	61	55	24	16	14	13	13	571
	Total By Grade	886	3,643	3,618	3,612	3,505	3,537	3,505	3,233	3,458	3,420	3,570	3,734	3,624	3,663	47,008
	Total Overall	47,008														
	Total Regular Programs	42,568														
	Total Focus/Alternative Programs	2,036														
	Total Community Based Programs	1,308														
	Total Special Services	525														
	Total Public Charter Schools	571														