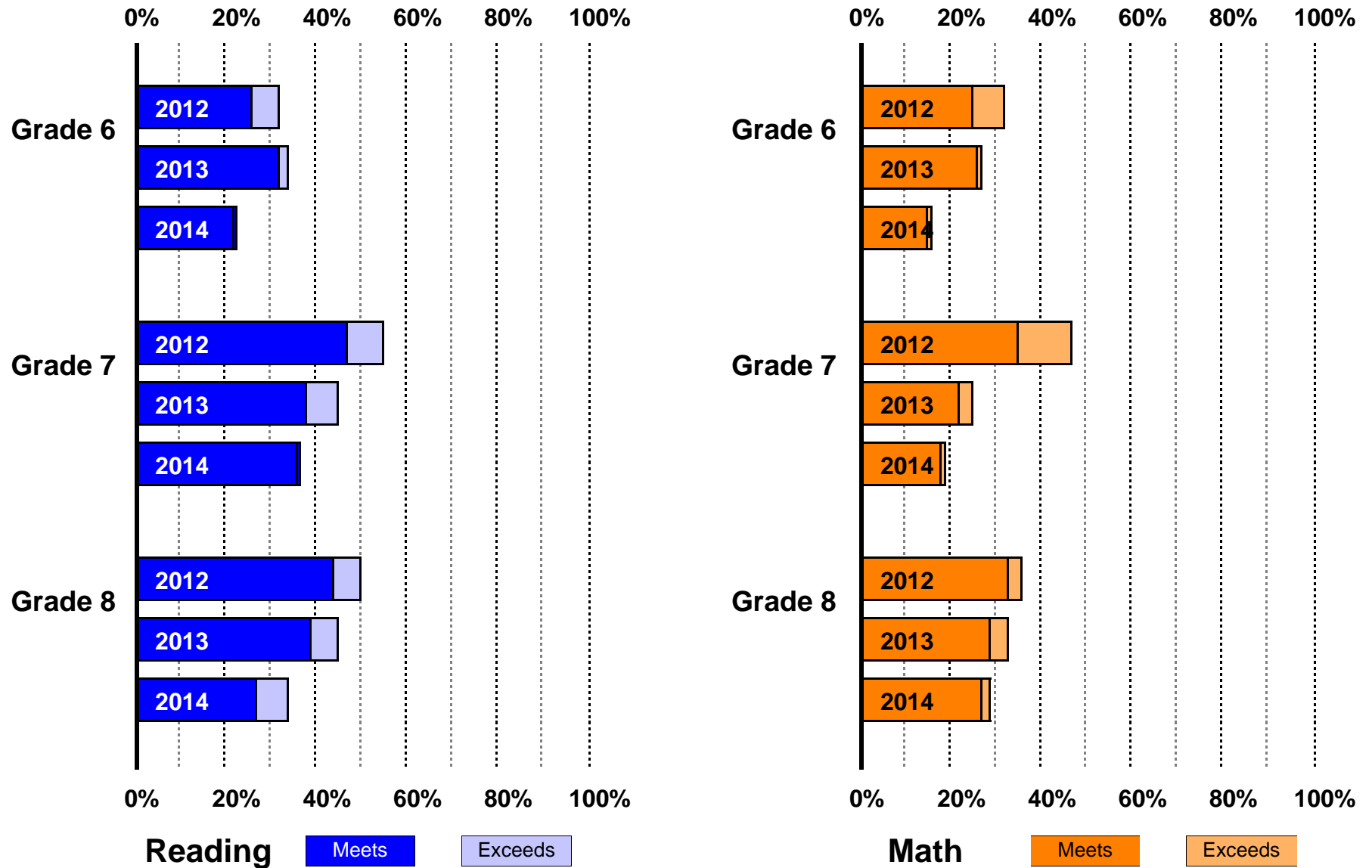




# 2014 Assessment Overview

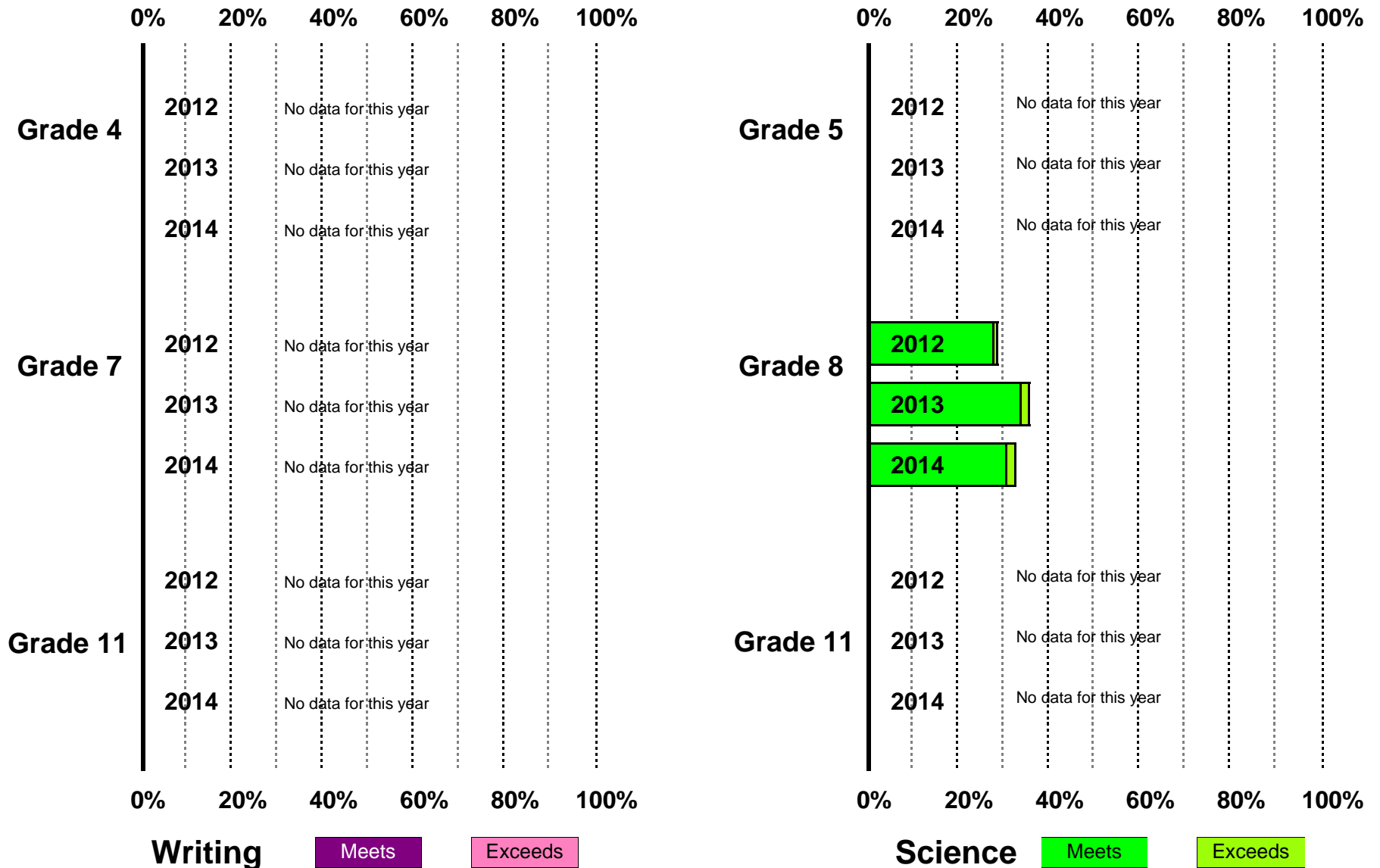
George M.S.  
Grades 6-8

Has our school's performance improved over time? (% Meets and Exceeds)



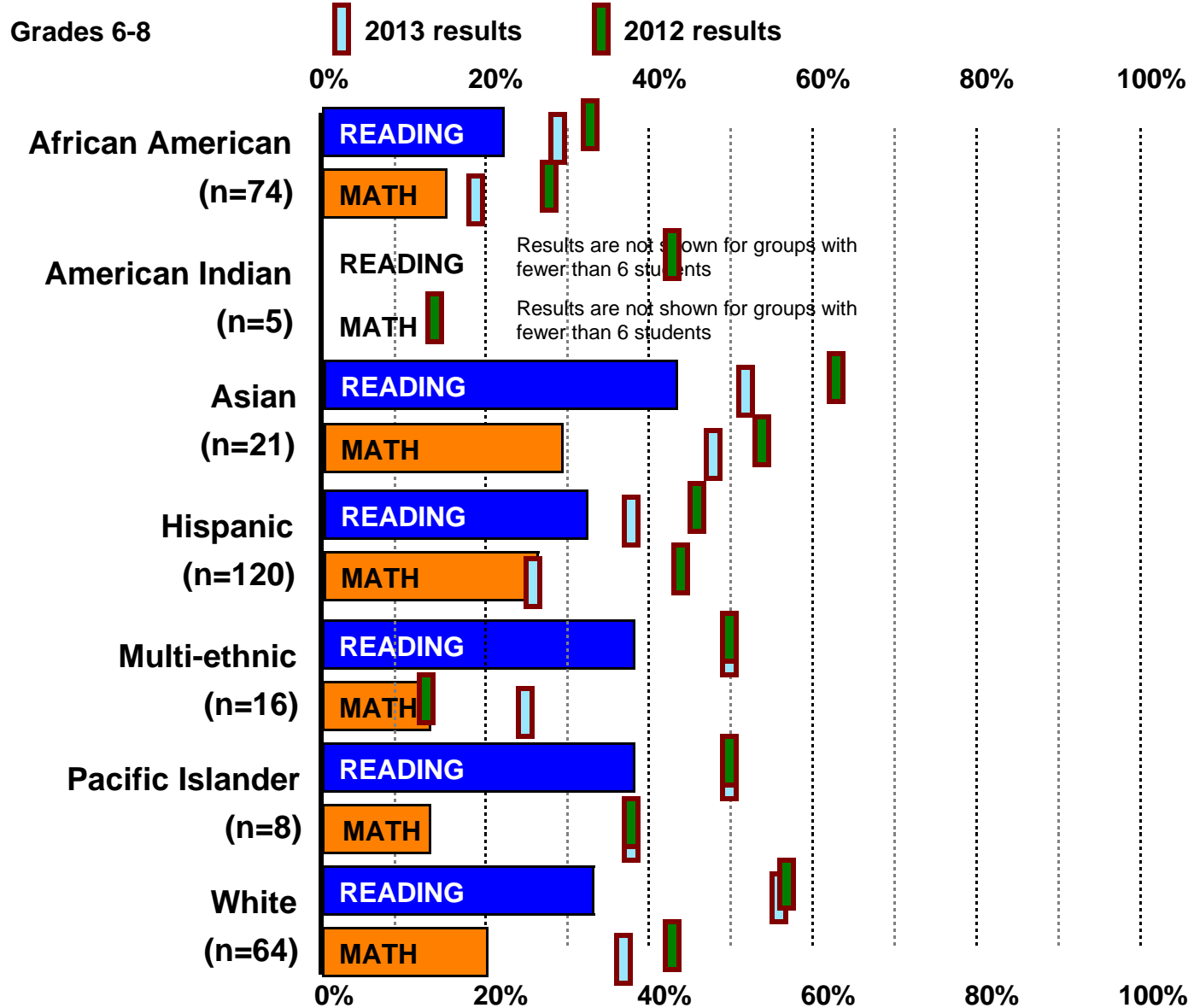
Percentages for All Students Tested Each Year

Has our school's performance improved over time? (% Meets and Exceeds)



Percentages for All Students Tested Each Year

# Are our school's ethnic groups performing equally?



**School Totals**

**READING**

**31%**

Meets & Exceeds

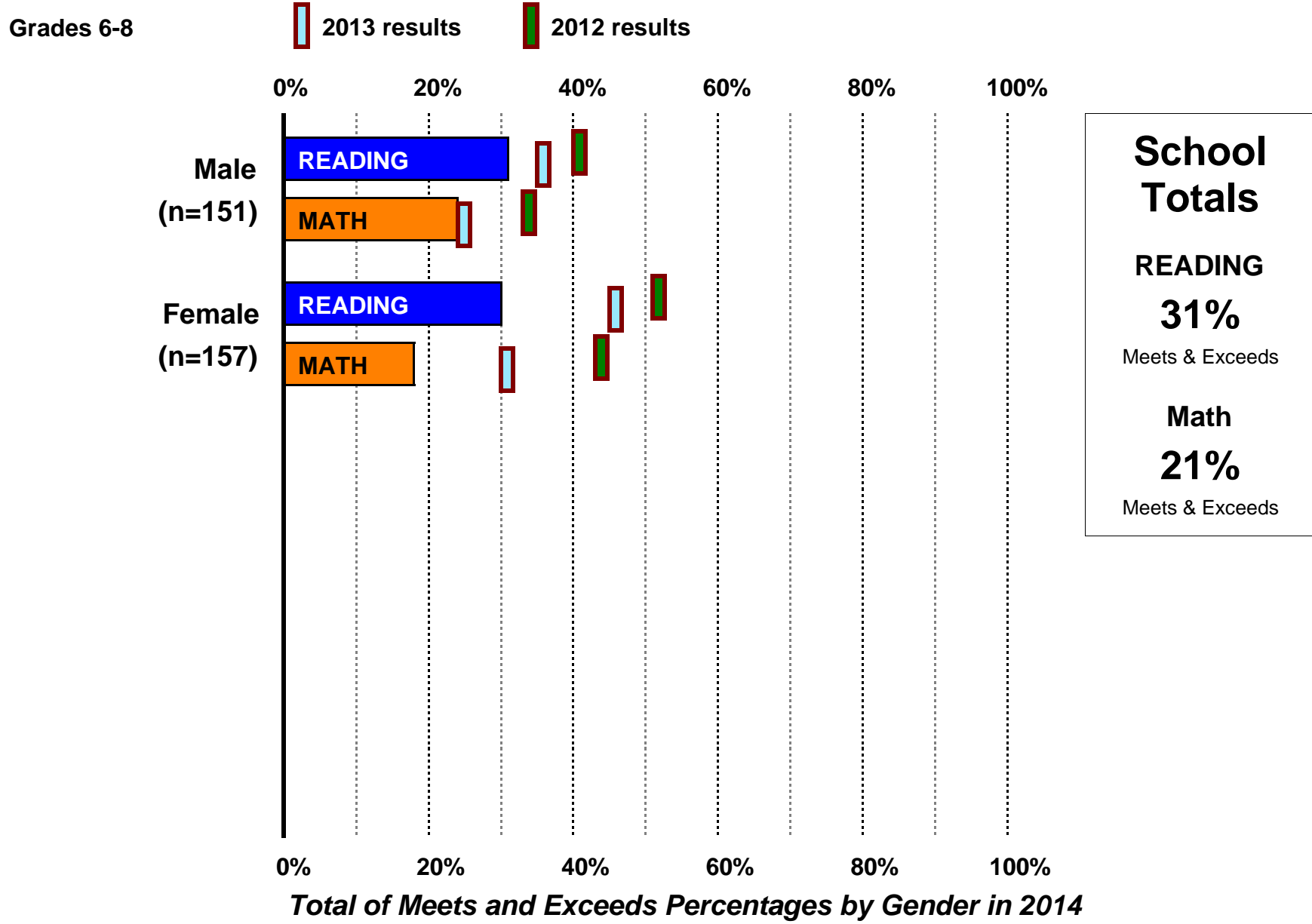
**Math**

**21%**

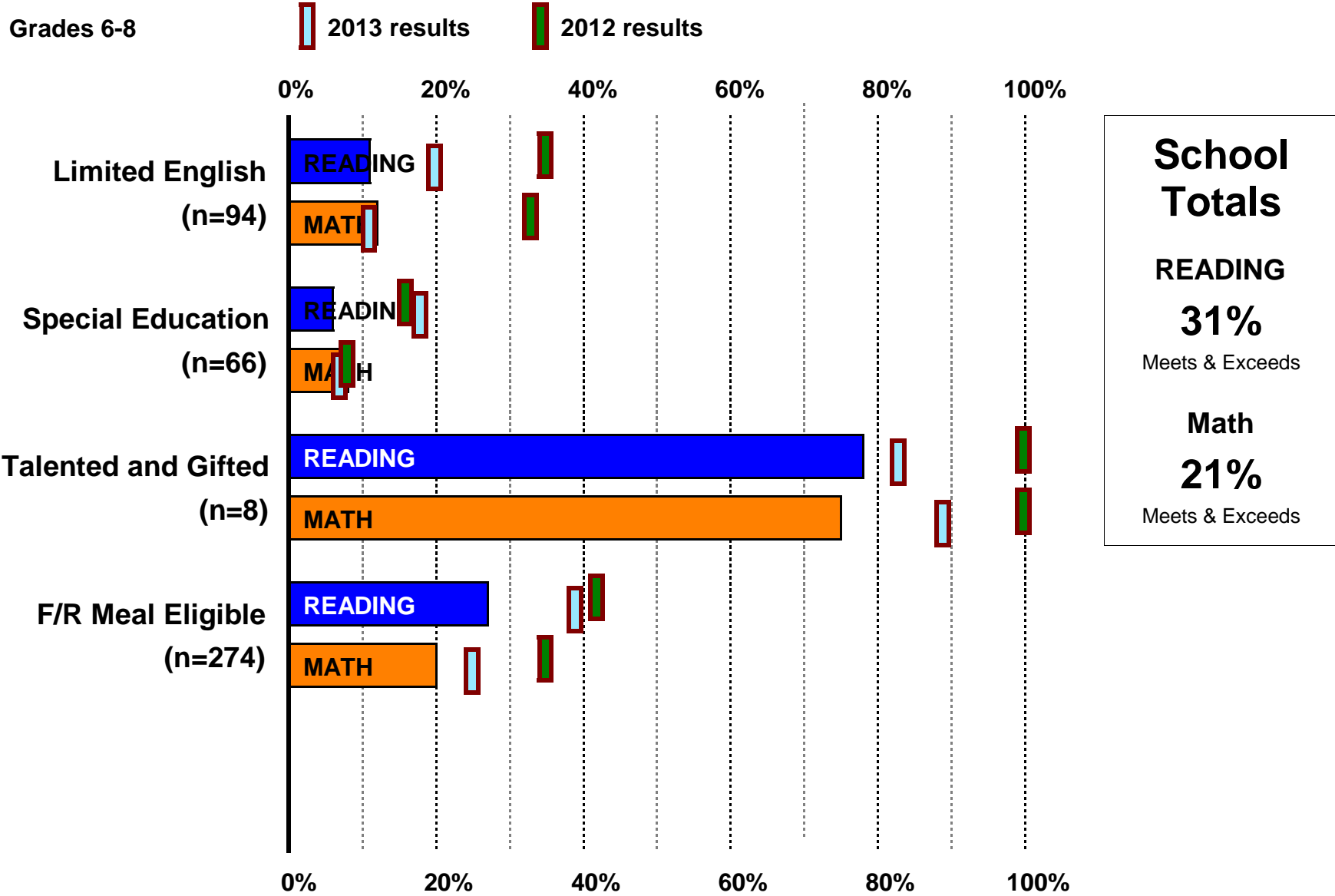
Meets & Exceeds

*Total of Meets and Exceeds Percentages by Ethnic Group in 2014*

# Are our school's males and females performing equally?



### How do special populations compare to school performance?



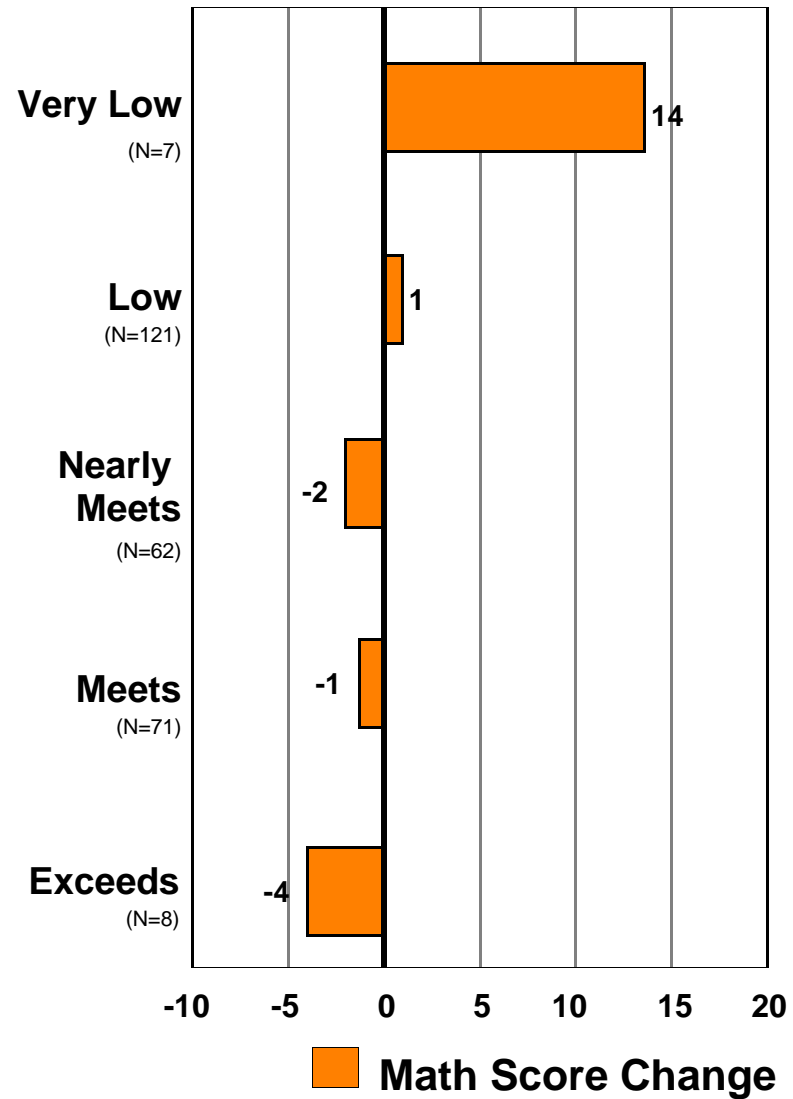
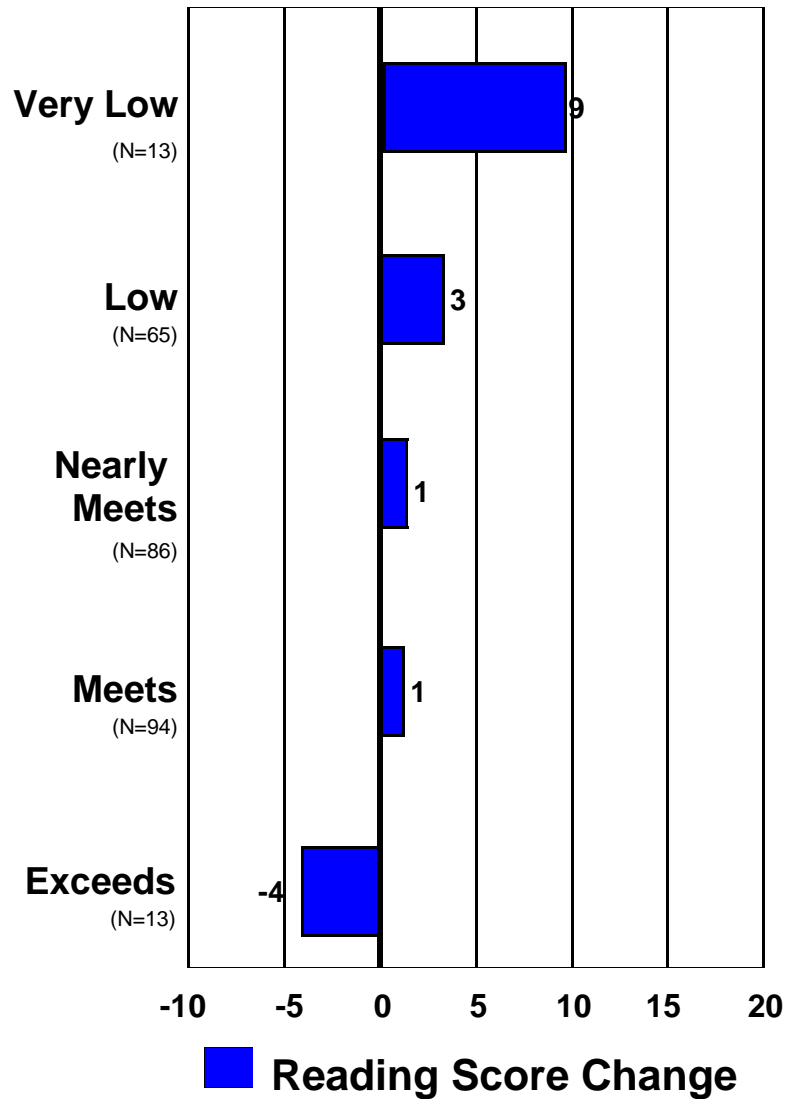
*Total of Meets and Exceeds Percentages by Special Populations in 2014*

# Are students at all performance levels showing growth?

Mean of All Grades Combined

## Reading

## Math



*Change in Mean Test Scores by Prior Performance Level*