



PORTLAND PUBLIC SCHOOLS

2017-18 Graduation Rates

January 29, 2019





Highlights

- Graduation Rate is 79.6%, up 9 points since 2013-14
- Black/African American students up nearly 6 points from 2016-17



Highlights

- Alliance High School posted the largest year-to-year increase in graduation rates (5 percentage points)
- For the fourth year in a row, Jefferson High School's graduation rate was 80% or higher.



Key Strategies for Success

- **Double Blocking** -- Allows teachers to spend more time with each student for individualized instruction and deeper learning
- **Freshman Success Teams** -- Keeping 9th graders engaged and on track, one student at a time.

Data Point	2016-17	2017-18	Trend
Ninth-grade on-track rate	85%	92%	Increase 7 points

- **Student Engagement Coaches** -- Addition of Student Engagement Coaches funded by Measure 98 to provide improvement in attendance systems at schools and case management for struggling students.



Key Strategies for Success

- **Advanced coursework** -- The number of students taking AP, IB, dual credit and college classes increased by 450 students -- nearly 10 percent higher than last year.
- **Reconnection Services & Center** re-engages students who have left school and provides them with with academic assessments, credit evaluation and school placement. In 2017-18, 35 students completed high school after being re-engaged.
- **Career and Technical Education** -- Increased number of students taking CTE classes by more than 1,000. In 2017-18, the CTE graduation rate for students taking just 1 credit in CTE increased from 89% to *98.6%
*data includes modified diploma students for the first time.



Areas of Focus

- Special education students: 59.3%, decline by 4.7 percentage points from the previous year, but 2 points above two years ago
- English learners: 57.5%, decline of 6 percentage points from previous year, but 6 points above two years ago



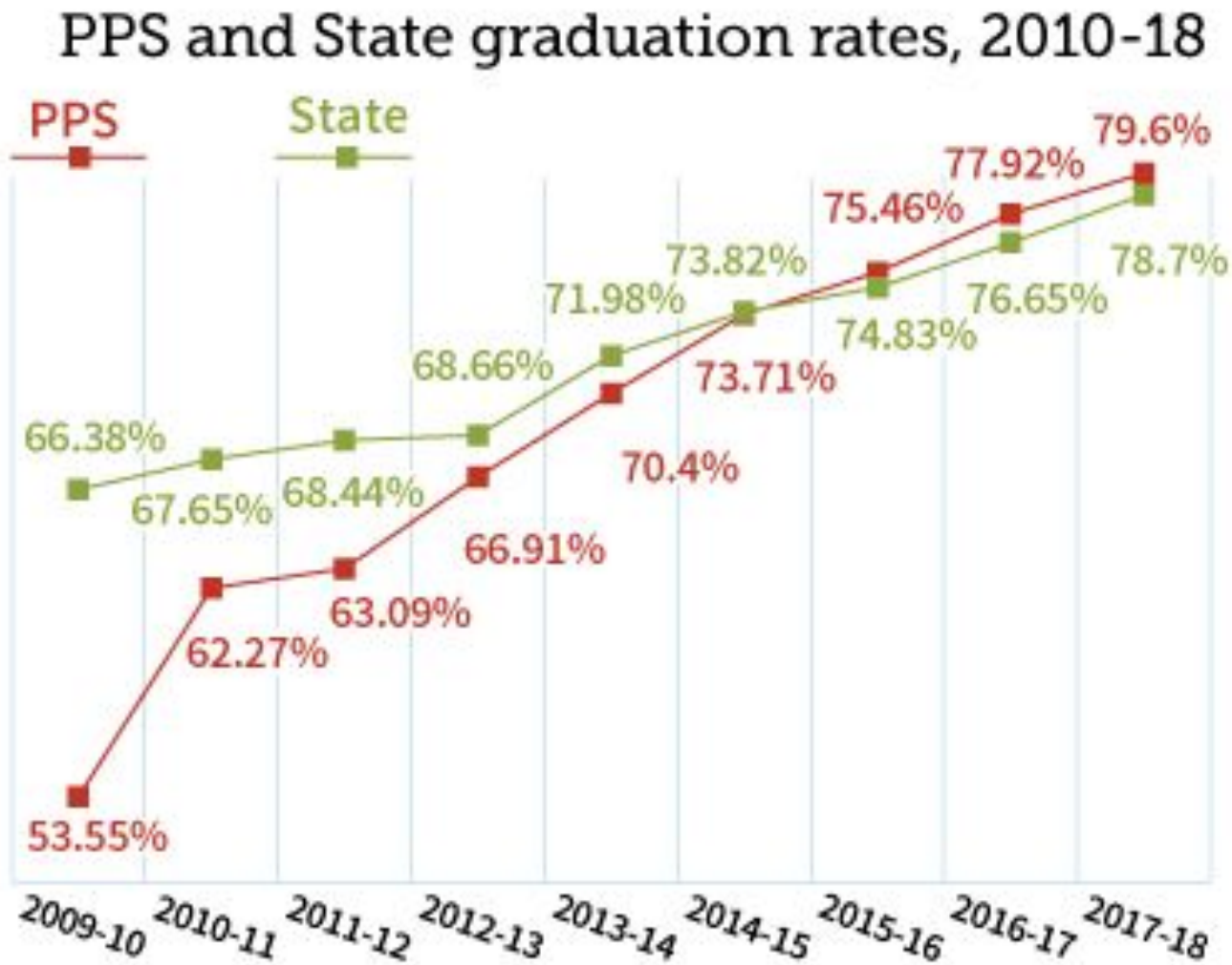
4-Year Cohort Graduation Rates

- In 2008-09, ODE began tracking graduation rates using the cohort graduation rate method
 - Follows a class of students through four years of high school and measures the percentage that graduate on-time
 - More rigorous than previous method
 - Students earning Regular or Modified diplomas count as graduates
 - Students earning GEDs or Extended diplomas are not counted as graduates, but are considered completers





Nine years of higher rates



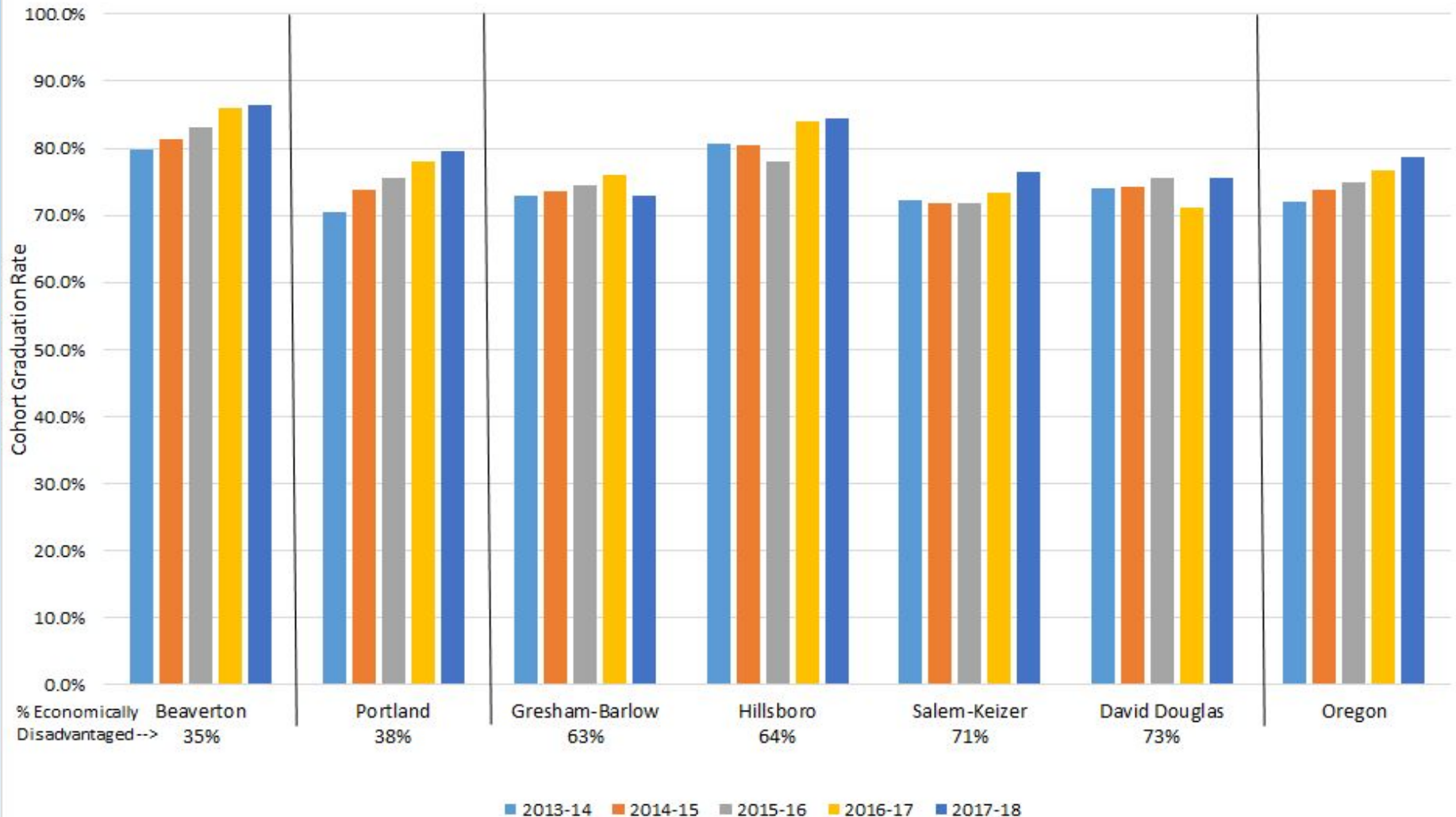
Source: Oregon Department of Education



PORTLAND PUBLIC SCHOOLS

PPS, Oregon and Comparison Districts

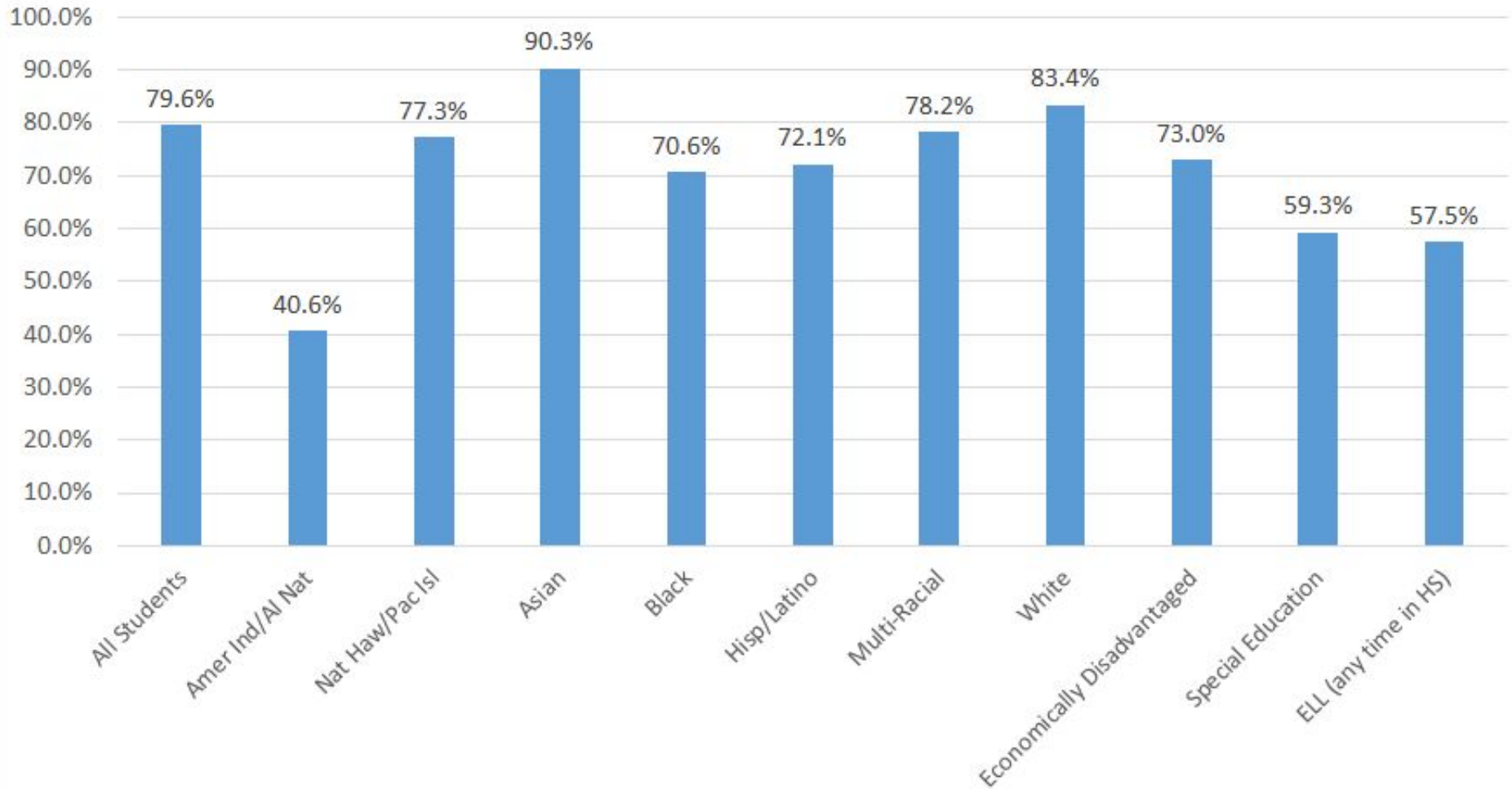
4-Year Cohort Graduation Rates: PPS, Oregon and Select Comparison Districts





PPS Race/Ethnicity Gap

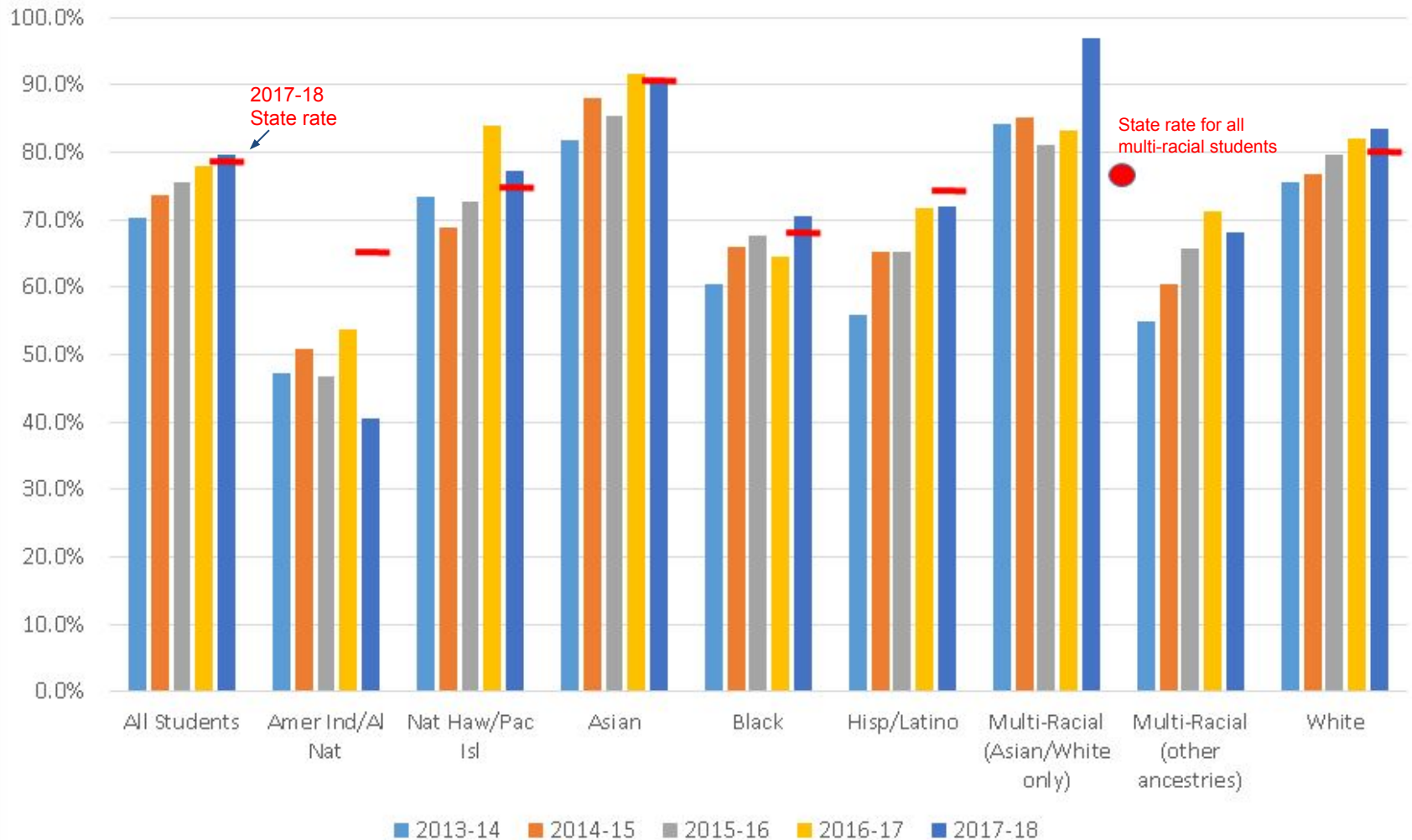
PPS Graduation Gap by Race/Ethnicity 2017-18





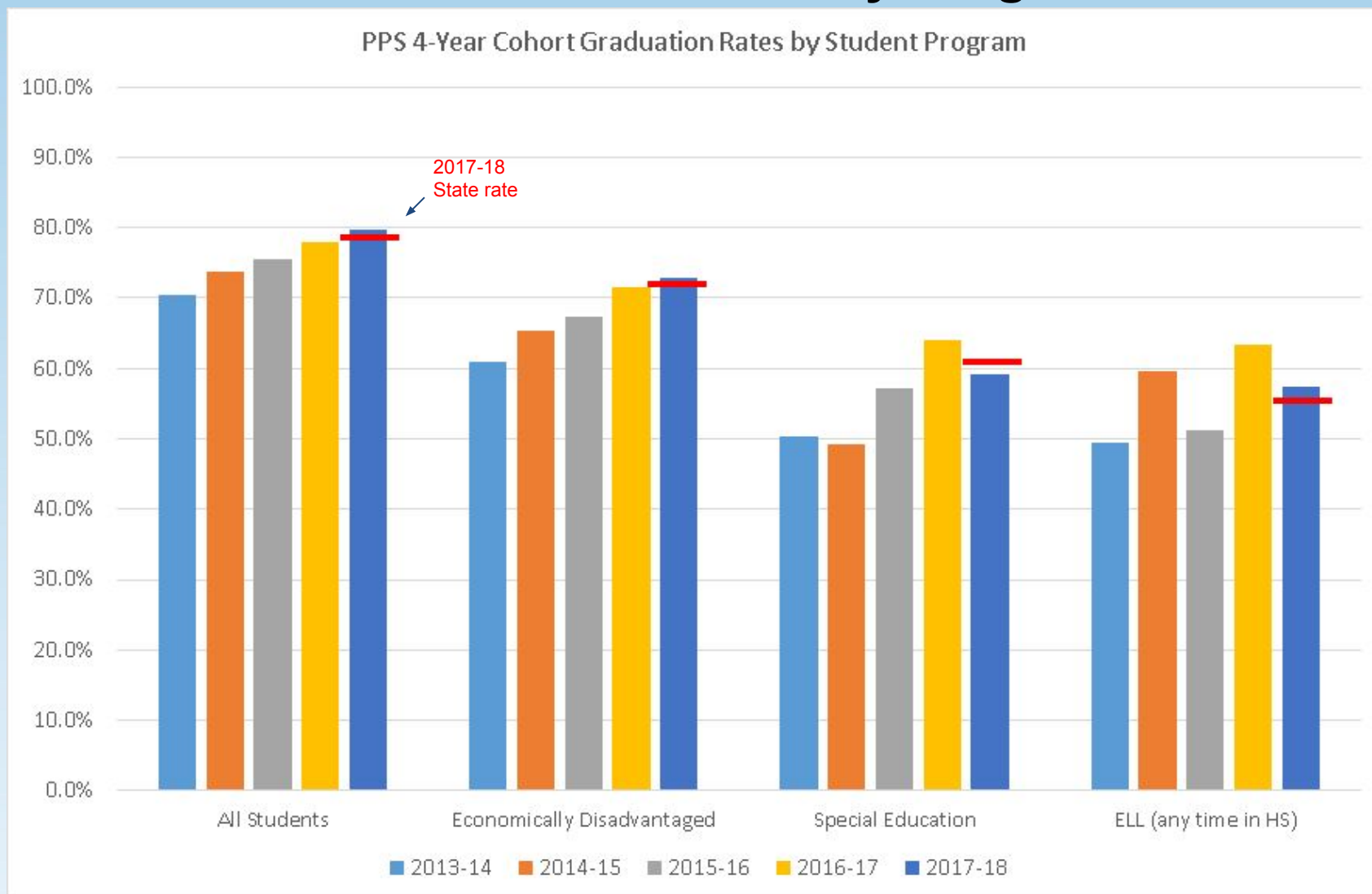
PPS Graduation Rates by Race/Ethnicity

PPS 4-Year Cohort Graduation Rates by Race/Ethnicity





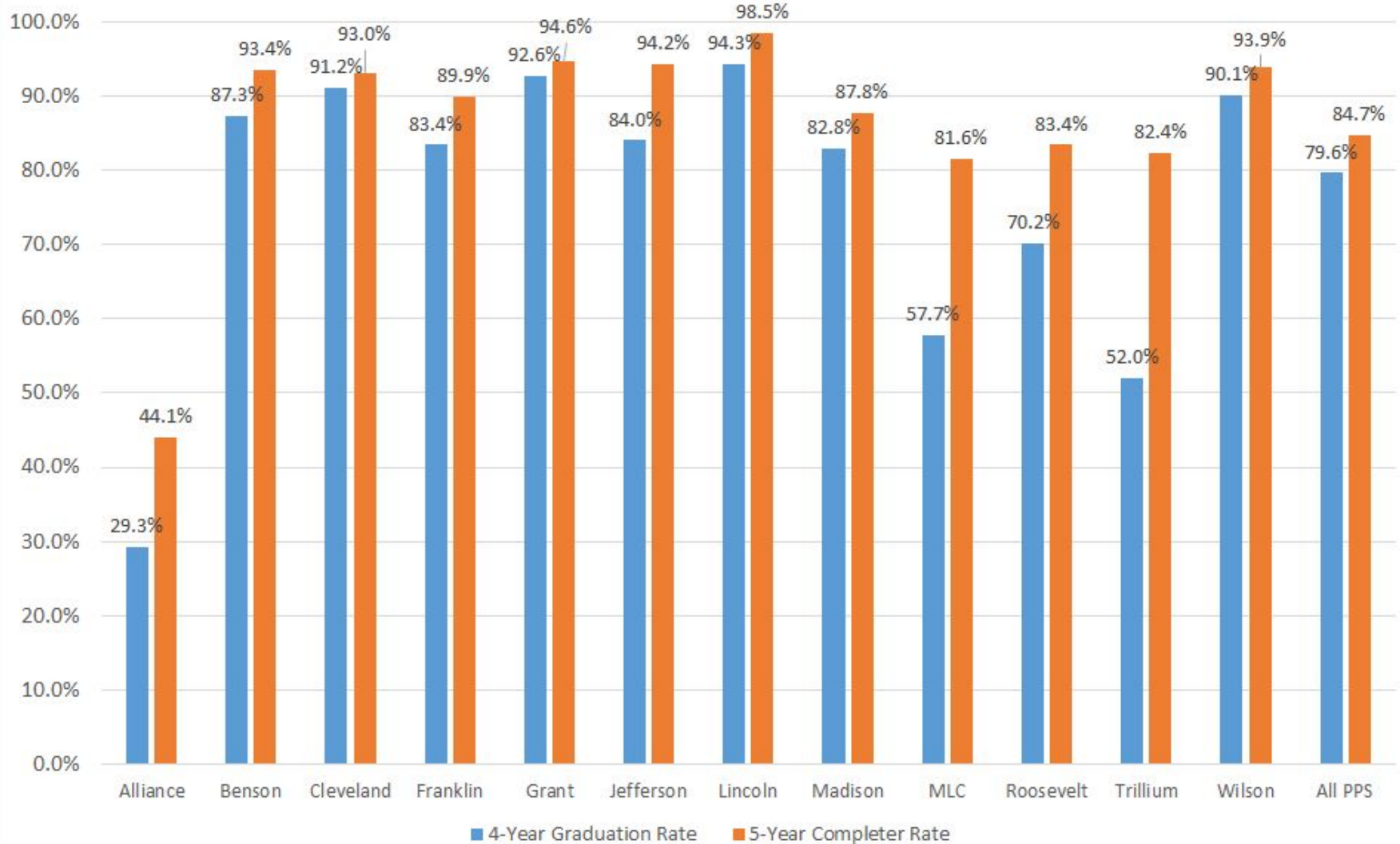
PPS Graduation Rates by Program





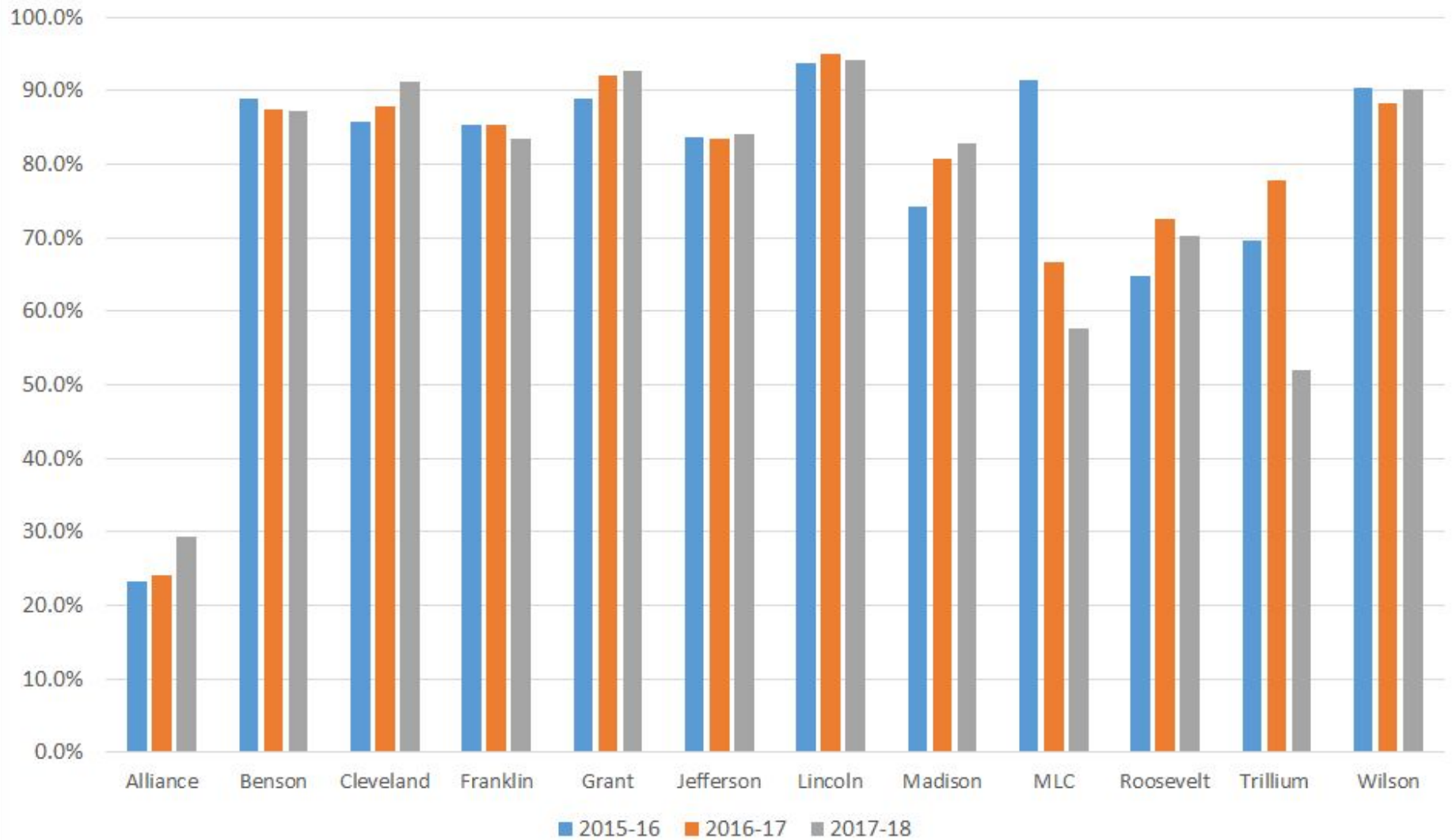
Graduation and Completer Rates by School

2017-18 Four-Year Graduation and Five-Year Completer Rates by School





PPS 3-Year Graduation Trend by School



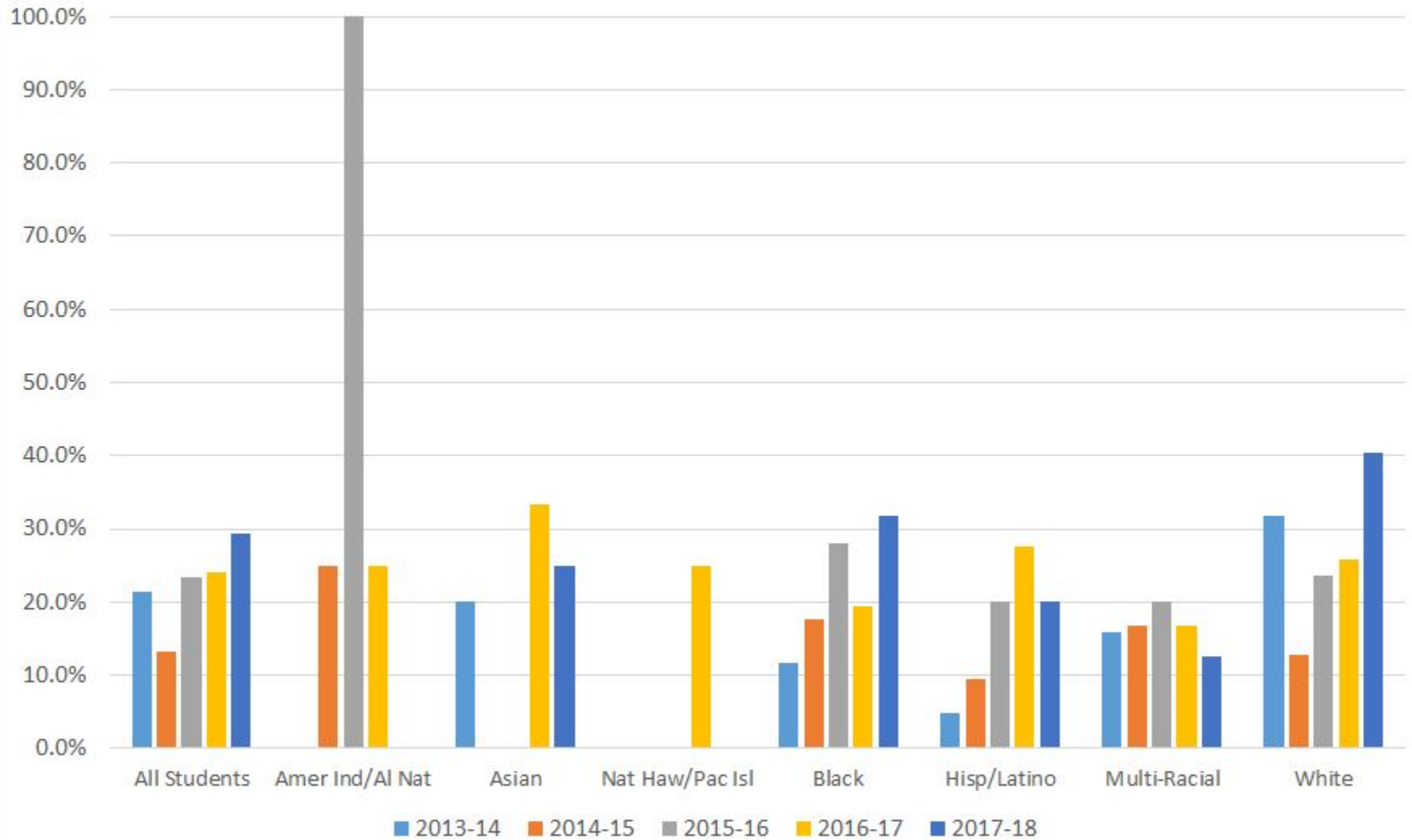


Next Steps

- Implement culturally relevant curriculum
- Improve school climate and reduce chronic absenteeism
- Prepare all students for post-secondary success
- Continue to implement grade level collaborative instructional teacher teams
- Enhance CTE quality, partnerships and sustain successful programs

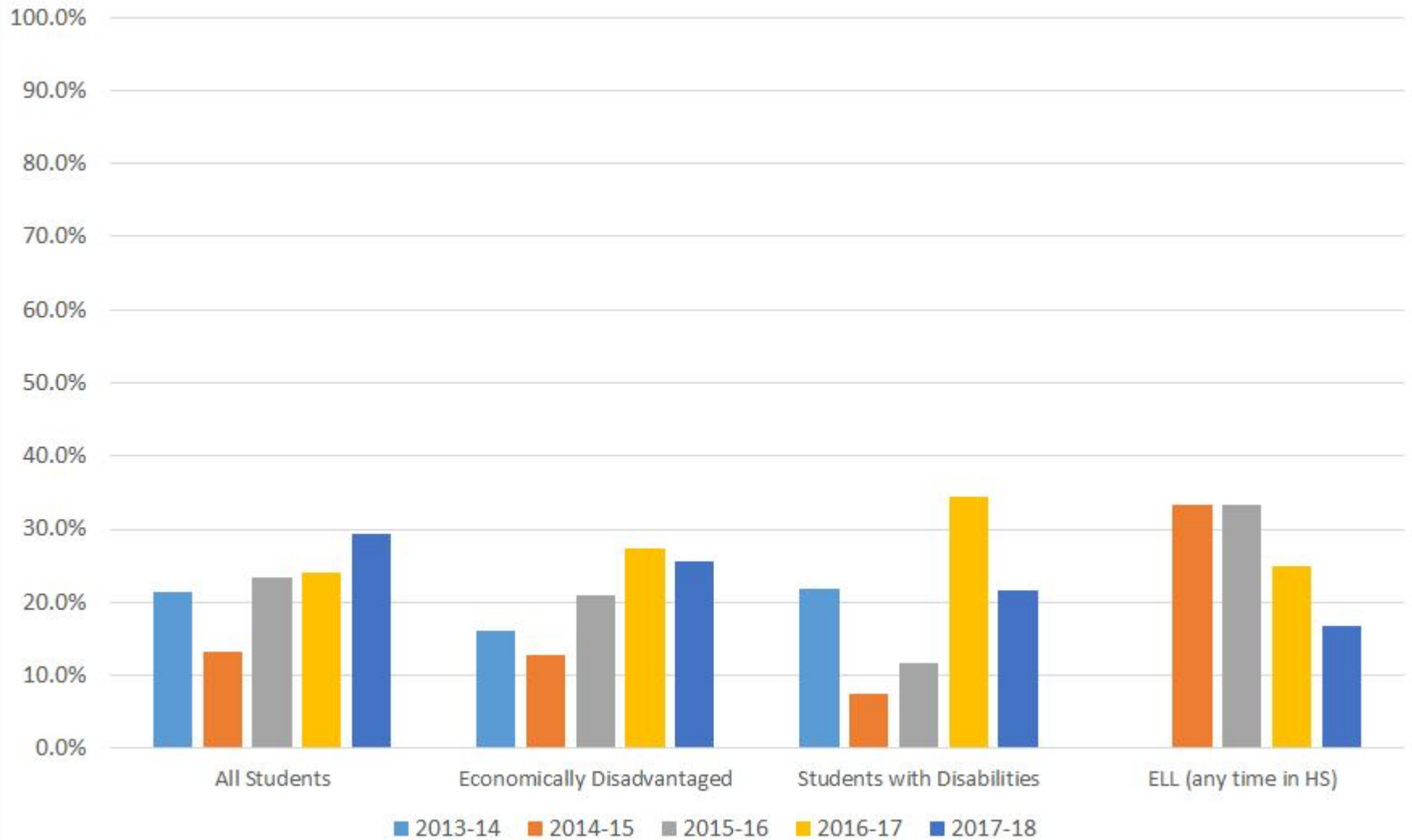


Alliance 4-Year Cohort Graduation Rates by Race/Ethnicity





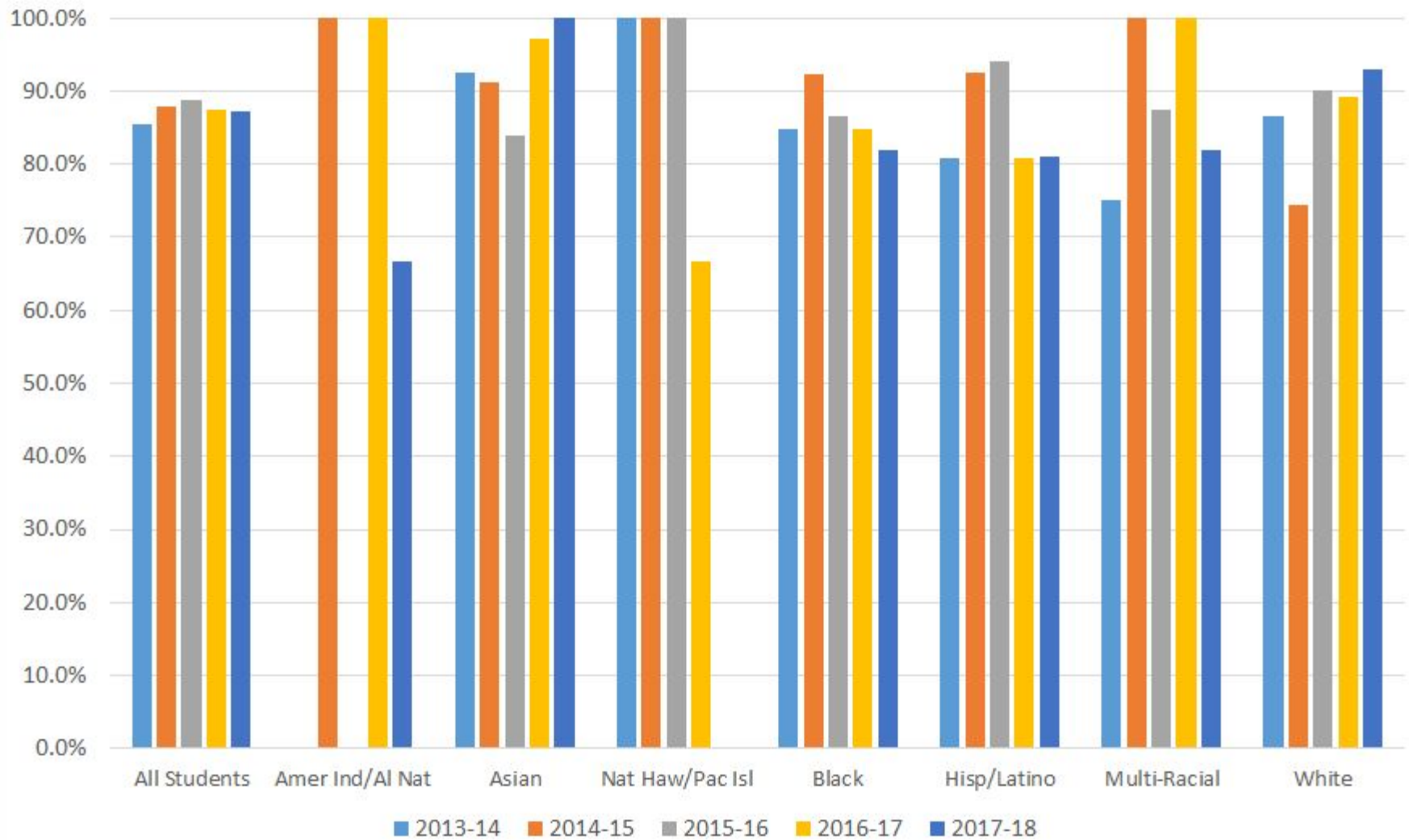
Alliance 4-Year Cohort Graduation Rates by Student Program





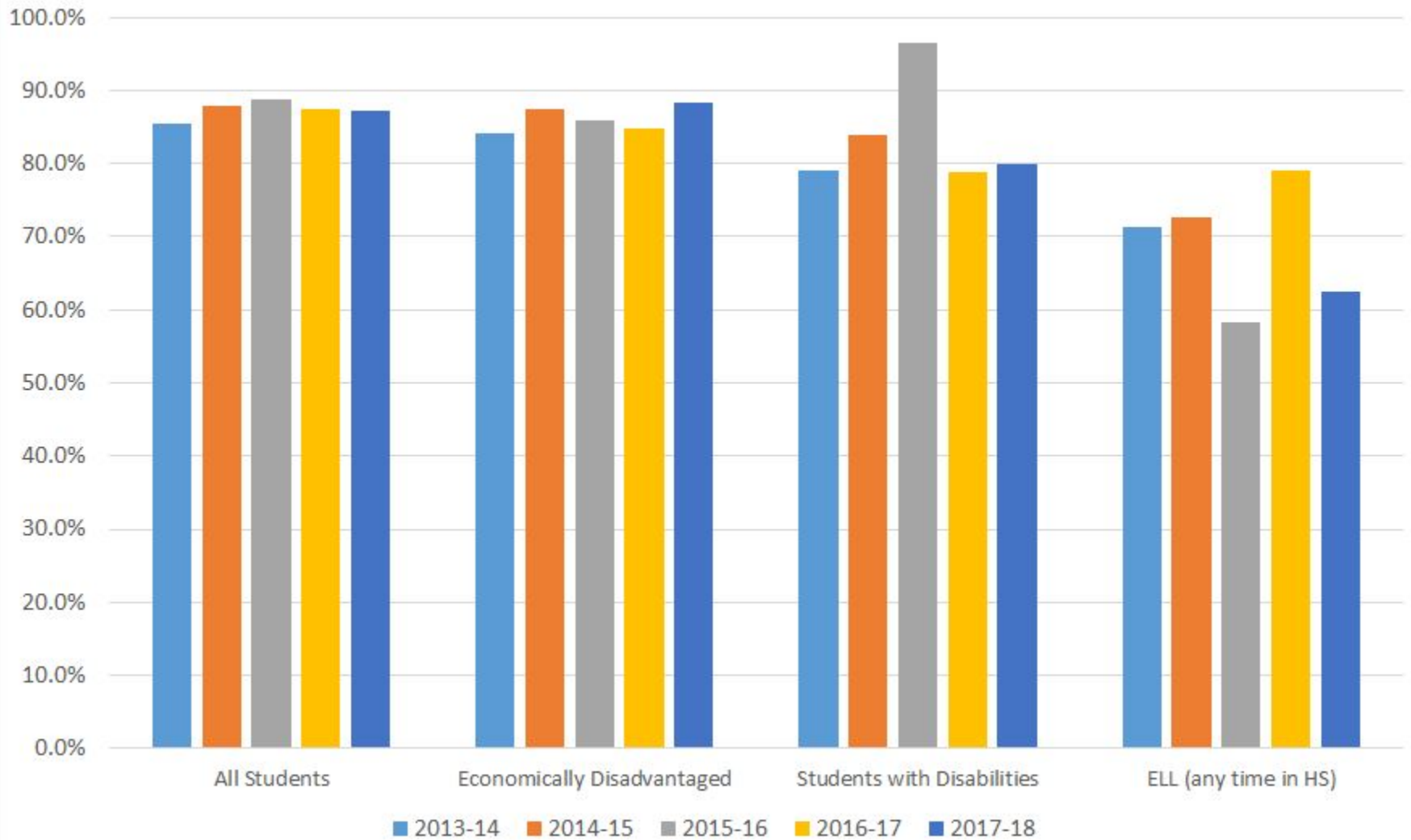
PORTLAND PUBLIC SCHOOLS

Benson 4-Year Cohort Graduation Rates by Race/Ethnicity





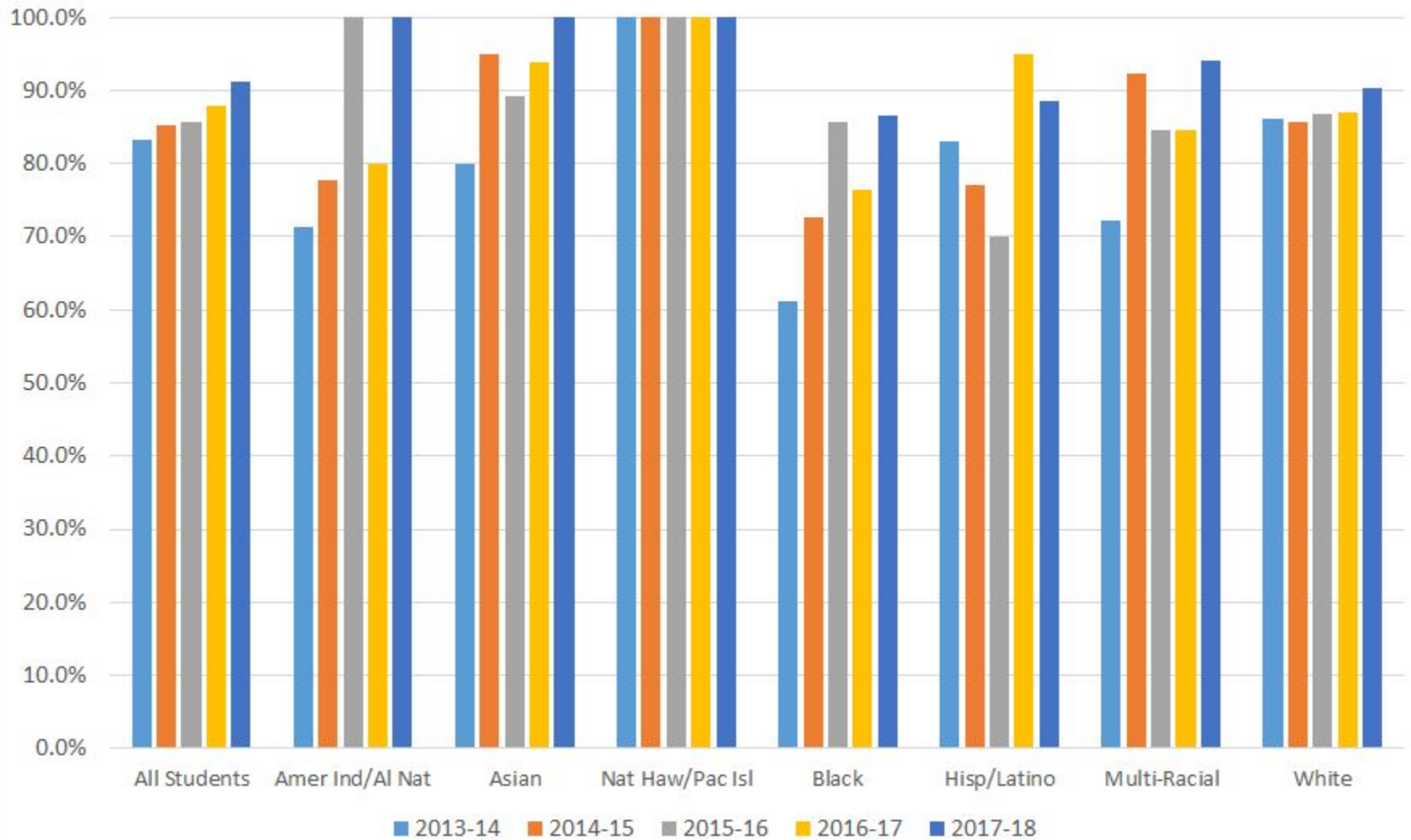
Benson 4-Year Cohort Graduation Rates by Student Program





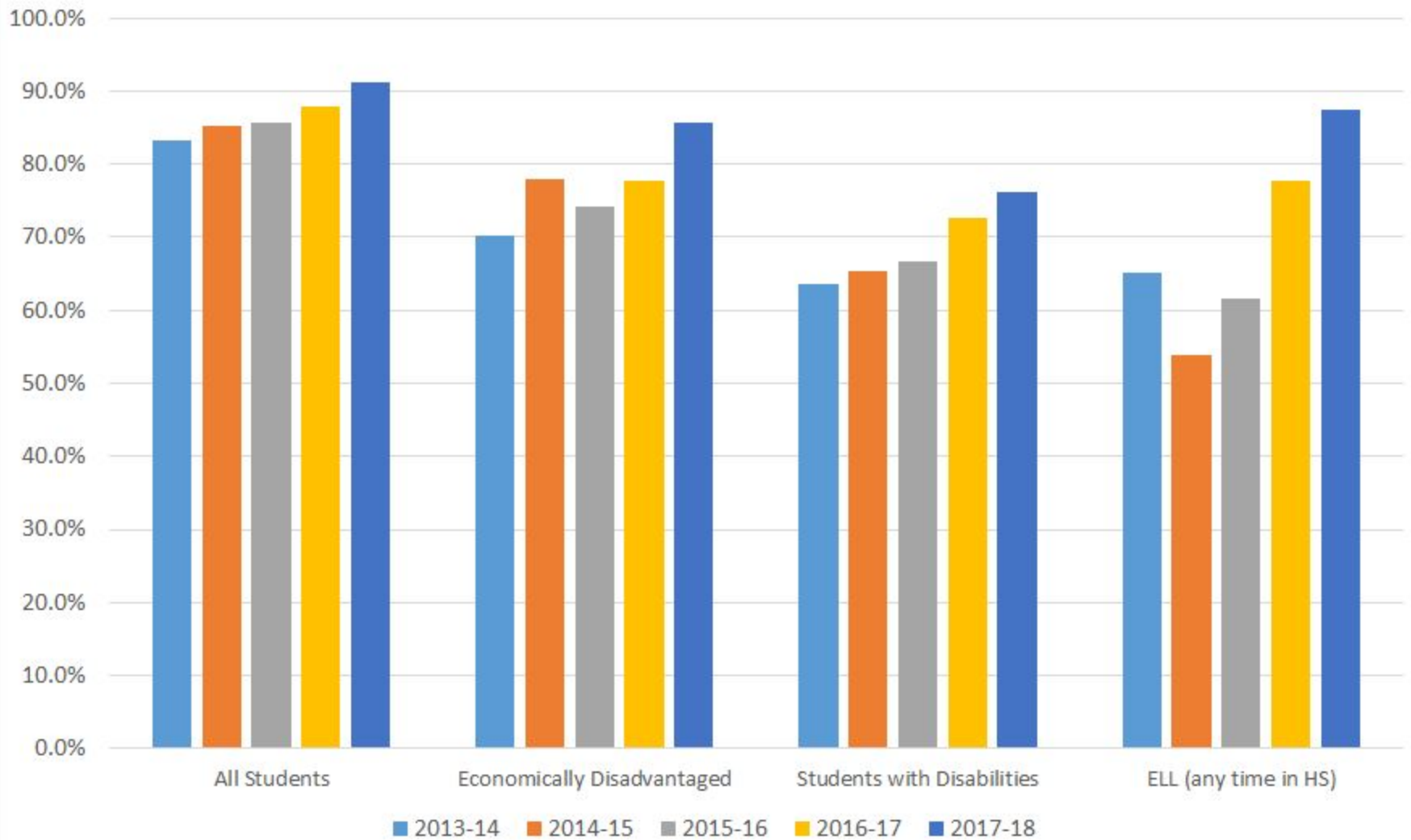
PORTLAND PUBLIC SCHOOLS

Cleveland 4-Year Cohort Graduation Rates by Race/Ethnicity





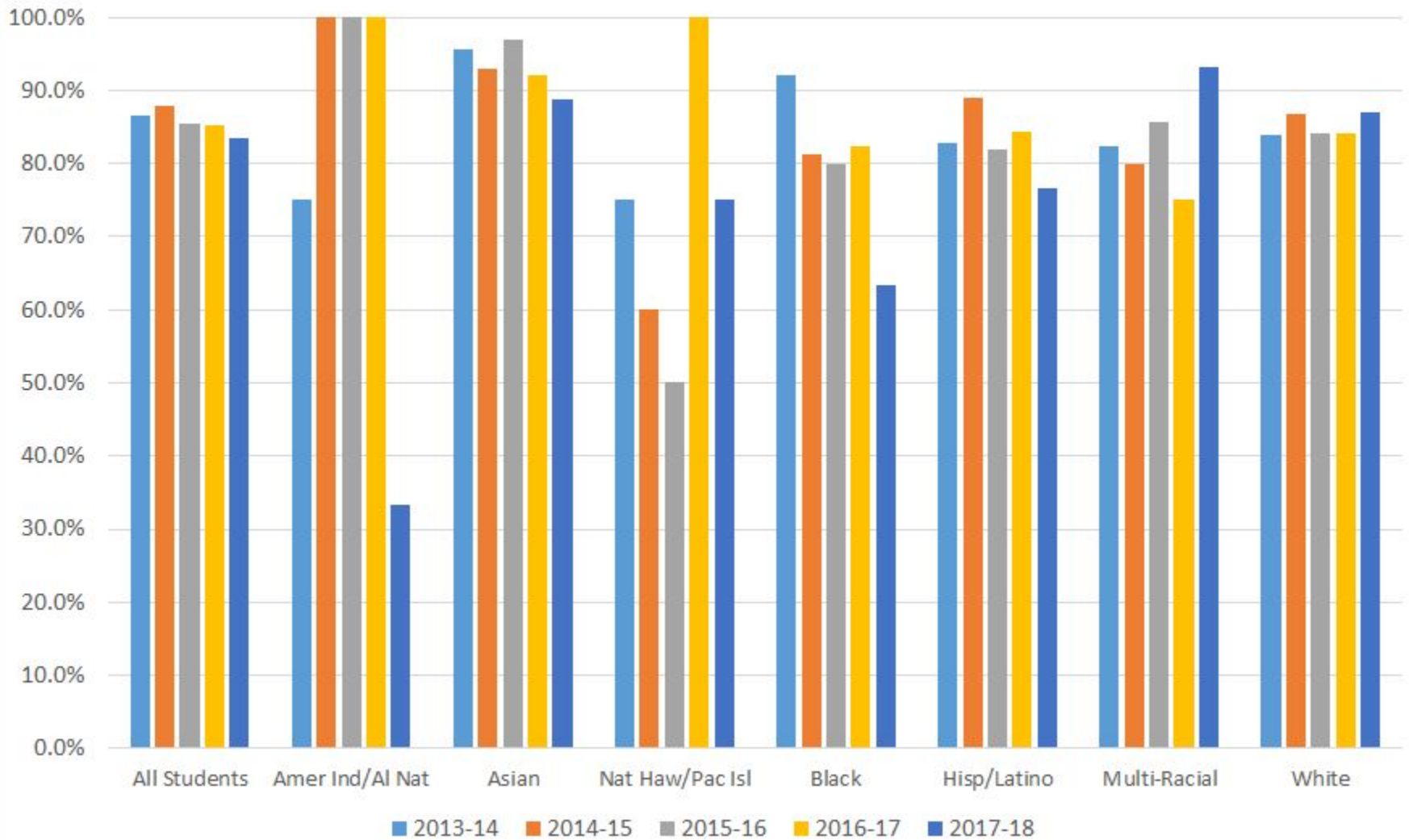
Cleveland 4-Year Cohort Graduation Rates by Student Program





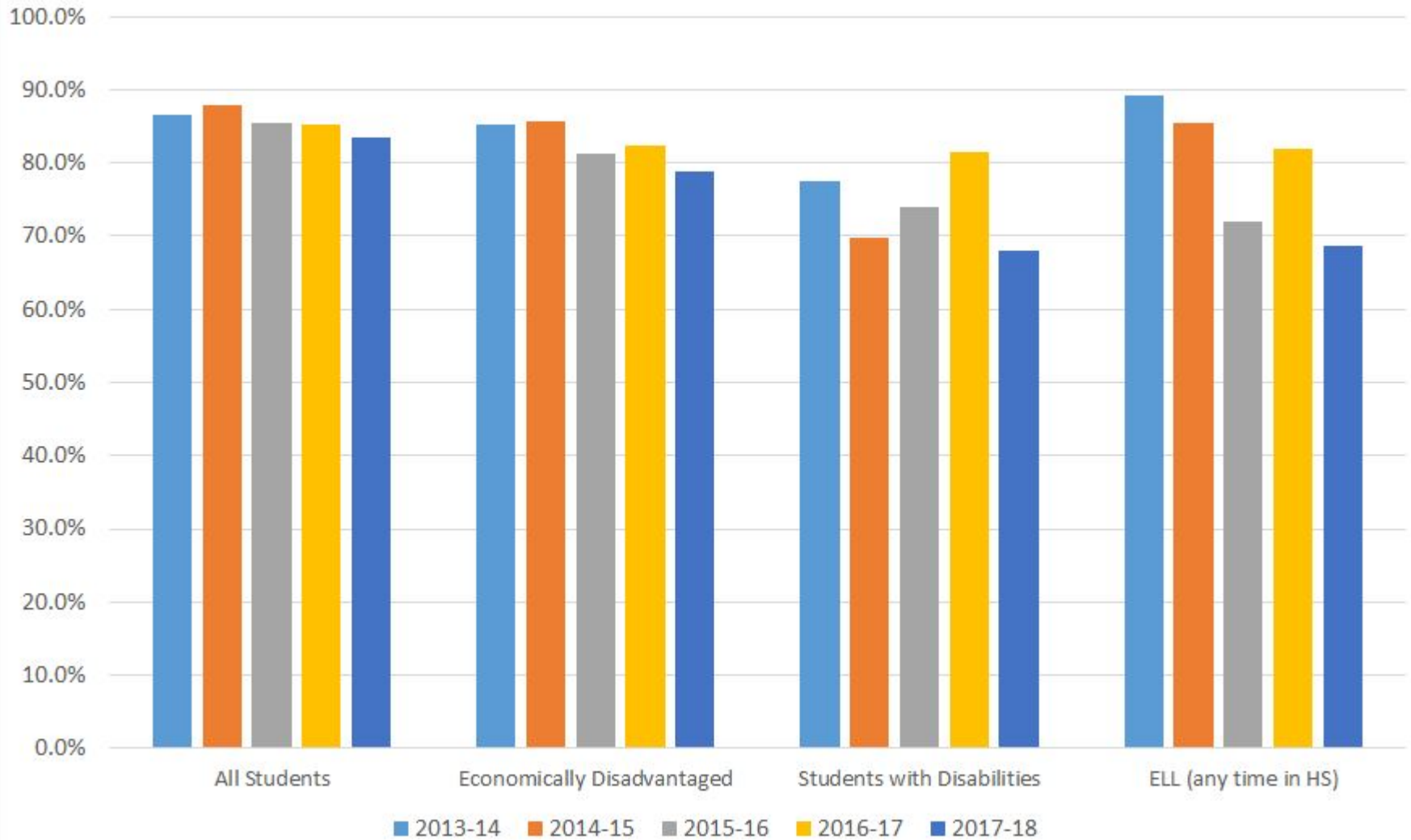
PORTLAND PUBLIC SCHOOLS

Franklin 4-Year Cohort Graduation Rates by Race/Ethnicity





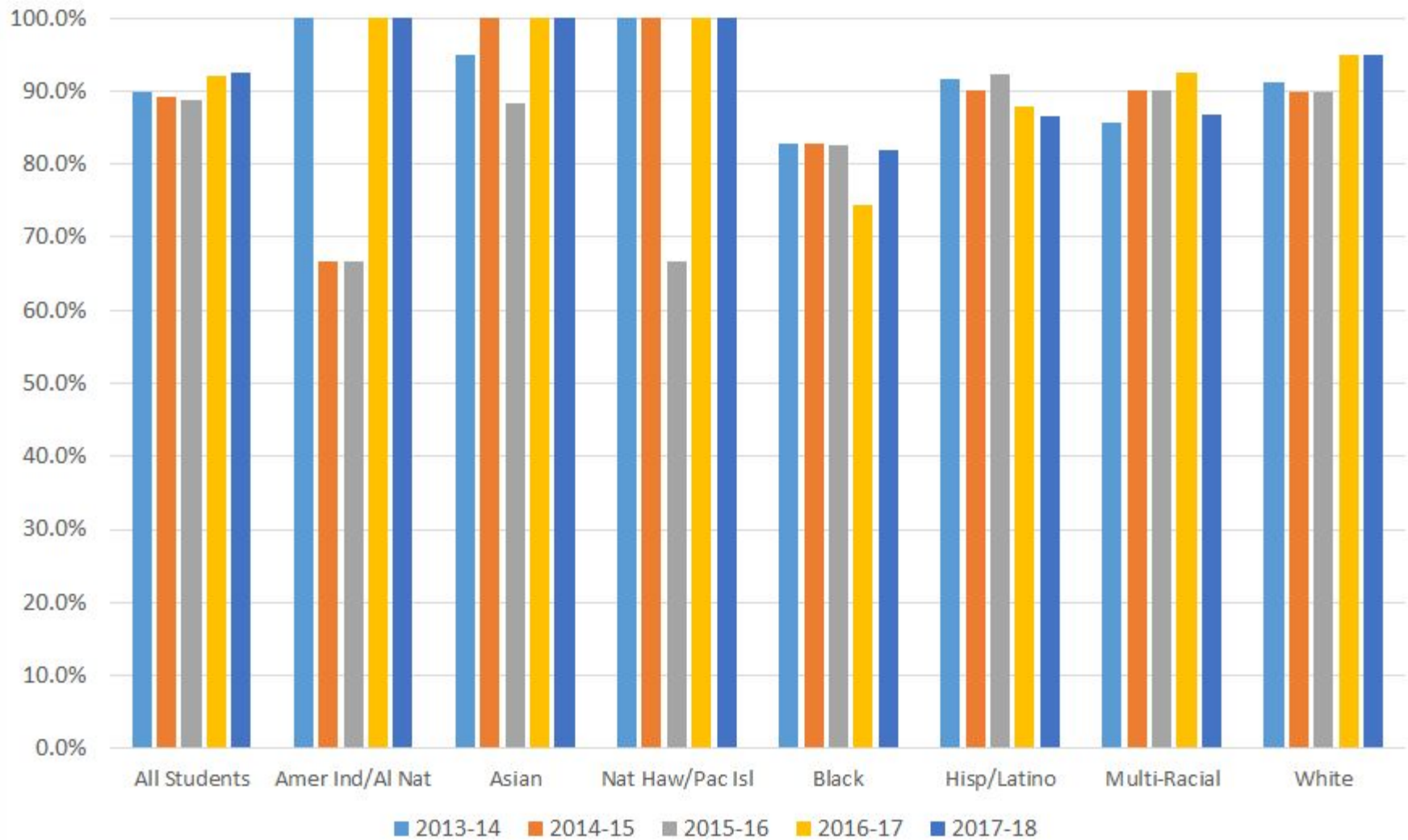
Franklin 4-Year Cohort Graduation Rates by Student Program





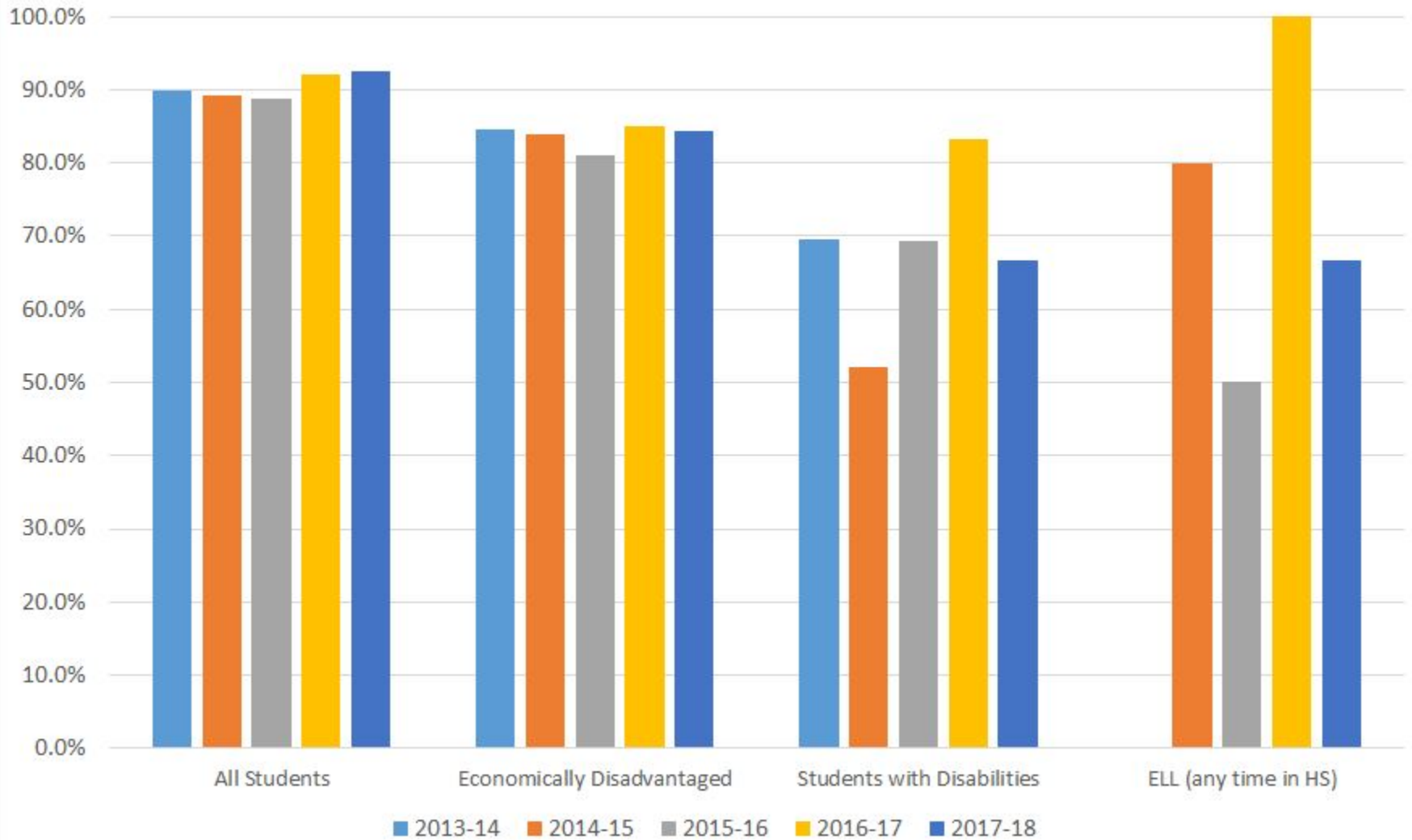
PORTLAND PUBLIC SCHOOLS

Grant 4-Year Cohort Graduation Rates by Race/Ethnicity



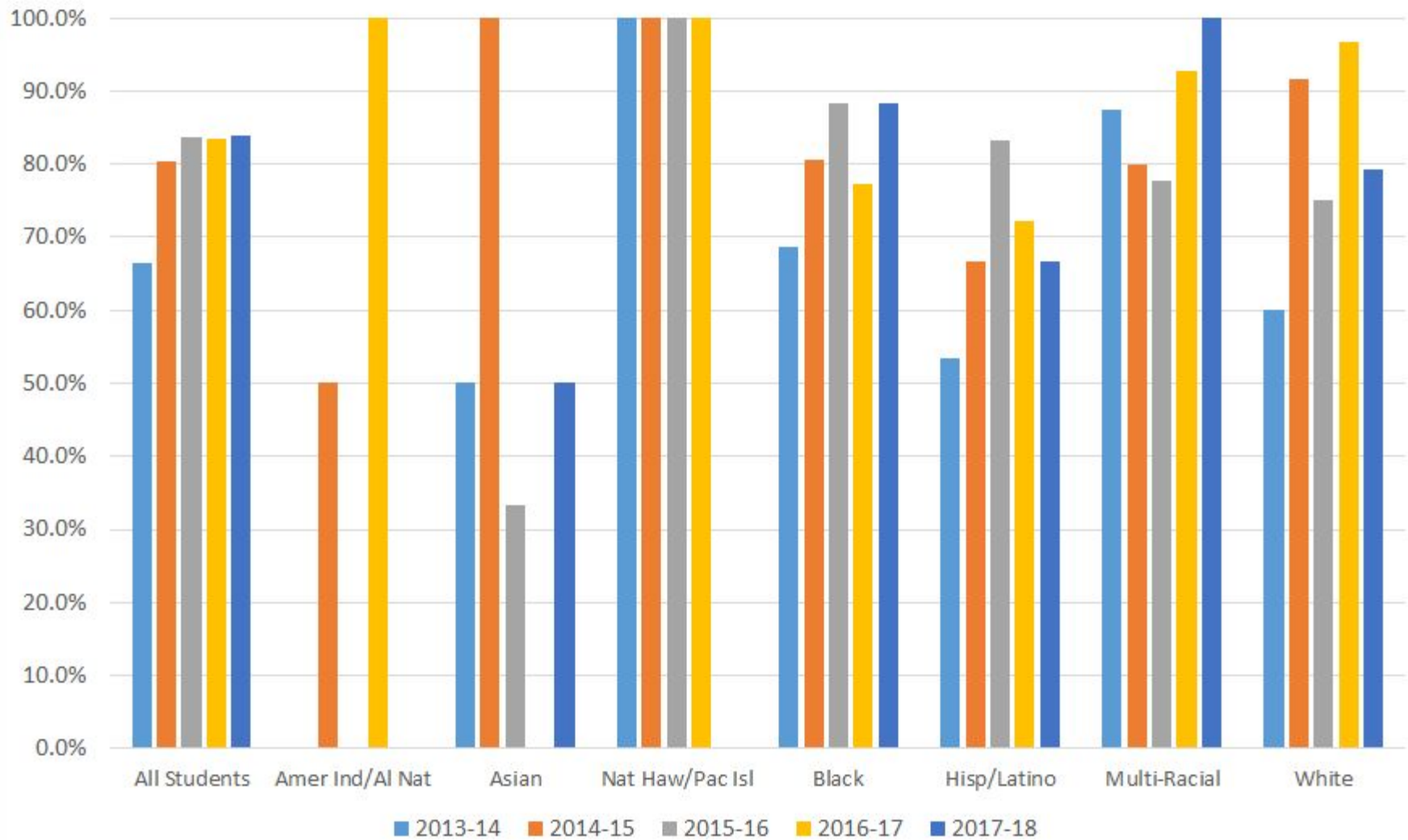


Grant 4-Year Cohort Graduation Rates by Student Program



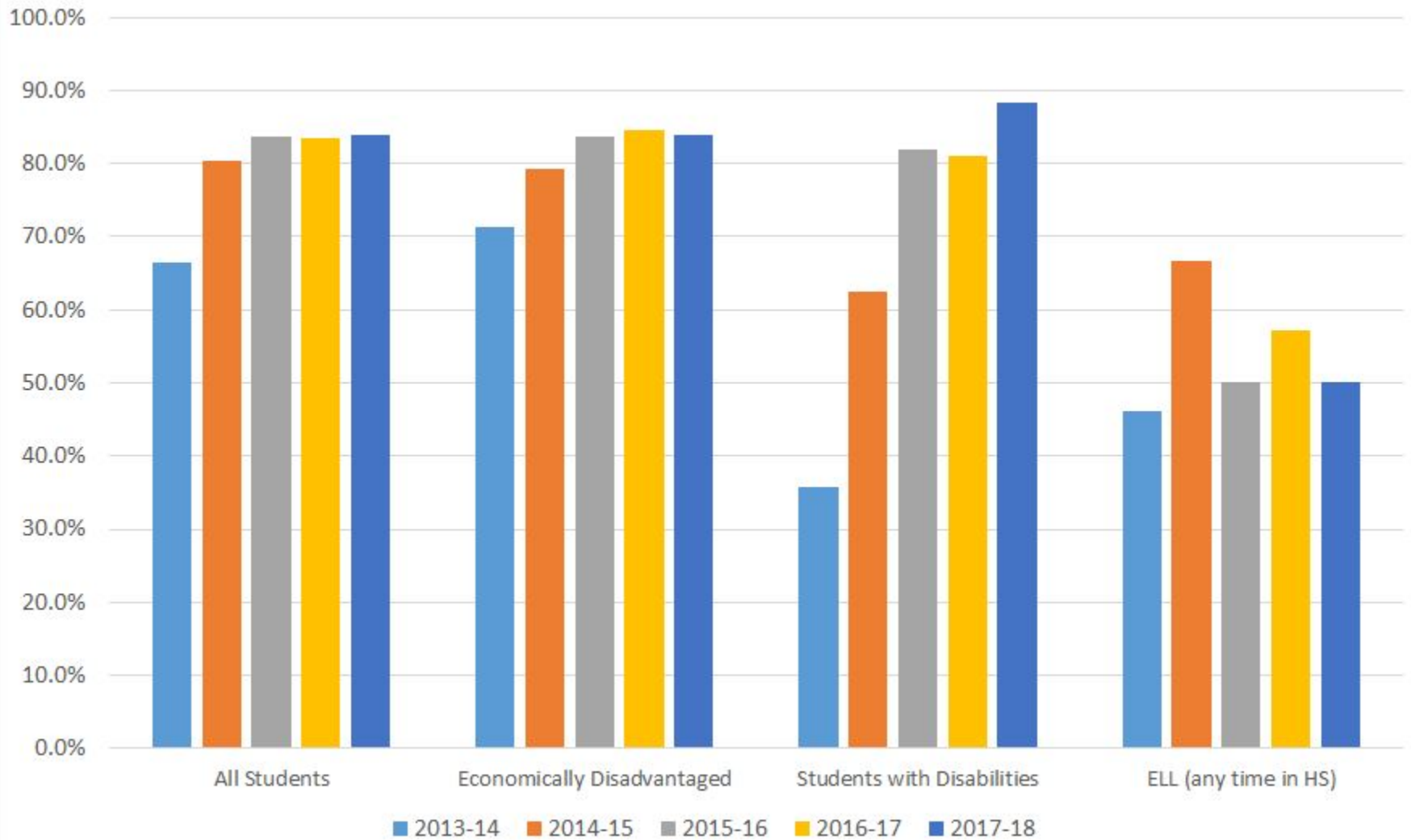


Jefferson 4-Year Cohort Graduation Rates by Race/Ethnicity



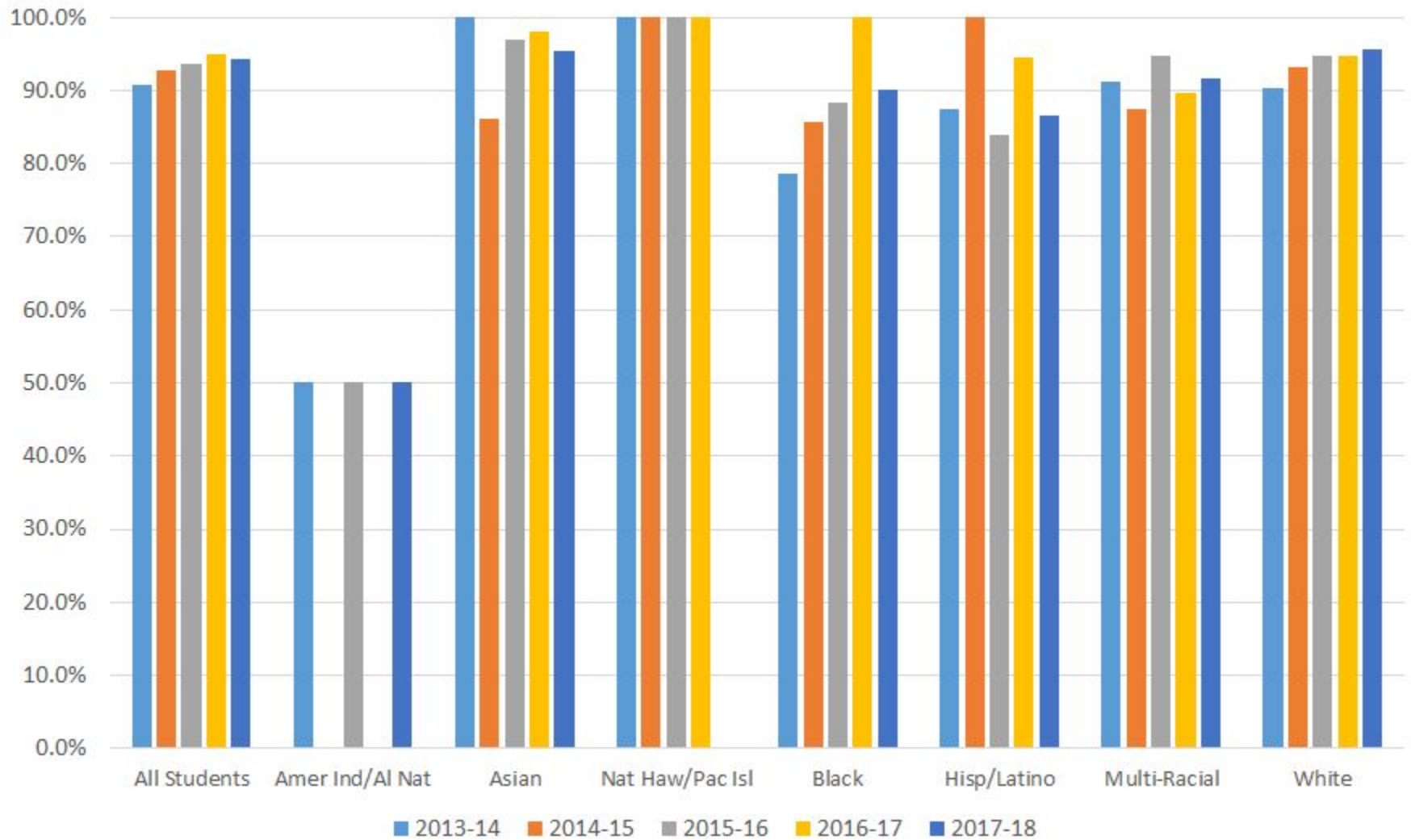


Jefferson 4-Year Cohort Graduation Rates by Student Program



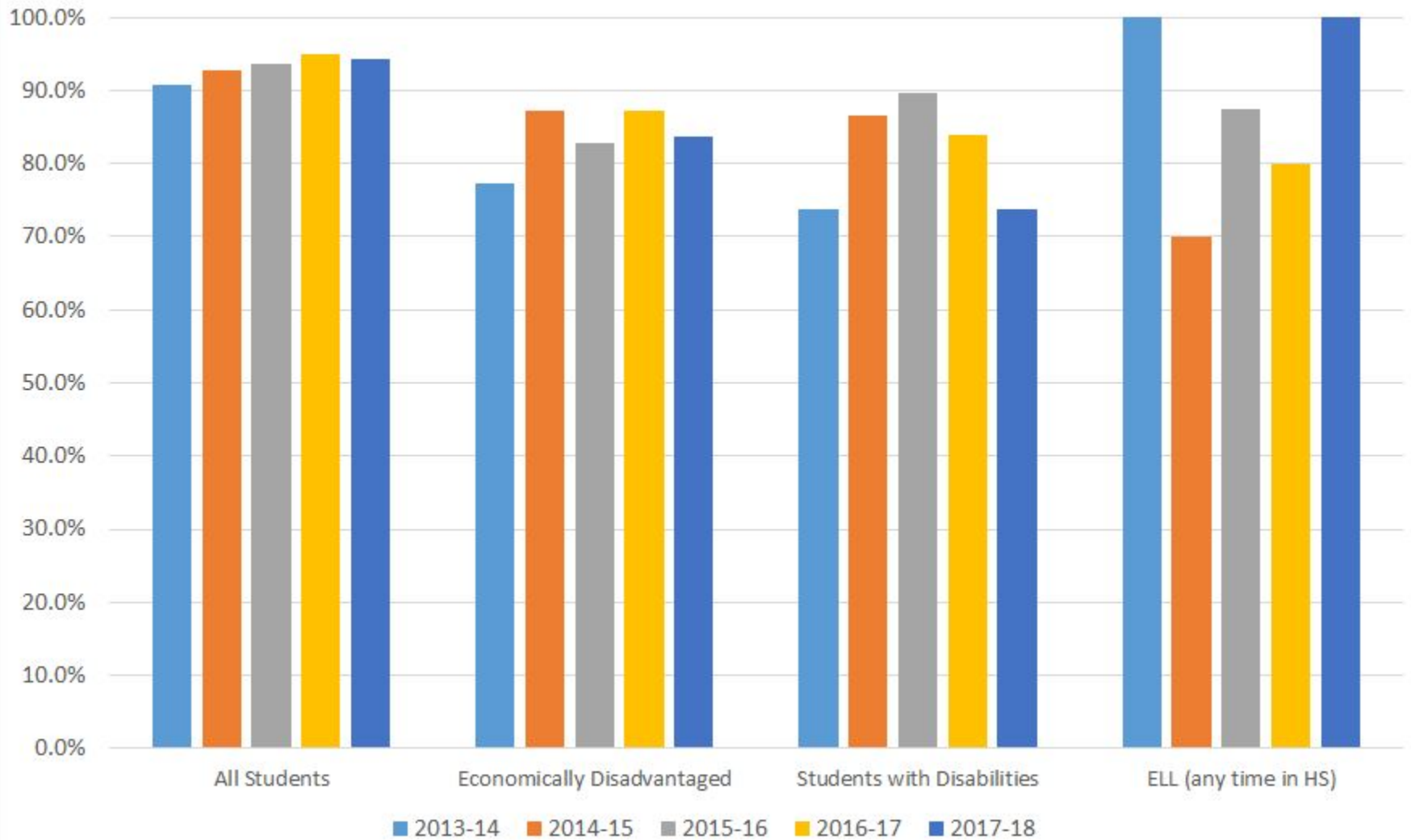


Lincoln 4-Year Cohort Graduation Rates by Race/Ethnicity



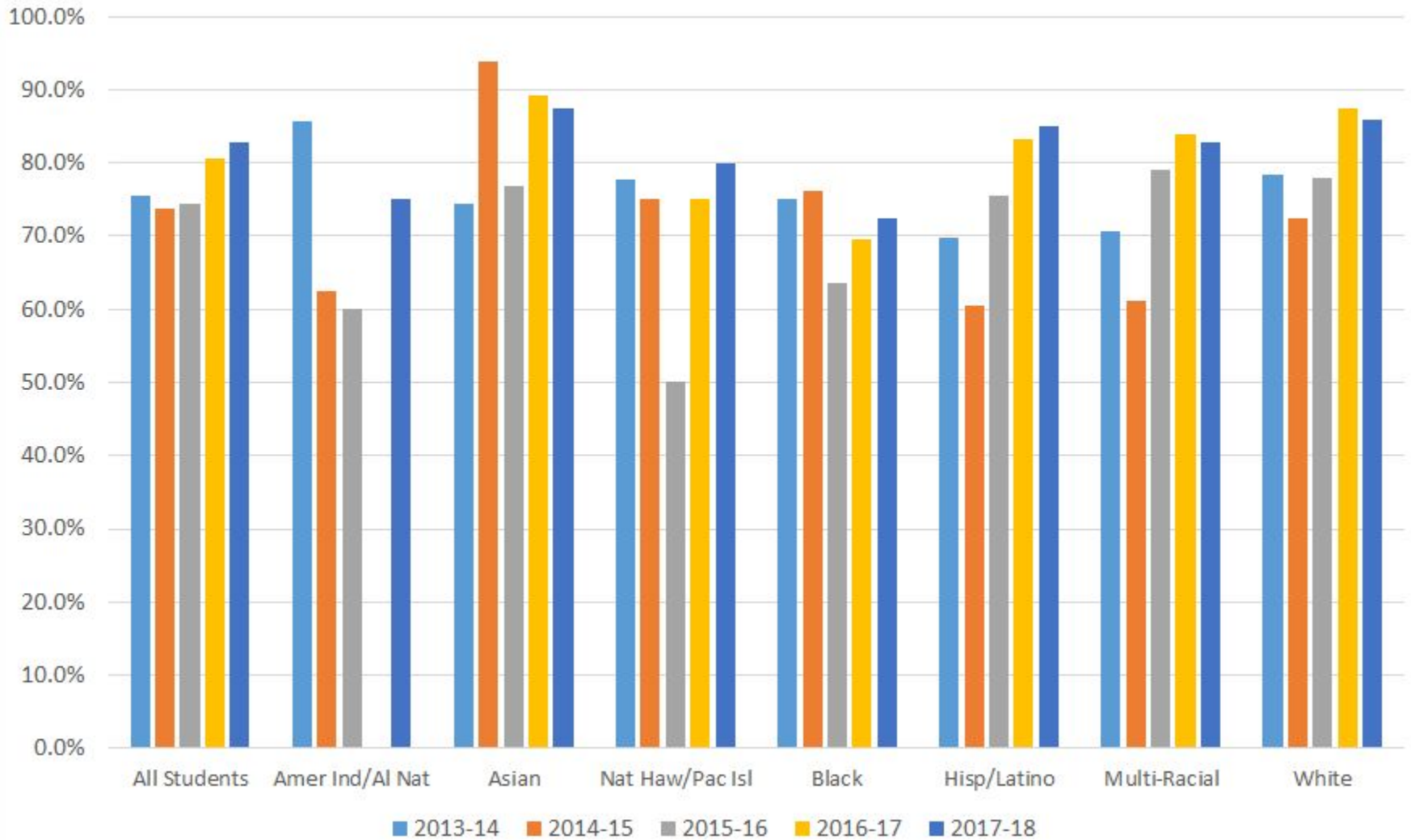


Lincoln 4-Year Cohort Graduation Rates by Student Program



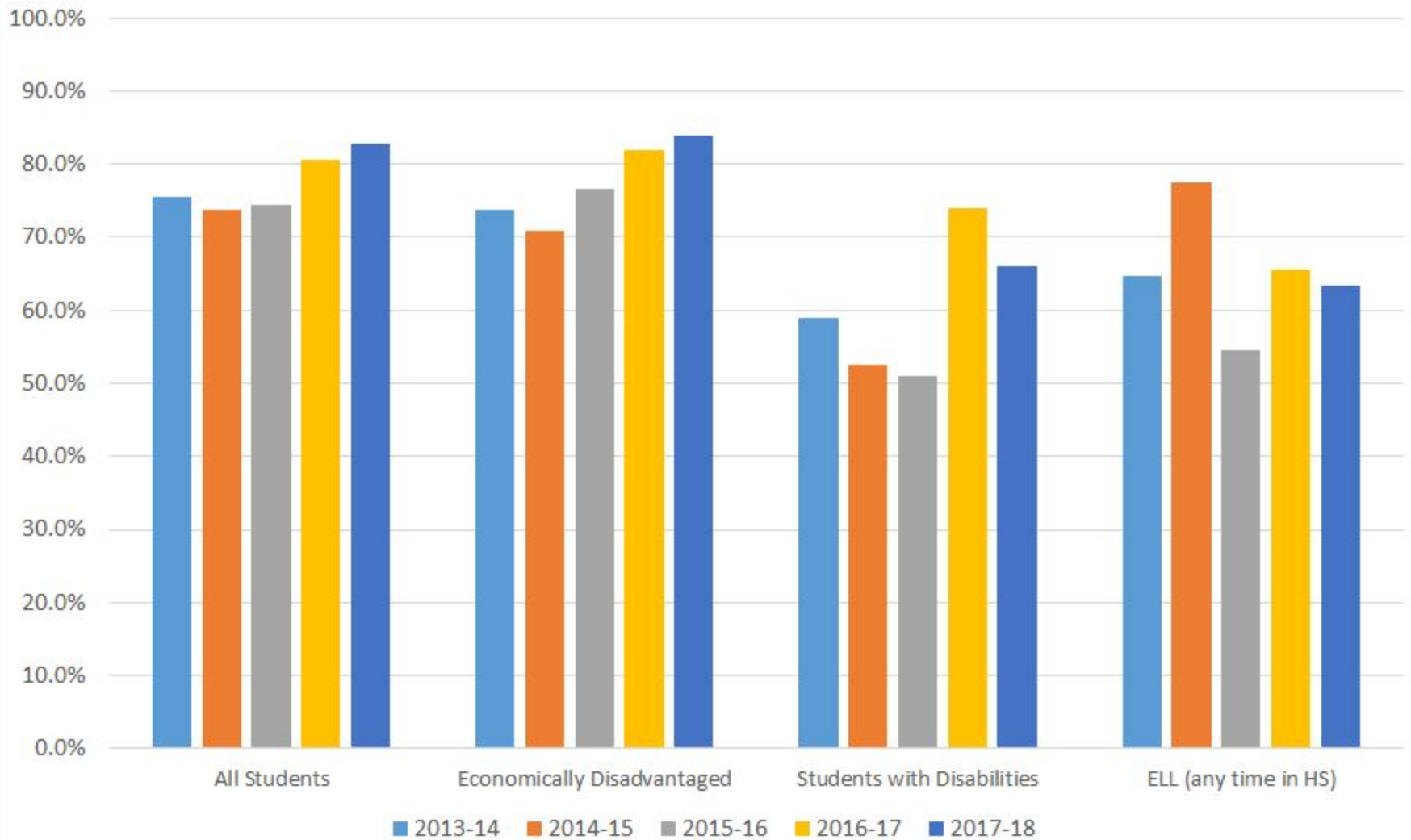


Madison 4-Year Cohort Graduation Rates by Race/Ethnicity





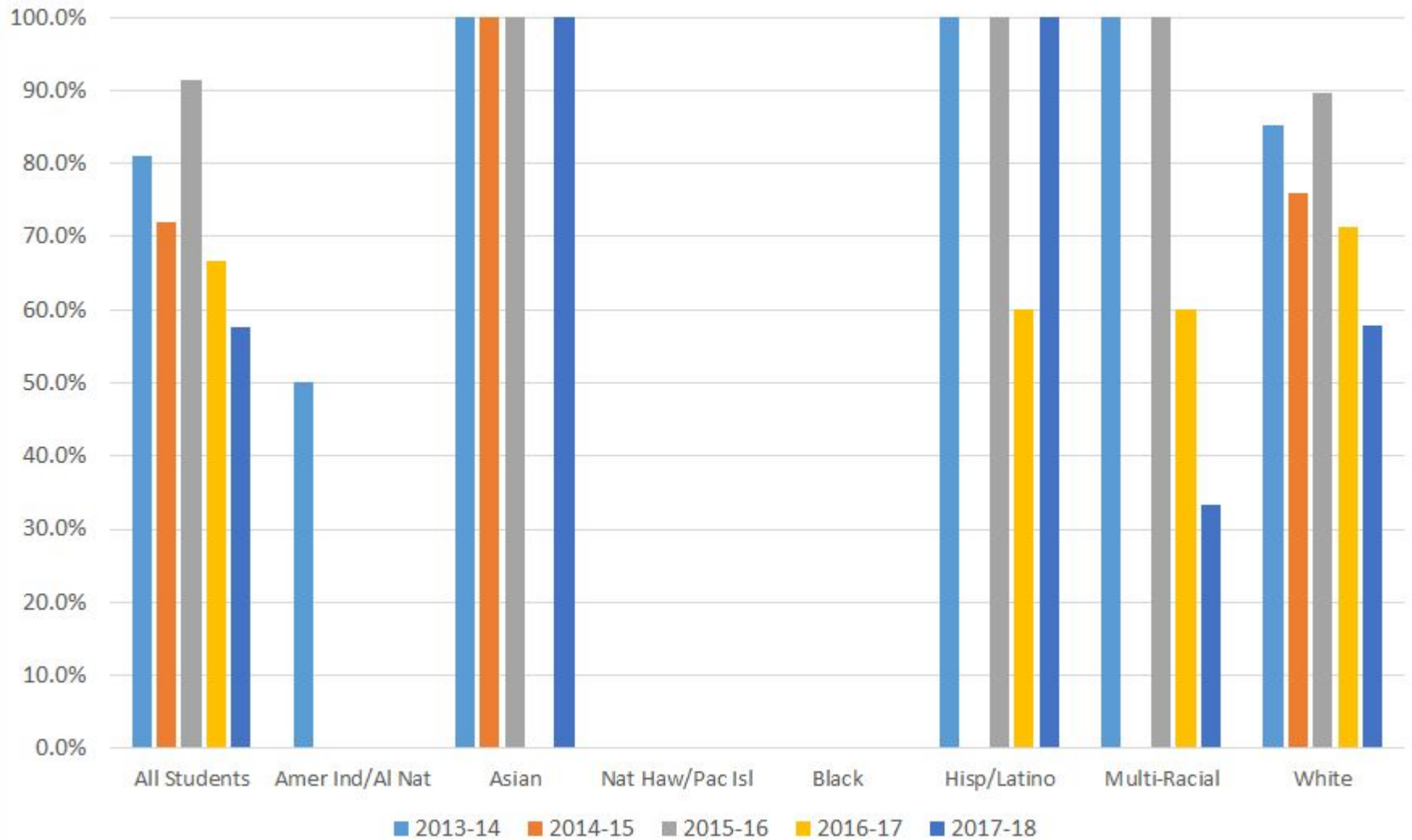
Madison 4-Year Cohort Graduation Rates by Student Program





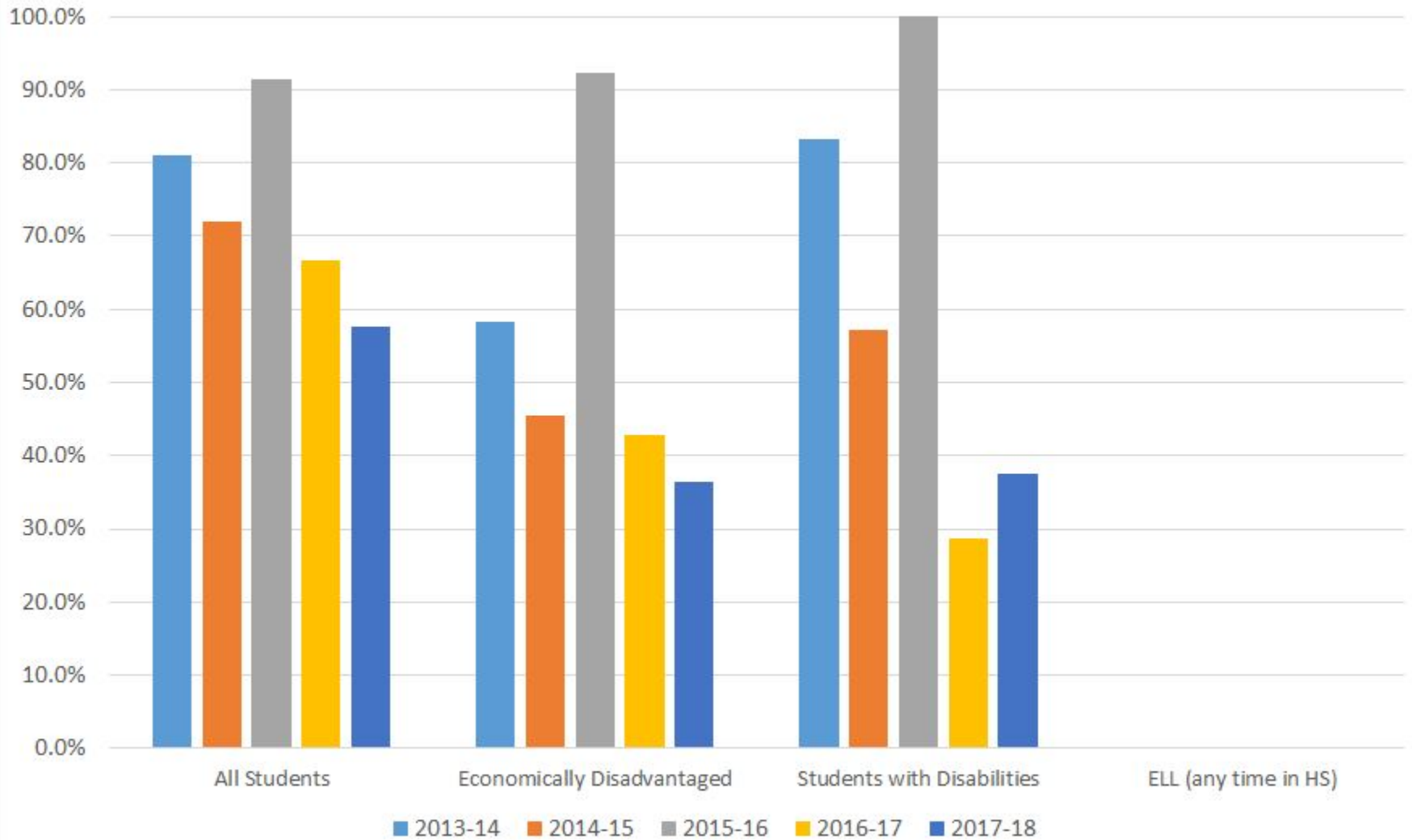
PORTLAND PUBLIC SCHOOLS

MLC 4-Year Cohort Graduation Rates by Race/Ethnicity





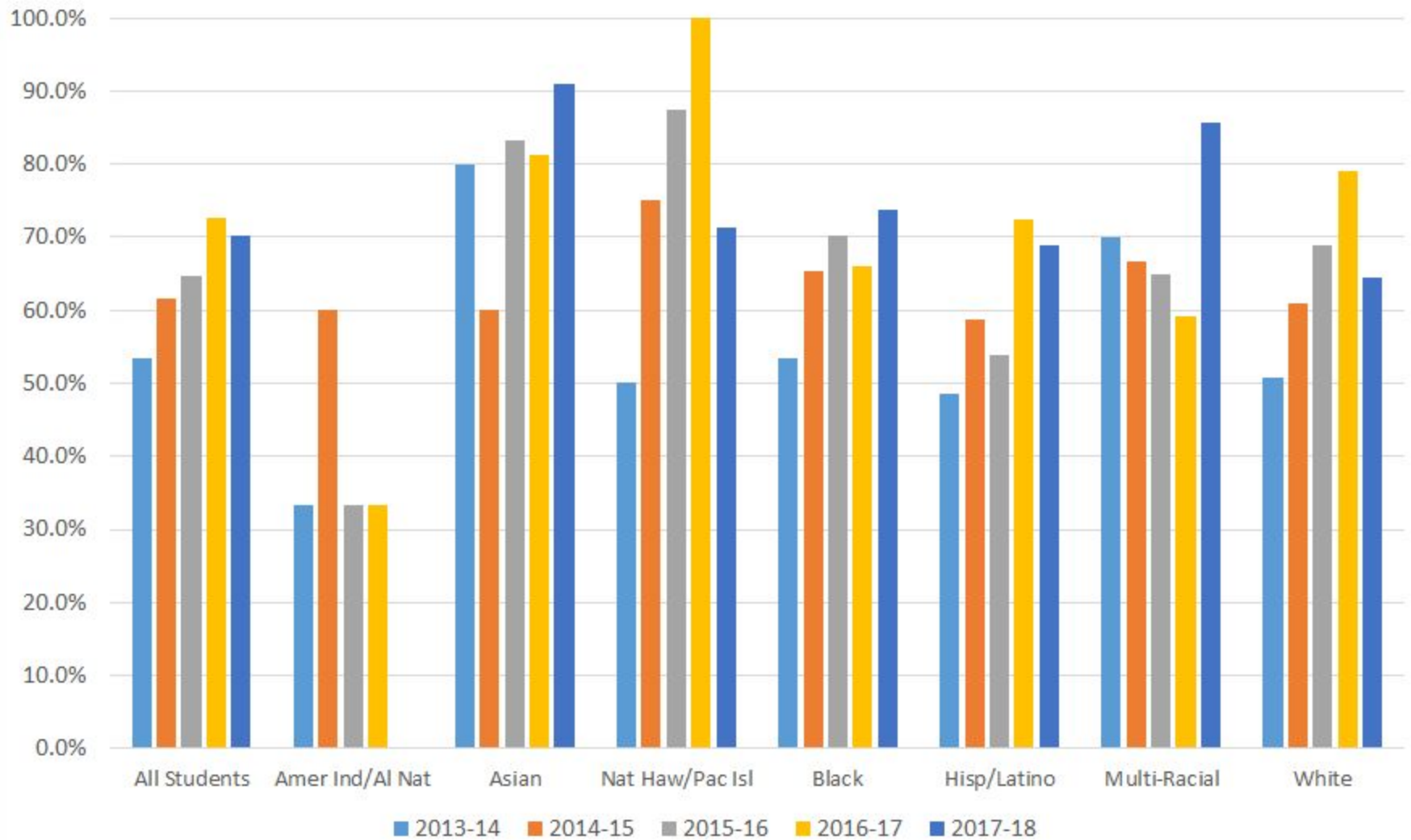
MLC 4-Year Cohort Graduation Rates by Student Program





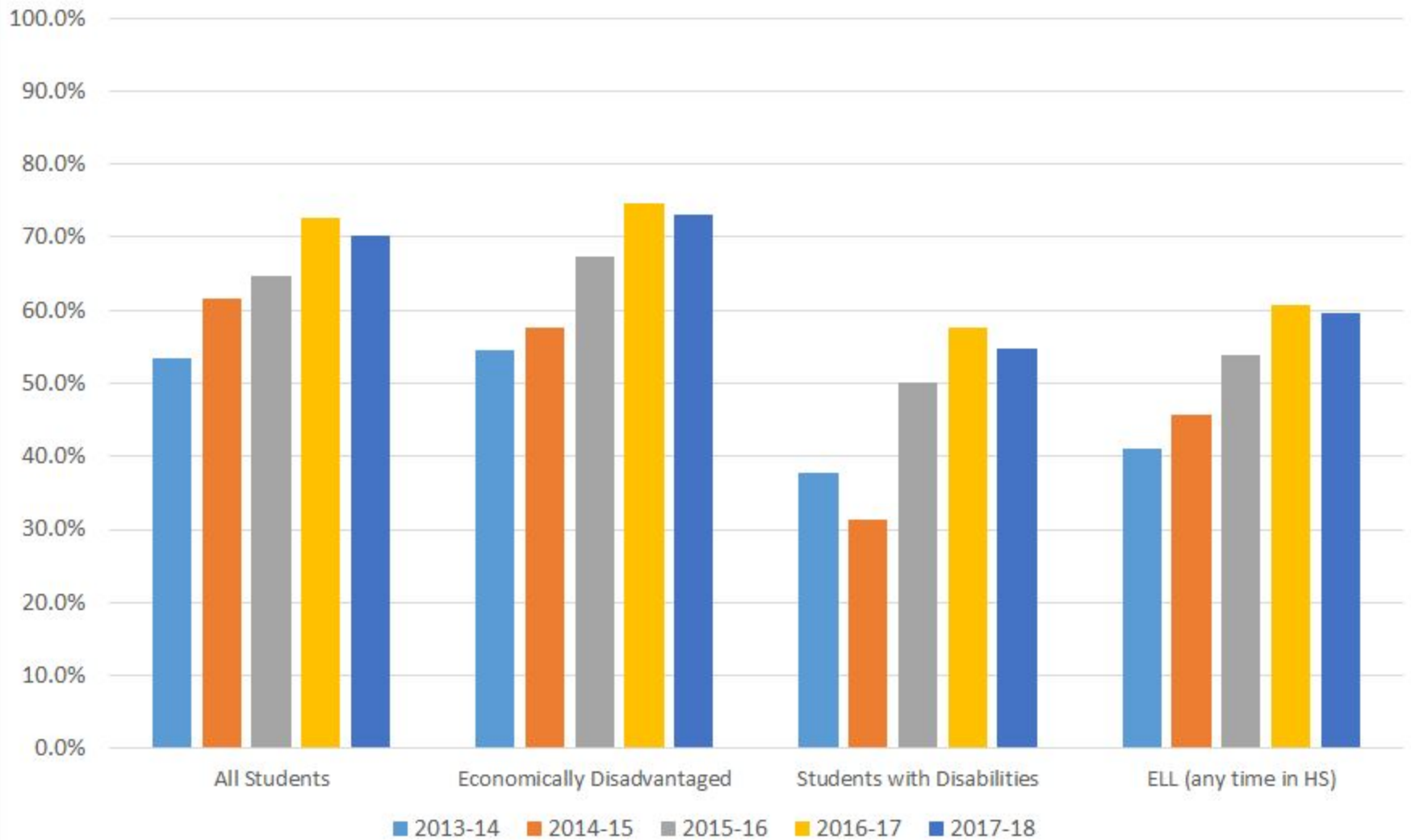
PORTLAND PUBLIC SCHOOLS

Roosevelt 4-Year Cohort Graduation Rates by Race/Ethnicity



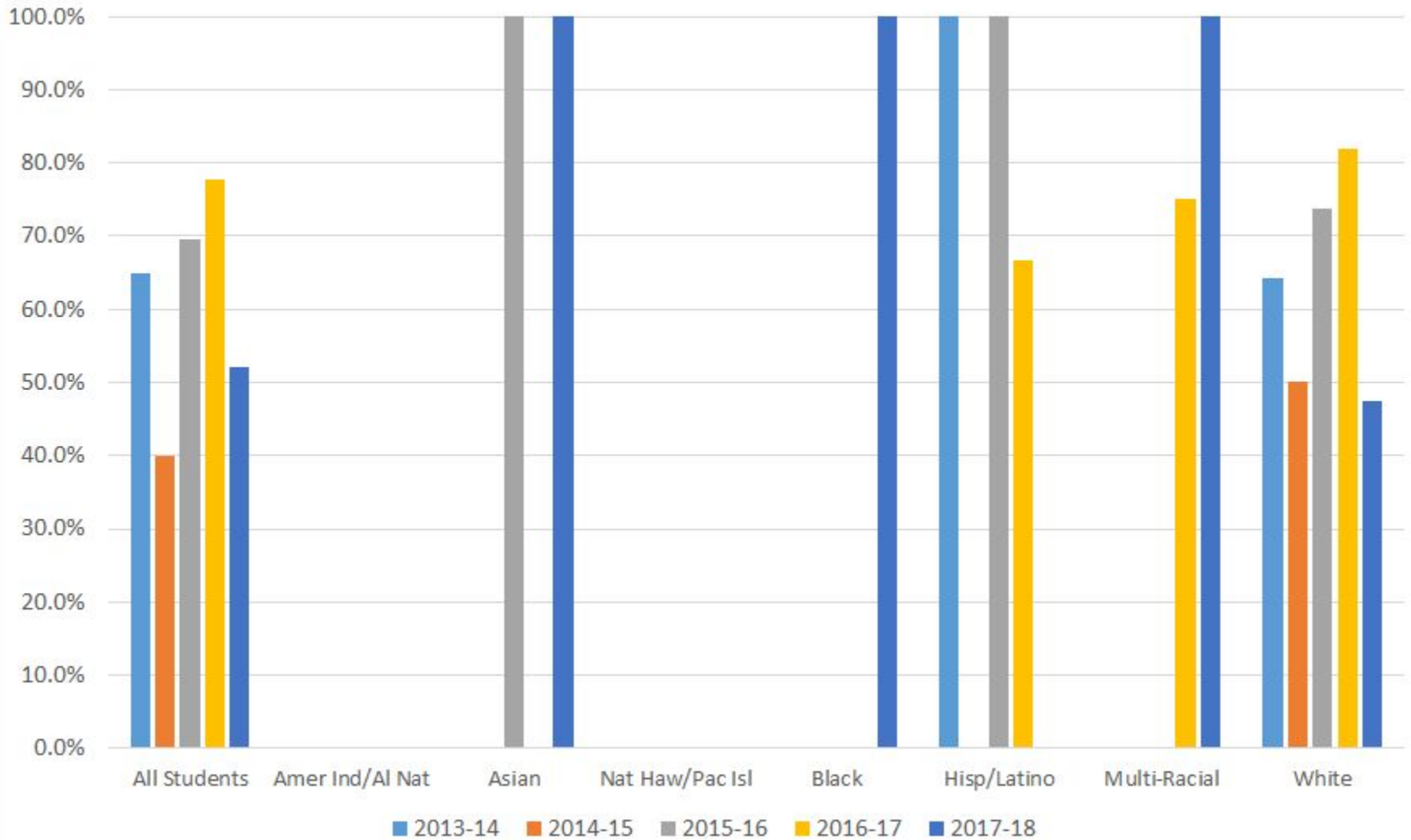


Roosevelt 4-Year Cohort Graduation Rates by Student Program



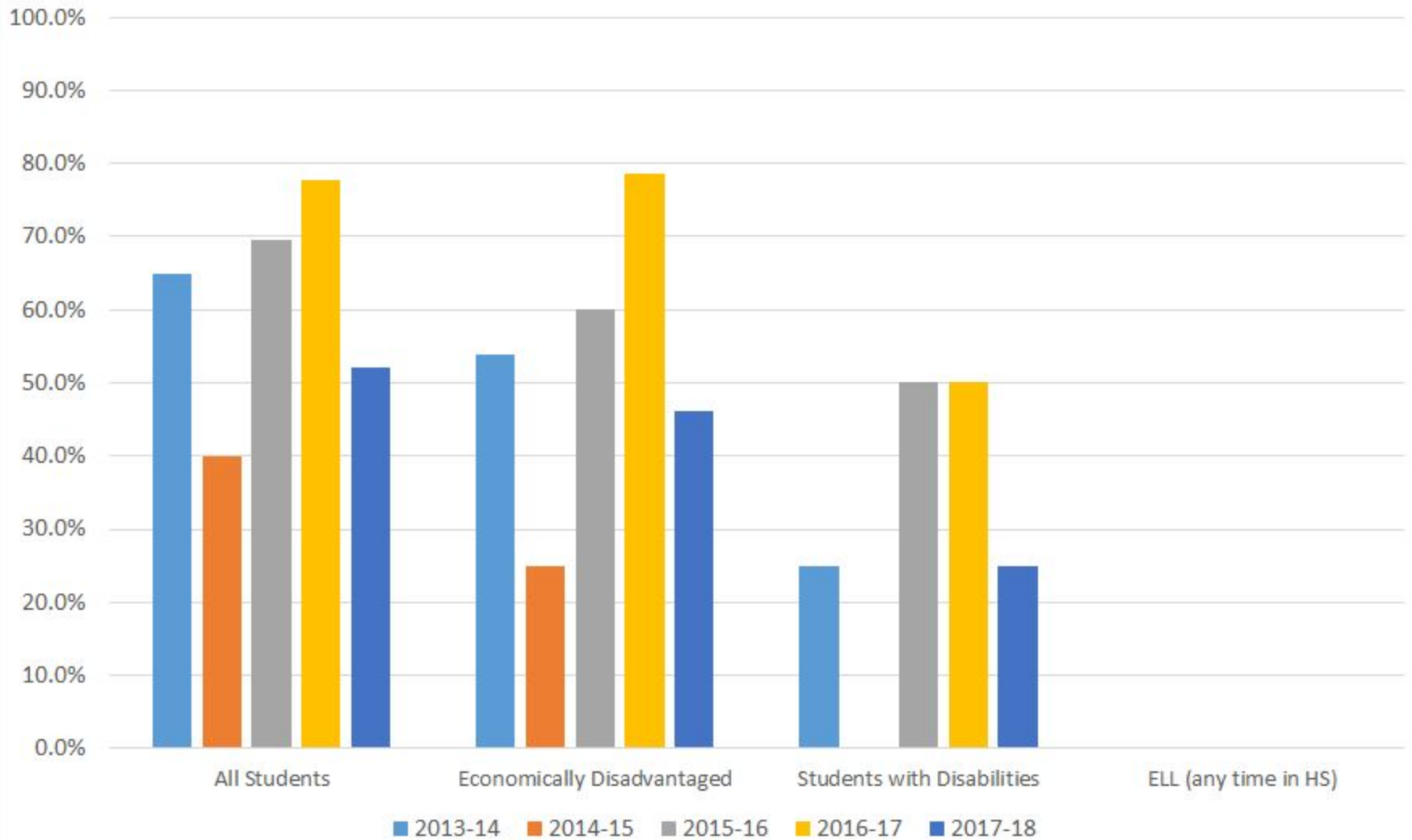


Trillium 4-Year Cohort Graduation Rates by Race/Ethnicity





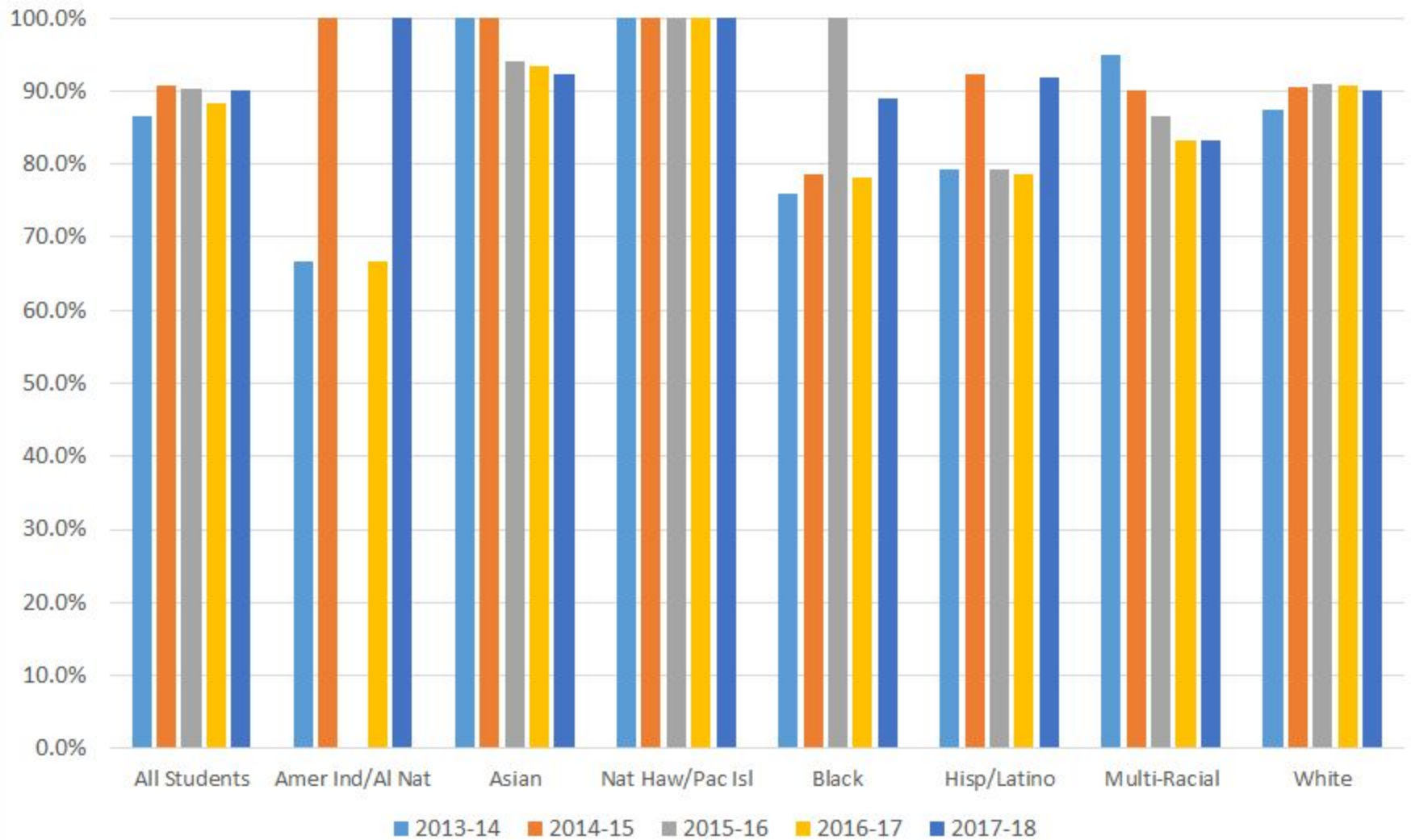
Trillium 4-Year Cohort Graduation Rates by Student Program





PORTLAND PUBLIC SCHOOLS

Wilson 4-Year Cohort Graduation Rates by Race/Ethnicity





Wilson 4-Year Cohort Graduation Rates by Student Program

