



# Board of Education Informational Report

## MEMORANDUM

**Date:** January 29, 2019

**To:** Members of the Board of Education

**From:** Dr. Yvonne Curtis, Deputy Superintendent

**Subject:** PPS 2017-18 Graduation Rates

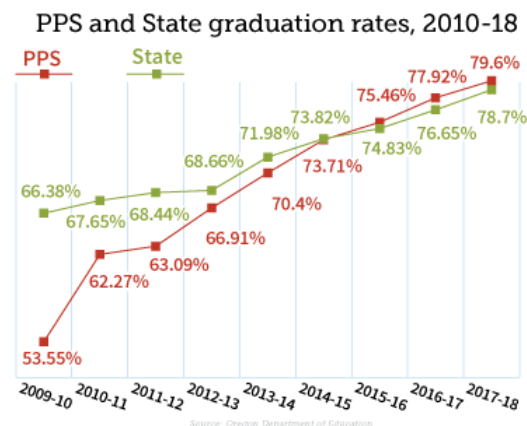
---

On January 24, 2019, the Oregon Department of Education released graduation rates for all Oregon school districts. These results are one key indicator of progress toward the District's goal to prepare all students for life, college and career, and to contribute to their communities. The following summarizes key data points on the District's performance.

### Graduation Rates: Overall District Performance

The overall PPS four-year cohort graduation and five-year completion rates continue to grow:

- **Sustained growth.** For the ninth year in a row, PPS graduation rates have increased. 2017-18 4-year cohort graduation rate is 79.6%, up 1.7 percentage points over the previous year.
- **PPS overtook the Oregon State rate for the third year in a row.** The PPS graduation rate was higher than the Oregon state rate (78.7%).
- **Since 2009-10, the PPS graduation rate has improved more than 26 percentage points,** up from 53.5%.
- **Black and African American students posted some of the strongest gains:** 70.6%, an increase of nearly 6 percentage points, and more than 2 points above the statewide rate.



## ***Performance Disaggregated by Race, Economically Disadvantaged Status, Special Education Status, and English Learner Status***

As part of the District's commitment to equity, we disaggregate our indicators by race/ethnicity, students who are economically disadvantaged, students receiving Special Education services, and students who are English language learners in order to track progress toward closing achievement and opportunity gaps.

### Key Data Points:

- Economically disadvantaged students: 73.0%, increase by 1.5 percentage points
- Special education students: 59.3%, decline by 4.7 percentage points from the previous year, but 2 points above two years ago
- English learners: 57.5%, decline of 6 percentage points from previous year, but 6 points above two years ago (note that the Oregon Department of Education definition of English Learners in this context has changed over the past few years, which may account for some of the fluctuations in number)
- Black/African American students increased by 5.9 percentage points
- Multiracial students increased by 2.6 percentage points
- American Indian/Alaska Native students declined by 13.2 percentage points (39 students)
- Native Hawaiian/Pacific Islander students declined by 6.8 percentage points (27 students)
- Graduation rates increased slightly (by 0.3 percentage points) for Hispanic/Latino students
- **More late joiners are graduating.** 17-19% of PPS cohorts in recent years are made up of students who join after 9th grade ("late joiners"). Grad rates for this group have jumped rapidly at PPS, rising by 23 points since 2012-13.
- **Gaps remain for Native American, Black, and Latino students.** While PPS has made substantial strides in improving the overall graduation rates, and the graduation rate for Black and African American students, gaps among historically underserved racial groups largely remain.

## ***School Performance***

At a school level, five schools posted gains (Cleveland, Jefferson, Madison, Wilson, Alliance); four posted decreases (Franklin, Lincoln, Roosevelt, MLC); and two were flat (Benson, Grant). Individual school highlights include:

- Alliance High School posted the largest year-to-year increase in graduation rates (5 percentage points)
- For the fourth year in a row, Jefferson High School's graduation rate was 80% or higher.

## ***Programs Making a Difference***

**Double Blocking:** All comprehensive and focus option high schools have double blocked schedules with 4 classes a day, on rotating A and B days with an 8 period schedule. Double block scheduling enable teachers the ability to spend more time with each student, allowing more time for individualized instruction and deeper learning.

**Ninth Grade Academies/Freshman Success Teams:** Research shows that on-track students are more than twice as likely to graduate in four years than their off-track peers. A successful ninth-grade experience provides a place where students experience a feeling of belonging, nurturing, and pride and

overall positive social interaction that may improve school attendance and the possibility for enhanced academic achievement.

Data Point	2016-17	2017-18	Trend
Ninth-grade on-track rate	85%	92%	Increase 7 points

**Career & Technical Education (CTE):** In 2013-14, there were a total of 19 CTE Programs of Study in 6 high schools. Since then, significant investment in CTE has increased the number of career-focused learning opportunities available to students. Students who complete just one credit in CTE graduate at an average rate of 88%.

Data Point	2016-17	2017-18	Trend
# of students enrolled in CTE	6533	7595	Increase of 1062 students

**Reconnection Services & Center:** The purpose of Reconnection Services is to re-engage students, who are in the process of leaving our school system or who have left, with educational opportunities including enrolling them in our alternative options. If students cannot immediately enroll in a school, Reconnection Center provides students with academic assessments, credit evaluation and helps to identify the best fit for the student. Students then attend classes at Reconnection Center until they are enrolled at a school. In 2017-18, 35 students completed high school after being re-engaged.

Re-engaging Opportunity Youth in 2017-18			
Contacted	Completed Intake	Placed	Persisted
1255	867	573	397

**Advanced coursework:** High schools have significantly increased the number of advanced courses: Advanced Placement (AP), International Baccalaureate (IB) and dual credit offered in the last four years. Strategies for increasing the enrollment of students in these courses include teachers and counselor encouragement, targeted recruitment from culturally specific student groups and creating an advanced course for all, such as all Grant 12<sup>th</sup> grade students take Writing 121 and all Cleveland 11<sup>th</sup> and 12<sup>th</sup> grade take IB Language Arts.

Data Point	2016-17	2017-18	Trend
# of students enrolled in advanced (AP/IB/dual credit) coursework	5788	6236	Increase of 448 students

This is not a complete list, and there are many factors that contribute to higher graduation rates, including excellent and consistent teaching and leadership, student and classroom supports. Although our trend is good, we know we have much more work ahead to ensure all students have the opportunity to walk across the stage ready for the rigors of college, careers and life.



PORTLAND PUBLIC SCHOOLS

# 2017-18 Graduation Rates

**January 29, 2019**





# Highlights

- Graduation Rate is 79.6%, up 9 points since 2013-14
- Black/African American students up nearly 6 points from 2016-17



# Highlights

- Alliance High School posted the largest year-to-year increase in graduation rates (5 percentage points)
- For the fourth year in a row, Jefferson High School's graduation rate was 80% or higher.



# Key Strategies for Success

- **Double Blocking** -- Allows teachers to spend more time with each student for individualized instruction and deeper learning
- **Freshman Success Teams** -- Keeping 9th graders engaged and on track, one student at a time.

Data Point	2016-17	2017-18	Trend
Ninth-grade on-track rate	85%	92%	Increase 7 points

- **Student Engagement Coaches** -- Addition of Student Engagement Coaches funded by Measure 98 to provide improvement in attendance systems at schools and case management for struggling students.





# Key Strategies for Success

- **Advanced coursework** -- The number of students taking AP, IB, dual credit and college classes increased by 450 students -- nearly 10 percent higher than last year.
- **Reconnection Services & Center** re-engages students who have left school and provides them with with academic assessments, credit evaluation and school placement. In 2017-18, 35 students completed high school after being re-engaged.
- **Career and Technical Education** -- Increased number of students taking CTE classes by more than 1,000.



# Areas of Focus

- Special education students: 59.3%, decline by 4.7 percentage points from the previous year, but 2 points above two years ago
- English learners: 57.5%, decline of 6 percentage points from previous year, but 6 points above two years ago



# 4-Year Cohort Graduation Rates

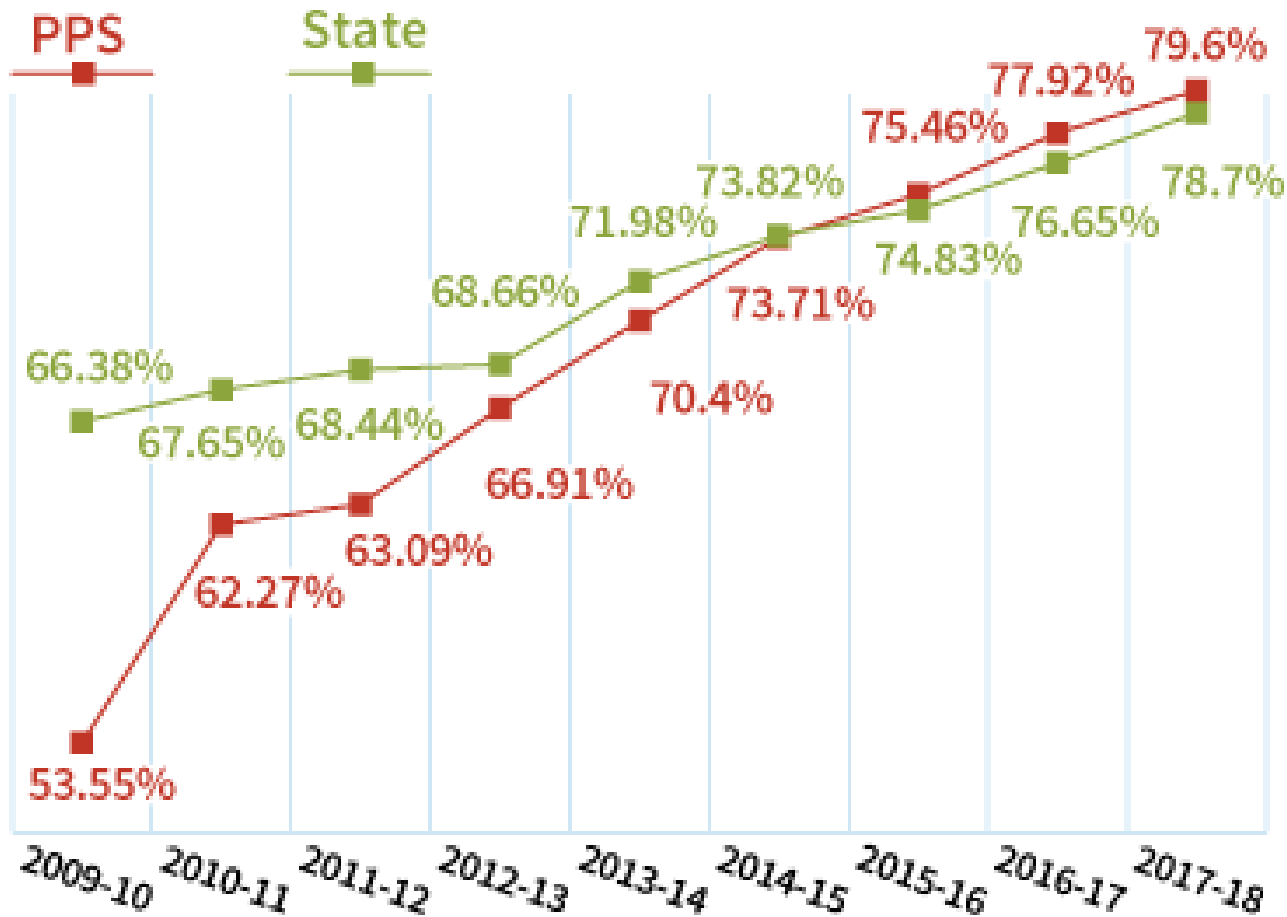
- In 2008-09, ODE began tracking graduation rates using the cohort graduation rate method
  - Follows a class of students through four years of high school and measures the percentage that graduate on-time
  - More rigorous than previous method
  - Students earning Regular or Modified diplomas count as graduates
  - Students earning GEDs or Extended diplomas are not counted as graduates, but are considered completers





# Nine years of higher rates

PPS and State graduation rates, 2010-18

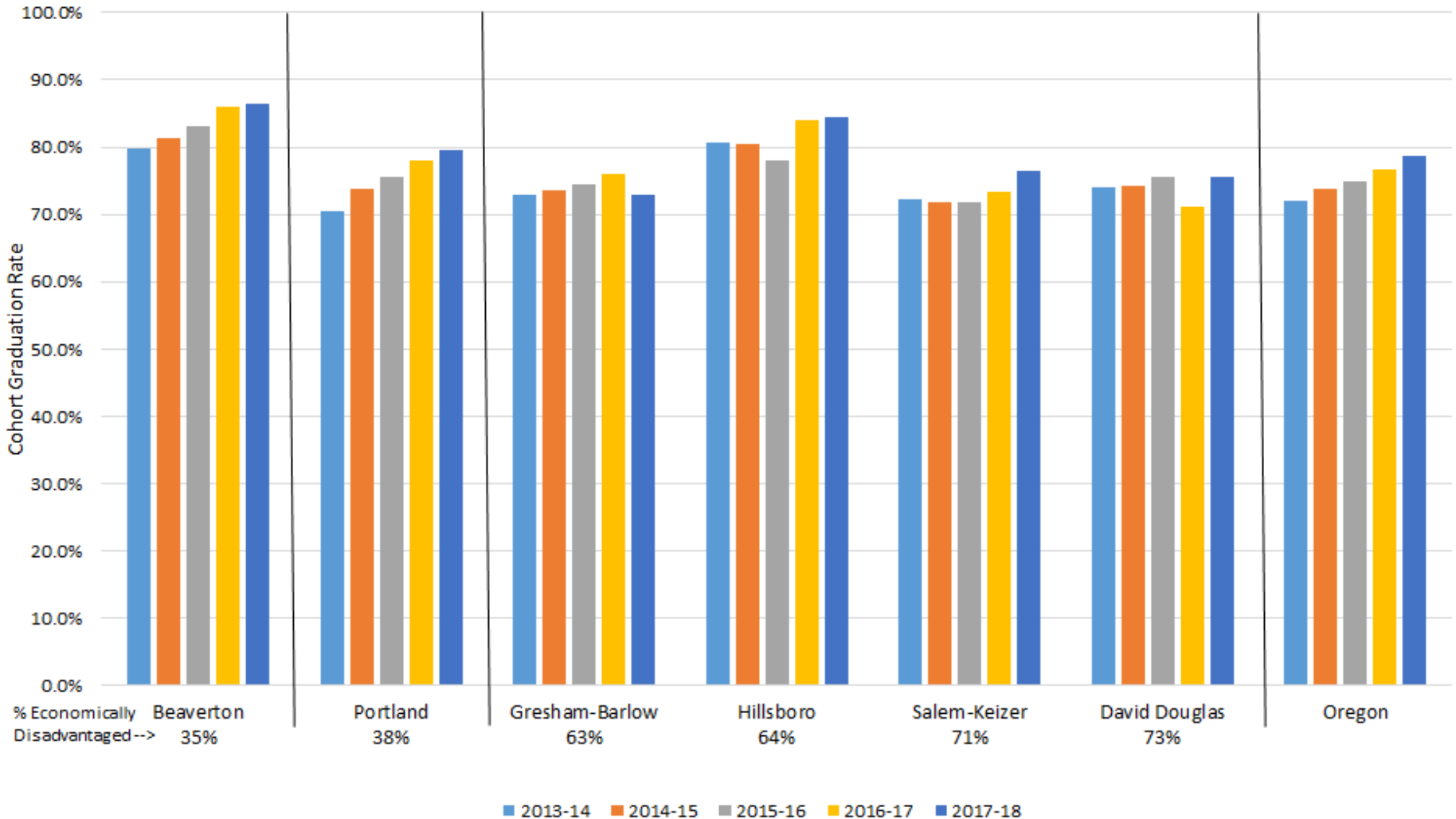


Source: Oregon Department of Education



# PPS, Oregon and Comparison Districts

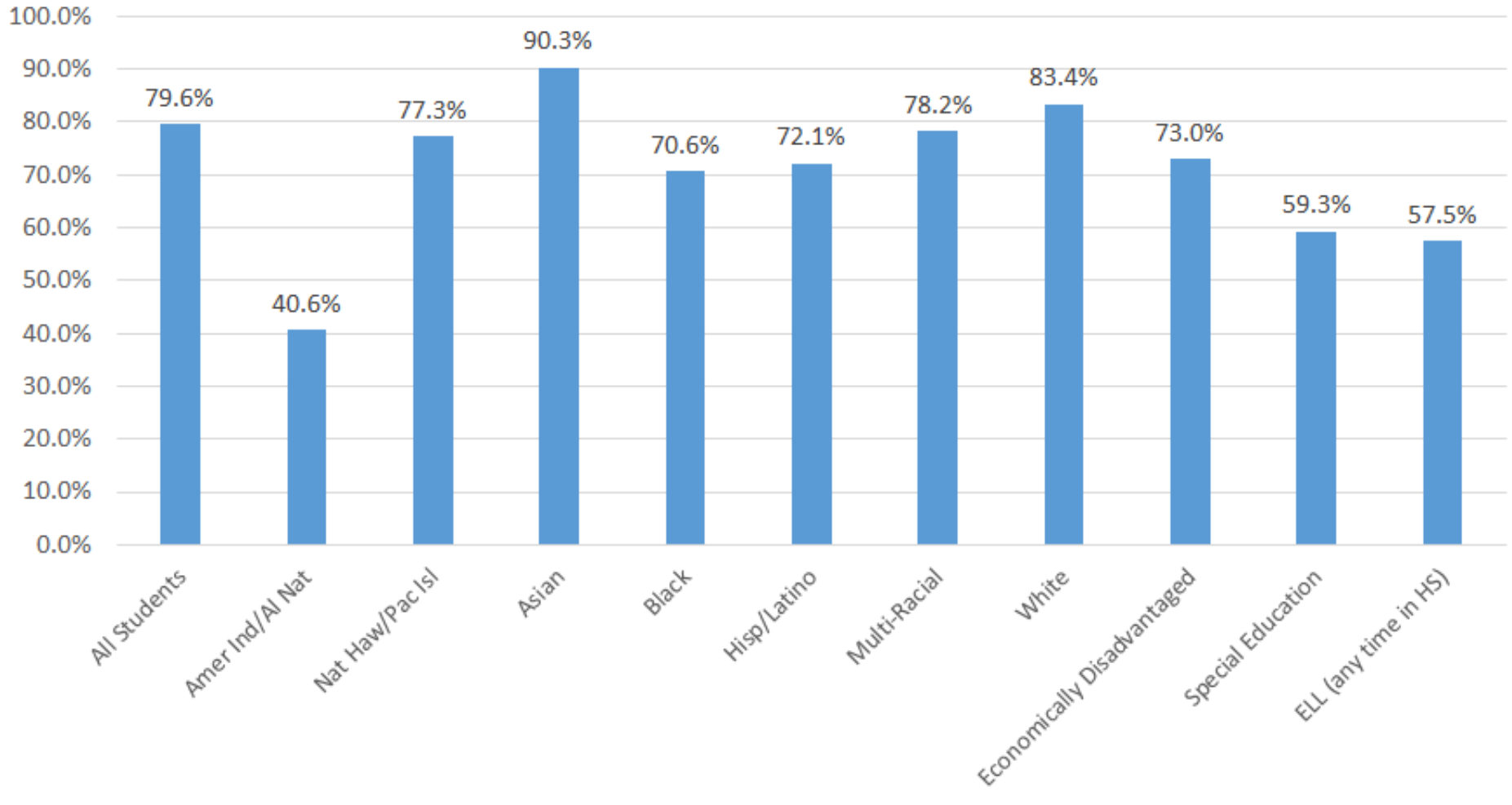
4-Year Cohort Graduation Rates: PPS, Oregon and Select Comparison Districts





# PPS Race/Ethnicity Gap

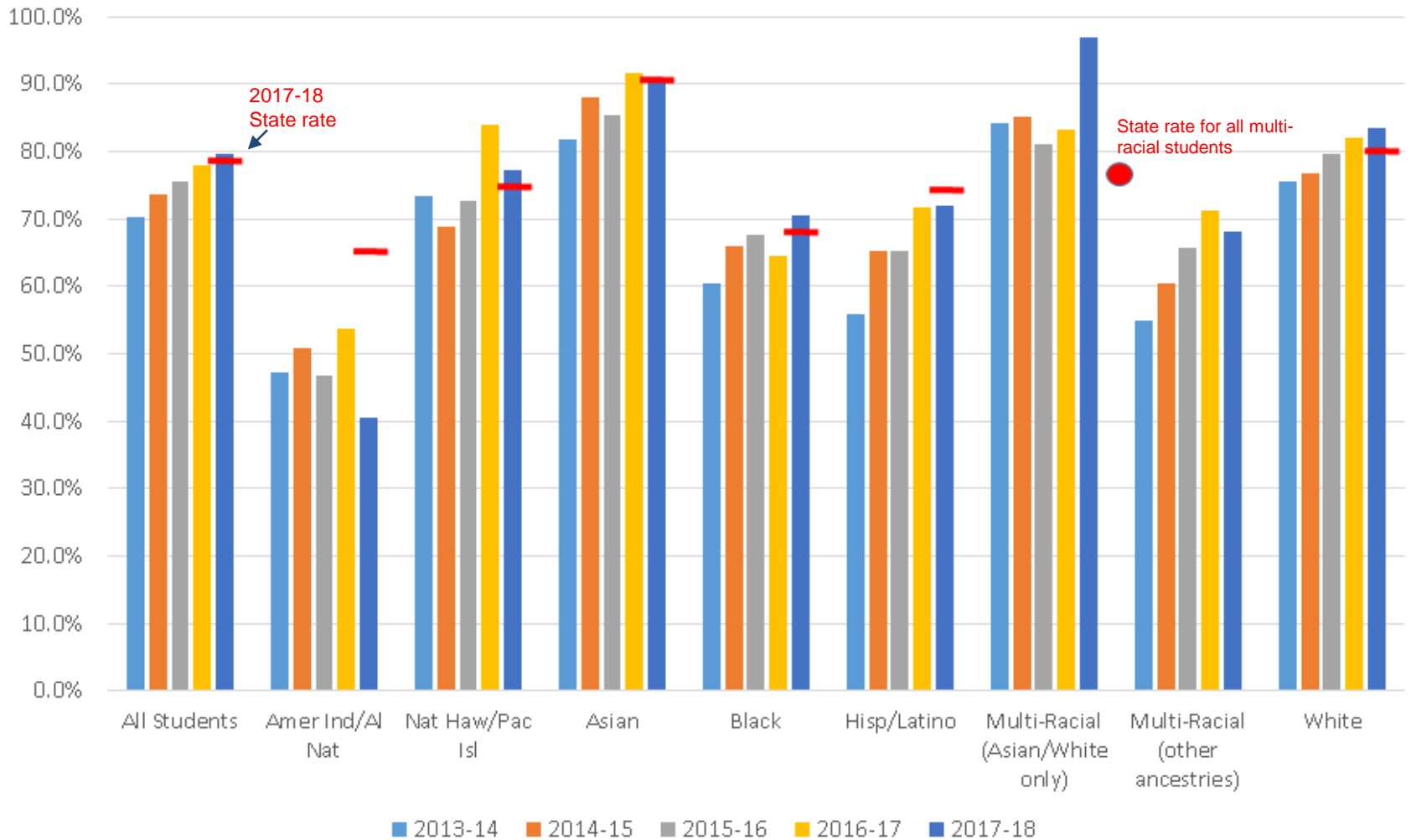
PPS Graduation Gap by Race/Ethnicity 2017-18





# PPS Graduation Rates by Race/Ethnicity

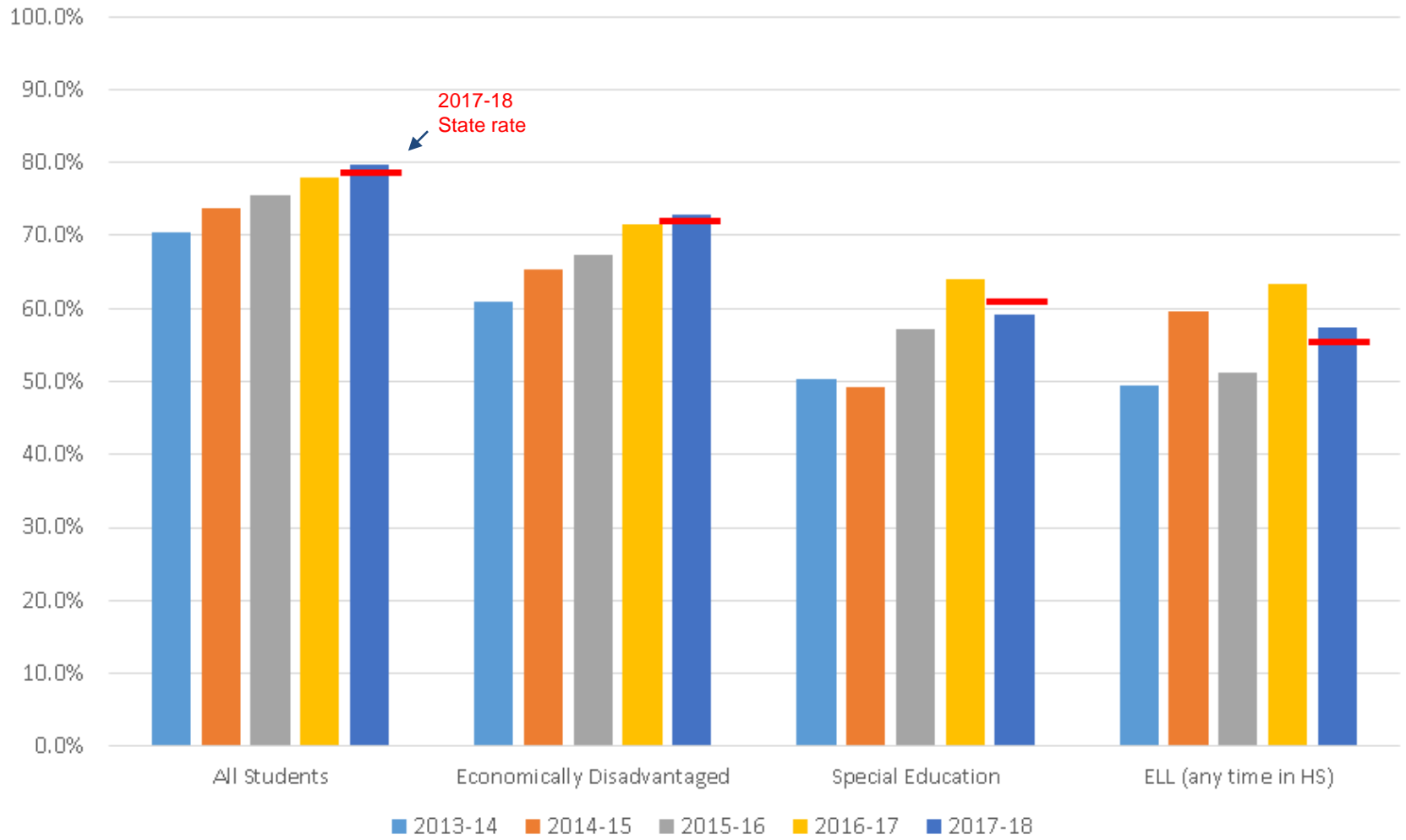
PPS 4-Year Cohort Graduation Rates by Race/Ethnicity





# PPS Graduation Rates by Program

PPS 4-Year Cohort Graduation Rates by Student Program

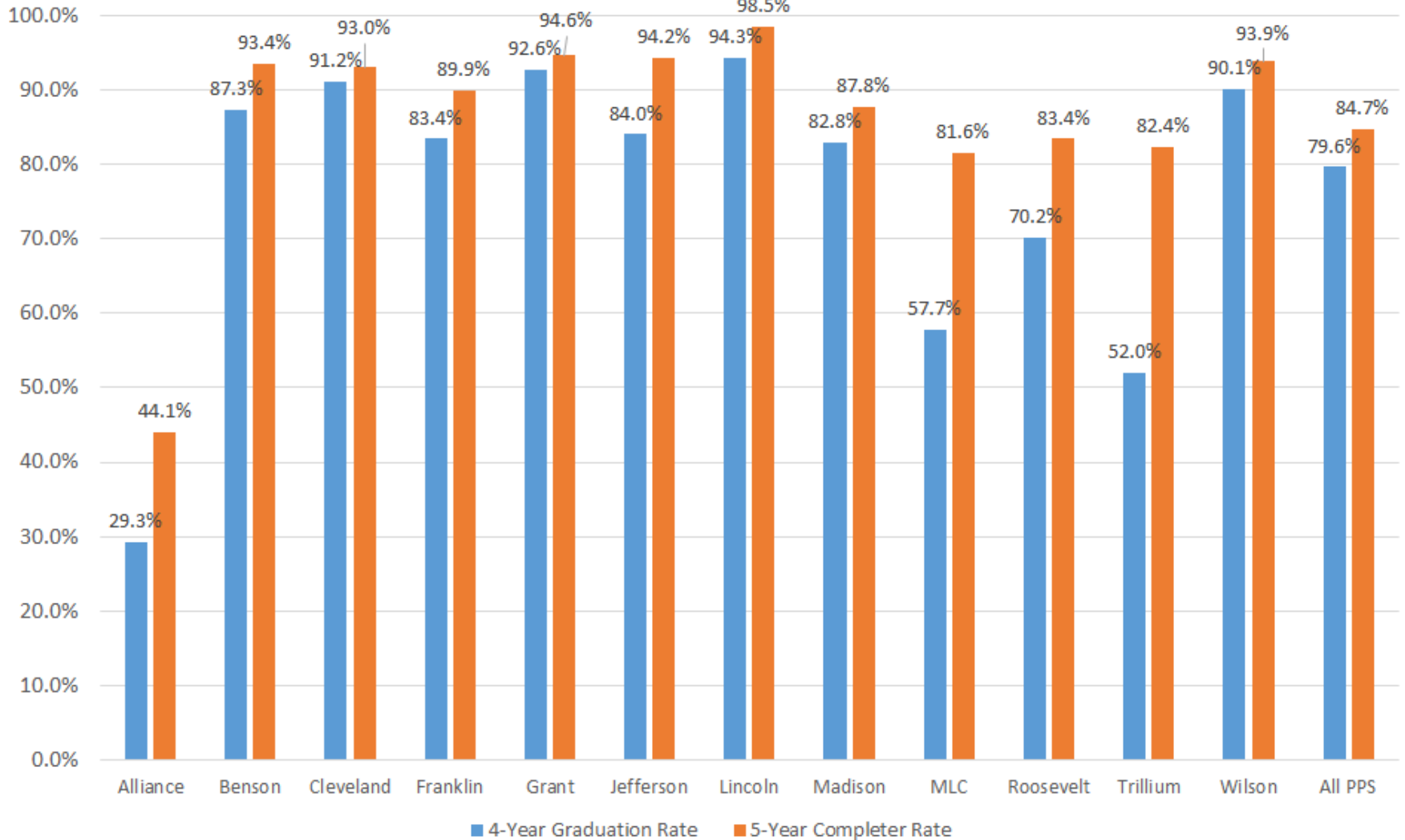






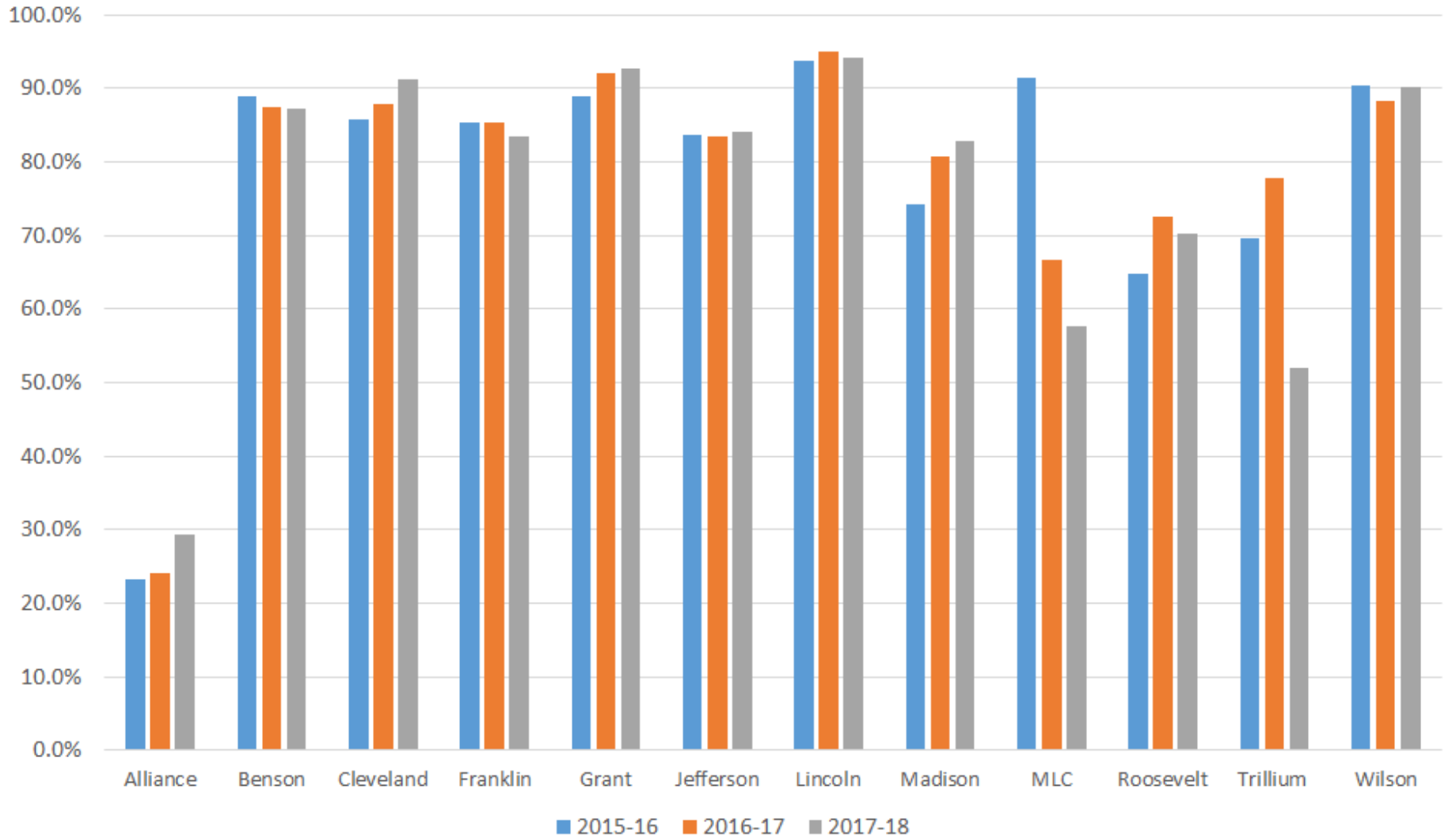
# Graduation and Completer Rates by School

2017-18 Four-Year Graduation and Five-Year Completer Rates by School





## PPS 3-Year Graduation Trend by School





# Next Steps

- Implement culturally relevant curriculum
- Improve school climate and reduce chronic absenteeism
- Prepare all students for post-secondary success
- Continue to implement grade level collaborative instructional teacher teams
- Enhance CTE quality, partnerships and sustain successful programs