

# Pandemic EBT for children

Extra grocery money for families, while school is closed

## Who Will Get Pandemic-EBT

### All Students who normally get free school meals

if they are enrolled in a K-12 school, school-based preschool or school-based Headstart that provides National School Lunch

You can get "grab and go" meals while school is closed **AND** get P-EBT to buy groceries.

Immigration status does **NOT** matter for Pandemic-EBT. P-EBT will **NOT** count in a public charge test.

## How Much \$ You Will Get

### Grocery Money

March = \$69 per child  
April = \$126 per child  
May = \$120 per child  
June = \$69 per child

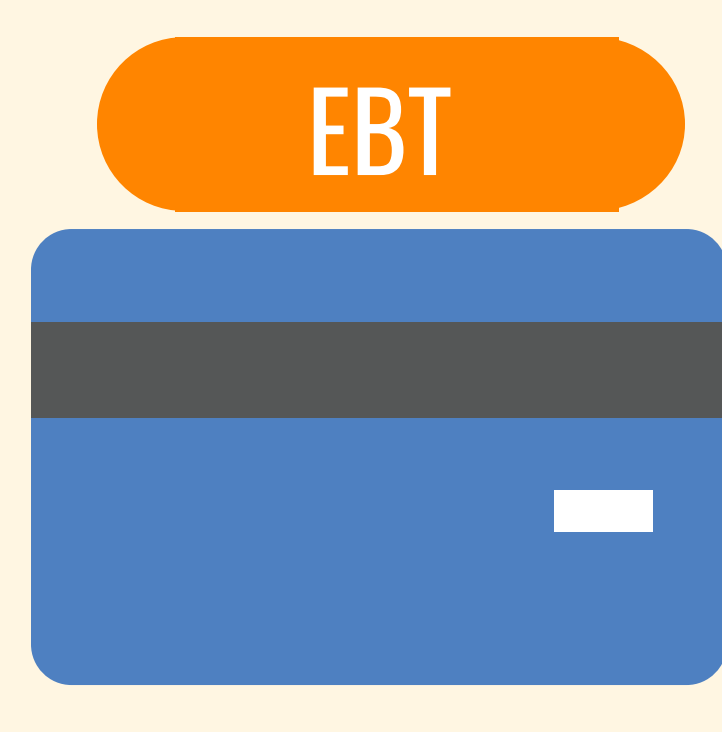
Money will be put on a Oregon Trail card. It works like a debit card to buy groceries at stores and farmers markets.

## What You Need to Do

### If you already get SNAP



You will receive money for each child enrolled in a school that normally serves school lunch



Extra benefits will be automatically added to your Oregon Trail Card



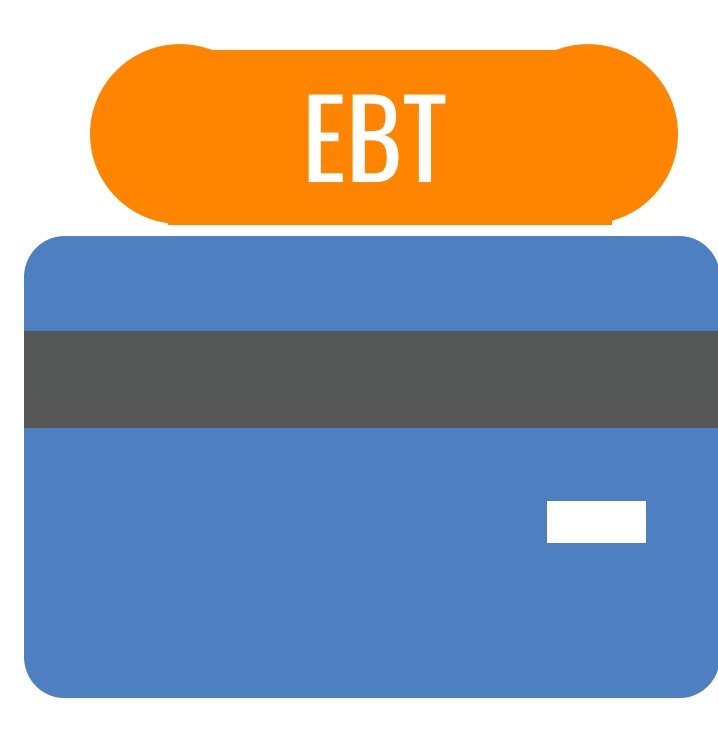
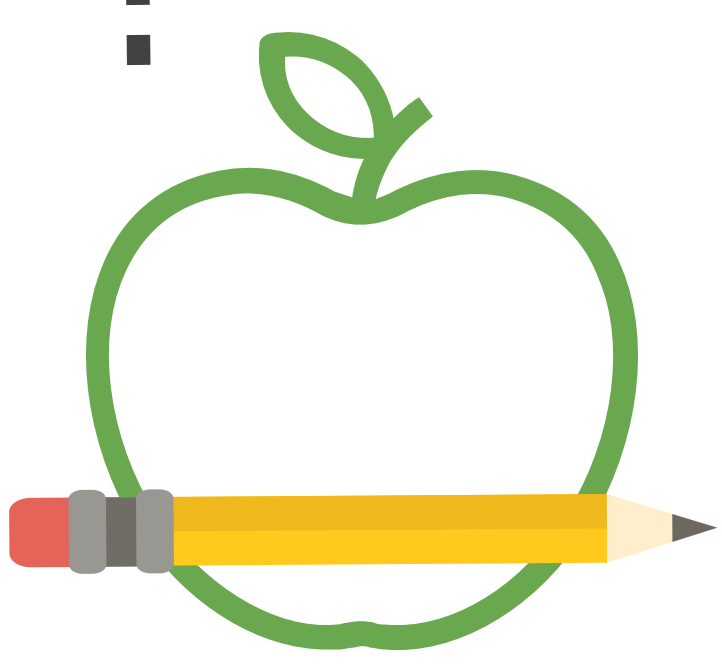
You don't have to do anything! Benefits should load in June

## What You Need to Do

### If you do NOT already get SNAP



### You DO get free school meals



You will automatically be mailed an Oregon Trail Card



Make sure your school has your current mailing address. You should receive a card by July

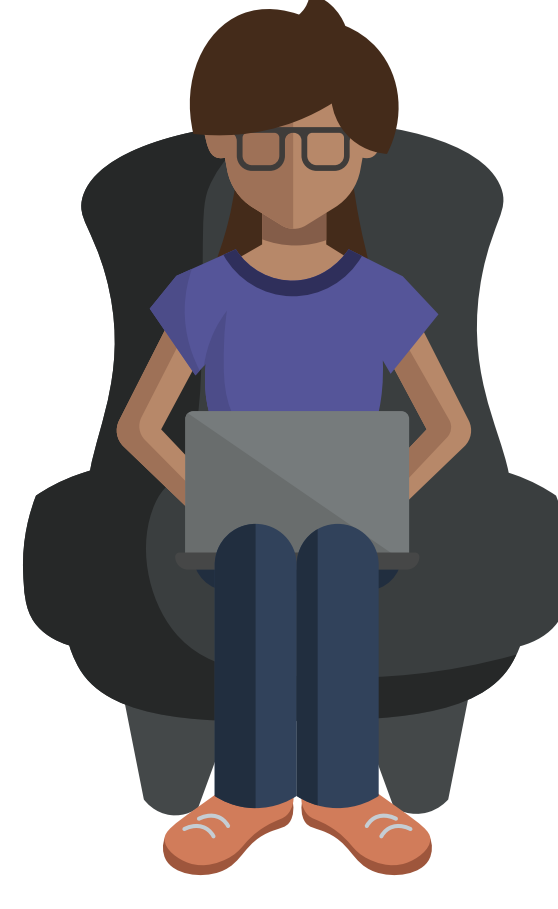
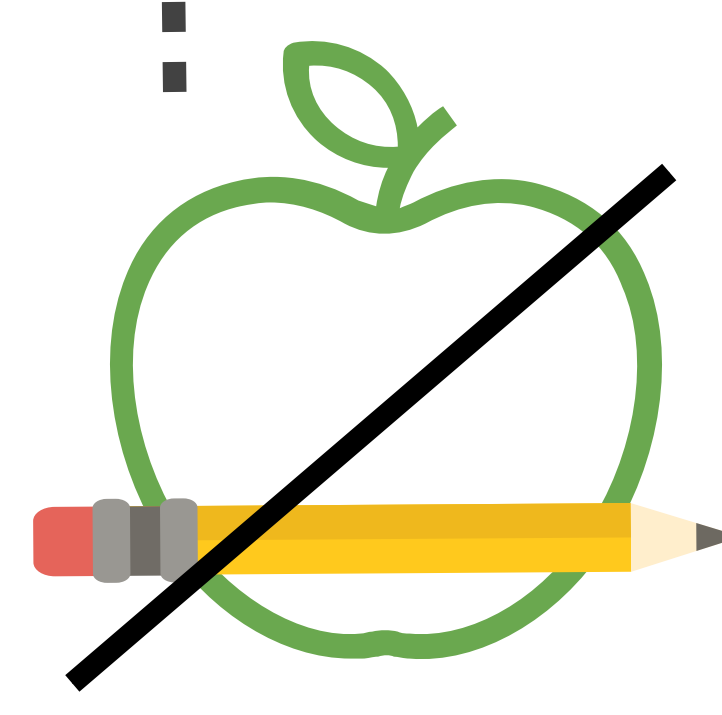
- + If your household qualifies for meals
- or
- + Your whole school gets meals at no charge (Community Eligibility)

## What You Need to Do

### If you do NOT already get SNAP



### You do NOT get free school meals

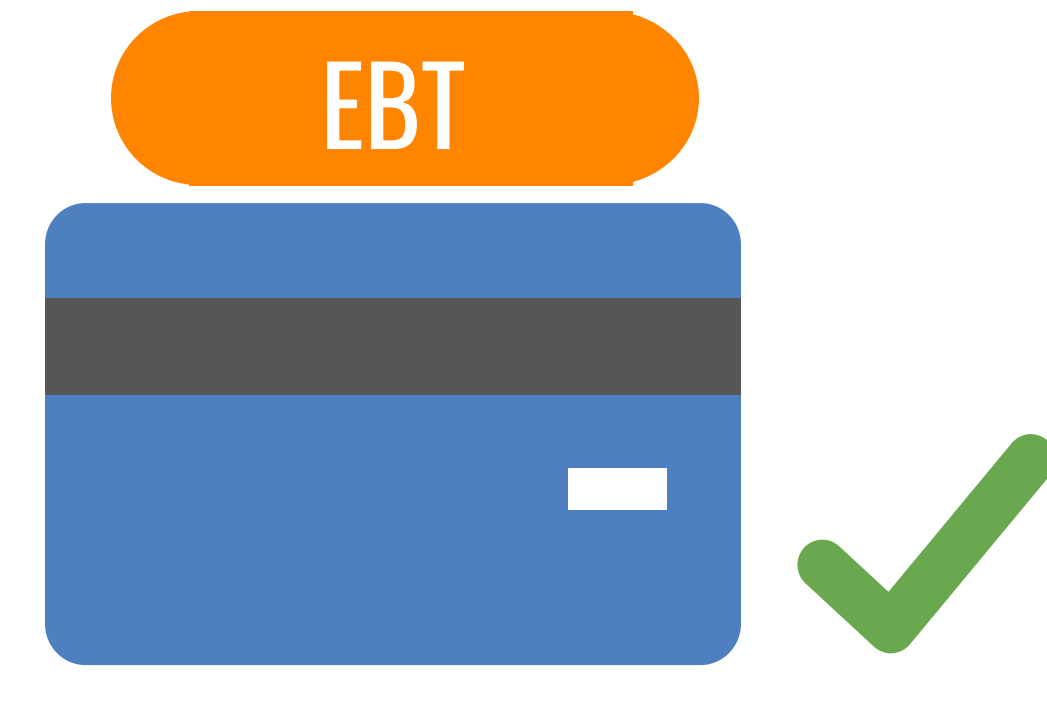


Apply for free school meals by June 30th.

[www.ode.state.or.us/apps/frlapp](http://www.ode.state.or.us/apps/frlapp)

You can apply for SNAP, too

<https://govstatus.egov.com/or-dhs-benefits>



If you qualify, you will be mailed an Oregon Trail Card and get benefits starting that month.

Remember, getting P-EBT and school meals won't impact your immigration status and is not considered in a public charge test.

- + You might be eligible, especially if you've lost income during the pandemic. Apply!
- + If your whole school gets meals at no charge, you are eligible for P-EBT without having to apply, even if your children usually brought lunch from home. See above.

## Stay Safe. Stay Strong. Stay Fed.

[www.oregonhunger.org/covid-19](http://www.oregonhunger.org/covid-19)

## Learn More about P-EBT



Visit <https://govstatus.egov.com/or-dhs-benefits>



Call 2-1-1



Email [EBTschoolmeals@dhsosha.state.or.us](mailto:EBTschoolmeals@dhsosha.state.or.us) for help with your P-EBT benefits