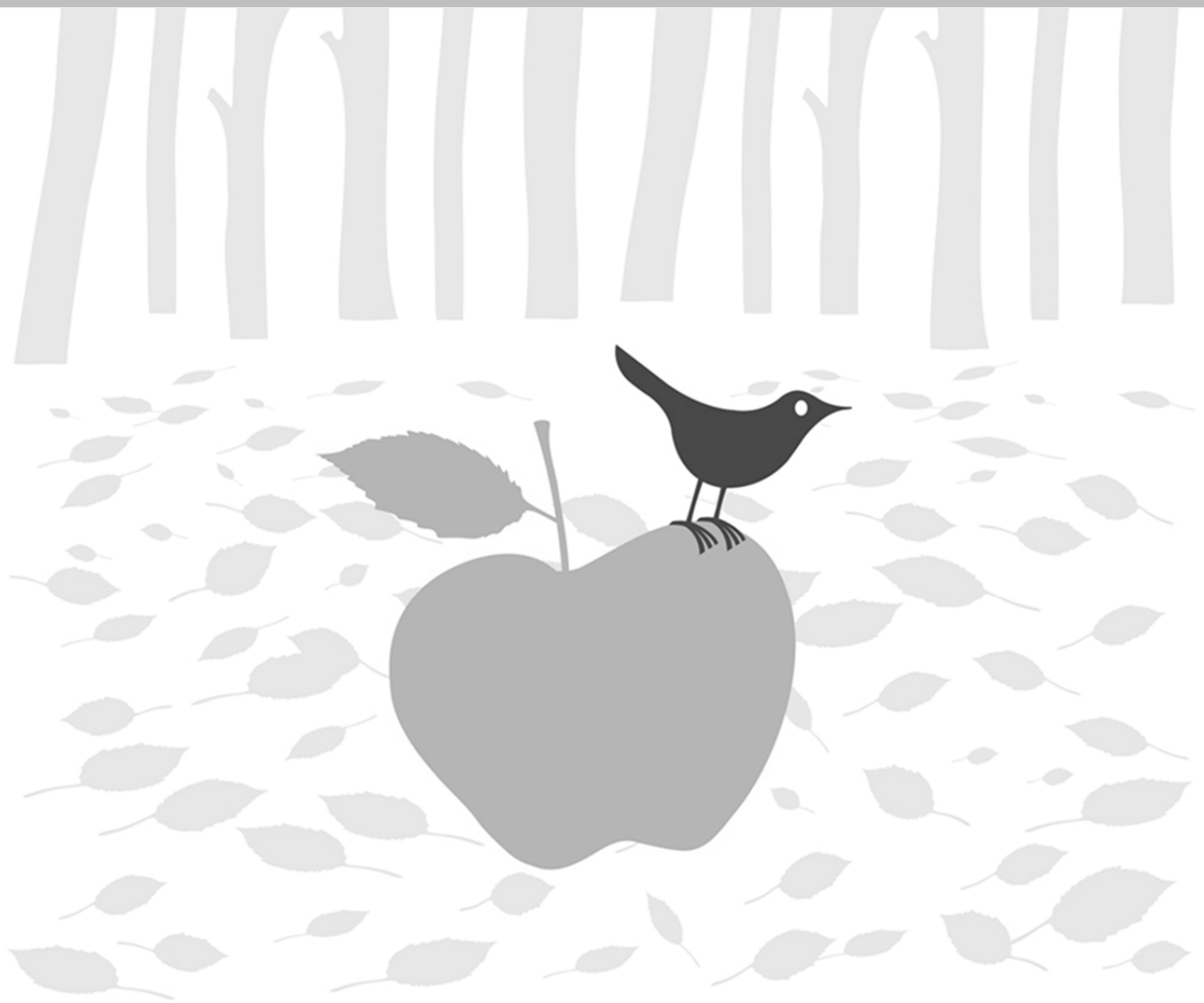


# Student Responsibilities, Rights, and Discipline HANDBOOK



Portland Public Schools



2014 | 2015



## TABLE OF CONTENTS

Roles and Responsibilities.....	2
<b>R i g h t s</b> .....	4
Attendance.....	4
Before and After School.....	4
Buses .....	5
Clubs, Student Participation.....	6
Community Respect, Responsibility .....	6
Complaint Procedures – Student and Parent/Guardian .....	6
Dress and Grooming.....	6
Drugs and Alcohol.....	7
Fees and Fines .....	7
Food Safety.....	7
Freedom of Expression and Assembly .....	7
Harassment, Bullying, Hazing, Sexual Harassment .....	7
Internet Use .....	8
Lost, Stolen, Damaged Property.....	8
Medicines, Medical Emergencies .....	8
Plagiarism, Cheating.....	9
Prohibited Items .....	9
Searches – Locker Checks and Student Searches .....	9
Student Information.....	9
Testing, Evaluation .....	10
Threats.....	10
Tobacco .....	11
<b>D i s c i p l i n e</b> .....	12
Discipline.....	13
Levels.....	13
Suspension Procedures.....	18
Expulsion Procedures .....	19
Discipline of Students with Disabilities.....	19

Portland Public Schools recognizes the diversity and worth of all individuals and groups and their roles in society. All students have a right to feel safe and included at school so that they can thrive academically and socially. No discrimination or harassment of individuals or groups on the grounds of age, color, creed, disability, marital status, national origin, race, religion, sex, or sexual orientation will occur in any educational program, activity, or employment.

This handbook is also available at your school in the following languages: Spanish, Russian, Vietnamese, Chinese, and Somali. For more help with interpretation or translation of languages, please call 503.916.3427.

The full texts of policies and administrative directives are in the Portland Public Schools Policies and Regulations book and online.

## **Roles and Responsibilities**

Portland Public Schools' students are expected to be safe, respectful, and responsible.

Students are expected to act in a way that allows teachers to teach and students to learn.

### **STUDENTS**

#### **As a student, you have a right to:**

- Talk with your teachers, counselor, and other school staff about any concerns.
- Receive fair discipline without discrimination.
- Report any incidents of bullying, harassment, abuse, and verbal or physical threats.
- Access your own records, within appropriate guidelines.
- Receive discipline information in a language you can understand.

#### **As a student you have a responsibility to:**

- Attend school regularly, arrive on time, bring appropriate materials, and be prepared to participate in class and do homework.
- Do your best.
- Respect the rights, feelings, and property of other students, parents/guardians, school personnel, visitors, guests, and school neighbors.
- Behave properly on school grounds, school buses, at bus stops, at any school-related activity, and in the classroom so as not to interfere with teaching and learning.
- Follow classroom, school, and District rules.
- Report violations of rules.

## PARENTS/GUARDIANS

### **Your parent/guardian has a right to:**

- Receive regular official reports of your academic progress and attendance.
- Make recommendations and give input about educational planning.
- Participate in conferences with teachers and/or the principal.
- Receive explanations from teachers about your grades.
- Access all your school records, within appropriate guidelines.
- Obtain further clarification on student rights, responsibilities, and discipline.
- Receive discipline information in a language she/he can understand.

### **Your parent/guardian has a responsibility to:**

- Assist school staff by sharing ideas for improving student learning and preventing or resolving student discipline problems.
- Provide supervision for your health, physical and emotional well-being.
- Ensure your attendance is prompt and regular while also providing the school with explanations for your absences or tardiness.
- Attend parent/guardian conferences.
- Help enforce student compliance with school rules.
- Provide appropriate supervision for you before and after school.
- Review and discuss student rights, responsibilities, and discipline with you.
- Support the school self-discipline and conflict resolution programs.

# ***Rights***

## AND RESPONSIBILITIES

### **Attendance**

Students are expected to attend school and classes regularly and on time. Parents/guardians are legally responsible to have their children in school.

The parent/guardian may notify school staff of absences and/or tardiness by sending a note, email, fax, or leaving a voicemail or message. The following absences are excused when the parent/guardian informs school staff of:

- student illness,
- family illness requiring student's presence,
- religious holidays,
- death in a family,
- prearranged doctor or dentist appointments.

Notification must occur within three (3) days of the absence and should include:

- the date,
- the name of the student,
- the reason for the absence, and
- the signature of the parent/guardian.

When it is necessary for parents/guardians to pick up their child before the regular dismissal time, they should come to the school office. The office cannot release a student to anyone who is not listed on the child's emergency information form. If parents/guardians are sending someone else to pick up a student, prior written arrangements must be made with the school office.

Students should make up all work missed and will receive credit for make-up work for excused absences.

State law requires schools to withdraw students who are absent ten (10) consecutive school days for any reason.

### **Before and After School**

Students can be disciplined for misbehaving on the way to and from school within a reasonable period of time. School personnel, however, cannot be assigned to supervise students who walk to and from school. School personnel are not responsible for the students' conduct or safety while en-route to and from school prior to or after published school hours.

## Buses

School bus transportation is a privilege, which students keep by being safe, respectful, and responsible.

If a student rides a school bus to and from school, he or she must follow the posted bus rules. Misbehavior on the bus and at bus stops will be dealt with by a school administrator. A student may lose the bus-riding privilege by repeated misbehavior or a serious violation of a bus rule.

The State of Oregon has rules for students riding school buses. These rules are posted in all school buses.

### BE SAFE

- No fighting, wrestling, or rough behavior.
- No firearms, weapons, or hazardous materials.
- Only recognized guide or assist animals allowed on the bus.
- Stay seated while bus is in motion.
- Cross in front or at driver designated location when exiting.
- Keep hands, arms, and head inside the bus at all times.

### BE RESPECTFUL

- Students are under the authority of the driver.
- The driver may assign seats as needed.
- Use only soft voices (no loud or vulgar language).
- Ask driver permission before opening or closing windows.
- Keep the bus clean and undamaged.
- No eating or drinking.
- Be courteous to the driver, peers, and passersby.

### BE RESPONSIBLE

- Use the emergency door only in an emergency.
- Be at your stop at least five (5) minutes prior to bus arrival.
- Bus rules also apply to bus stops.
- Students need written permission for an alternate stop.



## **Clubs, Student Participation**

A club is a group of students that meets at a regular time, shares a common interest, or wants to provide a service. The club must be supervised by an adult who is approved by the principal and be open to any student.

Transportation for students participating in a club that meets before or after school is the responsibility of the parent/guardian.

Students are encouraged to participate in school activities and services that promote a positive atmosphere within the school. They are also invited to discuss school issues with teachers and the principal and take part in making decisions and solving problems.

Many schools have after-school sports programs. Sports club activity is not endorsed or sponsored by Portland Public Schools. Participation in any activity of a sports club that occurs outside the school day or off school premises is the sole responsibility of the student, family, and club sponsor and is not the responsibility of Portland Public Schools.

## **Community Respect, Responsibility**

When walking to or from school or waiting for a bus, students must respect the rights and property of other people. They should not throw paper or garbage on the ground. Students must not cause damage to any property.

## **Complaint Procedures – Student and Parent or Guardian**

If a problem happens outside the classroom, students and parents/guardians may talk to the teacher, the counselor, or the principal. If a problem relates to the classroom, the student or parent/guardian is encouraged to talk to the teacher first. If these steps do not solve the problem, they may ask for a conference with the principal. If this conference does not solve the problem, the principal will recommend additional steps the parent/guardian may take to resolve the situation.

## **Dress and Grooming**

Students and their parents/guardians are responsible for the student's cleanliness, clothing, and neat appearance. Students should wear clothing that is clean and appropriate for the weather and follows the rules of the school. Clothing must not:

- interfere with the learning process;
- be too revealing (examples include bare midriffs, visible undergarments, plunging necklines, see-through material, saggy pants);

- be related to alcohol, tobacco, or other drugs;
- be vulgar or insulting, or promote behavior that would violate school rules;
- threaten health or safety of others;
- be demeaning to a particular person or group; or
- indicate gang membership or activity.

Such clothing is prohibited at school or at school-sponsored events.

Students may be directed to change dress or grooming if it interferes with the learning process or school climate.

Individual schools may also have specific dress codes. Schools must establish an exception to the dress code for sincerely held religious beliefs.

## **Drugs and Alcohol**

Students must not use, possess, or sell/transfer alcohol or drugs, or anything that looks like a drug in the schools, on the school grounds, at school activities, or during school hours. Students whose behavior indicates they are under the influence of drugs or alcohol will be disciplined.

## **Fees and Fines**

There are no fees for the basic required educational program. There may, however, be fees for optional field trips and athletics. Families with serious financial limitations should contact the school to make confidential arrangements.

Fines will be charged for damaged or lost books or school equipment. School records and grades may be withheld until payment is received.

## **Food Safety**

The State of Oregon has strict rules regarding the use and preparation of food in public places such as schools. Classroom treats may only be commercially-prepared. Foods must be wrapped in individual portions and cannot be shared between students. Students may not share food from their lunches that they bring from home.

## **Freedom of Expression and Assembly**

Within state and Federal law, District policy, and school guidelines, students have freedom of expression and assembly under the First Amendment.

## **Harassment, Bullying, Hazing, Sexual Harassment**

All students have the right to feel safe and included at school so they can thrive academically and socially regardless of race, gender, religion, disability, national origin, marital status, sexual orientation, gender identity, or

other perceived differences. Harassing, bullying, hazing, threatening, or physically harming a student or staff member or a person's property is prohibited. Sexual harassment is any unwelcome sexual behavior, including words or actions, and is prohibited. Students should report any harassment to school staff.

## **Internet Use**

Students using the Internet must follow the rules in the PPSNet Acceptable Use Regulation. The PPSNet Acceptable Use Regulation is sent home in the registration packet and is available at each school.

The rules are about:

- personal safety,
- illegal and destructive activities,
- security,
- inappropriate conduct,
- respect for privacy,
- plagiarism,
- copyrights, and
- inappropriate material and websites.

A student who breaks the rules may lose the privilege of using the Internet and receive disciplinary actions.

## **Lost, Stolen, Damaged Property**

The District does not pay for or replace student property that is lost, stolen, or damaged at school. All items, including electronics, bicycles, and skateboards, are brought to school at the owner's risk. Lockers are not safe places to store valuable items.

## **Medicines, Medical Emergencies**

### **Medicines**

If a student must take a medication while at school, the parent/guardian must first take it to the principal. The principal will explain the rules and in most cases arrange for an appropriate staff member to give the student the medicine. Any medication must be in the original labeled container. Students are allowed to take their own medication under certain limited conditions but must check with the principal first.

### **Medical Emergencies**

Medical assistance, as necessary, will be ordered by the school at parent/guardian expense.

## **Plagiarism, Cheating**

Students may not copy written work or projects done by other people or cheat on tests and other schoolwork.

## **Prohibited Items**

Students may not have dangerous or prohibited items at school, on school property, or at school activities including:

- dangerous or deadly weapons, knives, or anything else that could injure a person or property;
- anything that looks like a weapon, including toys;
- explosives, including fireworks, ammunition, bullets;
- harmful gases;
- poisons;
- alcohol, tobacco, including e-cigarettes or other nicotine delivery devices, and other illegal drugs;
- anything used to transport, sell, or use illegal drugs including paraphernalia, matches, and lighters;
- stolen property;
- clothing showing gang membership or activity;
- anything that is racially, religiously, or sexually offensive; anything else prohibited by school rules.

Prohibited items will be removed and held by school staff and shall only be released to the student's parent. Illegal items will be destroyed or held for Portland Police. Stolen items will be returned to the owner or to the police.

## **Searches – Locker Checks and Student Searches**

The school may search a student if the school has a reasonable suspicion that a prohibited or dangerous item will be found. Backpacks, purses, lockers, and assigned storage areas may also be searched. Lockers, desks, and other places where students keep things are the property of, and are under the control of, the school and may be checked at any time for dangerous or prohibited items. Only items needed by a student for schoolwork and school activities can be stored in these places.

## **Student Information**

The school keeps records on each student. These are records of student academic progress, student behavior, and other pertinent information relating to the student. These records are confidential.

Student records provide information for people such as school personnel and parents/guardians.

Parents/guardians have rights regarding student records, including the right to view these records, and request an amendment of the records. They may always take

questions to the principal.

### **Military Recruiters**

The No Child Left Behind Act of 2001 requires school districts to provide the names, address, and phone numbers of juniors and seniors to military recruiters and colleges or universities upon request.

For more information regarding student information and your ability to “opt out” of releasing certain student records, talk to office staff at your school.

## **Testing, Evaluation**

### **Testing**

All students in grades 3 through 8, plus tenth graders, are tested each spring in reading and math. The tests come from the Oregon Department of Education and are used in every school in the state. Writing, math problem solving, and science are also tested, but only in some of the grades. A variety of testing options is available so that all students, including those with disabilities, can be tested at their appropriate level. Parents/guardians with questions about the testing program should contact the principal for more information.

### **Evaluation**

The District has a “child find” obligation to identify, locate, and evaluate all resident children who are in need of special education and related services, or accommodations in general education classes. Parents may request that the District evaluate their child to determine eligibility for special education services, Section 504 Plan, Talented and Gifted, and/or English Language Learner/English as a Second Language programs. The District will either agree to conduct the evaluation or refuse to conduct the evaluation and provide the parent with notice of its refusal.

## **Threats**

When a student threatens violence or harm, the administrator may consider and implement any of the following options:

- a. Immediately removing from the classroom setting any student who has threatened to injure another person or to severely damage school property.

- b. Placing the student in a setting where the behaviors will receive immediate attention, including, but not limited to, the office of the school principal, vice principal, assistant principal, counselor or a school psychologist licensed by the Teacher Standards and Practices Commission or the office of any licensed mental health professional.
- c. Requiring that a school obtain an evaluation of a student by a licensed mental health professional before allowing the student to return to the classroom setting. A student who is removed from the classroom setting for an evaluation may not be removed for more than 10 school days unless the administrator is able to show good cause that an evaluation could not be completed in that time period. The administrator should contact Student Services for assistance in this process. Student Services will maintain contracts with licensed mental health professionals to perform mental health evaluations.

The administrator must promptly, but no later than 24 hours of the incident, notify the parent or legal guardian about student's behavior and the school's response.

The district will allocate the funds necessary to carry out the provisions of this administrative directive.

## **Tobacco**

Students and adults are not permitted to use, possess, sell, or transfer tobacco or tobacco/nicotine related products or paraphernalia in school buildings, on school property, in vehicles used for school transportation and school-related work, and at all school-related activities.

## **Weapons**

Weapons are prohibited in or near our schools. Students cannot have or use firearms or knives or anything that looks or is used like a weapon at school. Words and actions that threaten or could frighten other people are not allowed – even in play or with friends.

Federal and state laws say that students who bring firearms to school must be expelled for one calendar year.

# *Discipline*

## AND PROCEDURES

School personnel and parents/guardians share the responsibility for encouraging students' appropriate behavior. School personnel are expected to use a continuum of positive behavioral interventions, strategies, and supports to teach, encourage and reinforce appropriate behaviors conducive to a learning environment.

School personnel are expected to intervene early and start the discipline process at the lowest possible level reasonably calculated to change the student's behavior and minimize loss of instructional time. Additionally, District staff shall consider all available alternatives, focusing first on family and school-based resources when teaching school expectations and responding to misbehavior.

Certain kinds of behavior are not allowed at school or at school activities.

District behavior expectations apply to students whenever they are:

- present in any school or on property of the school district;
- at any school-sponsored activity, regardless of its location, including traveling to and from within a reasonable period of time;
- traveling to and from school as defined in this document in the "Before and After School" section;
- involved in conduct (regardless of whether or not they are off campus or at a non-school sponsored program) that has a direct connection to a school's safety and/or welfare; or
- participants in District athletic programs, when rules are in force during the entire season in which the student is participating—seven (7) days a week, 24 hours a day, at any location.

Examples of misbehaviors:

- keeping other students from learning,
- using profane or abusive language,
- using or having tobacco, alcohol, other drugs, or tobacco/drug paraphernalia,
- fighting of any kind,
- bringing weapons or anything that looks like a weapon to school,

- stealing or damaging property,
- threatening, harassing, or bullying students or staff,
- wearing clothing showing gang membership or activity, or
- refusing to follow directions.

### **Summary of Disciplinary Consequences and Interventions**

There is a range of consequences for student misbehavior.

## **Discipline Levels**

#### Action Levels

- Level 1 Conferences
- Level 2 Interventions - exclusion from extra curricular activities, time-outs, detention, etc.
- Level 3 Suspension/Temporary Exclusion/ Reassignment/Referral
- Level 4 Expulsion/Delayed Expulsion/ Reassignment/Referral
- Level 5 Mandatory Expulsion
- Level 6 Mandatory One-Year Expulsion

The use of expulsion is limited to:

- Conduct that poses a threat to the health and safety of students to school employees; or
- When other strategies to change student conduct have been ineffective;
- or as required by law.

Prior to suspension or expulsion, school staff must consider:

- The nature of the misconduct.
- A student's age, health, and disability or special education status.
- Cultural or linguistic factors that may have played a role in the misconduct.
- Appropriateness of student's academic placement.
- Student's prior conduct and record of behavior.
- Support systems available to the student.
- Student's willingness to repair the harm.
- Impact of the incident on overall school community.
- Availability of prevention and intervention programs that are designed to address student misconduct.
- Whether the student voluntarily disclosed the misconduct.



### Summary of Behavior Expectations and Consequences

Examples of conduct which violates expectation	Definition	Occurrence	Disciplinary action min— max
<b>ATTENDANCE &amp; PUNCTUALITY</b>			
<b>Class Cutting/ Leaving Without Permission</b>	Failure to attend assigned class without permission or excuse; leaving the building, classroom or assigned area without prior approval of the teacher and/or administrator.	Minor/First Serious/Rep	1 — 2 2 - 3
<b>Loitering</b>	Remaining around the school building without permission and staff supervision for purposes other than an educational assignment.	Minor/First Serious/Rep	1 — 2 2 — 3
<b>Off Limits</b>	Entering a location in a building or any school property which has been restricted from student use or entering a location which has been restricted from student use during certain times of the day.	Minor/First Serious/Rep	1 — 2 2 — 4
<b>Tardiness</b>	Failure to be in a place of instruction at the assigned time.	Minor/First Serious/Rep	1 — 1 2 — 3
<b>Trespassing</b>	Entering any school property or into school facilities without proper authority; during school hours; includes any school entry during a period of suspension or expulsion.	Minor/First Serious/Rep	1 — 3 3 — 4
<b>Truancy</b>	Failure to report to school without permission or excuse.	Minor/First Serious/Rep	1 — 2 2 --- 3
<b>Other Similar Offenses</b>	Any other prohibited actions involving attendance and punctuality or the location of students on school property.	Minor/First Serious/Rep	Same as related offenses
<b>PROTECTION OF PROPERTY</b>			
<b>Arson</b>	Action which may cause a fire, but none results, such as throwing a lighted match in a trash container which fails to ignite or intentionally starting any fire or combustion on school property regardless of whether any damage occurs.	Minor/First Serious/Rep	3 — 4 5
<b>Bomb Threat</b>	Reporting to school, police or fire officials the presence of a bomb on or near school property without a reasonable belief that a bomb is present on school property.	Minor/First Serious/Rep	3 — 4 4
<b>Burglary</b>	Unauthorized entry into a School District building for the purpose of committing a crime when the building is closed to students and the public.	Minor/First Serious/Rep	3 — 4 5
<b>Deliberate Misuse of Property</b>	The intentional use without proper permission of property belonging to the school or an individual for a purpose other than that for which it was intended or in a manner likely to damage the property.	Minor/First Serious/Rep	1 — 2 2 — 3
<b>False Fire Alarm</b>	Reporting a fire to school or fire officials or setting off a fire alarm without a reasonable belief that a fire exists.	Minor/First Serious/Rep	3 — 4 4
<b>Gambling</b>	Playing any game of skill or chance for money or anything of value.	Minor/First Serious/Rep	1 — 2 2 — 4
<b>Possession Of Stolen Property</b>	Having in one's possession or under one's control property which has been stolen when the person possessing it has reasonable cause to believe the property has been stolen, or possession without permission of property belonging to another.	Minor/First Serious/Rep	1 — 3 3 — 4
<b>Theft, Minor</b>	Theft: taking property belonging to the school or any individual or group without prior permission. Minor Theft: includes items with a retail value of less than (\$20), but excluding personal items such as wallets, purses or keys.	Minor/First Serious/Rep	1 — 3 3 — 4
<b>Theft, Major</b>	Includes items with a retail value of more than (\$20) or any keys, purses or wallets regardless of the value of its contents.	Minor/First Serious/Rep	2 — 4 3 — 4
<b>Property Damage, Minor</b>	Vandalism: intentionally causing damage to or defacing school or property of others. Minor Vandalism: includes situations in which minor damage can be repaired or replaced at no cost to the School District.	Minor/First Serious/Rep	1 — 2 2 — 3
<b>Property Damage, Major</b>	Includes situations that will cost the School District to repair or replace the damage, or damage that involves a substantial disruption of school activities, such as destruction of school records.	Minor/First Serious/Rep	2 — 4 3 — 4
<b>Other Similar Offenses</b>	Other similar actions which threaten or result in the loss or destruction of property.	Minor/First Serious/Rep	Same as related offense

<b>PROTECTION OF PHYSICAL SAFETY AND MENTAL WELL-BEING</b>			
<b>Threat of Violence formerly Assault/ Menacing</b>	Intentional attempts, by word or conduct to place a school employee or another student in fear of immediate physical injury (Also see Threat of Violence)	Minor/First Serious/Rep	3 — 5 5
		If Staff	5-day min. suspension
<b>Physical contact that is harmful formerly Battery</b>	Intentionally, knowingly, or recklessly causing physical harm to another, but not mutual combat; unlawful application of force; physical contact that is willful and harmful.	Minor/First Serious/Rep	3 — 5 4 — 5
		If Staff	5
<b>Display of Patently Offensive Material</b>	Displaying sexually, racially, or religiously patently offensive materials.	Minor/First Serious/Rep	1 — 3 3 — 5
<b>Extortion</b>	Forcing other persons to act against their will, such as the demand for money.	Minor/First Serious/Rep	2 — 4 3 — 4
<b>Fighting</b>	Fighting involves the exchange of mutual physical contact, such as pushing, shoving and hitting, with or without injury (i.e., mutual combat).	Minor/First Serious/Rep	1 — 4 2 — 4
<b>Firecrackers or Explosives</b>	Using or possessing any firecrackers, fireworks, bullets, ammunition, or explosive materials or device.	Serious/Rep If Weapon	3 — 5 6
<b>Harassment or Bullying, other</b>	Disturbing consistently, by pestering or tormenting; abusive words. Harassment, nonsexual, (physical, verbal, or psychological). Harassing conduct may take many forms, including verbal acts and name-calling, as well as non-verbal behavior, such as graphic and written statements, or conduct that is physically threatening, harmful, or humiliating.	Minor/First Serious/Rep	1 — 2 3 — 4
<b>Harassment or Bullying on the Basis of Disability</b>	Intimidation or abusive behavior toward a student based on disability. Harassing conduct may take many forms, including verbal acts and name-calling, as well as non-verbal behavior, such as graphic and written statements, or conduct that is physically threatening, harmful, or humiliating.	Minor/First Serious/Rep	1 — 2 3 — 4
<b>Harassment or Bullying on the Basis of Race, Color, or National Origin</b>	Intimidation or abusive behavior toward a student based on race, color, or national origin. Harassing conduct may take many forms, including verbal acts and name-calling, as well as non-verbal behavior, such as graphic and written statements, or conduct that is physically threatening, harmful, or humiliating.	Minor/First Serious/Rep	1 — 2 3 — 4
<b>Harassment or Bullying on the Basis of Sex</b>	Unwelcome conduct of a sexual nature, such as unwelcome sexual advances, requests for sexual favors, and other verbal, nonverbal, or physical conduct of a sexual nature. Harassment or bullying on the basis of sex also includes gender-based, nonsexual harassing conduct, such as harassment based on gender stereotyping. Both male and female students can be victims of sexual harassment, and the harasser and the victim can be of the same sex.	Minor/First Serious/Rep	1 — 2 3 — 4
<b>Hazing</b>	Any activity that recklessly or intentionally endangers the mental health, physical health, or safety of a student for the purpose of initiation or membership in or affiliation with any student group, organization, or class.	Minor/First Serious/Rep	1 — 2 3 — 4
<b>Intimidation</b>	Forcing or discouraging an action by creating fear; extortion. (Also see Extortion)	Minor/First Serious/Rep	1 — 2 3 — 4
<b>Reckless Vehicle Use</b>	Using any motorized or self-propelled vehicle on or near school grounds in a reckless manner or so as to threaten health or safety or to disrupt the educational process.	Minor/First Serious/Rep	2 — 3 3 — 4
<b>Robbery</b>	Taking property from a person by force or threat of force.	Minor/First Serious/Rep	3 — 4 4
<b>NOTE: Discipline for any weapon violation regardless of type, must be done in consultation with the District School Climate &amp; Discipline Department.</b>			
<b>Weapon, Dangerous</b>	Any weapon, device, instrument, material or substance which <u>under the circumstances in which it is used, attempted to be used, or threatened to be used, is readily capable of causing death or serious physical injury.</u>	Any Occurrence	6
<b>Weapon, Deadly</b>	Possession of any instrument, article or substance specifically designed for and capable of causing death or serious physical injury.	Any Occurrence	6

<b>Weapon, Firearm</b>	Possession of a gun; including but not limited to a firearm which is “designed to or may readily be converted to expel a projectile by the action of an explosive and any explosive, incendiary, or poison gas.” (Section 921 of Title 18 of the U.S. Code.) “Possession” is defined to include, but not limited to having a weapon located: (1) in a space assigned to a student such as a locker or desk, (2) on the student’s person or property (on the student’s body, in student’s clothing, in an automobile), (3) under the student’s control, or accessible or available; for example: hidden on school property. Confiscated guns are turned over to the police.	Any Occurrence	6
<b>Weapon, Simulated</b>	Possession of articles that resemble, but are not, knives, guns, or other weapons.	Any Occurrence	3 — 5
<b>Other Similar Offenses</b>	Engaging in other similar acts which endanger the physical safety or mental or emotional well-being of others.	Minor/First Serious/Rep	Same as related offense
<b>APPROPRIATE LEARNING ENVIRONMENT</b>			
<b>Disruptive Conduct</b>	Behaving in a manner which disrupts or interferes with the educational process, including consensual sexual activity.	Minor/First Serious/Rep	1 — 2 2 — 4
<b>Dress Code Violation</b>	Dressing or grooming in a manner that disrupts or is likely to disrupt the educational climate or process, or a threat to the learning opportunity, health or safety of the student or any other person. Includes violation of school adopted dress code.	Minor/First Serious/Rep	1 — 2 2 — 3
<b>Forgery</b>	Providing a false signature or altering school documents.	Minor/First Serious/Rep	1 — 2 2 — 3
<b>Gang Member Identifier</b>	Displaying material that identifies student as a member or associate of a gang, including identified behaviors. (consult with SRO for current trends)	Minor/First Serious/Rep	1 — 3 3 — 4
<b>Indecent Exposure</b>	Exposure of private parts of the body in a lewd or indecent manner in a public place. Exposure of sexually explicit content to another person.	Minor/First Serious/Rep	1 — 2 3 — 4
<b>Indecent Gesture</b>	Making gestures which convey a grossly offensive, obscene or sexually suggestive message.	Minor/First Serious/Rep	1 — 2 3 — 4
<b>Insubordination</b>	Failure to comply with a proper and authorized direction or instruction of a staff member.	Minor/First Serious/Rep	1 — 2 3 — 4
<b>Interference with School Personnel</b>	Preventing or attempting to prevent school personnel from engaging in their responsibilities through threats, violence or harassment.	Minor/First Serious/Rep	2 — 4 3 — 4
<b>Language, Abusive/ Profane</b>	Writing or saying anything which ridicules or humiliates another person on account of age, color, creed, disability, marital status, national origin, race, religion, sex or sexual orientation.	Minor/First Serious/Rep	1 — 2 3 — 4
<b>Non-Compliance with Disciplinary Action</b>	Failure to make satisfactory progress toward completing an assigned consequence or intervention(s).	Minor/First Serious/Rep	1 — 2 3 — 4
<b>Open Defiance</b>	Orally refusing to comply with a direction or instruction of a staff member.	Minor/First Serious/Rep	1 — 2 3 — 4
<b>Physical Contact, Inappropriate</b>	Pushing, Shoving, Play fighting or other inappropriate touching that does not result in harm.	Minor/First Serious/Rep	1 — 2 3 — 4
<b>Plagiarism/ Cheating</b>	Representing another person’s work as one’s own.	Minor/First Serious/Rep	1 — 2 3 — 4
<b>Possession of Prohibited Items</b>	Possession of items that are not permitted at school. Includes toy weapons that do not resemble a real weapon. (As with actual weapons, <b>discipline for toy weapons must be done in consultation with the District School Climate &amp; Discipline Department</b> )	Minor/First Serious/Rep	1 — 2 3 — 4
<b>Technology, Use Violation</b>	Using technology equipment other than in the manner directed by school staff; violations of internet security.	Minor/First Serious/Rep	1 — 2 3 — 4
<b>Tobacco, Use and/or Possession</b>	Using or possessing by any age student any form of tobacco or nicotine delivery device on or adjacent to school property and at all activities without regard to location.	Minor/First Serious/Rep	1 — 3 3
<b>Willful Disobedience</b>	Repeated refusal or failure to comply with a direction or instruction of a staff member.	Minor/First Serious/Rep	2 — 3 3 — 4
<b>Other Similar Offense</b>	Engaging in other similar conduct that disrupts the educational process or interferes with teaching and learning.	Minor/First Serious/Rep	Same as related offenses

## ALCOHOL/DRUG DISCIPLINARY MEASURES

**NOTE: Discipline for any alcohol or other drug violation must be done as outlined in 4.30.022-AD(<http://www.pps.k12.or.us/departments/board/878.htm>)**

PREVIOUS VIOLATION	CURRENT VIOLATION		DISCIPLINARY ACTION
If first violation was for...	Within the past 3 years, is this the 1st, 2nd, or 3rd finding? *	Was this violation for possession/use or transfer/sale?	Then the Disciplinary Action Level will be:
N/A	First	Possession/Use	Level A
N/A		Transfer/Sale	Level B
Possession/ Use	Second	Possession/Use	Level B
Transfer/Sale		Possession/Use	Level C
Possession/ Use		Transfer/Sale	Level B
Transfer/Sale		Transfer/Sale	Level C
Any Violations	Third	Possession/Use	Level C
Any Violations		Transfer/Sale	Level C

\* In order for an incident to qualify as a "finding" there must be a hearing conducted by an administrator and a letter to parents/guardians stating the decision.

DISCIPLINARY ACTION LEVEL	DESCRIPTION
Level A*	Insight Class and student barred from school sponsored competition, games, and performances for 28 days. In addition, at the administrator's discretion, the student may be suspended for up to five (5) school days (only after hearing, if result is a Level A finding) and/or be required to perform up to eight (8) hours of community service.
Level B*	Expulsion. May be delayed if the student is accepted into a school-approved alternative program or treatment service which addresses the student's alcohol and other drug issues. Student is excluded from District schools and School District activities until an initial plan for school engagement is created during the delayed expulsion period.
Level C*	Expulsion.

\*In lieu of these Disciplinary Actions, an alternative plan may be developed (see section titled Alcohol and Drug Related Activity).

Special procedures must be followed for students with disabilities or formal Section 504 plans who are suspended for more than ten (10) consecutive days in any school year, for additional exclusions of up to ten (10) school days that do not constitute a pattern, for separate acts of misconduct which constitute a pattern, or if student is being considered for expulsion. Reference: [4.30.025-AD](#)

### Additional Notes

Some violations may result in a referral to the Portland Police Bureau.

**Any use of physical force** by PPS staff, or volunteer must be in accordance with the district's policy and practices concerning student restraint and seclusion 4.50.060 – **AD-Restraint and Seclusion**. Physical restraint or seclusion

may only be used if the student's behavior imposes a reasonable threat of imminent, serious bodily injury to the student or others, and less restrictive interventions would not be effective. Only personnel who have been trained through the district's approved methods may implement a physical restraint or seclusion except in an emergency circumstance when trained personnel are not immediately available due to the unforeseeable nature of the emergency circumstance.

Seniors are disqualified from participation in commencement exercises and related activities if within 60 consecutive calendar days of the last senior school day they are found to be in violation of District alcohol or drug policy, or any violation resulting in three or more days of suspension, or more serious disciplinary action.

## **Suspension Procedures**

Suspension means that a student cannot attend school or school activities in Portland Public Schools. Suspensions can last for up to ten school days.

An informal meeting will be held between an appropriate school person (team leader, administrative assistant, principal) and the student before the student is suspended unless an emergency suspension is necessary.

When needed, interpretation services must be provided for students and/or parents/guardians.

Parents/guardians are notified when students are suspended. A parent/guardian conference is expected before a student is readmitted to school.

During any suspension, students are expected to complete homework and may request missed assignments.

A suspended student may not be on any Portland School property nor at any school-sponsored activities.

A student or parent/guardian wanting to appeal a suspension should contact the principal to arrange a conference.

## **Expulsion Procedures**

Expulsion means a student cannot attend school or school activities in any Portland Public School for up to a full calendar year.

Firearm and some weapon violations require expulsions for a full calendar year.

Prior to a student being expelled, a hearing is held with parents/guardians, the student, and a hearing officer. The hearing officer decides if a student will be expelled, and if so, for how long.

When needed, interpretation services must be provided for students and/or parents/guardians.

An expelled student must not be on any Portland Public School property nor at any school-sponsored activities.

A student or parent/guardian may ask for a review of any expulsion or delayed expulsion decision.

## **Discipline of Students with Disabilities**

All students are subject to disciplinary procedures to promote positive changes in their behavior and to protect others.

For students with an IEP, a formal Section 504 plan or who have been identified for a special education referral, additional procedures may need to be followed to determine whether the student may be excluded for disciplinary reasons.

Special procedures exist for students with an IEP, a formal Section 504 plan or those who have been identified for a special education referral who are suspended for more than ten (10) days in any school year.

In cases where the disciplinary action includes a suspension or expulsion, the school administrator must notify parents/guardians/surrogates in the same manner as non-disabled students. The Special Education Department will notify the parents/guardians/surrogates of any special education meetings.



Student Services

PO Box 3107 Portland, OR 97208-3107

503.916.2000

Portland Public Schools is an equal opportunity  
educator and employer.

Revised 11/2014

67-9002