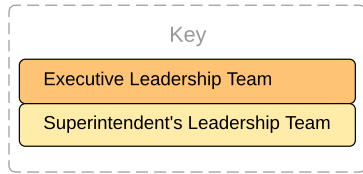




2019-20 PPS Leadership

Revised: February 27, 2020
Subject to change



Guadalupe Guerrero
Superintendent

Cheryl Pitman
Confidential Executive Assistant (CEA)

RACIAL EQUITY & SOCIAL JUSTICE
Dani Ledezma
Senior Advisor to Superintendent

RESEARCH, ASSESSMENT & ACCOUNTABILITY
Dr. Russell Brown
Chief of System Performance

Amy Liu
CEA

Claire Hertz
Deputy Superintendent
Business & Operations

Liz Large
Interim General Counsel

Stephanie Soden
Executive Chief of Staff

Dr. Kregg Cuellar
Deputy Superintendent
Instruction & School Communities

Gail Warren
CEA

Maureen Retherford
CEA

Lidia Lopez Gamboa
CEA

Judy Trapp
CEA

Risk Management
Board Office, Government Relations, Complaint Coordinator

