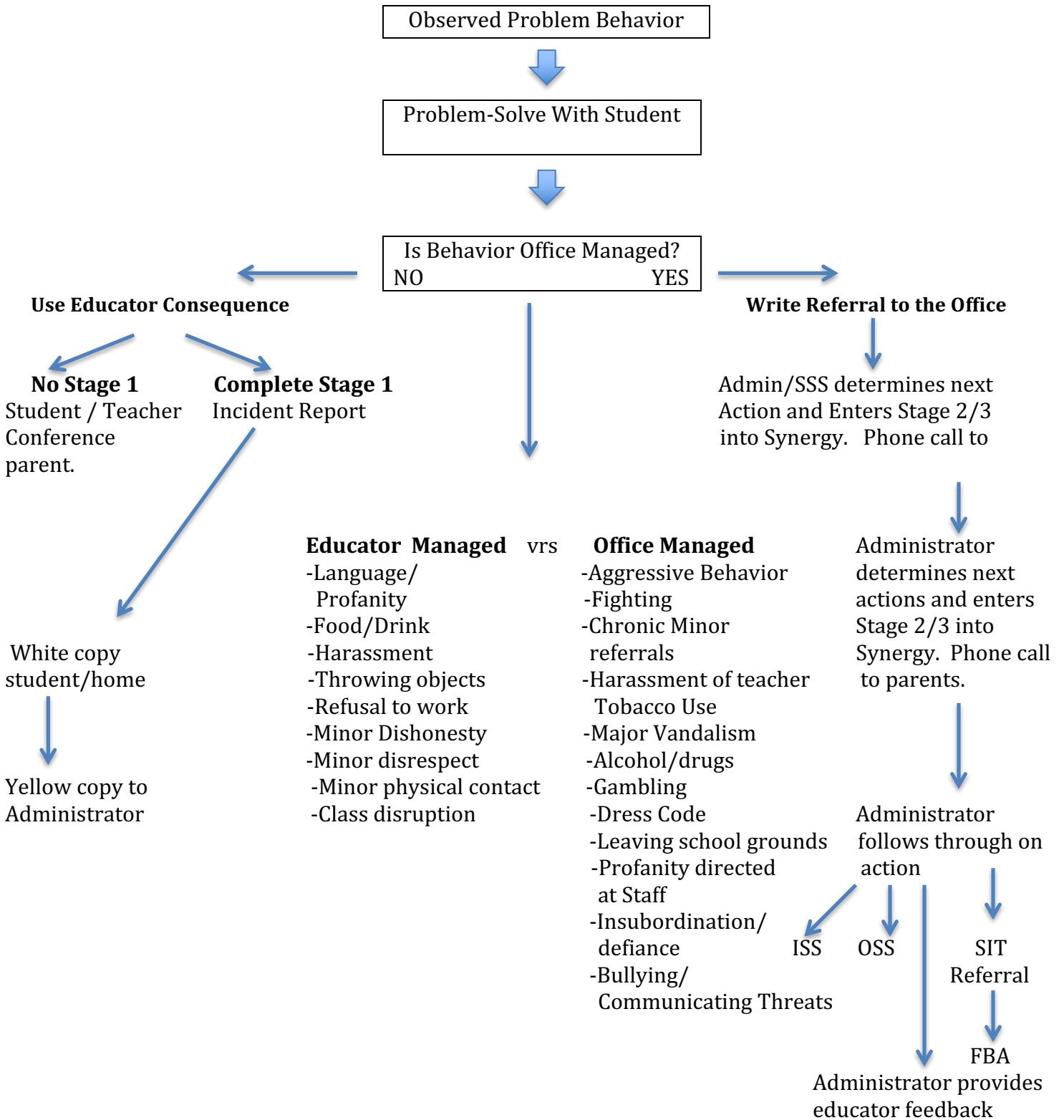


### Grout Discipline Flowchart



**\*Sidebar on Stage 1 Incident Reports**

- Issue Stage 1 when student does not respond to correction, redirection, or verbal warning.
- Notify parent with phone call or letter
- Take concrete action to correct behavior (i.e. conference with the student and/or parent,
- When possible, have the corrective action correspond the behavior being corrected. Loss of privileges, etc.)

**\*\*Educators enter Stage 1's into Synergy**