

### We offer the following degree and certificate:

- ◆ Associate of Applied Science in Family and Human Services, which requires 91 credits.
- ◆ Foundations in Human Services Career Pathway Certificate, which requires 13 credits.

### Before entry into the program, students must:

- ◆ Be prepared to enter WR 121 and MTH 20. Many HUS courses, core interdisciplinary courses, and concentration area electives require both WR 121 and MTH 20 as prerequisites. Students who do not meet these requirements may need extended time to complete the program.

### While in the program, students must:

- ◆ Receive a grade of "C" or "P" or better (as applicable) in all Core HUS Requirements, Core Interdisciplinary Requirements, and Concentration Area Electives.
- ◆ Complete Field Experience for Human Services and corresponding coursework.
- ◆ Satisfy MTH 58/MTH 65 as a degree requirement.

### Can I Transfer My Credits to a University?

- ◆ Other colleges and universities may accept a portion of this program's credits to apply to a four-year degree.
- ◆ PCC has a pathway agreement with Portland State University for graduates of the AAS in Family and Human Services degree into the BS in Child, Youth, and Family Studies program.
- ◆ To be certain about these options, check with other colleges or universities, or contact the PCC Child and Family Studies program advisor or department chair.

### GETTING STARTED

#### FAMILY AND HUMAN SERVICES PROGRAM

For additional information about the Family and Human Services program, visit [pcc.edu/programs/child-family-studies/](https://pcc.edu/programs/child-family-studies/)

Contact the academic advisor at [971-722-4707](tel:971-722-4707) or [doree.dennis@pcc.edu](mailto:doree.dennis@pcc.edu)

#### PCC GENERAL ADMISSION

To apply for admission to PCC, to [pcc.edu/admissions](https://pcc.edu/admissions) or visit an admissions office at any one of our four comprehensive campuses.

#### COLLEGE EXPENSES

For the latest information on tuition and fees, visit [pcc.edu/tuition](https://pcc.edu/tuition).

### FAMILY AND HUMAN SERVICES

Portland Community College  
Sylvania Campus  
Child Development Center, Room 210  
12000 SW 49th Avenue, Portland, OR 97219

**971-722-4707**

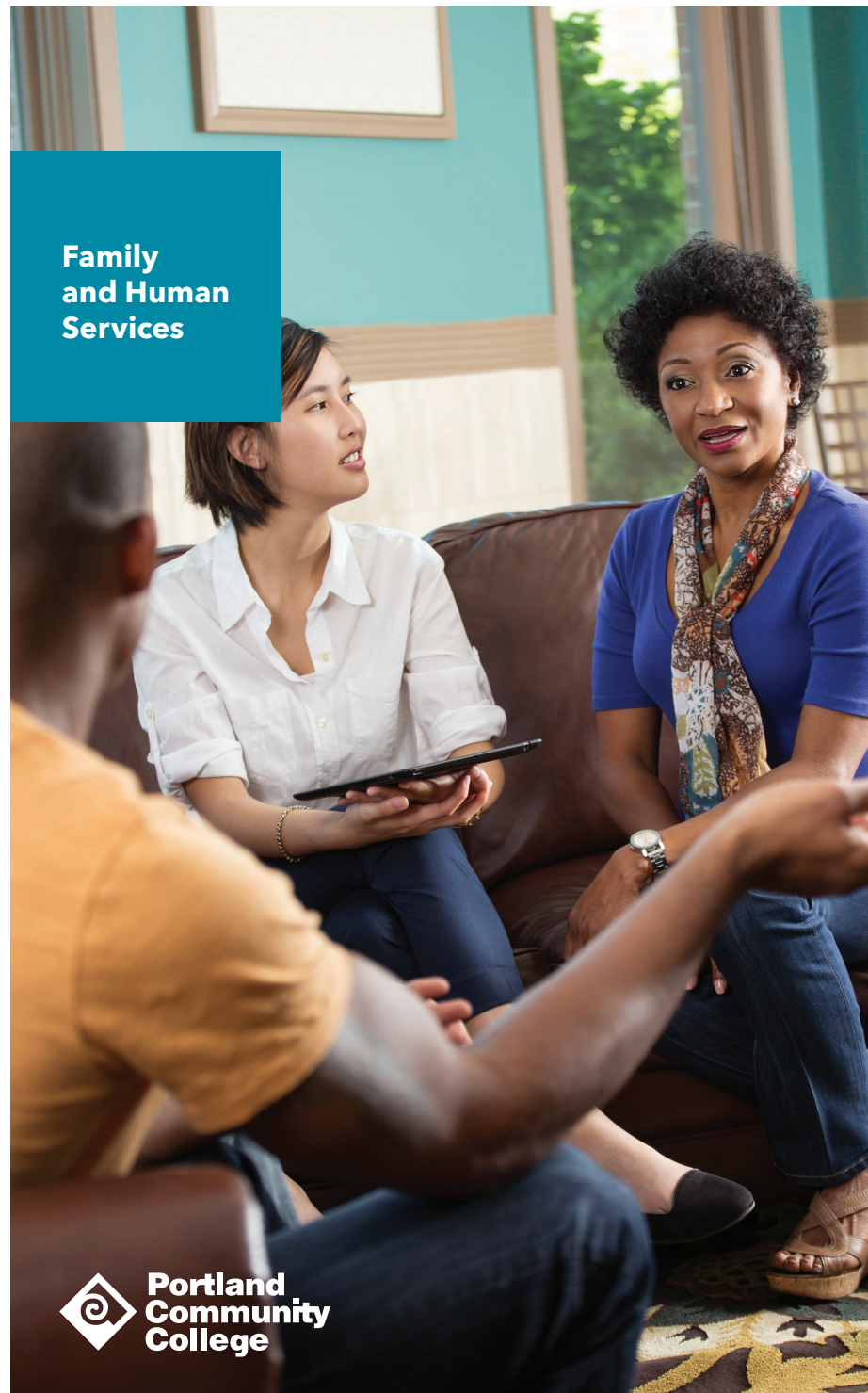
[pcc.edu/programs/family-human-services](https://pcc.edu/programs/family-human-services)

All information is subject to change.

#23833 03/18



## Family and Human Services



## HELPING THOSE IN NEED

Human services is a broadly defined field using an interdisciplinary knowledge base to meet a variety of service needs for diverse populations of clients.

In PCC's Family and Human Services program, we prepare you for entry-level human service work in a diversity of environments under the direction of professionals with more education and experience, including social workers, educators, counselors, psychologists, and other specialists. Employment opportunities may include case management, home visitor, social and human service assistant, life skills trainer, phone screener, family advocate, youth care counselor, and access specialist.

### WHO WILL HIRE ME?

Graduates of this program are hired by Head Start programs, for-profit, non-profit and private social service agencies, programs for the aging, programs serving children, youth, and families, and state and local governments. Job placement is diverse and employment opportunities exist in urban, sub-urban, semi-rural and rural communities.

Nationally, employment of social and human service assistants is projected to grow 16 percent from 2016-2026, much faster than the average for all occupations. A growing elderly population and rising demand for social services is expected to drive demand for human service workers (US Bureau of Labor Statistics, 2016). Statewide, the total number of job openings is projected to be much higher than the statewide average number of job openings, with a somewhat faster growth rate than the statewide average through 2024 (Oregon Employment Department).

### HOW MUCH CAN I EARN?

Average wages in the Portland Tri-County area range from \$12.80 to \$17.54 per hour. Those with an Associate's degree and additional training have a competitive advantage in the labor market.

## CAREER OVERVIEW

### WHAT WILL I DO ON THE JOB?

As a family and human service professional, you will assist in providing client services, including support for families, in a wide variety of fields, such as psychology, rehabilitation, and social work.

You may assist clients in identifying and obtaining available benefits as well as social and community services. You will support professionals in developing, organizing, and conducting programs to prevent and resolve problems relevant to substance abuse, human relationships, mental health, shelter services, family issues, rehabilitation or dependent care.

As a human service professional, your work is dynamic. On any given day, you may find yourself engaged in the following: determining the type of help clients need, supporting treatment plans, helping clients find assistance with daily activities, researching services that are available to clients, coordinating and/or case managing services to clients, helping clients with paperwork and applying for assistance programs, and checking in with clients to ensure that services meet their needs and are provided appropriately, effectively and responsively.

Human service professionals may work with the following populations: children and families, the elderly, people with disabilities, people with addictions, veterans, people with mental illnesses, immigrants, former prison inmates, and individuals experiencing homelessness.



### WHAT SKILLS WILL I USE ON THE JOB?

A strong desire to help others is an important consideration for a job as a family human service professional. Individuals who show patience, understanding, cultural competency and awareness, and caring in their dealings with others are highly valued by employers.

PCC's Family and Human Services program is designed to develop your communication, case management, organization, evaluation, planning, understanding of systems, cultural competency, and basic intervention skills. Verbal and written English is necessary, and bilingual human service professionals are desirable to many social service agencies.

## CERTIFICATIONS

Our Family and Human Services program is designed to accommodate the part-time and full time student. During the program, all students earn certification in Adult Mental Health First Aid™ (mentalhealthfirstaid.org). Family and human services courses may also apply toward the training and educational requirements for the Human Services Board Certified Practitioner (HS-BCP) credential administered through the Center for Credentialing and Education (cce-global.org/HSBCP).

## MEMBERSHIP

Portland Community College is a member of the Council for Standards in Human Service Education (CSHSE). CSHSE members support the work of the council in setting national standards for human service education and accrediting programs. For more information, please go to the CSHSE website at [cshse.org/membership.html](https://cshse.org/membership.html)

## ACADEMIC OVERVIEW

Our Foundations in Human Services Career Pathway Certificate (13 credits) provides you basic knowledge and skills to effectively work with clients in a variety of settings. The Certificate "stacks" into the A.A.S. degree - you won't lose credit on your way to completing the degree.

Our A.A.S. in Family and Human Services (90 credits) provides you with entry-level human service skills to work in a diversity of environments under the direction of professionals with more education and experience. The HUS program maintains flexibility and an interdisciplinary approach to the A.A.S. degree. In addition to core human services and interdisciplinary requirements, you may "concentrate" your degree program in a variety of disciplines to meet your employment needs or professional interests.