



---

# Richmond Newsletter

[www.richmondjmp.org](http://www.richmondjmp.org)

## Letter from our Interim Principal

Dear Richmond Families,

Last week, as we accepted the Goldman Sachs award for Richmond's excellent immersion program, we received many words of congratulations from educators across the country and dozens of questions. People want to know what's the secret to Richmond's longevity and successful track record, particularly in times of declining resources. Our answers to these questions has been printed on pages 5-6 of this newsletter along with the complete text about Richmond from the Asia Society's website.

The Goldman Sachs award came with a check for \$25,000 for Richmond's immersion program. How will we use this award? Who gets to make decisions about how the fund is spent?

First, no decisions have been made as to how we should spend the award from Goldman Sachs because this decision rests with Richmond's Site Council as the group charged with school improvement. I explained this to the Site Council members at our meeting on Monday, December 12 and gave them several ideas that had been generated so far. I'm sure more great ideas will emerge in the weeks/months ahead. For now, here's the list of ideas that have been suggested to date, in random order:

- Professional marketing tools to publicize and "sell" Richmond's program
- Revision of the JMP curriculum to include pre-school, revised assessment tools and protocol, etc.
- Professional development for educators - possibilities include language acquisition, effective strategies with struggling readers/writers, writers' workshop, strategies for integrated instruction, Japanese language, etc.

Site Council members discussed the importance of: 1). taking time to make thoughtful recommendations about how to spend this money according to school improvement goals; 2). avoiding using the award for a portion of staff positions (FTE) since it's a modest amount of money and one-time funding; and 3). getting regular feedback from the full staff so we make recommendations that truly reflect classroom needs.

Karen Meier is our Site Council chairperson and will lead us through this work. I hope this helps to encourage and reassure you about how recommendations and decisions for the Goldman Sachs award will come to fruition.

Wishing you a safe and happy winter vacation and a joyous start to the New Year!

Kathryn Anderson, Interim Principal

---

## Portland Public Schools

Volume 1, Issue 14

Friday, December 16, 2005

---

### Special points of interest:

- ☺ Here's the link for the education initiatives on the Asia Society's website: [www.internationaled.org/education](http://www.internationaled.org/education)
- ☺ Richmond's on the web at [www.richmondjmp.org](http://www.richmondjmp.org)

---

### Inside this issue:

Taiko Pictures	2
Bookfair Success	2
Flu Alert	2
Carpenter Needed	3
Assembly Schedule	4
Goldman Sachs Info	5
Playground News	8

---

# TAIKO PICTURES OF STUDENTS & STAFF

Assembly of 5th grade students and teachers performing Taiko with leaders from Portland Taiko on Wednesday.



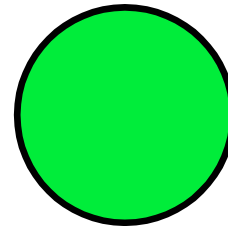
## BOOKFAIR WAS A HUGE SUCCESS!

Thank you to all of the students, parents, teachers and friends of Richmond Elementary who supported our library through their purchases and/or volunteer time at Richmond's Scholastic Bookfair during the week of November 28th. Our community purchased over \$3200 in books. As a result, Richmond earned \$987 to spend on books for our library. The Richmond PTA will be presenting Mrs. Cummings with a gift card from Powell's Bookstore.

We will be holding another Scholastic Bookfair in the

spring--just in time for summer reading!

Kristina Kallen and Shannon Sweet, Co-chairs



## FLU ALERT!

Today, our kindergarten classrooms have had 13 children home sick with a 24-hour type flu bug. The symptoms seem to be fatigue, nausea leading to vomiting and slight fever. We thought you'd want to know this so you can keep an eye on your children for any signs of symptoms. We also hope you, as parents and caregivers, manage to keep yourselves healthy during this busy time of year.



Flu season is here! Watch for flu symptoms in your child.

# FAMILY FUN WITH PORTLAND TAIKO

Learn to play Taiko! A group of Richmond's teachers and principal have really enjoyed taking a Taiko class together and we think you'll have fun, too. Portland Taiko has two class opportunities for children and adults in the new year. Here are the details:

## Youth Taiko Class for Ages 8-16

Sundays, Feb. 12-April 9, 2006 at 3:30-5:00 PM

Tuition is \$105

## Adult Community Taiko Workshop

Thursday, February 2, 2006 at 7:00-9:30 PM

Tuition is \$40

Register by January 20, 2006

## Adult Beginning Class

Mondays, Feb. 13-April 10, 2006 at 6:30-8:30 PM

Tuition is \$146

Register by January 27, 2006

Portland Taiko is located at 3230 NE Columbia Blvd. You can contact Kate for questions and registration at 503-288-2456 or via email at [kate@portlandtaiko.org](mailto:kate@portlandtaiko.org)

# ART RESIDENCIES & ASSEMBLIES SCHEDULED

Every year, Richmond families contribute generously to our Run for the Arts program to enable our staff to arrange professional art experiences within the school day for all students. Thank you for making it possible for us to offer professional art instruction throughout our school program.

Portland Taiko has offered to provide another workshop for our students after the New Year! This set of classes will be for our students in grades 3-4 and will be con-

ducted during the school day. Look for more information in upcoming newsletters when we finalize the dates.

We've attached the complete schedule of assemblies and art residencies for the remainder of the school year to give you a glimpse of upcoming events. Our teachers' art committee has worked hard to select and schedule highly acclaimed art experiences. Please know that parents and young siblings are always welcome to join us for any of the assemblies.

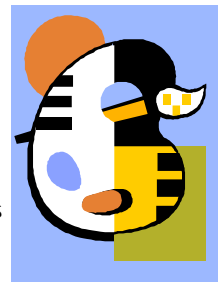
# CARPENTER NEEDED

Do you know someone who is a gifted carpenter? We need a wooden stand to hold a new set of large, laminated art prints for teachers' art lessons. While in DC last week, Kathryn Anderson purchased dozens of art prints from the National Gallery of Art. Now teachers have a growing collection of art prints by artists such as Claude Monet, Andy Warhol, and others, but we lack a convenient place to store them for easy retrieval.

Please contact our secretary Patsy Burke if you know a

carpenter who would be willing to build a wooden stand for our art prints (503-916-6220). We can provide materials per the carpenter's specifications.

Thanks in advance for your help with this project!



Richmond has a new collection of art prints from the National Gallery for art lessons.

## Young Audiences Assemblies

February 6, 2006 at 1:45 PM for Grades K-2	Body Vox Dance Company
February 7, 2006 at 1:45 PM for Grades 3-5	Joint Forces Dance Company
April 4, 2006 at 9:00-9:50 AM for Grades K-2 10:00-10:50 AM for Grades 3-5	Spyglass Theatre—Secret Life of Bugs
May 11, 2006 at 1:45 PM for Grades K-2	Captain Bogg and Salty Pirate Music
May 19, 2006 at 1:45 PM for Grades 3-5	Bochinche—Musical Tour of the Caribbean

All shows are 50 minutes long and will be held in the cafeteria.



## Young Audiences Residencies

January 10-27, 2006 for Grades K-5	Clay Hoffman—Wire Sculpture/Cartooning
March 6-9, 2006 for Grades K-1	Dawn Phelps McConnell—Painting
March 13-23 for Grades 2-5	Carol Basch—Mural Painting
May 23-June 9 for Grades K-5	Karie Oaks—Clay

To Be Scheduled: Portland Taiko for Grades 3-4! Look for update soon!

Each class has four sessions with each artist.

Check the Young Audiences website for a complete description of artists and programs:  
[www.youngaudiences.org](http://www.youngaudiences.org)



## 2005 Excellence in International Education Prize Winners

**ELEMENTARY/MIDDLE SCHOOL PRIZE |**  
**Richmond Elementary School, Portland, OR**

Portland Public Schools' **Japanese Magnet Program** was founded in 1989 with two kindergarten classes at Richmond Elementary, an urban, public school in Portland, Oregon. 60% of the student body is white and over 20% are of Asian or Pacific Islander heritage. Since its inception, the program has been expanded to a full K-5 sequence, serving approximately 300 students.

It is a model early language program, using partial immersion as the central organizing principle: children spend half the day learning in Japanese and half learning in English. The language curriculum encompasses oral language, written language and culture, with clear emphasis on children not only learning how to read and write, but also how to understand aurally and speak. Each grade level is team-taught, with both English and Japanese instructors. Language proficiency is assessed using one-on-one interviews, which are videotaped and monitored at the end of each year. By the 5<sup>th</sup> grade, students are assessed according to Oregon Japanese Oral Proficiency Assessment procedures, resulting in a 15-minute ratable performance sample. Richmond's Japanese Magnet Program has become a premier example of how immersion programs, particularly in the early grades, produce much stronger levels of language competency than other approaches to language learning.

Japanese culture is woven throughout all disciplines: math, reading, writing, social studies, language arts, music and art through the study of Japanese holidays. Students perform skits, songs and poetry in Japanese during all-school morning assemblies, and some students have been invited by the Japanese Consulate to speak as part of an annual speech contest. Students participated in fundraising drives and wrote letters of sympathy after the earthquake in Niigata, Japan, and in response to the tsunami. Richmond Elementary families also have the opportunity to host Japanese exchange students and interns from sister schools in Japan, who spend time in Richmond Elementary classrooms. Oya No Kai, a parent-run non-profit organization, raises funds for an annual trip to Japan for 5<sup>th</sup> grade students. Students learn how to produce Japanese characters by typing combinations of English letters on computers and create multi-media self-portraits to share with their email pen pals in Japan.

What's the secret to Richmond's longevity and success? The following elements were shared with the audience at the December 8<sup>th</sup> awards ceremony by Kathryn Anderson, Interim Principal; Catherine Malone, Richmond parent and Oya No Kai Board Member; and Barbara Adams, Area Director for the Cleveland/Franklin Cluster in Portland Public Schools:

1. Early childhood beginning allows us to capitalize on young students' natural propensity for language learning. Richmond will add an additional class of kindergarten to increase enrollment by 50% and expand to PreK in Fall of 2006.

2. Collaborative planning and partnerships with leaders from the Japanese community (e.g. Japanese Consulate, Japanese Garden Society, Nikkei Legacy Center, Japanese American Society), local and state government, higher education (Carl Falsgraf at University of Oregon) and corporations (e.g. Yoshida's, Honda, Toyota, Nike, etc.) have been essential to our successful Japanese language immersion program. Our model has been replicated by PPS for our new Chinese immersion program with funding from the Dept. of Defense.
3. Experienced teaching teams at each grade level work together to plan carefully integrated instruction for the partial immersion model. Teams expand through middle and high school pathway.
4. Integration of Japanese culture and language into the core curriculum – a process that naturally models and extends students' interest and study to other cultures, as well.
5. Native-Japanese interns at each grade level support students at school and at home via homestays.
6. Nationally recognized Japanese curriculum for K-12 that covers oral language, written language (Kanji, Katakana and Hiragana), and cultural perspectives.
7. Menu of extended day and year enrichment classes to support language growth and cultural appreciation (e.g. classes in Taiko, calligraphy, kendo; Kurabu summer camp; 5<sup>th</sup> grade trip to Japan; hosting interns and visiting students from partner schools in Japan).
8. Extremely committed and involved parents enable educators to focus on continual improvement of instruction. Oya No Kai, Inc. is a non-profit organization to support and promote Japanese culture and enrichment PreK-12.

## Portland Public Schools

2276 SE 41st Street  
Portland, OR 97214

Phone: 503-916-6220  
Fax: 503-916-2665  
Website: [www.richmondjmp.org](http://www.richmondjmp.org)

### Japanese Magnet Program



### RICHMOND FOUNDATION TOTALS THROUGH

Kindergarten Class Donations	\$1,449 (8 families)
1st Grade Class Donations	\$3,305 (11 families)
2nd Grade Class Donations	\$1,700 (5 families)
3rd Grade Class Donations	\$2,845 (9 families)
4th Grade Class Donations	\$1,030 (6 families)
5th Grade Class Donations	\$1,640 (5 families)

**TOTAL CLASS DONATIONS \$11,060 (37 total families)**

Our balance in Foundation less the cost of thank you cards and transaction fees is \$12,412.94. We have yet to receive \$200 from Intel, \$1,388 from Barnes and Noble and I haven't talked to Mike from Noho's about our total from the Craft Fair. So we're over \$14,000.

Thank you for your support to Richmond's Foundation! Every donation makes a world of difference for our students.

## EXCITING PLAYGROUND NEWS !!!

After hearing proposals from 3 local playground companies, the playground committee has made a unanimous choice to hire Wildwood Playgrounds Ltd. ([www.wildwoodplaygrounds.com](http://www.wildwoodplaygrounds.com)) The feedback that the school community gave us over the week that the 3 proposals were up in the cafeteria was invaluable in our choice. Wildwood Playgrounds is certified to work with Portland Public Schools, and has an extensive history of designing playgrounds for different area schools and parks. Take a look at the structures at Laurelhurst Park, Irvington school, the Rose Garden or Hollyrood school to see examples of this company's work.

Now that we have made this important decision, we can start to fine tune the design for our Japanese theme playground. The North area that had previously been occupied by "the volcano" will have a large playstructure that will not only be physically challenging, but also spark imaginative play. The South area that previously had the swings will be directed more towards the younger Richmond kids, and will have wonderful age appropriate elements. Keep in mind that starting next year, Richmond will have 2 on-site pre-schools and 3 kindergartens!

As we now have an idea of the budget we can start to work of grant writing. Maylorie Townsend (mother of kindergarten Loralye) and Teresa Hill (mother of kindergarten Marty) will be spearheading this important task. The playground will be funded through a combination of existing PTA funds plus grants. All money brought in through [www.schoolpop.com](http://www.schoolpop.com) will also be directed to the playground. Because the cost of purchasing and then installing a playground is so high, we will probably be installing the playground in stages over a period of a few years. But we hope to have our first stage installed in time for the 2006-2007 school year. If anyone has connections with organizations that could help cover costs, please contact any member of the playground committee.

We will be working with the Richmond Neighborhood Association to make sure that the playground not only meets the needs of our students, but the greater community as well. We continue to invite input from all parents, and will be bringing a few key decisions to the Richmond kids through the student council.

I will continue to keep you informed about progress and