



# Richmond Newsletter

[www.richmondjmp.org](http://www.richmondjmp.org)

## Letter from PTA Co-President

Dear Richmond Families,

Next Wednesday, February 15th from 6:30 - 8:30 will be the Richmond all parent PTA Meeting. We will be having a speaker come and give the latest update about school funding and the May ballot measure. Our interim principal Kathryn Anderson will speak about how Richmond will be affected by the different funding options.

This is an important meeting to attend. We all need to be able to get accurate and up to date information about our school. Supervised child care will be available, and even Starbuck's gift card door prizes for a lucky few. So mark your calendar.

-Katy Wolk-Stanley  
Co-PTA President



Portland Public  
Schools

Volume 2, Issue 6

Friday, February 10, 2006

## CANCELATION OF VALENTINE DANCE

Several parents have inquired about plans for Richmond's traditional valentine dance. Folks are surprised to learn that we have had to cancel the dance because it's the policy of Portland Public Schools to allow dances for students at middle and high school only. Our district administrative policy states that "dances are not to be conducted for students below 6th, 7th and 8th grades". This policy has been in place since September 1, 2002.

Each of our classrooms plans to hold special valentine celebrations on Tuesday, February 14th. Students have been busy making valentine bags, boxes, and even giant origami bowls to collect their valentines from classmates. Given the excitement in classrooms this week, we're confident students will not miss the tradition of the dance.



### Inside this issue:

Foundation Update	2
Children's Museum	3
Auction Tickets	3
Spring Break Dates	3
NASA Vsits	4

# FOUNDATION UPDATE

Foundation has raised about \$17,000 this school year. While that's a substantial amount of money for a school that raised less than \$4,000 last year, the need for Foundation funds is more important than ever. Our school Foundation is the only way to raise money for FTE at Richmond School. A big thanks to the more than 40 families who have contributed anywhere from \$15 to \$1,200 to our school.

The loss of federal funding, property tax revenue and now the I-Tax expiring this spring will result in a 23% decrease in Portland Public Schools' revenue. The loss of I-Tax alone, which brings in 57 million dollars to our district, will result in losing the equivalent of 750 teachers or 75 school days; That's about 25% of our teachers and a huge chunk of our school calendar currently set at 170 school days. These cuts are painful to a district that has struggled since Measure 5 passed.

While Richmond School has also been impacted from the loss of neighborhood students, our school has lost quite a bit due to budget cuts through the years. Here's a list off the top of my head:

- Japanese classroom aides (replaced by our interns) were cut in 1994,
- Our music teacher was cut in 2001,
- Our librarian position became a library aide position in about 2002,
- Last year we lost our school counselor, a half-time secretary, and a quarter-time lunch room/playground monitor.
- 2004-05 also marked the departure of \$83,000 in immersion funding to provide teacher planning days, field trips and a variety of other expenses as well as half of last year's funding for general operational expenses.

Other changes have impacted the operation of our district. These include an almost non-existent landscaping and grounds budget to maintain more than 90 buildings, outsourcing our custodians, and reducing PPS school administration to less than 4 percent of the total operating budget - PPS beats even the highly-regarded Mercy Corps which maintains an administrative budget of 8 percent!

The good news is that we currently benefit by a strong and effective school superintendent, a generally strong, all-volunteer, school board and a principal with the vision to highlight and grow our unique Japanese language and cultural program. We have the leadership and now need the financial tools keep our program strong.

If you have not contributed to our Foundation, the time has never been more important! If you have pledged to contribute, please continue to give. We have asked for \$600 per student, but any amount gets us closer to our goal.

We know that parents are pulled in many ways and we appreciate whatever you can manage. If you have questions about how your money is used, please feel free to contact me at [punches1@msn.com](mailto:punches1@msn.com), Andy Felcher at [felcher@comcast.com](mailto:felcher@comcast.com), or Kathryn Anderson at [keanders@pps.k12.or.us](mailto:keanders@pps.k12.or.us).

We also need more people to get involved to share the good news about our school because approximately 80% of Portland residents don't have school-age children. You may reach Chris Hogness, PTA member and legislative liaison, at [chogness@swmedctr.com](mailto:chogness@swmedctr.com) for more information.

Thank you!

Jill Punches  
Richmond Foundation Co-Chair

## RICHMOND & CHILDREN'S MUSEUM PARTNERSHIP

Portland Children's Museum is going to host an exhibit called "Five Friends from Japan" from September 2006 through December 2006. This exhibit was created by the Boston Children's Museum and Capital Children's Museum and the purpose of the exhibit is to introduce five Japanese children's school and private lives to children in the U.S. Rave reviews have come from all the museums who have hosted this exhibit. The Portland Children's Museum hopes this exhibit will have a great cultural and educational influence on children and their parents in the Portland area. WE hope the exhibit will be a chance to

During the exhibit, the Children's Museum will have some public education programs/workshops. Richmond has been contacted to become a partner for this exhibit in the hopes our students and teachers will be able to help the

museum educate children in Portland.

According to the Children's Museum staff, the ways we can help are unlimited. Children can perform and/or teach Japanese songs or dance to the visitors. Or, they can lend us some Japan-related art products to hang on the wall in or outside of the exhibit room. Or, children can perform some Japanese music instruments. We believe this is going to be a great opportunity to showcase the benefits of Japanese immersion at Richmond.

Look for updates in future issues of the newsletter or on the Portland Children's Museum website at:

[www.portlandchildrensmuseum.org](http://www.portlandchildrensmuseum.org)

## DO YOU HAVE YOUR TICKETS TO RICHMOND'S BIG BASH?



The evening of Friday, March 10th is the night for Richmond's annual auction "Our Dreams Take Flight" to raise money for our 5th grade trip to Japan, Oya No Kai and the Richmond Foundation. This party is going to be great fun, so please make sure you have:

- Reserved your sitter for the night (5:30-11:00 PM).
- Purchased your tickets. Tickets are \$45 and guarantee you to a wonderful evening with friends at the Multnomah Athletic Club. Lost your invitation? Patsy has extras in the office. You can drop your ticket order and invitation in the Oya No Kai-Auction box in the office.

## SPRING VACATION DATES



Mark your calendar!

Spring vacation is scheduled for Saturday, March 25 to Sunday, April 2, 2006.



## Portland Public Schools

2276 SE 41st Street  
Portland, OR 97214

Phone: 503-916-6220

Fax: 503-916-2665

Website: [www.richmondjmp.org](http://www.richmondjmp.org)

## Japanese Magnet Program



Portland Public Schools  
Japanese Magnet Program

## CALENDAR FOR FEBRUARY 10-28, 2006

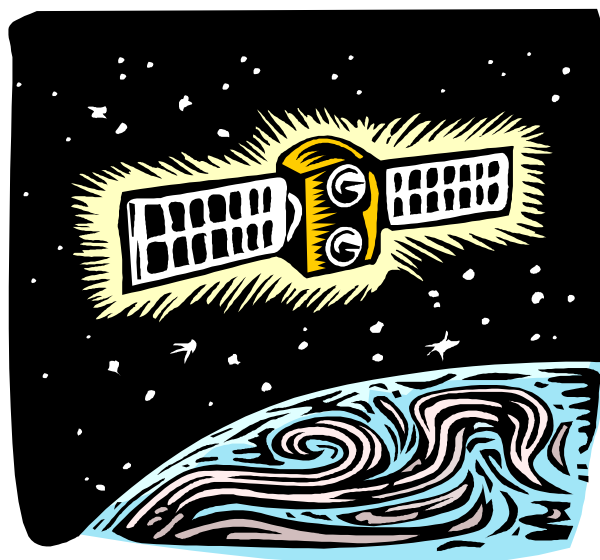
Fri. Feb. 10	Kobe students and staff arrive in Portland for Richmond visit Scrip pick up day
Mon. Feb. 13	Site Council meeting at 3:15-5:15 PM Fundraising committee meeting at 6:30-8:30 PM
Tues. Feb. 14	Valentine's Day!
Wed. Feb. 15	Parent coffee with principal at 8:45-9:30 AM Trip performance rehearsal at 3:00-4:00 PM General Parent Mtg. Hosted by PTA at 7:00 PM in cafeteria
Fri. Feb. 17	Kobe students and staff depart at 8:00 AM Parent coffee with principal at 8:45-9:30 AM
Mon. Feb. 20	NO SCHOOL—Presidents Day
Tues. Feb. 21	NO SCHOOL—Teacher Professional Development Day
Wed. Feb. 22	NO SCHOOL—Teacher Professional Development Day
Thurs. Feb. 23	NASA visits Richmond (see article below)
Tues. Feb. 28	Scrip order day Oya No Kai board meeting at 6:45 PM

## NASA VISITS RICHMOND ON THURS. FEBRUARY 23!

Aya-sensei, our Japanese classroom teacher in 3rd grade, has organized a day for scientists from NASA to visit Richmond and meet with students in all grades. The schedule for the day looks like this:

- Assembly for grades K-2 at 9:15 AM in the cafeteria
- Assembly for grades 3-5 at 10:00 AM in the cafeteria

Please join us for this wonderful experience! We'll have chairs set up for parents who wish to listen to the assembly of their choice.



NASA'S COMING TO RICHMOND!