

January 12, 2007

www.richmondjmp.org



JAPANESE IMMERSION AT RICHMOND ELEMENTARY SCHOOL

Richmond Shinbun

2007/08 Staffing & Enrollment

Dear Richmond Families,

We're approaching the time of year when we anxiously await news about the amount of staff positions Richmond will receive from Portland Public Schools' staff allocation process. The amount of *full-time equivalent* (FTE) positions we receive will allow us to make decisions about services to students and families beyond our classroom and PE program. We hope to receive an increase in our staff allocation for 2007-08 due to several key factors:

- **The strong support for Richmond's Japanese immersion program by our Area Director, John Horn.** Mr. Horn has promised to urge our district for additional staff for immersion programs because he recognizes the value of language immersion education and understands this work requires specialized support from, in Richmond's case, a Japanese immersion specialist. He also believes every school needs a wide array of enrichment services: extra reading support, music, PE, art, library and counseling.
- **Our growing enrollment.** Richmond currently serves 361 students in grades PreK to 5 and we are projected to serve 415-431 in 2007-08. An enrollment over 400 gives us a small staff boost of .25 FTE plus two additional staff positions for our expanded first grade. This small .25 FTE would allow us to:
 1. Maintain full funding for our library position, and
 2. Apply additional FTE we might receive to our half-time reading specialist and a full-time Japanese immersion specialist. Note: it's likely we will need funding from Richmond's Foundation to add both positions.
- **A stronger Oregon economy and greater consensus about the importance of stable school funding among Oregon's legislature.**
- **The successful bond measure passed by voters in Portland Public Schools last November 2006.**

When will we learn the actual staff allocation for 2007-08? We expect to receive our staff allocation the week of February 12-16 after Superintendent Phillips presents the district budget to the Board of Education on February 12th. This gives me three weeks to work with our staff, Site Council and parent groups to get input on Richmond's final staffing plan before submitting it to our Area Director the week of March 5-9.

I'll keep you up-to-date via the *Richmond Shinbun* should there be any changes to the staffing timeline. I'll also schedule a family information night toward the end of February so parents have a chance to hear the details of our staff allocation, ask questions and give input about our final staff plan. As always, please do not hesitate to ask questions and share your ideas!

Fondly,

Kathryn Anderson, principal

Inside this issue:

Wanted: Intern Host Families!	2
Cultural Events in January and February	3
Check our Lost & Found/ PTA News	4
Richmond's Foundation Benefits YOUR Child	5
Auction Updates—One Month to Go!	5
Important PTA Meeting on Wed. Jan. 24	6
Coffee to Save Richmond's Elm Trees	7



Portland Public Schools recognizes the diversity and worth of all individuals and groups and their roles in society. All individuals and groups shall be treated with fairness in all activities, programs and operations, without regard to age, color, creed, disability, marital status, national origin, race, religion, sex or sexual orientation.

Board of Education Policy 1.80.020-P

Wanted: Intern Host Families!

I hope everyone had a wonderful holiday! It is hard to believe that it is again time to look for host families for another group of interns joining the JMP community. This time, there will be 13 interns arriving in March to work with our children for until next March: one for Grant, two for Mt. Tabor and ten for Richmond (two interns for Pre-K, K, and 1st grade and one each for 2nd-5th grades).

A big thank you to all the current and past host families for their generous hospitality and help with the interns! We are so lucky to have these wonderful interns helping our teachers and children. Host families are absolutely critical for making their stay in Portland wonderful and memorable.

PLEASE CONSIDER HAVING AN INTERN FOR 4 MONTHS. Hosting an intern is a very good way to support our schools and the JMP program. An intern can be a wonderful addition to your family. Your child/children will benefit from having a native Japanese speaker at home, from exposure to linguistic, social and cultural aspects. Many host families find themselves establishing life long friendships with their interns, some even visiting them in Japan! All in all, it is well worth adding a temporary family member.

Let me know if you are interested, and do not hesitate to contact me if you have any questions or concerns.

Masako Wieber
Oya No Kai intern support
503-281-0956
masako.w@comcast.net



Wealth of Cultural Events in Jan.—Feb.

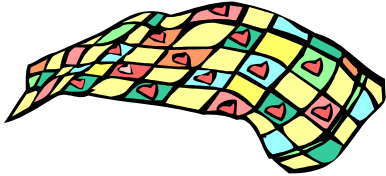
We are so fortunate to live in a city with a wide variety of cultural art experiences suitable for the whole family. Here's a list of some of our favorite experiences for you and your family to enjoy in the weeks ahead:

Saturday, January 13

New Years Celebration at the Japanese Garden 1-3:00 PM

Sunday, January 14—February 25

What Remains: Art Quilts & Poetry on Japanese Americans in Internment Camps, located at the Oregon Nikkei Legacy Center at 121 NW 2nd Ave. Tues.—Sat. at 11-3:00 and Sun. at 12-3:00 PM.



Friday, January 26

Portland Taiko assembly at Richmond for students in grades 3-5. *Is That Thunder?* starts at 1:00 PM in the cafeteria. Parents and siblings welcome to attend.

Saturday, January 27

Oregon's Poet Laureate, Lawson Fusao Inada, hosts a jazz and spoken word concert, *Sentimental Journey*, at the First Unitarian Church (SW 12th and Main) in downtown

Portland. Concert starts at 8:00 PM and tickets are available by calling 503-774-2511 or via email at nwartmgt@bigplanet.com Tickets are \$20 for adults and \$15 for seniors and students.

Sunday, January 28

Mochitsuki 2007 at PCC Sylvania Campus from 12:00-4:00 PM. Performances at 1:00 and 3:15 PM. Richmond will have a booth at the festival and our kindergarteners will perform at 12:10 PM.

Saturday, February 3

Setsuban—Beginning of Spring!

Saturday, February 17

Day of Remembrance—Civil Rights program presented by the Japanese American Citizen's League entitled *Fighting for our Rights in an Era of Terror* 1:00—3:00 PM

Sunday, February 18

Jake Shimabukuro concert in Hood River, Oregon at 4:00 PM

Come Join the Fun at the 2007 Auction

Maybe you've decided not to attend this year's auction – well you can still participate as a volunteer.

Volunteer Coordinator is Karen Alexander (second grade parent) karen.alexander@comcast.net 503.956.0309

We need volunteers for: **Thursday, February 8**—Daytime and evening hours to assist in the set up of the silent auction area.

Friday, February 9 -Daytime hours to put the finishing touches on the silent auction area, set up the registration area and decorate the live auction/dinner space. Late afternoon and evening positions in-

clude: coat check, greeters, data entry/check out, registration, silent auction closers, live auction assistants (handlers, spotters, recorders, runners), cashiering/accounting, will call and clean up.

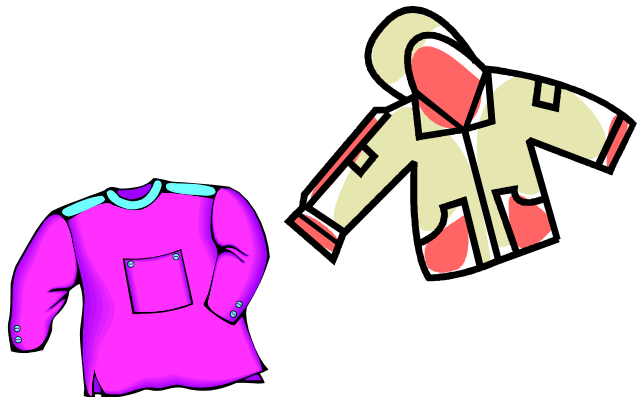
Lunch, dinner and snacks will be provided for all volunteers. Please contact Karen Alexander to indicate interest in a position and for more information.

Thank you to the JMP Community for all of your support of this great program and the wonder and opportunities it provides for our children and our community.

Please Check Richmond's Lost & Found!

Wondering where your child put that special sweatshirt, fleece jacket or down-filled coat? Chances are VERY good that all those lost items can be found in Richmond's Lost & Found!

Where's the Lost & Found at Richmond? You'll find it in the breeze-way between the cafeteria and the main building. As you walk toward the main building from the cafeteria, look to the left side of the double doors just before climbing the two steps leading toward the double staircase. **Unclaimed clothing is sent to the Portland PTA's Clothes Closet at the end of every month.**



Distribution of Materials Notice to Families

Occasionally, we send notices home with students about student activities from non-school groups. The district also maintains a website listing additional non-school activities.

Go to www.pps.k12.or.us and click on Non-School Activities for Youth. Then click on the words Electronic Display Area to see the list of events, classes, and activities. Please note that the groups providing this information are not endorsed or sponsored by Portland Public Schools. District policy prohibits discrimination on the basis of age, color, creed, disability, marital status, national origin, race, religion, sex, and sexual orientation. BP 1.80.020. Not all outside groups comply with the District's non-discrimination policy. Families are strongly encouraged to review all materials closely.



Rudy Rudolph, Director of School Support
916-3367, brudolph@pps.k12.or.us

P. T. A. News!

Richmond Neighborhood Association Pleased: Our new playground has met with resounding applause from children, parents, and our Richmond Neighborhood Association who generously donated to make the playground dream a reality. Please take time to visit our website for great pictures taken on the opening day of the playground, and please be sure to thank the entire playground committee without whom this playground never would have gotten "in" the ground. They are Katy Wolk Stanley, former committee chair, Gary Kuney, current committee chair, Lisa Bosca, David Hill, Teresa Hill, Colleen O'Brien, and Maylorie Townsend. Great job team and many, many thanks!!!

IMPORTANT PTA MEETING!!! On **Wednesday, January 24 from 7 to 8 in Richmond's cafeteria**, we are having a PTA meeting to discuss Cascadia Behavioral Health Center (a treatment center providing mental health services/addiction services) located directly across the street from us at 2415 SE 43rd. Multnomah County Commissioner, Lisa Naito, her Policy Advisor, Carol Wessinger, and Leslie Ford, Director of Cascadia Behavioral Health have all been invited to attend, and all have accepted the invitation. Please see details about this meeting on page 6 of this newsletter.

Kristina Kallen, PTA President

Richmond's Foundation Benefits YOUR Child's Education

We were able to keep our dedicated library aide and add a Reading Specialist this year, thanks to the pledges of more than 40 Richmond families to the Richmond Foundation. A total of almost \$70,000 was raised through parent pledges and fundraisers for Richmond's Foundation last year. So far this year we've already raised just over \$10,000 toward staff position for 2007-08.

What staff positions will be funded? We're aiming for a Japanese Immersion Specialist to provide enrichment and curriculum support for our classrooms. This year, state and local funding is, at the moment, looking possibly, maybe, perhaps a little brighter than last year. So it is impossible to tell, at the moment, if funds raised this year will need to be used for our librarian and reading specialist again...or if these positions will be funded by the district next year to enable us to use Foundation funds for a Japanese Immersion Specialist.

Later this month, from an undisclosed location, the Richmond Foundation will have a phone-a-thon in support of our Parent Pledge Drive. Like last year, we are

asking families in grades 1-5 to donate \$265 per semester. Why this amount? This is the amount kindergarten families pay each month for tuition each month. Since everyone at Richmond is used to budgeting this amount for Richmond during kindergarten, we feel this is a reasonable amount for families in grades 1-5 to continue to give....and twice per year is much less painful than the total kindergarten tuition bill. (And of course, kindergarten and preschool families are more than welcome to donate if they wish.)

If you're interested in helping with the phone bank, please call Andy Felcher at 503-231-1641 this week to volunteer later this month.

If you'd like to not receive a call, give now!!! Checks can be dropped off in the Richmond office in the Foundation mailbox.

Domo Arigato to all families who have already donated. We greatly appreciate your contribution to our children's education.

Auction Updates! Just One Month To Go

Hello Families,

We are just **one month away** from this year's "Our Dreams Take Flight" auction. We are looking forward to a wonderful evening of fund raising and camaraderie. This year, for something new, we are pleased to announce that we will have live music at the auction. We will be enjoying the lovely sounds of the koto performed by students from the Seiha Miyabe Kai School of Koto. In addition, the Japanese pop band, A-key Kyo, will be performing after the oral auction ends around 10:00pm.

Tickets have been mailed to all JMP families. If you would like additional tickets to present to friends, family members or business associates, they are available on the round auction table near the office at Richmond. Please RSVP with payment to reserve your seat at the auction.

In order to meet our catalog printing deadlines, Friday marks the last day of procuring IF donors want their names printed in our catalog. Good news: we will be accepting donations to the end of Feb.8 and an addendum will be provided on auction night listing additional donor names.

Thank you to everyone who has brought in donations so far. Here is the class tally as of January 3, 2007.

- Preschool: 5 donations
- Kindergarten: 24 donations
- 1st Grade: 9 donations
- 2nd Grade: 30 donations
- 3rd Grade: 19 donations
- 4th Grade: 23 donations
- 5th Grade: 44 donations

Remember, we can only count your donation if you note the class on the donor form. The winning class will be awarded \$500 for their class fund this spring.

As always, thank you for your support. Please contact Melanie (wmdrj@quik.com) or Jody (littlesj@qwest.net) with any auction questions or concerns.



IMPORTANT PTA MEETING on Wednesday, January 24 from 7 to 8:00 PM in Richmond's cafeteria

We are having a PTA meeting to discuss Cascadia Behavioral Health Center (a treatment center providing mental health services/addiction services) located directly across Division from us at 2415 SE 43rd. Multnomah County Commissioner, Lisa Naito, her Policy Advisor, Carol Wessinger, and Leslie Ford, Director of Cascadia Behavioral Health have all been invited to attend, and all have accepted the invitation.

The issue: Recently I learned that Cascadia had moved their Psychiatric Services department from their downtown location to the location directly across the street from us. I began a fact-finding mission about what exactly this entails, if sexual predators are included in these services, are criminals being treated there, is it a 24-hour facility, etc.

Five years ago, I worked with Cascadia to get a good neighbor agreement signed with them after one of their clients went to Cascadia for service, was discharged after approximately 2 hours there, and came to the sidewalk surrounding our playground and began to act inappropriately (not on the playground but outside the fence). Thanks to our terrific Richmond teachers, all the children were called inside and the school went on lockdown because this man stayed on the sidewalk acting inappropriately. The police were called and the man was removed, however, unfortunately that night the man killed himself in the Mt. Tabor Reservoir. Because of that incident and because we were having a large problem with people parking their vehicles around our playground and living in those vehicles, I began working with the Portland Police, Cascadia, the City of Portland, and our principal at the time to work to resolve this issue. I appreciated their willingness to work together and we got an agreement signed.

Unfortunately, this time I am having some difficulty getting straight and candid answers about exactly what services Cascadia is offering at the Division location and my concerns seem to be met with polite hostility. I am respectfully requesting that as many parents and grandparents as possible attend this meeting on 1/24 to show Cascadia, Commissioner Naito, and Policy Advisor Wessinger that we Richmond parents are committed to ensuring our children's safety, and we would like clear answers so we can make informed decisions.

Kathryn did speak directly to Leslie Ford on Wednesday evening, and she sent me an email summary of their conversation and has graciously allowed me to share this information with you. The email is listed in italics below.

"Ms. Ford told me Cascadia has been providing excellent care for patients and the community since 1990, so I requested a report of all the services they've provided at the SE 42nd and Division site for the years 1990-2007. I asked for this in writing, since she was not able to answer many of my questions about the patients for each service category:

PSRB - Psychiatric Security Review Board - Patients who are adjudicated and determined by this State board to be guilty of a crime, but insane and unable to recognize the severity of the crime or the fact they've actually committed a crime. The crimes committed by this group cover all possible felony charges. She did not believe any current patients have been convicted for sex crimes, but was not certain and acknowledged it's possible. According to Ms. Ford, PSRB patients have been served at the Division center since 1990 with a one-year hiatus in 2005-06 in downtown Portland. The cost of space downtown was the reason to move PSRB services back to the Division site. She was able to confirm PSRB patients have a one-hour grace period for check-in at the clinic or their home, but also admitted there is no policy to notify Richmond, PPS Security or Portland Police if a patient does not meet his/her check-in time.

Ms. Ford did not know how many PSRB patients were currently being served at the Division center, nor could she tell me the ratio of patients to case managers. Currently, the Cascadia Division site serves more PSRB patients than in previous years, but Ms. Ford was not sure exactly how many more are currently under care. She could not give me a list of crimes committed by the PSRB patients, nor would she give me examples of crimes currently associated with patients. The only two examples of crimes she would identify were trespassing and arson for people no longer patients. No answer to my question about the potential for parole violations with PSRB patients two blocks from Richmond.

Outpatient Addiction - This service covers all addictions from alcohol to hard-core drug use. Ms. Ford had no idea how many patients are served at the Division center. She estimated that Cascadia centers served more than 20,000 patients in 2006, but could not give me a number or percentage served at Division.

Outpatient Gambling Addiction - Same set of circumstances at the drug/alcohol addiction services described above.

Urgent Care - This provides basic emergency care for physical needs as well as emergency consultation and service for mental health and addiction needs. Multnomah County contracts with Cascadia to provide urgent care services. The Urgent Care Clinic is open until 10:00 PM and opens at 7:00 AM or 8:00 AM each morning; Ms. Ford was not sure what the opening time actually was in the Urgent Care Clinic and I expressed a number of concerns about the 8:00 AM time which coincides with Richmond's start time. Ms. Ford informed me Cascadia would NOT alter their clinic time to suit Richmond's needs. I told her I viewed the Urgent Care Clinic as a service which duplicated the many hospital emergency rooms located throughout the Portland metro area and wondered why Cascadia continued with this duplicative service if Cascadia's limited financial picture was the reason behind the decision to move PSRB services back to the Division site and close proximity to young children. No answer to this question from Ms. Ford.

Ms. Ford believes Richmond parents need to meet with Cascadia representatives and a mediator from Resolutions NW. I told her I would happily arrange a Q & A session with Richmond parents and Cascadia representatives, but would not commit to a mediator at this point, since we're simply trying to get the facts. She would not give me any dates for such a meeting over the phone, but promised to get back to me."

Buy Coffee to Support Richmond's Elm Trees – every week!

Decaf now \$11/pound

Our school grounds are home to 18 mature Elm trees – about half of the Elms in the Richmond neighborhood. Elms are susceptible to Dutch Elm Disease (DED) and many communities - including Portland - have lost the Elms trees lining their streets to this disease. Richmond's Save Our Elms chapter, a 501(c) 3 non-profit, partners with Portland Roasting to raise money for inoculations and pruning of our trees through the sale of coffee.

The Richmond chapter of Save Our Elms currently has about \$1800 in the bank to use to inoculate the trees once every three years with a fungicide to protect them from Dutch Elm Disease (DED). Our trees were inoculated in 2001 and 2004 and are due for inoculation this summer, all with the help of generous volunteers. Our chapter has also helped PPS pay a portion of tree pruning costs. Fungicide prices vary every year, but we can expect inoculant prices to cost \$3,000 this summer.

Decaf price change (still a bargain!)

Please consider helping our elm trees throughout the school year. Due to a price increase, Save Our Elms sells Portland Roasting's delicious, environmentally friendly regular coffee for **\$10/lb** for and decaf coffee for **\$11/lb**. \$4.50/lb. of each pound goes to Save Our Elms. We accept donations as well.

Portland Roasting descriptions:

All coffees for Richmond, including the decafs, are our Farm Friendly™ Direct coffees because as important to us as the quality of our coffee is our social responsibility. We strongly believe that we can make a positive difference in the coffee world through direct, socially responsible coffee sourcing. The foundation of this coffee sourcing is our Farm Friendly Direct™ Programs. These Programs involve paying growers a premium for their coffee with 100% of the premium going to farm and community projects. All of these projects are designed to give back directly to the farmers - furthering the long term sustainable infrastructure. These are extremely important issues to Portland Roasting!

Ethiopian – Kochere: This coffee is part of Project H.O.P.E., which stands for Hope and Opportunity for the People of Ethiopia. We combine Portland Roasting's efforts with our coffee broker and farming cooperative to build a much needed community center for the Ethiopian farming community of Kochere. This community hub will provide a common meeting place for educational purposes, as well as a vital medical dispensary for the people of Kochere.

French Organic – Certified organic; dark roast

Farm Friendly Direct, SWP (Swiss Water Process) French Decaf – directly sourced, chemical free, dark roast.

Farm Friendly Direct, SWP (Swiss Water Process) Morning Decaf – directly sourced, chemical free, light roast.

Please put orders in the Save Our Elms mailbox in the school office or email Mary Klinger at dustin-mary@comcast.net. Please include payment in the order (make checks to *Save Our Elms* only – no cash please!) or arrange to get a check to Mary before picking up your coffee. For orders submitted by 8:00 AM Thursday, coffee will be available in the office by Friday afternoon.

French Organic ground and Ethiopian – Kochere ground coffees will be available for purchase in the office from Patsy at \$10 a pound. THANK YOU FOR YOUR CONTINUING SUPPORT OF THIS PROGRAM!

Save Our Elms Coffee Order Form

Date _____

Name _____ Phone _____ email _____

_____ Donation amount. Save Our Elms is a non-profit 501(c) 3 corporation in the State of Oregon. EIN: 31-1581092.

Coffee	Ground	Whole Bean	Totals
Ethiopian - Kochere			\$10/lb x lbs. = \$
French Organic			\$10/lb x lbs. = \$
SWP French Decaf			\$11/lb x lbs. = \$
SWP Morning Decaf			\$11/lb x lbs. = \$
Totals			

Questions? Please contact Mary Klinger at (503) 234-5147 or dustin-mary@comcast.net for ordering and general questions or Paul Gilles at paul@portlandroasting.com for coffee-related questions.



CALENDAR FOR JANUARY 12-31, 2007

Portland Public Schools

JAPANESE IMMERSION AT RICHMOND ELEMENTARY SCHOOL

2276 SE 41st Street
Portland, OR 97214
Phone: 503-916-6220
Fax: 503-916-2665
Website: www.richmondjmp.org

Japanese Magnet Program

Richmond office hours
are 7:30 AM—4:00 PM

- Fri. Jan. 12 Kindergarten to the Children's Museum 9:30 AM to 1:00 PM
Scrip pick up day
- Sun. Jan. 14 Exhibit at Nikkei Legacy Center 12-3 PM (see page 3 for details)
- Mon. Jan. 15 **NO SCHOOL**—Martin Luther King Jr. Day
- Mon. Jan. 22 Scrip order day
- Wed. Jan. 24 Young Players Beginning Acting Class begins at 2:20-3:20 PM
PTA Meeting in Richmond 's cafeteria at 7-8:00 PM
- Fri. Jan. 26 Assembly for grades 3-5: Taiko, Is That Thunder at 1:00 PM
Scrip pick up day
- Sat. Jan. 27 Lawson Inada's jazz and spoken word concert at First Unitarian Church (SW 12th and Main); see page 3 for details
- Sun. Jan. 28 Mochitsuki 2007 at PCC Sylvania Campus 12-4:00 PM
- Mon. Jan. 29 Switch Day! Morning and afternoon classes switch.
- Wed. Jan. 31 **NO SCHOOL**—Professional Development Day

Cafeteria Lunch Menu Changes



The daily lunch menu published by Nutrition Services will be one day behind the printed menu until Monday, January 22nd. For example, the lunch menu for Friday, January 12th is the menu for Thursday, January 11th.

11TH ANNUAL JAPANESE AMERICAN NEW YEAR CELEBRATION

Mochitsuki2007

Sunday, Jan. 28, 2007 • Portland Community College Sylvania Campus (12000 SW 49th Avenue, Portland)
FREE PARKING • TriMet routes 44 & 78 • Latest schedule and info at www.oregonnikkel.org or (971) 226-3571

MOCHI DO ABOUT NOTHING

Performances at 1:00 PM & 3:15 PM
Performing Arts Center

Featuring

LAWSON INADA

Poet Laureate of Oregon

PORTLAND TAIKO

Asian American drum performance group

ROBERT KIKUCHI-YNGOJO

Internationally renowned storyteller

TANUKI TAIKO

FUJINAMI-KAI

SAHOMI TACHIBANA

Admission

Adults \$12, Students/Sr's \$9, Children \$5
Includes admission to the Cultural Fair

Tickets from Brown Paper Tickets
1-800-838-3006 or BrownPaperTickets.com

Tickets are subject to convenience charge
All Ticket Sales final

CULTURAL FAIR

Noon to 4:00 PM, College Center
Suggested donation of \$2 for adults & \$1 for children

MOCHI POUNDING

SUSHI & JAPANESE SNACKS

IKEBANA

ICE CARVING

CALLIGRAPHY

Hands on activities for all ages

COMMUNITY STAGE PERFORMANCES

Sponsored by

Japanese American Citizens League • Portland Taiko
Oregon Nikkei Legacy Center
Portland Community College Multicultural Center

Supported by

Nikkei Jin Kai • Japan America Society of Oregon
The Consulate General of Japan