

January 19, 2007

www.richmondjmp.org



JAPANESE IMMERSION AT RICHMOND ELEMENTARY SCHOOL

Richmond Shinbun

Tea House Arrives at Richmond

Dear Richmond Families,

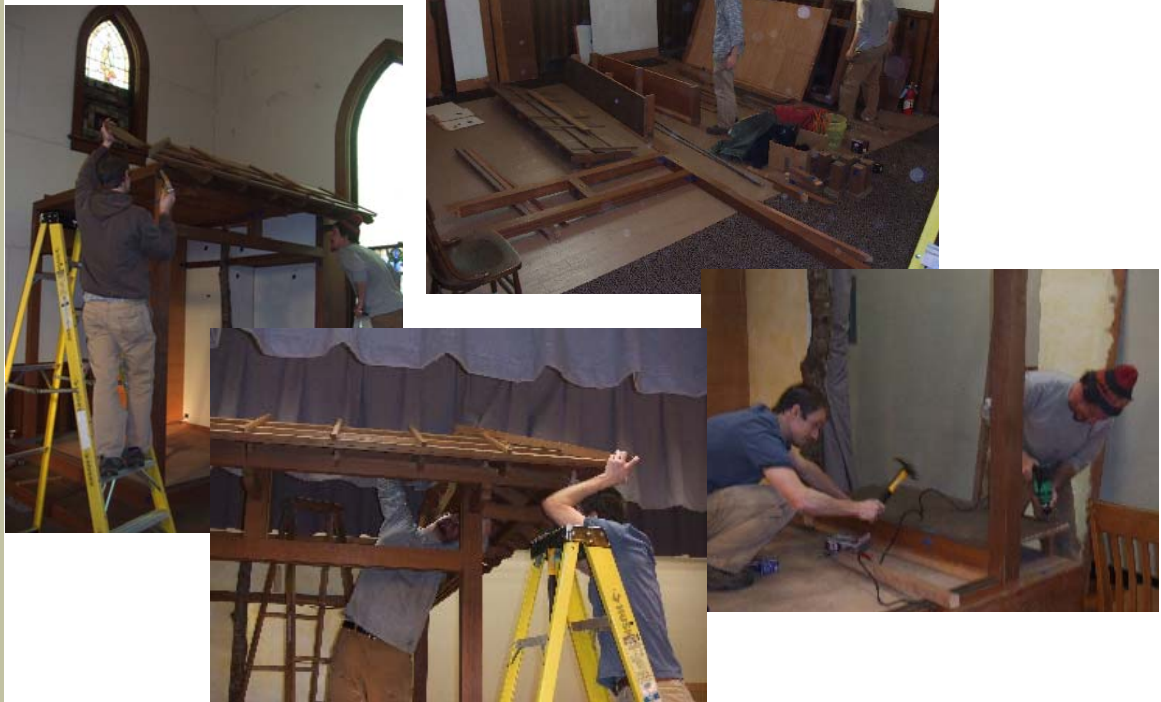
The tea house is finally installed at Richmond!! Volunteers Jason Greene and Dave McDonald did a fantastic job thanks to the coordination, painting and encouragement of Richmond parent, Catherine Malone. There are a few details and touch-ups that need to happen before it's ready to be used by Richmond students, but it's looking great and very prominent on the stage in the cafeteria. Please join me in thanking:

- Henjyoji Temple for their gracious donation of the tea house to Richmond
- Richmond's Cultural Committee: Catherine Malone (chair), Linda Insako Angst, David Jacobsen, Yoshiko Kamata, David Komeiji, Meg Matsushima, Monica Mueller, Nina Nakagawa, Amy Osaki, Doug Smith, Sadafumi Uchiyama, Alison Wolcot, and
- Oya No Kai for their help with funds to pay for truck rental to move the tea house to Richmond from the Henjyoji Temple.

We're a very fortunate school to have such wonderful support from our community.

Domo arigato gozaimasu!

Kathryn Anderson
Principal



Inside this issue:

Wanted: Intern Host Families!	2
Cultural Events in January and February	3
PTA News	4
Richmond's Foundation Benefits YOUR Child	5
Auction Updates—One Month to Go!	5
Important PTA Meeting on Wed. Jan. 24	6
Coffee to Save Richmond's Elm Trees	7



Portland Public Schools recognizes the diversity and worth of all individuals and groups and their roles in society. All individuals and groups shall be treated with fairness in all activities, programs and operations, without regard to age, color, creed, disability, marital status, national origin, race, religion, sex or sexual orientation.

Board of Education Policy 1.80.020-P

Wanted: Intern Host Families!

It is hard to believe that it is again time to look for host families for another group of interns joining the JMP community. This time, there will be 13 interns arriving in March to work with our children for until next March: one for Grant, two for Mt. Tabor and ten for Richmond (two interns for Pre-K, K, and 1st grade and one each for 2nd-5th grades).

A big thank you to all the current and past host families for their generous hospitality and help with the interns! We are so lucky to have these wonderful interns helping our teachers and children. Host families are absolutely critical for making their stay in Portland wonderful and memorable.

PLEASE CONSIDER HAVING AN INTERN FOR 4 MONTHS. Hosting an intern is a very good way to support our schools and the JMP program. An intern can be a wonderful addition to your family. Your child/children will benefit from having a native Japanese speaker at home, from exposure to linguistic, social and cultural aspects. Many host families find themselves establishing life long friendships with their interns, some even visiting them in Japan! All in all, it is well worth adding a temporary family member.

We have scheduled an **Intern Information Night on Wednesday, February 28 at 7:00 to 8:30 PM** in the Richmond cafeteria. This is a chance for you to hear from current and past host families about the benefits of this experience. Please mark your calendar and join us for this information session. Let me know if you are interested, and do not hesitate to contact me if you have any questions or concerns.

Masako Wieber
Oya No Kai intern support
503-281-0956
masako.w@comcast.net



Wealth of Cultural Events in Jan.—Feb.

We are so fortunate to live in a city with a wide variety of cultural art experiences suitable for the whole family. Here's a list of some of our favorite experiences for you and your family to enjoy in the weeks ahead:

Friday, January 26

Portland Taiko assembly at Richmond for students in grades 3-5. *Is That Thunder?* starts at 1:00 PM in the cafeteria. Parents and siblings welcome to attend.

Saturday, January 27

Oregon's Poet Laureate, Lawson Fusao Inada, hosts a jazz and spoken word concert, *Sentimental Journey*, at the First Unitarian Church (SW 12th and Main) in downtown Portland. Concert starts at 8:00 PM and tickets are available by calling 503-774-2511 or via email at nwartment@bigplanet.com. Tickets are \$20 for adults and \$15 for seniors and students.

Sunday, January 28

Mochitsuki 2007 at PCC Sylvania Campus from 12:00-4:00 PM. Performances at 1:00 and 3:15 PM. Richmond will have a booth at the festival and our kindergarteners will perform at 12:10 PM.

Saturday, February 3

Setsuban—Beginning of Spring!

Saturday, February 17

Day of Remembrance—Civil Rights program presented by the Japanese American Citizen's League entitled *Fighting for our Rights in an Era of Terror* 1:00—3:00 PM

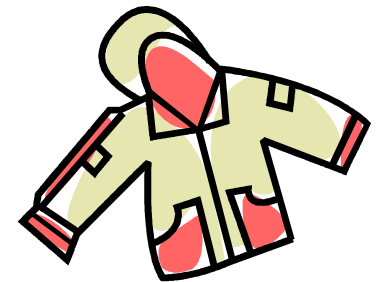
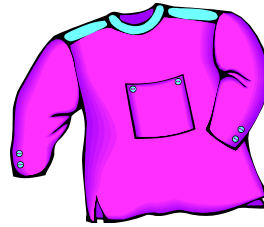
Sunday, February 18

Jake Shimabukuro concert in Hood River, Oregon at 4:00 PM

Please Check Richmond's Lost & Found!

Wondering where your child put that special sweatshirt, fleece jacket or down-filled coat? Chances are VERY good that all those lost items can be found in Richmond's Lost & Found!

The Lost & Found has moved to a more accessible location. You'll find it in the cafeteria before you walk through the double doors to the breezeway. **Unclaimed clothing is sent to the Portland PTA's Clothes Closet at the end of every month.**



Come Join the Fun at the 2007 Auction

Maybe you've decided not to attend this year's auction – well you can still participate as a volunteer.

Volunteer Coordinator is Karen Alexander (second grade parent) karen.alexander@comcast.net 503.956.0309

We need volunteers for: **Thursday, February 8**—Daytime and evening hours to assist in the set up of the silent auction area.

Friday, February 9 -Daytime hours to put the finishing touches on the silent auction area, set up the registration area and decorate the live auction/dinner space. Late afternoon and evening

positions include: coat check, greeters, data entry/check out, registration, silent auction closers, live auction assistants (handlers, spotters, recorders, runners), cashiering/accounting, will call and clean up.

Lunch, dinner and snacks will be provided for all volunteers. Please contact Karen Alexander to indicate interest in a position and for more information.

Thank you to the JMP Community for all of your support of this great program and the wonder and opportunities it provides for our children and our community.

Project Second Wind—March 5-9th

Did you know....

- 72,000 children receive emergency food from the Oregon Food Bank *every month*.
- 47% of families seeking emergency food had at least one adult who was working. That's up from 43 percent in 2004 and 37 percent in 1996.
- The 2006 Project Second Wind Food Drive raised over 320,000 pounds of food and served more than 6,200 Oregon families.
- "Youngsters from impoverished homes get sick more often, have much higher rates of both iron deficiency anemia and serious ear infections and are hospitalized more frequently," according to Dr. J. Larry Brown.

The Board of Education has designated Project Second Wind as the official winter food drive for schools in Portland Public Schools. Since the first food drive in 1971, students in Portland Public Schools have collected more than 5 million pounds of food for Oregon's most needy citizens. Richmond students have participated every year.

During the week of March 5-9th large food baskets will be set up in the cafeteria for students and families to drop off donations for Project Second Wind. Please remember this event!

Items most needed for the Oregon Food Bank:

- Dry beans, peanut butter and any form of meat (e.g. canned tuna, chicken, etc.)
- Cheese
- Pasta
- Oats in any form or package
- Nuts

P. T. A. News!

Run for the Arts: Please join us Friday, January 26 at 2:30 in the volunteer room for a meeting concerning this year's Run for the Arts. Principal Anderson and Mr. Kuney have something special in store this year that will allow us to keep the entire proceeds from our very own version of Run for the Arts. Currently, the Run for the Arts program takes 10 to 15% of the profits for administrative costs. Please join us to help name, coordinate, and organize our new Run for the Arts, and as always, children are welcome at the meeting!!!

IMPORTANT!!! Next Wednesday, January 24 at 7:00 p.m. in the cafeteria PTA is hosting a very important meeting with Multnomah County Commissioner, Lisa Naito, her Policy Advisor, Carol Wessinger, CEO of Cascadia Behavioral Health Center, Leslie Ford, and Interim Director of Security for PPS, Dennis Tune. The purpose of the meeting is to gather information regarding Cascadia's move of their Psychiatric Security Review Board (PSRB) from their downtown location to the location across the street at 43rd and Division. My concern is the clientele base of PSRB, whether that includes treating sexual offenders/predators, and the appropriateness of housing this program in such close proximity to three schools (Richmond, Atkinson, and Franklin). It is also my understanding that Multnomah County was supposed to have a public hearing before moving PSRB out of downtown, but no school administrator or district official was or has been contacted prior to or after the move. I will be contacting the PTA presidents at each school today as well as the Richmond Neighborhood Association to invite them to join us. Please join us as we gather the facts! More details about this meeting on page 6 of this newsletter.

Kristina Kallen, PTA President



Richmond's Foundation Benefits YOUR Child's Education

We were able to keep our dedicated library aide and add a Reading Specialist this year, thanks to the pledges of more than 40 Richmond families to the Richmond Foundation. A total of almost \$70,000 was raised through parent pledges and fundraisers for Richmond's Foundation last year. So far this year we've already raised just over \$10,000 toward staff position for 2007-08.

What staff positions will be funded? We're aiming for a Japanese Immersion Specialist to provide enrichment and curriculum support for our classrooms. This year, state and local funding is, at the moment, looking possibly, maybe, perhaps a little brighter than last year. So it is impossible to tell, at the moment, if funds raised this year will need to be used for our librarian and reading specialist again...or if these positions will be funded by the district next year to enable us to use Foundation funds for a Japanese Immersion Specialist.

Later this month, from an undisclosed location, the Richmond Foundation will have a phone-a-thon in support of our Parent Pledge Drive. Like last year, we are

asking families in grades 1-5 to donate \$265 per semester. Why this amount? This is the amount kindergarten families pay each month for tuition each month. Since everyone at Richmond is used to budgeting this amount for Richmond during kindergarten, we feel this is a reasonable amount for families in grades 1-5 to continue to give....and twice per year is much less painful than the total kindergarten tuition bill. (And of course, kindergarten and preschool families are more than welcome to donate if they wish.)

If you're interested in helping with the phone bank, please call Andy Felcher at 503-231-1641 this week to volunteer later this month.

If you'd like to not receive a call, give now!!! Checks can be dropped off in the Richmond office in the Foundation mailbox.

Domo Arigato to all families who have already donated. We greatly appreciate your contribution to our children's education.

Auction Updates! Just One Month To Go

Hello Families,

We are just **one month away** from this year's "Our Dreams Take Flight" auction. We are looking forward to a wonderful evening of fund raising and camaraderie. This year, for something new, we are pleased to announce that we will have live music at the auction. We will be enjoying the lovely sounds of the koto performed by students from the Seiha Miyabe Kai School of Koto. In addition, the Japanese pop band, A-key Kyo, will be performing after the oral auction ends around 10:00pm.

Tickets have been mailed to all JMP families. If you would like additional tickets to present to friends, family members or business associates, they are available on the round auction table near the office at Richmond. Please RSVP with payment to reserve your seat at the auction.

In order to meet our catalog printing deadlines, Friday marks the last day of procuring IF donors want their names printed in our catalog. Good news: we will be accepting donations to the end of Feb.8 and an addendum will be provided on auction night listing additional donor names.

Thank you to everyone who has brought in donations so far. Here is the class tally as of January 3, 2007.

- Preschool: 5 donations
- Kindergarten: 24 donations
- 1st Grade: 9 donations
- 2nd Grade: 30 donations
- 3rd Grade: 19 donations
- 4th Grade: 23 donations
- 5th Grade: 44 donations

Remember, we can only count your donation if you note the class on the donor form. The winning class will be awarded \$500 for their class fund this spring.

As always, thank you for your support. Please contact Melanie (wmdrj@quik.com) or Jody (littlesj@qwest.net) with any auction questions or concerns.



IMPORTANT PTA MEETING

Wednesday, January 24 from 7 to 8:00 PM

in Richmond's cafeteria

We are having a PTA meeting to discuss Cascadia Behavioral Health Center (a treatment center providing mental health services/addiction services) located directly across Division from us at 2415 SE 43rd. Your presence is needed so you can learn how your child is being safely protected and you can ask questions of the guests who will join us for this meeting. Our guests include:

- Lisa Naito, Multnomah County Commissioner for our area
- Carol Wessinger, Commissioner Naito's policy advisor
- Leslie Ford, President and CEO of Cascadia Behavioral Health
- Jim Hava, staff member for Cascadia Behavioral Health
- Dennis Tune, director of security for Portland Public Schools
- John Horn, Area Director for the Cleveland/Franklin cluster

The purpose of this meeting is to gather factual information about the services offered at Cascadia regarding PSRB (Psychiatric Security Review Board) . Before the meeting we will review the PTA ground rules which include the basics like taking turns to speak, avoiding interruptions, etc.

The issue: Recently we learned that Cascadia had moved their Psychiatric Services department from their downtown location to the location directly across the street from us. I began a fact-finding mission about what exactly this entails, if sexual predators are included in these services, are criminals being treated there, is it a 24-hour facility, etc.

Our questions include:

- Does Cascadia treat violent criminals with mental illness at the 43rd and Division location?
- Does Cascadia treat sexual offenders and/or sexual predators with mental illness at the 43rd and Division location?
- Does Cascadia treat offenders with mental illness who have committed crimes against children at the 43rd and Division location?
- How often do patients receive treatment at the 43rd and Division location?
- How do patients travel to/from the 43rd and Division location for treatment?
- Are patients housed at the Cascadia clinic on 43rd and Division, even for a limited amount of time (e.g. 24 hours)? If so, how are they supervised and secured?
- What is the process for tracking a patient to/from the Cascadia clinic at 43rd and Division?
- Who is informed if a patient does not report to/from the clinic within the designated time? For example, does the case manager or Cascadia notify Portland Police, School Police, neighboring schools?
- Are patients with felony records who receive mental health services at Cascadia chaperoned during travel to/from the 43rd and Division clinic?
- What is the ratio of case managers to patients?
- Does Cascadia serve patients for whom proximity to children, schools, playgrounds is a violation of their treatment plan or probation?
- How does Cascadia track/monitor crime within a specific radius of their clinics to determine whether patients are involved in local crime as they travel to/from mental health services?
- Other questions you may have as you listen to our guests.

Buy Coffee to Support Richmond's Elm Trees – every week!

Decaf now \$11/pound

Our school grounds are home to 18 mature Elm trees – about half of the Elms in the Richmond neighborhood. Elms are susceptible to Dutch Elm Disease (DED) and many communities - including Portland - have lost the Elms trees lining their streets to this disease. Richmond's Save Our Elms chapter, a 501(c) 3 non-profit, partners with Portland Roasting to raise money for inoculations and pruning of our trees through the sale of coffee.

The Richmond chapter of Save Our Elms currently has about \$1800 in the bank to use to inoculate the trees once every three years with a fungicide to protect them from Dutch Elm Disease (DED). Our trees were inoculated in 2001 and 2004 and are due for inoculation this summer, all with the help of generous volunteers. Our chapter has also helped PPS pay a portion of tree pruning costs. Fungicide prices vary every year, but we can expect inoculant prices to cost \$3,000 this summer.

Decaf price change (still a bargain!)

Please consider helping our elm trees throughout the school year. Due to a price increase, Save Our Elms sells Portland Roasting's delicious, environmentally friendly regular coffee for **\$10/lb** for and decaf coffee for **\$11/lb**. \$4.50/lb. of each pound goes to Save Our Elms. We accept donations as well.

Portland Roasting descriptions:

All coffees for Richmond, including the decafs, are our Farm Friendly™ Direct coffees because as important to us as the quality of our coffee is our social responsibility. We strongly believe that we can make a positive difference in the coffee world through direct, socially responsible coffee sourcing. The foundation of this coffee sourcing is our Farm Friendly Direct™ Programs. These Programs involve paying growers a premium for their coffee with 100% of the premium going to farm and community projects. All of these projects are designed to give back directly to the farmers - furthering the long term sustainable infrastructure. These are extremely important issues to Portland Roasting!

Ethiopian – Kochere: This coffee is part of Project H.O.P.E., which stands for Hope and Opportunity for the People of Ethiopia. We combine Portland Roasting's efforts with our coffee broker and farming cooperative to build a much needed community center for the Ethiopian farming community of Kochere. This community hub will provide a common meeting place for educational purposes, as well as a vital medical dispensary for the people of Kochere.

French Organic – Certified organic; dark roast

Farm Friendly Direct, SWP (Swiss Water Process) French Decaf – directly sourced, chemical free, dark roast.

Farm Friendly Direct, SWP (Swiss Water Process) Morning Decaf – directly sourced, chemical free, light roast.

Please put orders in the Save Our Elms mailbox in the school office or email Mary Klinger at dustin-mary@comcast.net. Please include payment in the order (make checks to *Save Our Elms* only – no cash please!) or arrange to get a check to Mary before picking up your coffee. For orders submitted by 8:00 AM Thursday, coffee will be available in the office by Friday afternoon.

French Organic ground and Ethiopian – Kochere ground coffees will be available for purchase in the office from Patsy at \$10 a pound. THANK YOU FOR YOUR CONTINUING SUPPORT OF THIS PROGRAM!

Save Our Elms Coffee Order Form

Date _____

Name _____ Phone _____ email _____

_____ Donation amount. Save Our Elms is a non-profit 501(c) 3 corporation in the State of Oregon. EIN: 31-1581092.

Coffee	Ground	Whole Bean	Totals
Ethiopian - Kochere			\$10/lb x lbs. = \$
French Organic			\$10/lb x lbs. = \$
SWP French Decaf			\$11/lb x lbs. = \$
SWP Morning Decaf			\$11/lb x lbs. = \$
Totals			

Questions? Please contact Mary Klinger at (503) 234-5147 or dustin-mary@comcast.net for ordering and general questions or Paul Gilles at paul@portlandroasting.com for coffee-related questions.



CALENDAR FOR JANUARY 19– February 9, 2007

Portland Public Schools

JAPANESE IMMERSION AT RICHMOND ELEMENTARY SCHOOL

2276 SE 41st Street
Portland, OR 97214
Phone: 503-916-6220
Fax: 503-916-2665
Website: www.richmondjmp.org

Japanese Magnet Program

Richmond office hours
are 7:30 AM—4:00 PM

- Mon. Jan. 22 Scrip order day
- Wed. Jan. 24 Young Players Beginning Acting Class begins at 2:20-3:20 PM
PTA Meeting in Richmond 's cafeteria at 7-8:00 PM
- Fri. Jan. 26 Assembly for grades 3-5: Taiko, Is That Thunder at 1:00 PM
Scrip pick up day
- Sat. Jan. 27 Lawson Inada's jazz and spoken word concert at First Unitarian Church (SW 12th and Main); see page 3 for details
- Sun. Jan. 28 **Mochitsuki** 2007 at PCC Sylvania Campus 12-4:00 PM
- Mon. Jan. 29 Switch Day! Morning and afternoon classes switch.
- Wed. Jan. 31 **NO SCHOOL**—Professional Development Day
- Sat. Feb. 3 Celebration of Schools at Portland Expo Center 10:00-3:00 PM
- Mon. Feb. 5 Scrip order day
- Wed. Feb. 7 Prospective parent information night 7-8:30 PM in cafeteria
- Fri. Feb. 9 **Our Wings Take Flight Auction** at the Melody Ballroom
Scrip pick up day



11TH ANNUAL JAPANESE AMERICAN NEW YEAR CELEBRATION

Mochitsuki2007

Sunday, Jan. 28, 2007 • Portland Community College Sylvania Campus (12000 SW 49th Avenue, Portland)
FREE PARKING • TRIMet routes 44 & 78 • Latest schedule and info at www.oregonnikkel.org or (971) 226-3571

MOCHI DO ABOUT NOTHING

Performances at 1:00 PM & 3:15 PM
Performing Arts Center

Featuring

LAWSON INADA

Poet Laureate of Oregon

PORTLAND TAIKO

Asian American drum performance group

ROBERT KIKUCHI-YNGOJO

Internationally renowned storyteller

TANUKI TAIKO

FUJINAMI-KAI

Dance

SAHOMI TACHIBANA

Dance

Admission

Adults \$12, Students/Srs \$9, Children \$5
Includes admission to the Cultural Fair

Tickets from Brown Paper Tickets
1-800-838-3006 or BrownPaperTickets.com

Tickets are subject to convenience charge
All Ticket Sales final

CULTURAL FAIR

Noon to 4:00 PM, College Center
Suggested donation of \$2 for adults & \$1 for children

MOCHI POUNDING SUSHI & JAPANESE SNACKS

IKEBANA

ICE CARVING

CALLIGRAPHY

Hands on activities for all ages

COMMUNITY STAGE PERFORMANCES

Sponsored by

Japanese American Citizens League • Portland Taiko
Oregon Nikkel Legacy Center
Portland Community College Multicultural Center

Supported by

Nikkel Jin Kai • Japan America Society of Oregon
The Consulate General of Japan