

January 26, 2007

www.richmondjmp.org



JAPANESE IMMERSION AT RICHMOND ELEMENTARY SCHOOL

Richmond Shinbun

Richmond Families are the Best Ambassadors

Dear Richmond Families,

Our office phone is ringing off the hook with calls from prospective parents requesting information about school tours, information nights, and the transfer process to enroll their child(ren) in our Japanese immersion program. We're averaging 15-18 parents on our weekly tours of classrooms and I receive 3-5 emails per day from families living as far away as Osaka and as close as Laurelhurst Park. The common denominator with most of these queries is the connection to current Richmond families. People call and visit our school most often because they have heard YOU saying such wonderful things about our school's program.

We've refined the information in the kimono red parent packets to give you up-to-date information as you talk to friends, family members, co-workers, and neighbors about your child's experience at Richmond. Baskets with red parent packets are located in the main hallway and on the bench in the cafeteria. Please feel free to take these packets to share with folks who may be interested in pursuing Japanese immersion education for their children.

What's my child's chance of getting into Richmond? Very good if your child is a pre-school or kindergarten student. Here's a look at the transfer slots we've established for each grade level for the 2007-08 school year:

- Pre-school: 50 slots for 2 classes of 25 students each, divided among full and half-day programs Note: tuition is \$650 per month for full-day pre-school, \$400 for half-day pre-school.
- Kindergarten: 100 slots for 4 classes of 25 students each; tuition is \$295 per month
- 1st Grade: 12 slots for 4 classes of 24 students each
- 2nd Grade: 2 slots for 2 classes of 26-28 students each
- 3rd Grade: 2 slots for 2 classes of 26-28 students each
- 4th Grade: 6 slots for 2 classes of 25 students each
- 5th Grade: 6 slots for 2 classes of 25 students each

Some important dates for families to remember:

- February 4—Transfer forms available online and in school offices
- Wed. February 7—Information night at Richmond, 7:00 PM
- Thurs. February 22—Information night at Richmond, 7:00 PM
- Wed. March 14—Mandatory meeting at Richmond, 1:00 or 7:00 PM
- **Fri. March 23—Transfer forms due to PPS Enrollment & Transfer Office**
- Tues. April 10—Mandatory meeting at Richmond, 1:00 or 7:00 PM

I look forward to seeing you at Mochitsuki this weekend! Please stop by the Richmond booth to say hello.

Kathryn Anderson
Principal

Inside this issue:

| | |
|--|-----|
| Wanted: Intern Host Families! | 2 |
| Cultural Events in January and February | 3 |
| PTA News | 4 |
| Scrapbook Committee Needs YOUR Pictures | 5 |
| Top 10 Reasons to Attend the Auction on Feb. 9th | 5-7 |
| Why Lunch Should Be 1-Hour Long by Ian M. | 8 |
| Save Our Elms Coffee Order | 9 |



Portland Public Schools recognizes the diversity and worth of all individuals and groups and their roles in society. All individuals and groups shall be treated with fairness in all activities, programs and operations, without regard to age, color, creed, disability, marital status, national origin, race, religion, sex or sexual orientation.

Board of Education Policy 1.80.020-P

Wanted: Intern Host Families!

It is hard to believe that it is again time to look for host families for another group of interns joining the JMP community. This time, there will be 13 interns arriving in March to work with our children for until next March: one for Grant, two for Mt. Tabor and ten for Richmond (two interns for Pre-K, K, and 1st grade and one each for 2nd-5th grades).

A big thank you to all the current and past host families for their generous hospitality and help with the interns! We are so lucky to have these wonderful interns helping our teachers and children. Host families are absolutely critical for making their stay in Portland wonderful and memorable.

PLEASE CONSIDER HAVING AN INTERN FOR 4 MONTHS. Hosting an intern is a very good way to support our schools and the JMP program. An intern can be a wonderful addition to your family. Your child/children will benefit from having a native Japanese speaker at home, from exposure to linguistic, social and cultural aspects. Many host families find themselves establishing life long friendships with their interns, some even visiting them in Japan! All in all, it is well worth adding a temporary family member.

We have scheduled an **Intern Information Night on Wednesday, February 28 at 7:00 to 8:30 PM** in the Richmond cafeteria. This is a chance for you to hear from current and past host families about the benefits of this experience. Please mark your calendar and join us for this information session. Let me know if you are interested, and do not hesitate to contact me if you have any questions or concerns.

Masako Wieber
Oya No Kai intern support
503-281-0956
masako.w@comcast.net



Wealth of Cultural Events in Jan.—Feb.

We are so fortunate to live in a city with a wide variety of cultural art experiences suitable for the whole family. Here's a list of some of our favorite experiences for you and your family to enjoy in the weeks ahead:

Friday, January 26

Portland Taiko assembly at Richmond for students in grades 3-5. *Is That Thunder?* starts at 1:00 PM in the cafeteria. Parents and siblings welcome to attend.

Saturday, January 27

Oregon's Poet Laureate, Lawson Fusao Inada, hosts a jazz and spoken word concert, *Sentimental Journey*, at the First Unitarian Church (SW 12th and Main) in downtown Portland. Concert starts at 8:00 PM and tickets are available by calling 503-774-2511 or via email at nwartmgt@bigplanet.com. Tickets are \$20 for adults and \$15 for seniors and students.

Sunday, January 28

Mochitsuki 2007 at PCC Sylvania Campus from 12:00-4:00 PM. Performances at 1:00 and 3:15 PM. Richmond will have a booth at the festival and our kindergarteners will perform at 12:10 PM.

Saturday, February 3

Setsuban—Beginning of Spring!

Saturday, February 17

Day of Remembrance—Civil Rights program presented by the Japanese American Citizen's League entitled *Fighting for our Rights in an Era of Terror* 1:00—3:00 PM

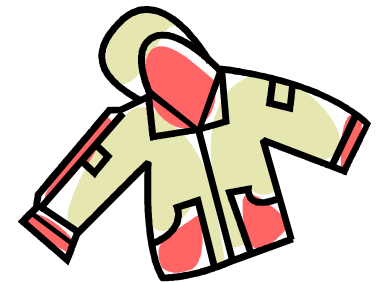
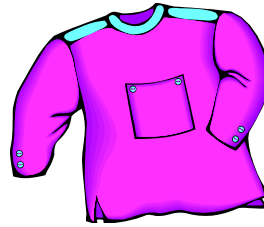
Sunday, February 18

Jake Shimabukuro concert in Hood River, Oregon at 4:00 PM

Please Check Richmond's Lost & Found!

Wondering where your child put that special sweatshirt, fleece jacket or down-filled coat? Chances are VERY good that all those lost items can be found in Richmond's Lost & Found!

The Lost & Found has moved to a more accessible location. You'll find it in the cafeteria before you walk through the double doors to the breezeway. **Unclaimed clothing is sent to the Portland PTA's Clothes Closet at the end of every month.**



Come Join the Fun at the 2007 Auction

Maybe you've decided not to attend this year's auction – well you can still participate as a volunteer.

Volunteer Coordinator is Karen Alexander (second grade parent) karen.alexander@comcast.net 503.956.0309

We need volunteers for: **Thursday, February 8**—Daytime and evening hours to assist in the set up of the silent auction area.

Friday, February 9 -Daytime hours to put the finishing touches on the silent auction area, set up the registration area and decorate the live auction/dinner space. Late afternoon and evening

positions include: coat check, greeters, data entry/check out, registration, silent auction closers, live auction assistants (handlers, spotters, recorders, runners), cashiering/accounting, will call and clean up.

Lunch, dinner and snacks will be provided for all volunteers. Please contact Karen Alexander to indicate interest in a position and for more information.

Thank you to the JMP Community for all of your support of this great program and the wonder and opportunities it provides for our children and our community.

Project Second Wind—March 5-9th

Did you know....

- 72,000 children receive emergency food from the Oregon Food Bank *every month*.
- 47% of families seeking emergency food had at least one adult who was working. That's up from 43 percent in 2004 and 37 percent in 1996.
- The 2006 Project Second Wind Food Drive raised over 320,000 pounds of food and served more than 6,200 Oregon families.
- "Youngsters from impoverished homes get sick more often, have much higher rates of both iron deficiency anemia and serious ear infections and are hospitalized more frequently," according to Dr. J. Larry Brown.

The Board of Education has designated Project Second Wind as the official winter food drive for schools in Portland Public Schools. Since the first food drive in 1971, students in Portland Public Schools have collected more than 5 million pounds of food for Oregon's most needy citizens. Richmond students have participated every year.

During the week of March 5-9th large food baskets will be set up in the cafeteria for students and families to drop off donations for Project Second Wind. Please remember this event!

Items most needed for the Oregon Food Bank:

- Dry beans, peanut butter and any form of meat (e.g. canned tuna, chicken, etc.)
- Cheese
- Pasta
- Oats in any form or package
- Nuts

P. T. A. News!

On Wednesday, January 24th Richmond's PTA hosted a meeting to gather information regarding Cascadia's move of their Psychiatric Security Review Board (PSRB) from their downtown location to the location across the street at 43rd and Division. Approximately 35 Richmond parents joined the following guests for this meeting:

Lisa Naito, Multnomah County Commissioner
Leslie Ford, CEO of Cascadia Behavioral Health
Jim Hlava, Cascadia Behavioral Health
Mary Claire Buckley, Director of the PSRB for the State of Oregon
Ben Wood, Cascadia Behavioral Health
John Horn, Area Director for Cleveland/Franklin clusters in Portland Public Schools
Dennis Tune, Director of Security for Portland Public Schools

Our two-hour dialogue with our guests allowed us to formulate three priorities for next steps as we work to ensure the safety and security of Richmond students, families and staff. We will work closely with experts from Portland Public Schools, the State of Oregon, Cascadia Behavioral Health, Multnomah County, City of Portland and others to make progress on identified areas of need:

1. **Zoning**—To change the zoning that allows a facility serving severely at-risk adults, many with criminal backgrounds, to be located two blocks from an elementary school.
2. **School Security**—Investigate strategies and funding for improved school security. Suggestions made by parents and principal at Wednesday's meeting included enclosing the playground fencing, doors with card or keypad locking systems, and a site security guard.
3. **Good Neighbor Agreement**—This document was created in 2004 and needs updating. We will work with the Richmond Neighborhood Association and Cascadia Behavioral Health to complete this work.
4. **Other**-What are your ideas, thoughts, questions, concerns?

Please contact Kristina Kallen (kmk456@comcast.net) if you are interested in helping on one of these initiatives. Your voice and experience is needed!

The link for the State of Oregon website identifying the proximity of sexual offenders to any location is:

<http://sexoffenders.oregon.gov/SorPublic/Web.dll/main>.

Scrapbook Committee Need Your Photos!

WE NEED YOUR PHOTOS!!!!

The scrapbook committee is in need of photos you have from school and related events!!! Nina Nakagawa and Chiho Whiteford are putting together a scrapbook of the various events that Richmond and it's community have. So if you have any photos from: Back to School Night, Halloween, Special Assemblies, Craft Fair, Mochi Tsuki, Spring Festival, Run for the Arts, Field Day, Science Fair, Artist in Residence Days , Children's Day at Washington Park, OMSI Overnight, Field Trips etc., please donate them to the RICHMOND SCRAPBOOK.

A black box labeled "SCRAPBOOK INBOX" is located on the table in front of the office. Please label the date/event on the back of the photo and place it in the box. Thank you for your donations!!! If you would like to help with this project, please contact Nina Nakagawa 503-288-4079 Nina@makesmemories.net or Chiho Whiteford 503-233-8129 whiteford@comcast.net



Top Ten Reasons Not to Miss This Year's Auction:

- 1) It's the biggest fundraiser of the year benefiting our intern program, the Oya No Kai general fund, Richmond PTA's priority of fundraising for a Japanese Immersion Specialist, and the 5th grade cultural exchange to Japan.
- 2) Portland Taiko's Kazuyo Ito, along with her "big partner" Toyomi Yoshida, will be our MC for the oral auction.
- 3) Steve Dorsey returns as our fabulous auctioneer.
- 4) Seiha Miyabe Kai School of Koto will perform during our silent auction.
- 5) Japanese Pop Band, A-Key Kyo will perform immediately after the oral auction.
- 6) We have a unique selection of special "buy-in" events. Check out the auction website for more details www.oyanokai.org/auction07
- 7) We are offering at least 30 terrific oral auction items. More details on the auction website.
- 8) The silent auction will have hundreds of items. There is something for everyone – from restaurant certificates to haircuts to beautiful artwork and so much more.
- 9) There will be poppers, a raffle, 5th grade Japan or Bust cards, and games, including the first-ever round of Rich-

mond Roulette.

10) Your evening at the elegant Melody Ballroom includes a complimentary drink of beer or wine, a mouthwatering menu (see below) and maybe even a bottle of Yoshida's Gourmet Sauce.

Appetizers: Sushi rolls, "Drunken" shrimp, Ginger-garlic beef skewers

Salad: Greens with Asian pears and pomegranates with rice vinegar vinaigrette

Entrée Choices: Red bell pepper breast of chicken or Yellow panang curry with vegetables (vegetarian)

Sides: Japanese style rice, Asparagus and baby carrots, Ciabatta rolls

Dessert: Truffle cake with chocolate-raspberry drizzle

Don't miss the fun, the friends and the fundraising! Join us on Friday night, February 9th, 2007. Doors open at 5:30pm.

As always, thank you for your support. Please contact Melanie (wmdrj@quik.com) or Jody (littlesj@qwest.net) with any auction questions or concerns.





Our Dreams Take Flight

Here's an amazing list of Special Buy-in Parties and Events that will be offered at the auction that support Oya No Kai and Richmond PTA!

ROSE FESTIVAL PARADE AND BRUNCH

hosted by Collins and Baumgardner Families

This June, the Rose Festival will celebrate **100 years** of tradition! **The only way to celebrate this Rose Festival Centennial Event is the JMP way.** We have saved a space for you on the sidewalk outside Saks 5th Avenue for the Portland Rose Festival Parade on Saturday, June 9th. The tradition continues with merry music, fantastic food, flying watermelon and other great games. All you need to do is arrive at the reserved spot for the breakfast buffet and be entertained until the parade starts. Ask around, this is the best parade ticket in town!

Saturday, June 9th

\$50 per person

Limited to 60 people

*****ORAL AUCTION ITEM*****

SKY BOX AT THE ROSE GARDEN

HARLEM GLOBETROTTERS

donated by Oya No Kai with

special assistance from John Baumgardner

Be dazzled by the hilarious and athletic basketball antics of the Harlem Globetrotters on February 24, 2007. Enjoy the company of other JMP families in our exclusive Sky Box at the Rose Garden Arena. Make a memory with a special child in your life.

Saturday, February 24th

\$50 per person

Limited to 22 people

*****ORAL AUCTION ITEM*****

HARVEST PARTY

hosted by Joe and Pam Cameron

Sandra and Verl Green

Sharon Ivey and Tome Newhouse

Liz Evans and Dean Runyan

This party was such a success last year that we are offering it again! Liz Evans and Dean Runyan's Irvington home is the place to be for finger-lickin' goodies from the King and Queen of BBQ, famous desserts from Sharon Ivey, beverages and, of course, enlightening conversation and good times.

Saturday, September 15th

Limited to 50 people

*****ORAL AUCTION ITEM*****

MOM'S NIGHT OF ART AND DINNER

hosted by 2nd grade class

Art with glass artist Kurumi Conley in her home studio. The evening will begin with lovely appetizers, dinner and wine served by second grade parents. The party will then move to glass artist Kurumi Conley's NE Portland home and studio for dessert and tea and where Kurumi will lead instruction in the art of decorative glass making. All participants will have the opportunity to make their own piece of decorative art - a lovely evening for mom's night out.

To see examples of glass art please visit

<http://oyanokai.org/auction07/specialevents.html>

Saturday, April 21st at 5:30pm

\$50.00 per person

Limited to 16 women

KARAOKE AND LUAU PARTY

hosted by 4th grade class

This is going to be the adult event of the summer! Join us at the Miller's home and enjoy amazing Hawaiian food, Hula dancers, and of course, KARAOKE, all in a Luau atmosphere! If you've ever had a chance to karaoke with the Millers and Walcotts, you know this is an event not to miss.

Saturday, July 21st at 5:00pm

\$40 per person

Limited to 42 people

GUIDED WINE TOUR

hosted by Slyman, Cameron, and Stephens Families

Join us for a wonderful day of touring local wineries. Wine expert and Richmond dad, Joe Cameron, will lead us on a tour of the wineries while providing history and information of both the wines and wineries. A lite brunch will be served before embarking and appetizers, lunch and desserts will be served throughout the day while enjoying the beautiful landscapes.

***Saturday, July 28th 11:00am till evening time
\$80 per person***

HINA-MATSURI *Girl's Day Event*

hosted by Pamela and David Jacobson

In Japan Hina-Matsuri is a special day for girls to display dolls that represent the royal court. Pamela Jacobson is opening up her home for a special mother daughter Girl's Day Event. Interns Miki and Mika will also be there to help girls try on outfits for dress up, with crafts and refreshments. Pamela's collection of Japanese dolls will be on display throughout the event. This will truly be a memorable day for both mothers and daughters.

***Saturday, March 3rd 11:30am – 2:30pm
\$50 per mother/daughter couple,
\$20 for 1 additional daughter
Limited to 10 mother/daughter couples***

“O” BENTO LESSONS

hosted by Pre-K class

Please join us in learning some fun ways to liven up those lunch boxes. Wild Oats on Fremont has donated their demonstration kitchen for a great time in learning in the ins and outs of putting together a Bento Lunch Box. The menu includes onigiri, tamago-yaki, kinpira, chicken teriyaki, hijiki no nimono, green beans goma-ae, steamed kabocha, and the highlight sausage “octopus” and apple “rabbits”. Octopus and rabbits are a quick and easy addition to any bento box. We'll show you how to turn sausages into octopuses and crabs, and apple wedges into rabbits. Come join us and put a smile on your kids' faces when they open their lunch boxes.

****Check for complete details at the auction.****

CHILDREN'S DAY DANCE

hosted by Kindergarten Class

We are inviting all children Kindergarten through 5th grade to ask someone special in his or her life to escort them to a very special Children's Day Event. It will be an entertaining evening with music, food, activities, dancing, and crafts. Each couple will have a wonderful evening and get to take home a picture of them self with their escort.

***Saturday, May 5th 6:30pm – 8:30pm
\$30 per adult/child couple
\$10 for 1 additional child per adult
Limited to 50 couples***

**For updated information regarding Special
Buy-in Parties and Events please visit:**

**[http://www.oyanokai.org/
auction07/index.html](http://www.oyanokai.org/auction07/index.html)**

Why Lunch Should Be One Hour Long

by Ian M.

(District policy prevents newsletter from identifying complete name, age, grade of students.)

1. Kids should have more time to finish their lunch. 20 minutes isn't long enough; 30 minutes would be much longer and just right for eating with 30 more minutes for playing outside.
2. Lots of time gives the cafeteria people more time to make the hot lunches for kids and the interns.
3. A longer lunch and recess gives kids more time for talking about things that have happened in different classes. It's hard for kids to talk and chew at the same time, so a longer recess would give kids more time for visiting about school while they play on the playground.
4. A 30-minute lunch gives kids more time to lay out their lunch from home or from school. Lunches from home and school have lots of stuff to open such as straws, juice packs, sporks, zip-lock baggies, and accessory kits with sporks or chopsticks.
5. There would be a longer time for teachers to eat lunch along with their interns. Teachers work hard, so an hour to eat lunch gives them more time to rest.
6. Now that we have new playground structures, we could use 30 minutes to play on it and have fun. 20 minutes just isn't enough.



Buy Coffee to Support Richmond's Elm Trees – every week!

Decaf now \$11/pound

Our school grounds are home to 18 mature Elm trees – about half of the Elms in the Richmond neighborhood. Elms are susceptible to Dutch Elm Disease (DED) and many communities - including Portland - have lost the Elms trees lining their streets to this disease. Richmond's Save Our Elms chapter, a 501(c) 3 non-profit, partners with Portland Roasting to raise money for inoculations and pruning of our trees through the sale of coffee.

The Richmond chapter of Save Our Elms currently has about \$1800 in the bank to use to inoculate the trees once every three years with a fungicide to protect them from Dutch Elm Disease (DED). Our trees were inoculated in 2001 and 2004 and are due for inoculation this summer, all with the help of generous volunteers. Our chapter has also helped PPS pay a portion of tree pruning costs. Fungicide prices vary every year, but we can expect inoculant prices to cost \$3,000 this summer.

Decaf price change (still a bargain!)

Please consider helping our elm trees throughout the school year. Due to a price increase, Save Our Elms sells Portland Roasting's delicious, environmentally friendly regular coffee for **\$10/lb** for and decaf coffee for **\$11/lb**. \$4.50/lb. of each pound goes to Save Our Elms. We accept donations as well.

Portland Roasting descriptions:

All coffees for Richmond, including the decafs, are our Farm Friendly™ Direct coffees because as important to us as the quality of our coffee is our social responsibility. We strongly believe that we can make a positive difference in the coffee world through direct, socially responsible coffee sourcing. The foundation of this coffee sourcing is our Farm Friendly Direct™ Programs. These Programs involve paying growers a premium for their coffee with 100% of the premium going to farm and community projects. All of these projects are designed to give back directly to the farmers - furthering the long term sustainable infrastructure. These are extremely important issues to Portland Roasting!

Ethiopian – Kochere: This coffee is part of Project H.O.P.E., which stands for Hope and Opportunity for the People of Ethiopia. We combine Portland Roasting's efforts with our coffee broker and farming cooperative to build a much needed community center for the Ethiopian farming community of Kochere. This community hub will provide a common meeting place for educational purposes, as well as a vital medical dispensary for the people of Kochere.

French Organic – Certified organic; dark roast

Farm Friendly Direct, SWP (Swiss Water Process) French Decaf – directly sourced, chemical free, dark roast.

Farm Friendly Direct, SWP (Swiss Water Process) Morning Decaf – directly sourced, chemical free, light roast.

Please put orders in the Save Our Elms mailbox in the school office or email Mary Klinger at dustin-mary@comcast.net. Please include payment in the order (make checks to *Save Our Elms* only – no cash please!) or arrange to get a check to Mary before picking up your coffee. For orders submitted by 8:00 AM Thursday, coffee will be available in the office by Friday afternoon.

French Organic ground and Ethiopian – Kochere ground coffees will be available for purchase in the office from Patsy at \$10 a pound. THANK YOU FOR YOUR CONTINUING SUPPORT OF THIS PROGRAM!

Save Our Elms Coffee Order Form

Date _____

Name _____ Phone _____ email _____

_____ Donation amount. Save Our Elms is a non-profit 501(c) 3 corporation in the State of Oregon. EIN: 31-1581092.

| Coffee | Ground | Whole Bean | Totals |
|---------------------|--------|------------|---------------------|
| Ethiopian - Kochere | | | \$10/lb x lbs. = \$ |
| French Organic | | | \$10/lb x lbs. = \$ |
| SWP French Decaf | | | \$11/lb x lbs. = \$ |
| SWP Morning Decaf | | | \$11/lb x lbs. = \$ |
| Totals | | | |

Questions? Please contact Mary Klinger at (503) 234-5147 or dustin-mary@comcast.net for ordering and general questions or Paul Gilles at paul@portlandroasting.com for coffee-related questions.



CALENDAR FOR JANUARY 26– February 16, 2007

Portland Public Schools

JAPANESE IMMERSION AT RICHMOND ELEMENTARY SCHOOL

2276 SE 41st Street
Portland, OR 97214
Phone: 503-916-6220
Fax: 503-916-2665
Website: www.richmondjmp.org

Japanese Magnet Program

Richmond office hours
are 7:30 AM—4:00 PM

- Sat. Jan. 27 Lawson Inada's jazz and spoken word concert at First Unitarian Church (SW 12th and Main); see page 3 for details
- Sun. Jan. 28 **Mochitsuki** 2007 at PCC Sylvania Campus 12-4:00 PM
- Mon. Jan. 29 Switch Day! Morning and afternoon classes switch.
- Wed. Jan. 31 **NO SCHOOL**—Professional Development Day
- Sat. Feb. 3 Celebration of Schools at Portland Expo Center 10:00-3:00 PM
- Mon. Feb. 5 Scrip order day
- Wed. Feb. 7 Prospective parent information night 7-8:30 PM in cafeteria
- Fri. Feb. 9 **Our Wings Take Flight Auction** at the Melody Ballroom
Scrip pick up day
- Sat. Feb. 10 Visiting students from Sumaura Elementary School arrive from Kobe, Japan
- Mon., Feb. 12 Site Council meeting at 2:30-4:30 PM in the library
- Thurs. Feb. 15 Ice skating party with visiting Kobe students and their host families at Lloyd Center Ice Rink
- Sat. Feb. 16 Sumaura students return to Kobe, Japan

11TH ANNUAL JAPANESE AMERICAN NEW YEAR CELEBRATION



Mochitsuki2007

Sunday, Jan. 28, 2007 • Portland Community College Sylvania Campus (12000 SW 49th Avenue, Portland)
FREE PARKING • TRIMet routes 44 & 78 • Latest schedule and info at www.oregonnikkel.org or (971) 226-3571

MOCHI DO ABOUT NOTHING

Performances at 1:00 PM & 3:15 PM
Performing Arts Center

Featuring

LAWSON INADA
Poet Laureate of Oregon

PORTLAND TAIKO
Asian American drum performance group

ROBERT KIKUCHI-YNGOJO
Internationally renowned storyteller

TANUKI TAIKO

FUJINAMI-KAI Dance

SAHOMI TACHIBANA Dance

Admission

Adults \$12, Students/Srs \$9, Children \$5
Includes admission to the Cultural Fair

Tickets from Brown Paper Tickets
1-800-838-3006 or BrownPaperTickets.com

Tickets are subject to convenience charge
All Ticket Sales final

CULTURAL FAIR

Noon to 4:00 PM, College Center
Suggested donation of \$2 for adults & \$1 for children

MOCHI POUNDING
SUSHI & JAPANESE SNACKS

IKEBANA

ICE CARVING

CALLIGRAPHY

Hands on activities for all ages

COMMUNITY STAGE PERFORMANCES

Sponsored by

Japanese American Citizens League • Portland Taiko
Oregon Nikkel Legacy Center
Portland Community College Multicultural Center

Supported by

Nikkel Jin Kai • Japan America Society of Oregon
The Consulate General of Japan