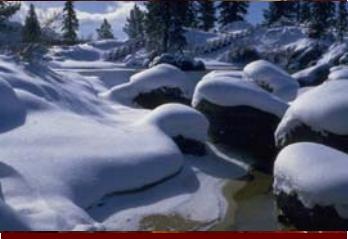


November 30, 2007

www.richmondjmp.org



RICHMOND JAPANESE IMMERSION

Richmond Shinbun

Oregon Charities Hope Big Kicker Means Big Giving

A story featuring Richmond on the front page of *The Oregonian*, Monday, November 30 by Dave Hogan

Parents at Richmond Japanese Immersion School usually hold a fundraising drive each spring. But this year, they've added a fall campaign. It's called Kickstart Richmond for a reason: The kicker is coming.

In about two weeks, Oregon officials will begin mailing 1.7 million kicker checks, returning more than \$1.1 billion to taxpayers in the biggest ever refund of surplus income taxes. The checks could trigger \$100 million in donations to charities, experts say, and that's why the Richmond Foundation and other nonprofits are asking supporters to consider donating at least part of their kicker.

The timing is perfect for nonprofits. Not only is the state putting an average of \$612 into taxpayers' pockets, but the checks will arrive during the peak giving season. So United Way, the Portland Art Museum, the Portland Schools Foundation and other groups are mentioning the kicker in their year-end requests for donations.

"It's a huge opportunity for people to give back to the community, and it's a huge opportunity for nonprofits to sharpen their message as to why it's important to support them," says Tripp Somerville of the Portland Schools Foundation. "It's a no-duh opportunity."

In Southeast Portland, a flier sent to Richmond parents this month urges them to "Kickstart Richmond using your kicker." The school foundation hopes the kicker will help them raise more than the \$65,000 they collected last year, which helped pay for a first-grade teacher, a reading specialist and a librarian.

Richmond's principal, Kathryn Anderson, says last year's contribution allowed the 438-student school to have four first-grade classes this year. That means 23 or 24 kids in each classroom, more manageable than three classes with 32 students apiece.

Although some nonprofits would prefer the state keep the tax money and spend it on more services, the groups hope the kicker checks will prompt Oregonians to give generously to charitable causes. Some groups are still preparing their kicker-related efforts. Children First for Oregon, for example, plans to add an Internet site this week called kickerforkids.org that will ask supporters to not only donate their own kicker but also to encourage family and friends to contribute theirs. And at Portland State University, students helping with fundraising will start calling alumni this week to ask that they contribute their kickers to the school.

The holiday spirit combined with the end of the tax year makes this a key time for charitable giving. Many groups receive more than half of their annual contributions at the end of the year. The Northeast Emergency Food Program, operated by Ecumenical Ministries of Oregon, receives up to a third of its income in the last two months of the year. The Oregon Community Foundation typically gets half to two-thirds of its donations during the last three months.

Oregonians tend to contribute more to charities when they have more financial resources, says Greg Chaille, who has been president of the Oregon Community Foundation for 21 years. The foundation publishes an annual report on charitable giving in Oregon, which totals more than \$1.2 billion a year. Chaille says he won't be surprised if 10 percent of the more than \$1 billion in tax refunds makes its way into charitable donations. "In fact, I would expect it," he says, "given the past pattern of generosity by Oregonians. "That would move giving up by about \$100 million. I think that would be a reasonable amount to expect people to give."

Oregon's one-of-a-kind kicker law, created in 1979, requires the state to send refunds to taxpayers when income tax collections top projections by more than 2 percent. The last time there was a kicker for personal income taxpayers was 2001. Although this year's checks won't arrive until December, some Oregonians already have donated their kicker. About 13,500 taxpayers checked a box on their 2006 state return donating their kicker to the State School Fund, which pays for school operations. Those contributions totaled \$6.9 million, the state Department of Revenue says.

Since the record kicker amount was announced, some of those taxpayers have asked revenue officials whether they could change their minds and get their kicker. The answer: Nope. But some of the donors wish more people would give. George Lederer, librarian at Portland Jewish Academy, and his wife, Lori Lancaster, a high school teacher, figure their kicker was about \$800. Noting that their grown son and daughter attended Portland-area public schools and earned degrees from state universities, the Southeast Portland couple say they want more money directed to education.

But Lederer says a \$1 billion tax refund is "a big mistake" at a time when he considers mental health, foster children, K-12 education, higher education and state police to be inadequately funded. "We feel this is the only thing we can do to actively show that we think the money should be given back," Lederer says. Despite the potential windfall for them, some nonprofit officials are uncomfortable with the kicker, too. "It's problematic that the state continues to have a kicker when there are so many needs going unmet," says David Leslie, executive director of Ecumenical Ministries of Oregon, an association of 17 Christian denominations. Government funding has declined for Ecumenical Ministries' food, homeless, HIV/AIDS and refugee programs, making it increasingly reliant on private donations, Leslie says. Although the group isn't mentioning the kicker in its year-end requests for donations, it is acutely aware of the \$1 billion about to be stuffed into taxpayers' wallets. "If you want to give part or all of your kicker check," Leslie says, "we'll put it to good use."

Dave Hogan: 503-221-8531; davehogan@news.oregonian.com

Looking Ahead in Your Child's Classroom

PreK— Thank you to the parents for the delicious lunches and dinners supplied during conferences!

This week we are beginning to learn about Holiday stories and traditions from other cultures, learning some sign language, and our new song is Sittamerink. We continue to learn about the letters T and A, the number four, AABB patterning, and squares. In Japanese, we have created beautiful wreaths made of water-colored leaves which are displayed outside our classroom. We have been talking about family and learning family

vocabulary as well as continuing to practice our traditional children's songs and fingerplays.

Jaina-sensei, Karin-sensei, Kamata-sensei & Karou-sensei

Kindergarten— In the English classrooms we had a special guest come to teach us more about trees. Joan, "The Tree Lady", came and did her "Talk About Trees" with us and helped each child make some paper! We're also working on making leaf banners and leaf shirts. Thank you for sending the turkeys in - they look great!

In the Japanese classrooms we're wrapping up our study of trees and patterns, and continuing to learn more hiragana and related vocabulary. We've also started calligraphy with Daigo-Sensei, the calligraphy master who teaches calligraphy at Richmond. She works with half a class at a time, so so far half of each class has worked with her.

Jill, Amy, Kelly & Reiko-sensei

2nd Grade— In second grade English we have had a busy week. We are now in our third week of Writers' Workshop, and many of us are beginning to publish our own special writing pieces. We are also learning more about adjectives and how they enhance our writing efforts. Now that DRA assessing is completed, we will soon be working in small groups to continue the development of our reading and other related literacy skills.

In calendar a new activity, a guessing number game (Suuji no gehmu), was introduced. On Wednesday students went to the Calligraphy class which happens every other week. In that class they learn how to write Japanese letters correctly and neatly with a pencil and with a brush (later in the year). This week's homework is to read a part of Nontan story twice a day. It looks long but there are many repetitive expressions. I've noticed many students are reading homework assignments more fluently. Thank you so much for your support.

Mrs. Naylor & Mogi-sensei

5th Grade— We had a great time meeting with many of the parents at the conferences. Students came back to the classrooms with good energy and seems enjoying the schedule changes. Big math concepts have been introduced this week. Geometric terms such as rotate, slide and flip have been introduced. In Japanese class, students started to explore the concept of area with customary units. Students have been taking TESA this week as the first trial. We are going to use the data to reinforce our instructions both in English and Japanese.

Mr. Zeller and Fukushima-sensei

1st Grade— In English we have been working as a community on creating maps! Students have been busy reading, writing, and drawing communities.

In Japanese classes, we are learning to write our last names. We just finished learning half of all 46 Hiragana letters. Our next literacy activity involves a book about animals and colors. We will learn to discuss about characters and to do story telling. In math, we are on unit "Building Number Sense." By playing games such as "Dot Cards," "Double Compare," "In and Out," and "Counters in a Cup," which are introduced in class, is a fun way to build number sense. We are also practicing a song "Shirokuma no Uta" (Polar Bear Song). We are learning the rhythm by clapping in order to use musical instruments in a couple of weeks!

Uchida-sensei & Karen Meier

3rd Grade- We had a great time meeting with many of the parents at the conferences. Students came back to the classrooms with good energy and seems enjoying the schedule changes. Big math concepts have been introduced this week. Geometric terms such as rotate, slide and flip have been introduced. In Japanese class, students started to explore the concept of area with customary units. Students have been taking TESA this week as the first trial. We are going to use the data to reinforce our instructions both in English and Japanese.

Ms. Martin & Hirahara-sensei

4th Grade— We hope all of you had a wonderful thanksgiving holidays. Thank you very much for coming to Parent - Teacher conference. I really enjoyed talking with you and would like to keep in close touch with you so that parents and teachers can work as a team to ensure each child's success. Please do not hesitate to call, e-mail us, or drop by anytime after school, if you have any concerns and questions.

In Japanese class, as I mentioned during the conference, we will start WEEKLY KANJI TEST and KAKITORI TEST on Monday, December 10th. Memorizing a small chunk of kanji every week is the best way to store a number of kanji in one's long-term memory in the long run. Please take full advantage of this opportunity. Every week students are given a list of 10 Kanji and 10 kakitori words/sentences together with regular homework to practice over week. Every Monday or the following day when Monday is no school, a test is given.

Fourth graders have been working hard on writing, fractions, reading and science. Next week, they will finish their character analysis in writing. State writing test will be January. In math, they will continue to work on fractions, division, and multiplication.

Ando-sensei & Mrs. Jacobson

12TH ANNUAL JAPANESE AMERICAN NEW YEAR CELEBRATION

MOCHITSUKI 2008

Sunday, January 27, 2008 at Portland Community College, Sylvania Campus, 12000 SW 49th Avenue, Portland, OR

"Mochitsuki with Aloha" performances at 1:00 PM and 3:15 PM in the Performing Arts Center Cultural Fair with hands-on activities from Noon to 4:00 PM in the College Center. Don't forget to stop by Richmond Elementary and Oya No Kai's booths! There will also be artwork throughout the Cultural Fair and a Community Stage performance by Richmond students. Richmond, Mt. Tabor and Grant High School families and friends can purchase tickets to the "Mochitsuki with Aloha" performance without any service charges. Purchase your tickets early. Seating is limited. Please contact Kim Tanada at (503) 804-9991 or email info@mochitsuki.org.

Bringing the welcoming spirit of aloha to the Oregon winter, hundreds of volunteers from the Japanese American community will gather on Sunday, January 27, to celebrate mochitsuki, the making of sticky rice cakes that are a traditional food of the New Year celebration. Steamed rice is pounded into a soft dough and shaped into small round cakes, mochi, to resemble a mirror, one of the three ancient imperial treasures, representing wealth. All around the world, Japanese families and communities gather to pound mochi using a heavy wooden mallet and pestle, or in more recent times, an electric appliance similar to a bread machine. Making mochi is not a solitary activity. Many hands are necessary to steam the rice, pound and shape it, so the making of mochi is emblematic of bringing the community together to start the new year, bonded by sticky rice, and sharing the wealth of their labors in hopes of a prosperous future.

The public is invited to a cultural fair at Portland Community College, Sylvania Campus to try pounding mochi the traditional way using wooden mallets, or sample mochi made in modern machines. There will be hands-on activities for all ages: origami, calligraphy and ikebana (Japanese flower arranging). Local church and community groups will offer crafts, games, displays and demonstrations. Sushi, bento, Japanese and Hawaiian food will be served. A full afternoon of performances will enliven the Community Stage featuring Okinawan dance, martial arts, music and more. This year's celebration emphasizes the adaptability of the Japanese community to its immigrant locations. Many Japanese immigrated to Hawaii in the early part of the 20th century, drawn to work in the pineapple and sugar cane plantations. Hawaii still has a large population of Japanese ancestry, and surprisingly, many Asian American Hawaiian students come to study in Oregon. The Pacific current connecting Japan, Hawaii and Oregon gives the celebration its Hawaiian theme. "Mochitsuki with Aloha", the stage show in the Performing Arts Center, will feature the hula group, He Makana O Aloha. The stirring rhythms and exuberant energy of Portland Taiko, an Asian American drum performance group, Tanuki Taiko, renowned storyteller Robert Kikuchi-Yngojo, and Japanese dance troupes Fujinami-kai and Tachibana Studio will grace the stage. Alton Chung, storyteller from Hawaii will be the program's host. Show times are 1 PM and 3:15 PM in the Performing Arts Center. Tickets to "Mochitsuki with Aloha" are \$12 for adults, \$9 for students and seniors (62 years or older), and \$5 for children (12 and under).

Site Council News

The Richmond Site Council is looking for 1-2 new parents who are willing to serve. The Site Council meets monthly, historically on the second Monday afternoon of the month from 2:30-4:30. While this is a challenging time commitment for working and child-rearing parents, there are many benefits to this service. You will be able to join other parents to work and spend time with representatives of Richmond's outstanding teaching and classified staff, and Kathryn Anderson, Richmond's dynamic principal.

Under Oregon law, the stated mission of Site Council in every public school is to work on implementation of the School Improvement Plan. For me, though, the question that guides the work of the Site Council is this: given the existing resources and realities, how can we best serve and educate the students who are at Richmond now and who will be attending in the near future? I have come to think of the Site Council as creating a forum for clear communication between different groups in the school community, providing oversight of how the school is operating, and planning for the future needs of our students and the school.

More specifically, over the last couple of years, we have tackled the major issues we could identify that impact Richmond. Among other things, we have worked to:

- recruit students to meet the district's growth targets
- identify staffing needs that are not being met by district and state funding
- support the creation of a grant-writing committee
- figure out how to most effectively and painlessly do school fundraising
- maintain and strengthen the 5th grade trip to Japan
- clarify the roles and responsibilities of parent support groups
- understand the changing demographics of the student and family population of Richmond
- find support and funding for curriculum revision and staff development

If you think this sounds like fun, or if you would like to present alternative ideas to the way things work at Richmond, throw your name in the hat and volunteer, and contact Kathryn at keanders@pps.k12.or.us. In general, the commitment of Site Council members is for two years. By the way, Site Council meetings are always open, so we look forward to seeing you at our next meeting on Monday, December 10th in Richmond's staff room.

Tim Smith, Site Council member

News from Richmond's Parent Teacher Association

Kristina Kallen

Kim Tanada

Mika Obara

Sonciray Bonnell

Yoko Sato

Parent-Teacher Conference Luncheon Successful!

Thank you to everyone who participated in the staff luncheon the week of conferences! The food was delicious and it was all so beautiful. The entire staff really appreciated all your hard work and kindness in providing them with such gastronomic delights!!!

Scholastic Book Fair: This is our **ONLY** fund raiser that benefits our Richmond Library so please come and do some holiday shopping at our semiannual book fair beginning on Tuesday, 12/4 from 7:45 to 8:30 a.m. and again from 2:00 to 2:45 p.m. in the volunteer room. The fair will be open through Friday and we will be open from 5:30 to 8 p.m. during the craft fair so parents can do some holiday shopping without little ones in tow. All volunteers who work at the book fair will be entered into our two \$20.00 merchandise drawings each shift so volunteer often and increase your chances to win! Please sign up with Kristina at kmk456@comcast.net for any shifts that you would like to work. It is a lot of fun!!!



Craft Fair: Our annual Craft Fair is Friday night (a new night!) 12/7 from 5:30 to 8:00 in the cafeteria. The purpose of this evening is for children to come and make holiday presents for their friends and family. The night is free of charge, although we are asking for a donation of canned food for The Oregon Food Bank and any gently used or new clothing for our PTA Clothes Closet in sizes 4T to 4X to serve children in need throughout our community. To sign up to volunteer, please contact Suzanne Munro at suzmunro@comcast.net or Yoko Sato at duncan.s@comcast.net.

U-Cut Christmas Tree/Bake Sale: U-Cut Christmas Tree/Bake sale is on Saturday, 12/8 from 9 to 2 at the Reid family's Figgy Pudding Farms in Beaver Creek, Oregon (directions below). This is a great family day of fun, community, and celebration so join us for the party! The Reid family generously donates nearly all of the proceeds of this sale to the Richmond PTA, only keeping enough to maintain the trees. If you would like to help hand out hot chocolate, sell baked goods, are good with a saw to help those in need, or would like to bake something for us to sell, please contact Kristina at kmk456@comcast.net.

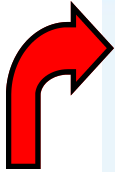
ADDRESS: 24277 S. SCHUEBEL SCHOOL ROAD, BEAVERCREEK, OR, 97004

PHONE: 503-632-7212

From 205 (north or south) take Exit 10, head south on 213 for 3.2 miles; LEFT onto Beaver Creek Road (major intersection with FOUR traffic lights; get in far left lane and stay in left lane after making left turn); STAY on Beaver Creek Rd for 6.6 miles (through two very sharp curves, the first curving sharp left after passing the Beaver Creek Saloon on left; the next curving sharp right); pass Beaver Creek United Church of Christ on right going up a hill; at 6.6 miles, turn LEFT onto LOWER HIGHLAND ROAD; go 0.6 miles and turn RIGHT onto S. Schuebel School Road; go exactly 0.5 mile up a hill, turn RIGHT into driveway immediately after telephone pole at top of hill, Christmas trees on both sides of driveway; a red brick mailbox stand is opposite our driveway on the left side of the road.



Check out this gorgeous ad for our Japanese immersion program, created by Melanie Scheurmann, Richmond parent and also the designer of the banners hanging in the main hallway. This ad will appear in the Portland Business Journal, once per month, beginning today.



Welcome to a Global Adventure in Japanese Immersion

日本語イマージョンでの世界的なアドベンチャーへようこそ！

Oregon's
ONLY
EXCEPTIONAL
School
for
Japanese
Immersion
Education.

imagine

Academic Excellence

Japanese and English Fluency

Strong Community

A Foundation for the Best Colleges

School Tours Wednesdays 8:15am



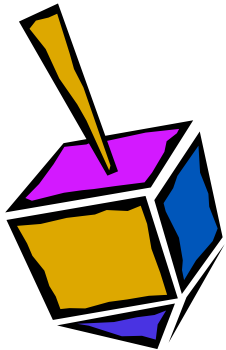
Richmond Japanese Immersion School
Preschool — 5th grade

2276 SE 41st Avenue, Portland, Oregon 97214

503.916.6220 • www.richmondjmp.org

Portland Public Schools • www.schoolchoice.pps.k12.or.us

Don't Miss the Richmond P.T.A. Craft Fair – Friday, December 7th at 5:30-8:00 PM



Crafting is fun! Help children experience the excitement of crafting gifts for loved ones and friends at the Crafting Fair, Friday, Dec. 7. Volunteers are needed to assist at the crafting tables. No preparation required, just show up. Please sign up for a one-hour shift; sign-up sheets are posted in the cafeteria. Parents of younger children can participate by bringing along another family member or special friend to assist their child while they volunteer, or by trading off with another child's parent.

Please contact Suzanne Munro at suzmunro@comcast.net

No time for dinner before heading to the Craft Fair? You can also purchase pizza and soda at the fair and help the 5th grade class raise funds for their June 2008 trip to Japan.

Buy Coffee to Support Richmond's Elm Trees – all year long!

For parents new to Richmond, 20 mature Elm trees line our school grounds – about half of the Elms in the Richmond neighborhood. These trees are not only beautiful, but they cool our surroundings, provide habitat to urban wildlife, and help absorb carbon monoxide emissions. Elms are susceptible to Dutch Elm Disease (DED) and many communities - including Portland - have lost the Elms trees lining their streets to this disease. DED is a fungus that is spread by beetles that eat dead Elm wood. Once infected, an Elm will die within weeks and can quickly spread the fungus to neighboring trees.

The Richmond chapter of Save Our Elms fundraises to inoculate the trees every three years with a fungicide to protect them from Dutch Elm Disease (DED). Next inoculation will be in June of 2010. (Fungicide prices vary every year, but we are hoping to have about \$4000 in the bank by our next inoculation date.)

To raise money, Save Our Elms has partnered with Portland Roasting to sell coffee. The coffee is delicious, environmentally friendly and costs **\$9/bag for regular and \$10 for decaf**. \$4.60 from each bag of regular and \$5.05 from each bag of decaf goes to Save Our Elms. We accept donations as well.

Portland Roasting descriptions:

All coffees for Richmond are our Farm Friendly™ Direct coffees because as important to us as the quality of our coffee is our social responsibility. We strongly believe that we can make a positive difference in the coffee world through direct, socially responsible coffee sourcing. We pay growers a premium for their coffee with 100% of the premium going to farm and community projects. All of these projects are designed to give back directly to the farmers - furthering the long term sustainable infrastructure.

Ethiopian – Kochere: This coffee is part of Project H.O.P.E., which stands for Hope and Opportunity for the People of Ethiopia. We are helping build a much needed community center for the Ethiopian farming community of Kochere to provide a common meeting place for educational purposes, as well as a vital medical dispensary for the people of Kochere.

French Organic – Certified organic; dark roast

(new) Tanager's Song – an organic blend (Central American and Indonesian certified shade grown coffees), silky-rich and full-bodied with a caramel-like finish.

(new) Papua New Guinea - a single varietal that is passive organic.

Farm Friendly Direct, SWP (Swiss Water Process) French Decaf – directly sourced, chemical free, dark roast.

Farm Friendly Direct, SWP (Swiss Water Process) Morning Decaf – directly sourced, chemical free, light roast.

A limited selection of ground coffee will be for sale on hand in the school office. Look on the counter for available selection or ask Patsy Burke. She will collect your \$9/bag or you can place your money in the Save Our Elms box. Patsy will not be able to give change. For your best selection (and essential ground or whole bean preference), I will fill weekly orders. Please put orders with your checks (made out to SAVE OUR ELMS) in the Save Our Elms mailbox in the school office or contact Mary Klinger at (503) 234-5147 or dustin-mary@comcast.net. For orders submitted by 8:00 AM Thursday, coffee will be available in the office by Friday afternoon. **THANK YOU VERY MUCH!!!**

Save Our Elms Coffee Order Form

Date _____

Name _____ Phone _____ or email _____

Coffee	Ground	Whole Bean	Totals
Ethiopian - Kochere			\$9/bag x bags = \$
French Organic			\$9/bag x bags = \$
Tanager's Song			\$9/bag x bags = \$
Paupau New Guinea			\$9/bag x bags = \$
SWP French Decaf			\$10/bag x bags = \$
SWP Morning Decaf			\$10/bag x bags = \$
Totals			

_____ Donation amount. Save Our Elms is a non-profit 501(c) 3 corporation in the State of Oregon. EIN: 31-1581092.

Revised 11-07

RICHMOND PARENT PLEDGE DRIVE – THANK YOU DONORS!

(as of 11-13-07)

"An investment in knowledge pays the best interest." Benjamin Franklin

The Richmond Foundation would like to gratefully acknowledge the many parents, families, friends, staff and businesses who have generously contributed their money, time, and effort to the Richmond Parent Pledge Drive. Every effort has been made to list all contributions accurately from July 1, 2007 thru the beginning of this week. We continuously update this list each week. It is up to date as of November 13, 2007. If, however, an error has been made, please accept our apologies and notify us.

Thank you Richmond Community! You are helping keep our school exceptional!

DONORS

Amano, Shigeki & Kaora

Andrew, Mike & Mueller, Jacqueline

Barber, Duane & Brackbill, Lise

Birke, Richard & Zehavoc, Angela

Burt, Rich & Bauer, Maxine

Chrisman, Charles & Shinobu

Felcher, Andrew & Wolf, Ariane

Fisher, Erin

Golden, Ashley

Gooding, Tim & Tam, Sara

Hagg, Daniel

Heming, Karie

Hinkle, Stephanie

Hoesly, Fred & Mae (grandparents)

Reents, Brad & Yoshiko

Schultz, Teresa

Slyman, Mike & Cathy

Slyman, Jean (grandparent)

Tomlinson, Mark & Angie

Thorp, Micah & Nicole

Virnig, Dennis & Aimee

Wilkinson, Robert & Maluaka

Yanase, Craig & Lisa

Yano, Mayumi

Zaerr, Jon & Cathy

BUSINESS DONATIONS

Lauro's Kitchen

Academy Theatre

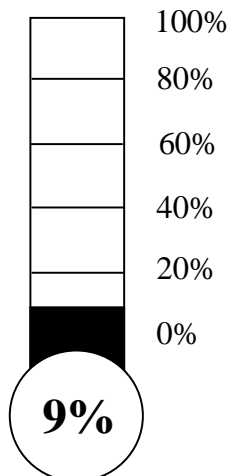
Pizzicato

MATCHING DONATIONS

Pepsico

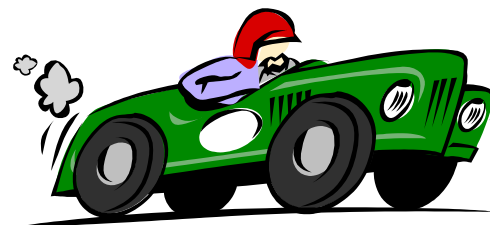
FAMILY PARTICIPATION THERMOMETER

As of 11-13-07



TOTAL DONATION

\$	0	1	1	5	5	9
----	---	---	---	---	---	---



KIDS' ART CARDS ARE HERE!

There are three opportunities for you to share some terrific kids' art work with friends and family this winter! (And raise money for staffing through Richmond School Foundation while you're at it!)

1. Order custom art cards -- the order form on the next page lets you choose your own set of 10 blank cards with envelopes for \$12.50. You can see all 58 authentic Richmond kids' artworks on the Richmond website www.richmondjmp.org and a sample of the choices appear below. Orders are due by December 7 in the office. Cards delivered December 18. Won't grandma just swoon over those cute cards!

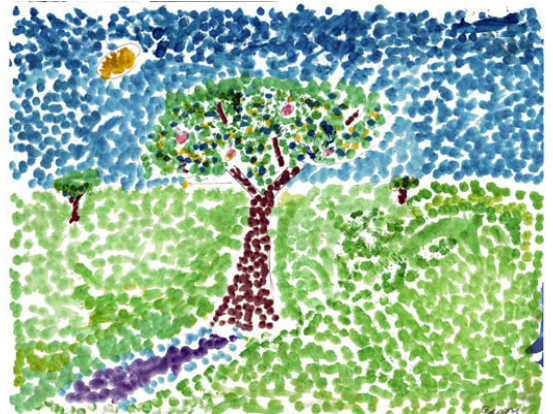
2. Buy a prepackaged set of cards at the Book Sale -- if there are just too many great artworks to choose from, we've selected a set of 10 all-season blank cards. 10 blank cards and envelopes for \$10. They make great teacher gifts! Available at the Book Sale December 4 - 10 (and buy some books to support the Richmond Library while you're there!)

3. Spread the word about Richmond School Foundation's Kickstart Campaign -- we're asking every family at Richmond to send two cards to friends or family with a request to contribute to staffing at Richmond. Let's spread the word about what a great gift our children's education is!!! Cards will come home in backpacks on November 30.



Friends Walking in the Rain to a Friend's House

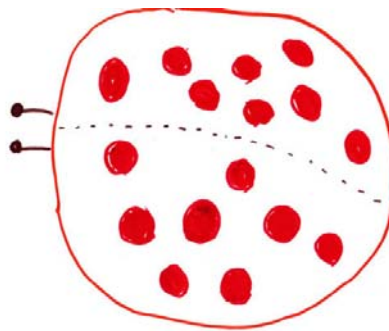
Katie Luers



A watercolor by Aaron



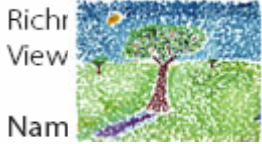
Friends Play in the Grass by Elsa



Ladybug by
Gwen

Transportation by Forrest





Richmond School Foundation
 Order Form
 or at: www.richmondjmp.org

Order by December 7th

Name: _____
 Child's Name & Grade: _____
 Contact Phone #: _____

Note: all orders must be in multiples of 10; each set of 10 is \$12.50

#	Artist's Name	Title	Quantity (Multiples of 10)	#	Artist's Name	Title	Quantity (Multiples of 10)
1	Tyla	Dragonflies		30	Gwen	Rabbit	
2	Tyla	Butterflies		31	Gwen	Ladybug	
3	Siri	Moon Painting		32	Oren	Spider	
4	Ivy	Salt Painting of the Moon		33	Owen	Any Color You Want	
5	Anals	Dot		34	Owen	Rainbow of Smiles	
6	Anals			35	Elizabeth	Moon and Stars	
7	Kirk	Camping in My Trailer		36	Arden	Peekaboo Crane	
8	Aaron			37	Carl	String Painting	
9	Nathan			38	Maren	Making a Snowman	
10	Talla	Heart Neighborhood		39	Ayu	The Strange Guards of the Clouds	
11	Talla			40	Crimson		
12	Hana	Cat Chasing Dog Under Jack O Lantern		41	Mito	Somebody Made a Snowman	
13	Hana	Girl with Flower		42	Serena	Full Moon Rainbow	
14	Ethan			43	Dante	Carrying a Big Pumpkin	
15	Forrest	Dauma		44	Makenzie	Flower Arrangement	
16	Forrest	Fan		45	Makenzie	Ocean	
17	Forrest	Fall is Red		46	Alta		
18	Forrest	Transportation		47	Slade	Small	
19	Jessica	Holidays		48	Annie	Fish	
20	Isabelle	Big Moon		49	Annie	Fruit	
21	Elsa	Bunny Rabbit Looking at the Moon		50	Owen		
22	Elsa	Friends Play in the Grass		51	Rowan		
23	Elsa	Playing with Leaves, Throwing Them Up in the Air		52	Mieke	Rainbow Grid Impression	
24	Elsa	I Am Friends with Soren		53	Mieke	Spring is Gone	
25	Gabe	Happy Hands		54	Eleanor	Family Walking in the Rain to a Friends House	
26	Gabe	Christmas Tree		55	Eleanor	Five Friends Meeting	
27	Henry			56	Eleanor	Three Friends at the Opera	
28	Lily	Camping		57	Eleanor	Snow Beauty	
29	Riley	My Cat		58	Phillip	Rainbow	
Total Quantity (must order in sets of 10)							
Total Cost \$							
multiply by \$12.50 per set of 10							

Please make checks payable to "Richmond School Foundation"
 Drop Off order form + payment in Richmond School Office

Any Questions? luersk@nwrel.org



Portland Public Schools
Japanese Magnet Program

RICHMOND JAPANESE IMMERSION

2

P

Japanese Magnet Program

CALENDAR FOR NOVEMBER 30-December 21, 2007

- Fri. Nov. 30 **DEADLINE for nomination of your child for talented and gifted services** Scrip pick up day
- Sun. Dec. 2 **19th Annual Origami Workshop at 1:00-3:00 PM** at the World Trade Center (downtown), sponsored by the Consulate-General of Japan
- Mon. Dec. 3 **NO SCHOOL**—Teacher planning day under teachers' collective bargaining agreement with Portland Association of Teachers and Portland Public Schools
- Tues. Dec. 4 **Foundation dinner event at Mio Sushi** (Hollywood site) from 5-8:00 PM
- Fri. Dec. 7 **Richmond Holiday Craft Fair** in the cafeteria at 5:30-8 PM
- Sat. Dec. 8 **U-Cut Christmas Tree & Bake Sale** at the Reid family farm in Beavercreek, Oregon—Fundraiser for Richmond's PTA
- Mon. Dec. 10 Scrip order day
- Tues. Dec. 11 Teachers and administrators from Boise, ID spend the day touring Richmond's classrooms

Site Council meeting at 2:30-4:30 PM in the staff room
- Wed. Dec. 12 School tour for prospective parents 8:15-10:00 AM

Catlin Gabel students of Japanese volunteer in classrooms
- Fri. Dec. 14 Scrip pick up day
- Mon. Dec. 17 **Richmond Foundation** meeting at 6:30-8:30 PM in the staff room—Everyone welcome!!!

Richmond office hours are

7:30 AM—4:00 PM

To reach Patsy Burke, Secretary:

503-916-6220

pburke1@pps.k12.or.us

To reach Kathryn Anderson, Richmond

Principal:

503-916-6220

503-329-1681 (cell)

keanders@pps.k12.or.us

WINTER VACATION is Sat. December 22, 2007—Sun. January 6, 2008

- *Portland Public Schools recognizes the diversity and worth of all individuals and groups and their roles in society. All individuals and groups shall be treated with fairness in all activities, programs and operations, without regard to age, color, creed, disability, marital status, national origin, race, religion, sex or sexual orientation.*

Board of Education Policy 1.80.020-P

Japan or Bust handcrafted cards are available in the Richmond Office!

Proceeds from the sales of these student made cards benefit this year's 5th grade cultural exchange to Japan. Prices are \$2.00 each or 3 for \$5.00. All occasion and holiday cards are offered. Thank you for your support.

