

# Connect to Kindergarten

伍德斯道克小学 幼儿园

---

Woodstock Elementary

March 5, 2025

# Agenda

---

Welcome and School Information 欢迎和本校信息

- 2024-2025 Kindergarten Team 幼儿园团
- Support Staff 辅助人员

Fall “Ramp Up” 幼儿园开学前新生准备

Next Steps 下一步

Tonight’s Event:

Kindergarten Information and DLI/Lottery Overview

今晚活动: 参观幼儿园教室及和老师见面



# Woodstock 2024-2025 School Information

---

Approximately 390 Students, K-5

幼儿园-五年级学生人数約 390

- TAG 天才儿童 = 17%
- ELL 英语学习 = 13%
- SpEd 特教 = 14%
- Underserved 无充分服务家庭 = 14%
- 504 = 6%
- DLI 中文双语班 = 50%

Kindergarten Class Size 幼儿园班级人数

- English Scholars 全英文班 = 20
- Dual Language Immersion = 21 and 21

Grade Configuration

Mandarin Immersion Program 中文双语班

- 50/50 Mandarin Immersion Program  
50/50 中文双语班
  - Half the Day in English 半天英文教学
  - Half the Day in Mandarin 半天中文教学
- Lottery Process 抽签入学

# Kindergarten Schedule 2024-2025

---

## Neighborhood/English Scholars and DLI

- 8:00 AM to 2:30 PM
  - Breakfast Served from 7:45-8:00 AM
- 20 Minute Recess and 20 Minute Lunch
  - Additional 15 Minute Recess and Movement Time During Day
- Weekly Morning Meeting (Fridays)
- Specials
  - Art - 45 Minutes per Week
  - Library - 45 Minutes per Week
  - Music - 45 Minutes per Week
  - PE - 2x45 Minutes per Week
- Assemblies and Special Events

## DLI Mandarin Immersion Program

- Same Daily Schedule as Neighborhood
- Half Day in Mandarin, Half Day in English
- Students Switch Languages Mid-Day
- Rotate AM/PM Language Middle of Year

## Before and After Care Program

- Champions
- Site Coordinator

# 幼儿园课表 2024-2025

---

## 全英文班和双语班

- 8:15-2:30
  - 早餐8:00-8:10
- 20分钟课间休息 20分钟午餐
  - 另有15分钟课间休息
- 晨会(星期五)
- 术科
  - 美术或图书馆/多媒体(每星期45分钟)
  - 音乐(每星期45分钟)
  - 体育(每星期90分钟)
- 集会和特别活动

## 双语班项目

- 课表和全英文班一样
- 半天用英文教学, 半天用中文教学
- 于中午时间换班
- 学年中早上为英文班换成早上中文班, 早上为中文班换成早上英文班

## 课后托儿班

# Kindergarten Schedule 2024-2025, Cont'd

---

## Typical Daily Schedule\*

- 15-20 Minute Community Meeting
- 120 Minutes Literacy Instruction
  - Foundational Skills
  - Reading
  - Writing
  - Integrated ELD
- 75 Minutes Math
- 30-40 Minutes Content Rotations
  - Health, Science, Social Studies
- 20 Minutes Guided Play

## Curriculum

- ELA = [Great Minds, Wit and Wisdom](#)
- Math = Curriculum Associates, [i-Ready Math](#)
- Science = Amplify Science
  - [Life, Earth and Space, Physical](#)
- [Social Studies](#)
- [Health and PE](#)
- [Social Emotional Learning](#) (SEL) = Caring School Community Curriculum
- DLI = [Huanle Huoban](#)

\*Minutes Shared Between DLI Teachers

# 幼儿园课表

---

## 每天课程

- 15-20分钟班会
- 120分钟识读
  - 基础能力
  - 阅读
  - 写作
  - 英文(ELL)融合
- 75分钟数学
- 30-40分钟 内容轮换 (健康 科学 社会)
- 20分钟 从游戏中学习

## 教材

- 英文(ELA) = [Great Minds, Wit and Wisdom](#)
- 数学 = Curriculum Associates, [Ready Math](#)
- 科学 = PPS Curated NGSS Lessons
  - [Life, Earth and Space, Physical](#)
- 社会 [Social Studies](#)
- 健康和体育和 [Health and PE](#)
- 社交情感 [Social Emotional Learning \(SEL\)](#)
  - Community Meetings
  - Guided Play
- 中文 = [Huanle Huoban](#) 欢乐伙伴

# Kindergarten “Fall Ramp Up”

---

## Four Days\*

- Days 1 and 2
  - Family Conversations
    - 1:1 Family Conversations and Connections
  - Scheduled with Families
- Days 3 and 4
  - Half Class Warm-Up
    - Introduce and Teach Basic School Routines
    - Begin Community Building
  - “Half Class” Assignments Shared Late August

## First Full Day - September 2

- Full Day for All Kindergarten Students

## 幼儿园开学前新生准备

### 四天

- 第1.2天: 8/27-8/28 星期二, 三
  - 家庭对谈  
老师和每个家庭个别对话
  - 时间安排
- 第3.4天: 8/29-8/30 星期四, 五
  - 半班(小班)上课练习
    - 学习学校基本常规
    - 开始建立社交
  - 详情于八月底公布
- 幼儿园正式开学9/2
  - 所有幼儿园学生全天上课

\*Specific Dates will be shared as we approach the start of the school year.



# Woodstock Staff (2024-2025)

---

## General Programs

- Classroom Teachers (18) 老师
- Principal 校长
- Secretaries (1.5) 秘书
- Art Teacher (.80) 美术老师
- Librarian (.80) 图书馆/多媒体老师
- Music Teacher (.80) 音乐老师
- PE Teacher (1.4) 体育老师
- Counselor (1.2) 辅导老师
- Nurse (.2) 护士

## Support Staff

- Learning Center Teacher 特教老师
- Speech Language Pathologist (SLP) 语言治疗师
- ELL (1.5) and ELL EA (.44) 英语老师, 助教
- School Psychologist (.4) 心理师
- District OT (As Needed) 职能治疗(学区)
- School Health Assistant 健康助理

# Family Involvement Opportunities 家庭参与机会



## Organizations 组织:

- PTA, Site Council, Shu Ren, Climate Team, Racial Equity and Social Justice (RESJ) Team, Arts/Enrichment Committee, Sustainability Committee, Woodstock Foundation 教师家长会, 校务委员会, 学校风气小组, 种族平等社会正小组, 永续发展会, 艺术/课后班委员会, 伍德斯道克基金会

## Events 活动:

- Art Night, Music Performances, Harvest Carnival, Movie Nights, Walking School Bus, Spring Carnival 美术夜, 音乐表演, 丰收节, 一同走路上学, 嘉年华。

## Classroom Volunteering 家长义工/自愿者

- Talk to Your Child's Teacher(s) 请联系老师

[Volunteer Registration and Background Check](#)

自愿者注册和背景调查

# Assessment and Instruction

---

## Assessment - Formative and Summative

- Fall Assessments
- Interim Assessments
  - MAP Fluency - K-2nd Grades
  - MAP Growth Reading - 3rd-5th Grades
  - i-Ready Math Diagnostic - K-5th Grades
  - DLI Level Learning
- Quarterly Conferences and/or Report Cards
- State Assessments
  - ELPA for ELL Students
  - Oregon State Assessment System (OSAS)  
Starts in Third Grade

## Instruction

- Teachers use assessments to understand students' abilities, learning styles, and find the best way to support student growth.
- Teacher use this information to *differentiate*.
- All students will learn!

# 测验和说明

## 测验- 形成性和总结性

- 秋季测验
- 期中测验
  - MAP Reading Fluency Map阅读流畅测验
  - MAP 发展阅读和数学
  - iReady 数学诊断测验
  - DLI 双语分级学习
- 家长会和成绩单
  - 每学季
- 州测验
  - ELPA 英语学习(ELL)学生
  - 俄勒冈州评估系统 (OSAS) 从三年级开始实施

## 说明

- 老师以测验来了解学生的能力, 学习方式, 并找到帮助学生进步的方法
- 老师以此了解学生不同的能力
- 所有学生都将学习!

# Kindergarten Instructional Focus 幼儿园教学重点

## Social Emotional Learning 社交情感

- Morning Meetings 班级晨会
- Guided Play 从游戏中学习

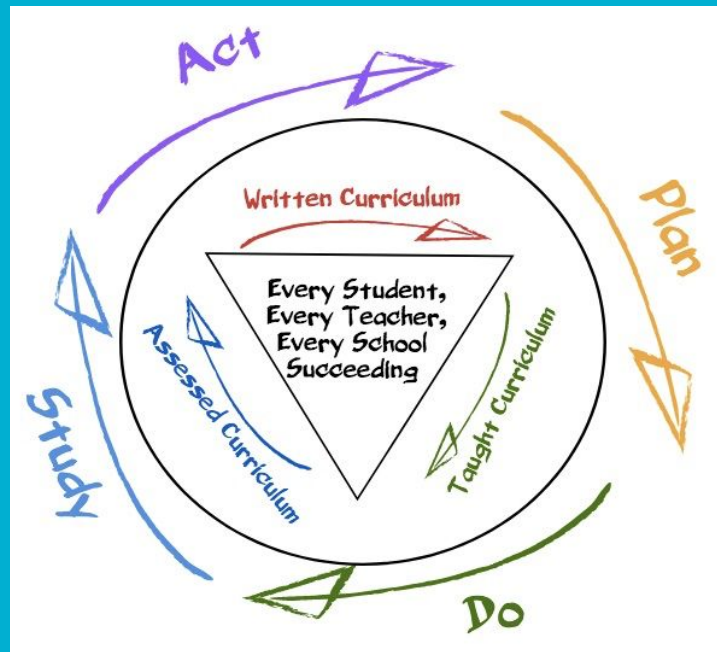
## Literacy 识读

- Foundational Skills 基础技能
- Early Literacy 早期识字

## Math 数学

- i-Ready Math (数学教材)

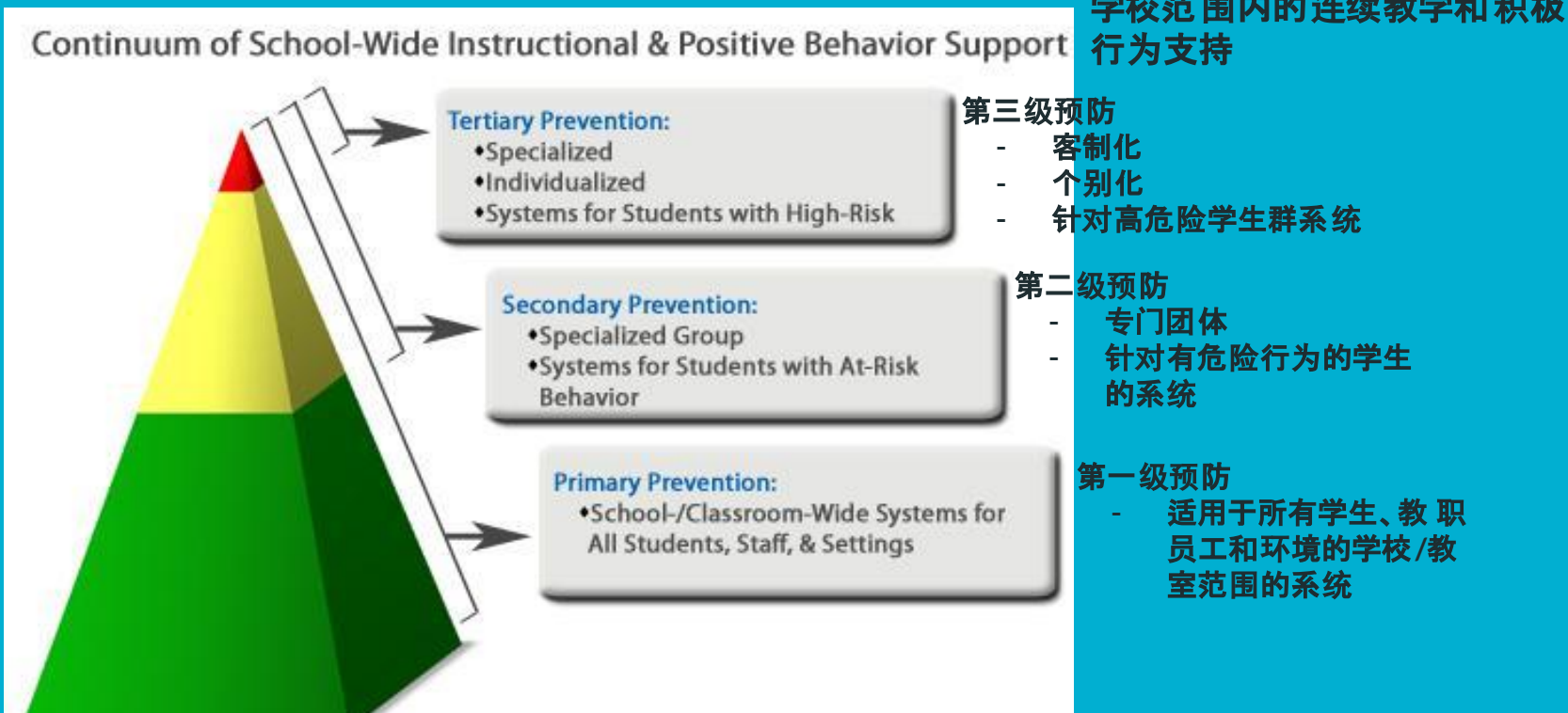
## Professional Learning Communities (PLCs)



# Culturally Responsive Positive Behavior Intervention and Support

## 文化响应积极行为干预和支持

CR-PBIS...



# CR-PBIS, Continued - “Three B’s”

---



Be Safe 安全

Be Respectful 尊重

Be Responsible 负责任

Woodstock Elementary Values:  
Perseverance, Integrity, Curiosity, Compassion

# Staying Connected 保持联系

---



## Communication

- Weekly School Newsletters 每周学校信息
- School and District Websites: 学校和学区网站
  - School: [pps.net/woodstock](http://pps.net/woodstock)
  - District: [pps.net](http://pps.net)
- Community Conversations 社区对谈
- Classroom Newsletters and Websites 班级通讯和网站
- Download the [Remind App](#)
- PTA Meetings 家长教师会议
- PTA Newsletter
- School Calendar 学校校历
- Flyers 传单
- Email or Call 电话或电邮
  - [WoodstockAttend@pps.net](mailto:WoodstockAttend@pps.net)
  - 503.916.6380



# Current Kindergarten Teachers 现任幼儿园老师

Amy McAdams - English Scholars 全英文班幼儿园老师

Liz Markovich - English Immersion Partner Teacher 双语班幼儿园-英文老师

Jenny Su - Mandarin Immersion Partner Teacher 双语班幼儿园-中文老师

# Kindergarten Teachers - Preparing for Fall

---

Ready for Kindergarten - Ms. Markovich

Volunteering - Ms. McAdams

Communication with Teachers - Su Laoshi

# Registration - Ruth 注册

## Online Registration (ENCOURAGED)

- <https://www.pps.net/enroll>

## Paper Enrollment (Submit by May 31, 2025):

- Completed School Registration Form
- Immunization Records
- Birth Certificate or Passport
- Proof of Address - Two Documents
- Vision and Dental Screening Form

## 网路注册(请尽量使用网路注

<https://www.pps.net/enroll>

## 纸本注册(于5/31 前完成幼儿园注册)

- 注册表
- 疫苗纪录
- 出生证明
- 地址证明
- 视力和牙科检测表



# Important Kindergarten Staff 幼儿园相关教职员

---

## Staff and People to Know at Woodstock:

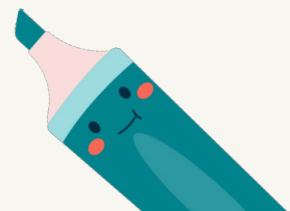
- School Counselors - Ponny Kosmas and LeAnne Forsberg 辅导老师
- EAs - Peter, Kate, Rachel, and Neil (Some Changes for Next Year) 助教
- Speech and Language Pathologist - Amy Tang 语言治疗师
- Learning Center Teacher - Lynnette Diller 特教老师
- English Language Learner Teachers - Natasha Beeler and Minori Taya 英语(ELL)老师,
- Nurse - Erika Wallin 护士
  - School Health Assistant - Bryn Suchocki 健康助理
- School Secretary - Ruth Galm 秘书
- Principal Secretary - Tabitha Rhodes 校长秘书
- PTA - President Kjersti Dodds and Vice President Liz DeMott 家长会会长和副会长
- Shu Ren
- Champions Child Care Site Coordinator - Amber and Rachel 课后托儿班



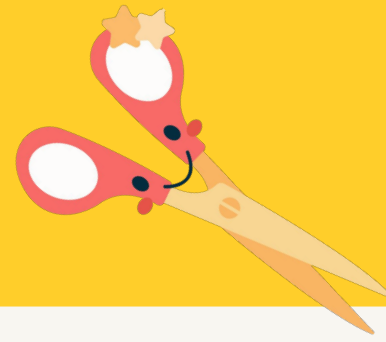
# woodstock

ELEMENTARY SCHOOL PTA

*THE OVERALL PURPOSE OF THE PTA IS TO MAKE EVERY CHILD'S  
POTENTIAL A REALITY BY ENGAGING AND EMPOWERING  
FAMILIES AND COMMUNITIES TO ADVOCATE FOR ALL  
CHILDREN*



# IMPORTANT LINKS



**Woodstock PTA – Join today!**



**Kinder Buddy Sign-Ups**



**Connect to Kindergarten & Tours**



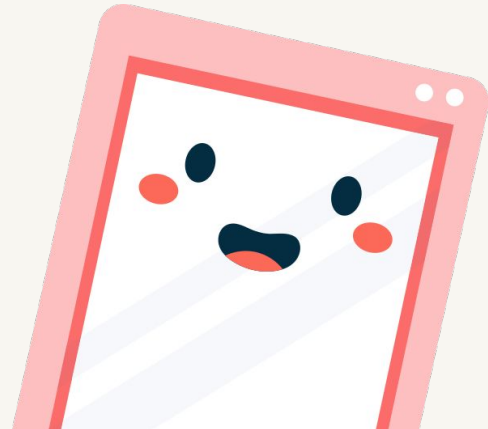
**Facebook & Instagram**



**PTA Newsletter**



**Konstella**



**[LINKTR.EE/WOODSTOCK.PTA](https://linktr.ee/woodstock.pta)**

# Next Steps

---

## Important Next Steps:

- Tonight
  - General Program Information
  - Enrollment and DLI Lottery Procedures
  - School-Family Partnerships
  - Ask Questions
- Coming Weeks:
  - Submit Any Necessary Enrollment Paperwork
- March 12 - DLI Lottery Closes
- May 14, 6:00 PM
  - Meet the Teachers and School Tour
- This Summer:
  - Information in Mail - August
  - PTA Ice Cream Social for Incoming Kindergarten Families

## 重要的后续步骤:

- 今晚
  - 一般计划信息
  - 注册和 DLI 抽签程序
  - 学校与家庭的合作
  - 提问

## 未来几周:

- 提交任何必要的注册文件
- 3 月 12 日 - DLI 抽奖结束
- 5 月 14 日下午 6:00
- 认识老师和参观学校

## 今年夏天:

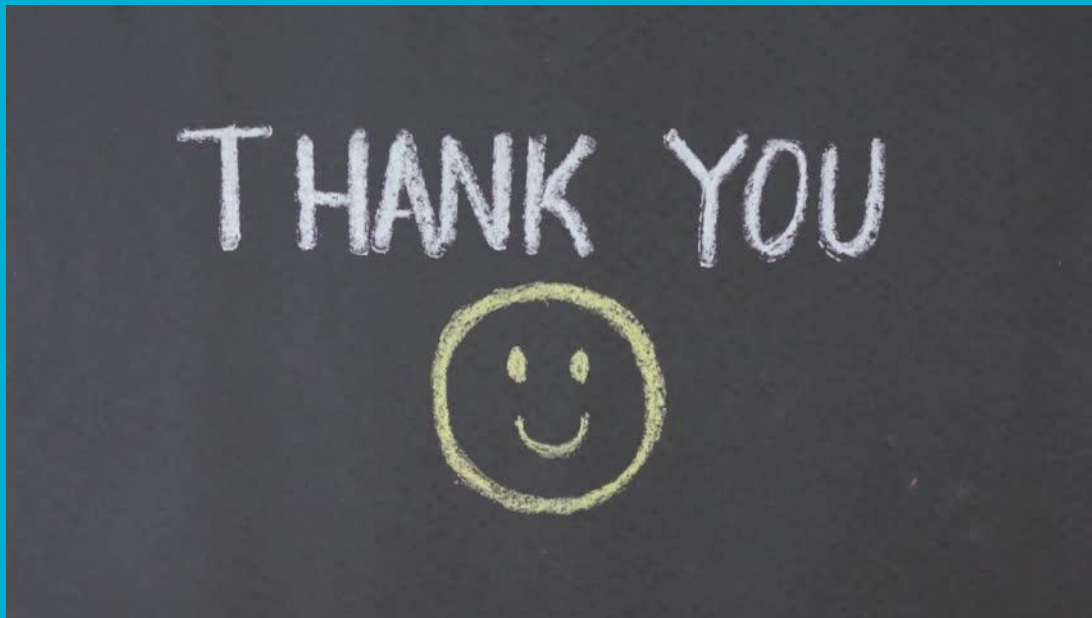
- 邮件中的信息 - 八月
- 为即将入学的幼儿园家庭举办的 PTA 冰淇淋社交活动

# Contact Information 联系方式

---

School Number: 503.916.6380 学校电话

- Seth Johnson, Principal 校长
  - [sethjohnson@pps.net](mailto:sethjohnson@pps.net)
- Tabitha Rhodes, Administrative Asst.
  - 校长秘书
  - [trhodes1@pps.net](mailto:trhodes1@pps.net) 校长秘书
- Ruth Galm, Administrative Asst.
  - 双语校务秘书
  - [rgalm@pps.net](mailto:rgalm@pps.net)
- Ponny Kosmas, School Counselor
  - [pkosmas@pps.net](mailto:pkosmas@pps.net) 辅导老师
- Erika Wallin, School Nurse 护士
  - [ewallin@mesd.k12.or.us](mailto:ewallin@mesd.k12.or.us)







Woodstock Pride