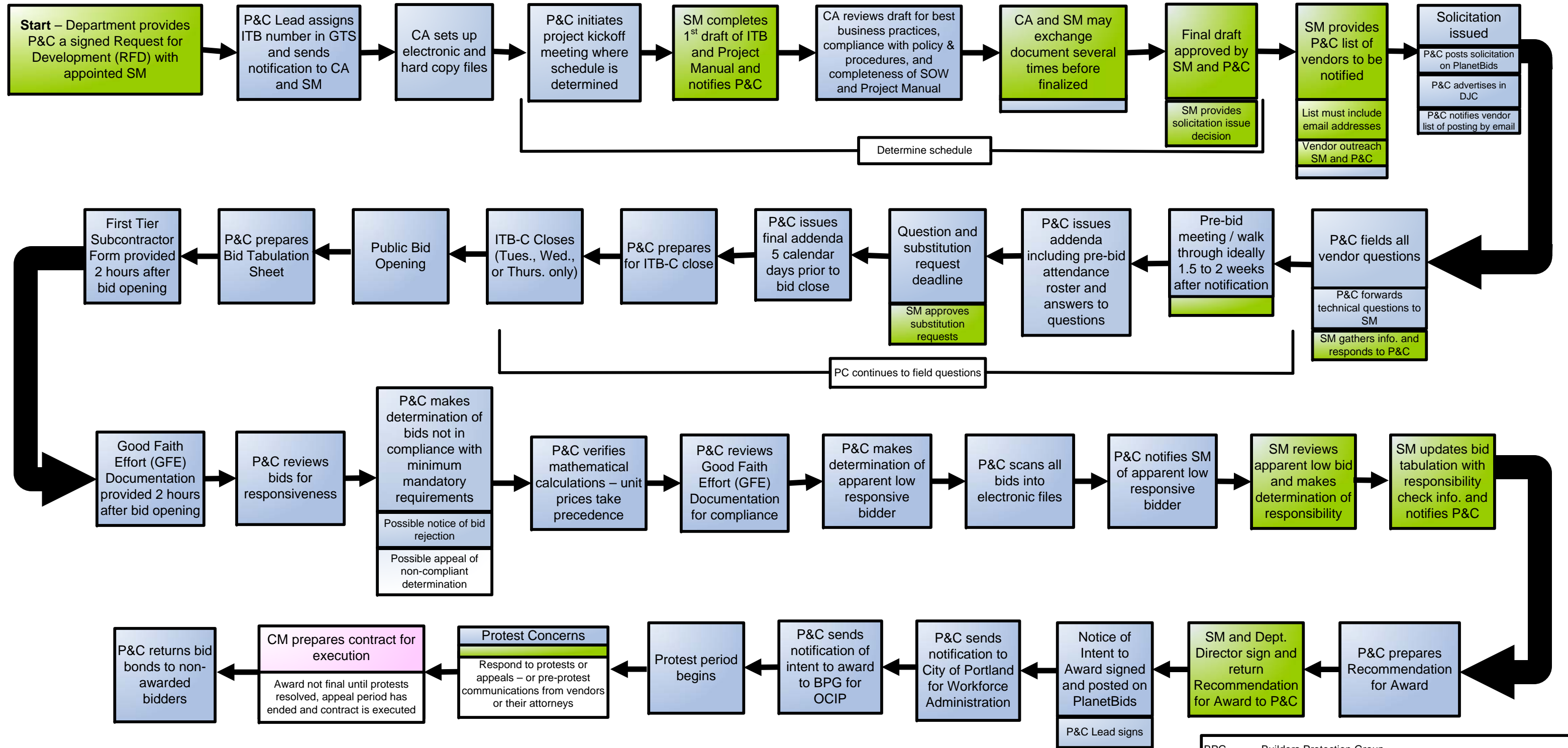


Color Designates Task Owner

Pink = Department
 Blue = Purchasing & Contracting (P&C)
 Green = Solicitation Manager

Invitation to Bid for Construction Process



NOTE: Solicitation can be cancelled at anytime throughout the process

BPG = Builders Protection Group
 CA = Contract Analyst
 CM = Contract Manager
 Dept. = Department
 DJC = Portland Daily Journal of Commerce
 SM = Department Solicitation Manager, key department assigned
 GTS = Contract tracking system
 ITB-C = Invitation to Bid for Construction
 P&C = Purchasing & Contracting
 RFD = Request for formal solicitation development