



CAREER AND COLLEGE READINESS

EDUCATION PLAN AND PROFILE

The Education Plan and Profile is a systematic plan and process that involves students in managing their own learning toward career and college readiness in grades 6-12. The Education Plan and Profile documents the student's progress and achievement toward career exploration, goals, personal accomplishments and graduation. In addition, the Ed Plan and Profile is required by statute (OAR 581-022-1130) as part of the Oregon Diploma.



7TH GRADE

Career Exploration

- *Career Cluster Inventory completed in CIS jr*
- *Research two specific careers and skills needed for those careers.*
- *Connect career interests to HS course offerings*

6TH GRADE

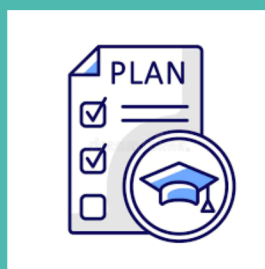
Self-Exploration

- *Explore personal skills and interests to create a "Who Am I?" Statement in CIS Jr.*
- *Time-management Lesson*
- *Identify coping skills through class lesson*
- *Complete a learning styles inventory and understand strategies associated with them.*

8TH GRADE

Future Planning

- *High school transition lessons*
- *High school course forecasting*
- *Reality Check activity in CIS jr*
- *School to career exploration and four year planning*



10TH GRADE

Career Exploration

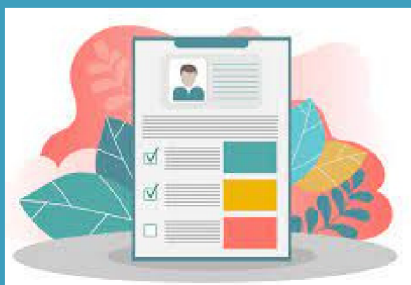
- *Personality Quiz in Maia Learning*
- *Add skills and interests to graduate profile in Maia Learning*
- *Connect interests and strengths to career pathways*

9TH GRADE

Academic Planning

- *Academic Interest Exploration*
- *Career Interest inventory in Maia Learning*
- *Career Cluster Connections to high school*
- *1st career related learning experience*
- *4 year planning*

12TH GRADE



Post-Secondary Planning

- *Career Thriving Assessment in Maia Learning*
- *FAFSA completion support for students and families*
- *My Plan Project Graduation Requirement*
- *Financial literacy and job search activities*
- *Complete graduate profile in Maia Learning*

11TH GRADE

College Exploration

- *Update Career Interest Inventory and complete Work Values assessment in Maia Learning*
- *Add career interests to career plan in Maia Learning*
- *Research colleges based on career plan*
- *2nd career related learning experience*
- *Resume completion*

- Some of the elements of the Plan and Profile will be recorded in CIS Jr. and Maia Learning
- Other elements will be recorded in other programs such as Google Drive
- Students will be taught how to use CIS Jr and Maia Learning and enter appropriate info each year
- Students will increasingly, over the years become responsible for maintaining the plan and profile
- Students will engage their parents in their Plan and Profile process